



aFe POWER Silver Bullet

Throttle Body Spacer

PN 46-32007

INSTALLATION INSTRUCTIONS

Important!

Please read information on FITMENT first. Verify the Parts List and read all instruction steps before you begin installation. For most up to date application list, visit our website.
(Dodge Challenger SRT8 6.4L shown in photo)

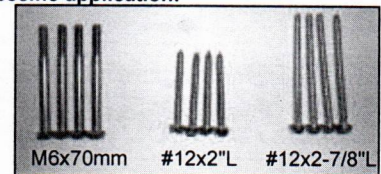
Make	Model	Year	Engine	Make	Model	Year	Engine
Dodge	Charger	06-23	V8-5.7L	Dodge	Magnum	06-08	V8-6.1L
Dodge	Charger	06-10	V8-6.1L	Chrysler	300	05-23	V8-5.7L
Dodge	Charger	12-23	V8-6.4L	Chrysler	300	05-10	V8-6.1L
Dodge	Challenger	09-23	V8-5.7L	Chrysler	300	12-14	V8-6.4L
Dodge	Challenger	08-10	V8-6.1L	Jeep	Grand Cherokee	06-10	V8-6.1L
Dodge	Challenger	12-23	V8-6.4L	Jeep	Grand Cherokee	12-23	V8-6.4L
Dodge	Magnum	05-08	V8-5.7L	RAM	2500	14-24	V8-6.4L
RAM	2500 Power Wagon	14-24	V8-6.4L	RAM	3500	14-24	V8-6.4L
Dodge	Durango	18-24	V8-6.4L				

FITMENT WITH aFe POWER INTAKE SYSTEMS: This throttle body spacer will fit with aFe POWER air intake systems: 51-12172, 54-12172, 51-12162 and 54-12162 but will require the intake tube to be cut according to the cut line.

This spacer will NOT fit with aFe Power air intake systems: 51-72203, 54-72203, 51-72203-R, 54-72202, 51-72202, 58-10003D, 58-10003R, 54-12162-C, 51-12162-C, 54-12172-C, 51-12172-C.

IMPORTANT: Before starting the installation, identify the correct furnished screws for your specific application:

- For 05-10 V8-5.7L/6.1L engines, use the M6 x 70mm machined screws.
- For 11 and up V8-5.7L engines, use the #12 x 2"L self threading screws.
- For 11 and up V8-6.4L engines, use the #12 x 2-7/8"L self-threading screws.



Step 1. Disconnect the temperature sensor from the intake tube. Then remove the OE Intake tube out of the vehicle.

Step 2. Remove the four throttle body screws. Leave factory sealing O-ring in place.

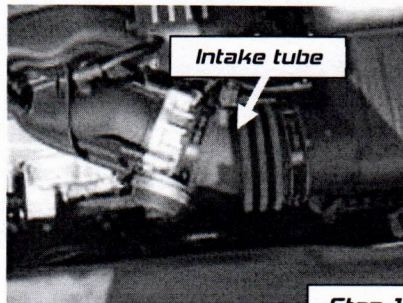
Step 3. Insert the new *Silver Bullet* throttle body spacer and provided gasket in between the throttle body and manifold as shown (The "Air-In" side should face the throttle body).

Step 4. Fasten the throttle body assembly using the (4) correctly identified screws and washers. Tighten the screws to 5 Nm (48 lb/in).

Step 5. Reinstall the intake tube. Make sure to tighten all of the clamps and reconnect the temperature sensor.

Your install is now complete! Make sure to retighten all bolts and clamps after 100 miles of driving.

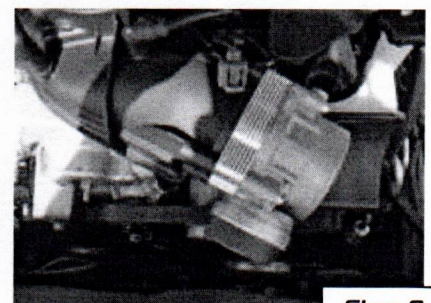
NOTE: This part has been exempt by the California Air Resources Board (C.A.R.B.) and issued an Executive Order (E.O.). If part does not come with C.A.R.B. E.O. sticker already placed on device, it is necessary to place the sticker on or near the device on a smooth, clean surface. The C.A.R.B. E.O. sticker is required to pass the smog test inspections in the state of California.



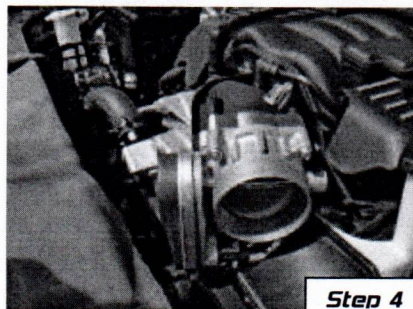
Step 1



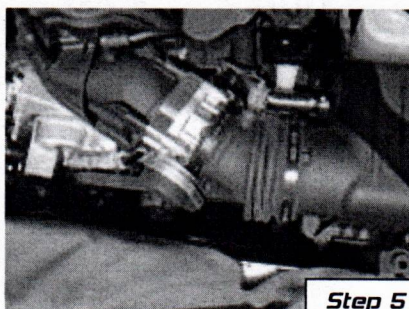
Step 2



Step 3



Step 4



Step 5

Parts List

- 1 *Silver Bullet* Spacer
- 1 Gasket
- 4 #12 x 2-7/8"L self threading screws
- 4 #12 x 2"L self threading screws
- 4 M6 x 70mm machined screws
- 4 Washers

advanced FLOW engineering, inc.

Corona, CA 92879

www.aFePower.com