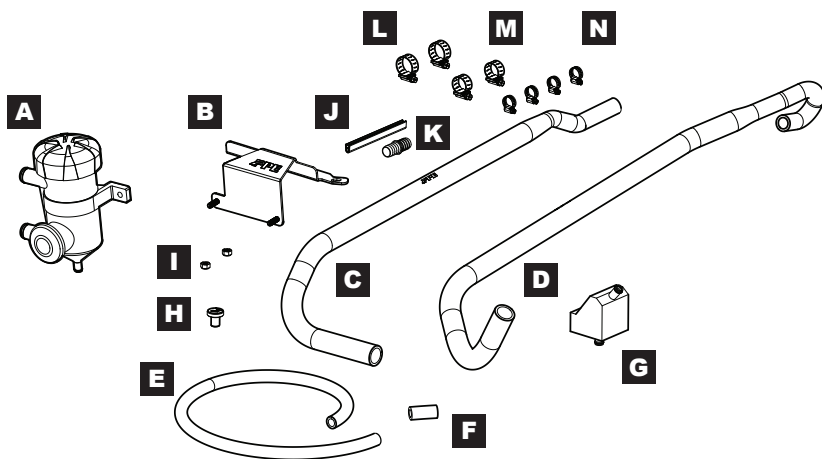


# **Crankcase Ventilation Oil/Water Separation Kit**

*Chevrolet/GMC  
Silverado/Sierra  
Chevrolet/GMC/Cadillac  
Suburban/Tahoe/Yukon/Escalade  
3.0L Duramax  
114023000*

## ***Installation Guide***



## **CONTENTS:**

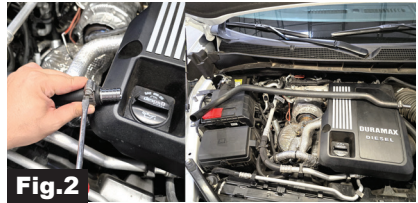
- A** (1) Catch Can
- B** (1) Mounting Bracket
- C** (1) 1" Inlet Hose
- D** (1) 1" Outlet Hose
- E** (1) 0.5" Drain Hose
- F** (1) 0.5" Connecting Hose
- G** (1) Oil Reservoir
- H** (1) Drain Plug
- I** (2) M8 Nut
- J** (1) Edge Trim
- K** (1) Double-ended Barb Fitting
- L** (2) Hose Clamp 32mm
- M** (2) Hose Clamp 27mm
- N** (4) Hose Clamp 20mm

## INSTALLATION:

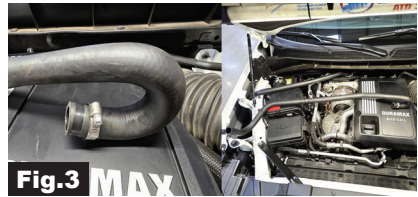
1. Turn the vehicle off and allow time to cool down before installing. Turn steering wheel all the way to the right for easier access during later install.
2. Disconnect the ccv hose from the turbo inlet (**Fig.1**)



3. Prepare Inlet Hose (C) by inserting the double-end barb fitting (K) and secure it with clamp (M) as shown in (**Fig.2**)



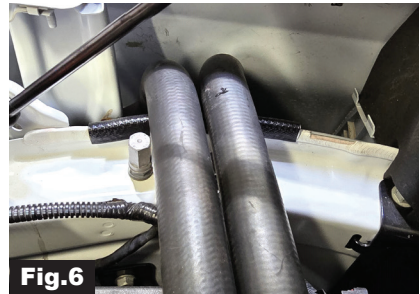
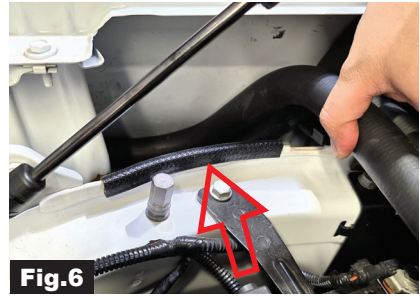
4. Prepare outlet hose (D) with clamp (M) as shown in (**Fig.3**)



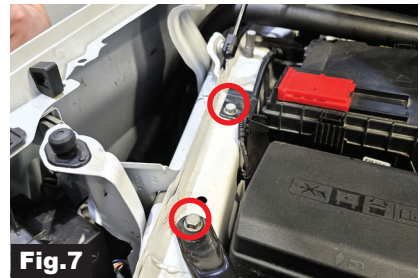
5. Insert the barb fitting from inlet hose (C) into the factory CCV hose and secure it with the factory clamp. (**Fig.4**) Next, insert the U-shape end of outlet hose (D) into the turbo inlet. (**Fig.4**) Once the hoses are secured, route them above the wiring harness as shown in (**Fig.5**)



6. Place the edge trim (J) in area shown in **(Fig.6)**. This is to protect the hoses from vibration-induced damage.



7. Remove and retain the 13mm bolts from the radiator support bracket and battery tray shown in **(Fig.7)**.



8. Remove the following Torx T-15 screws from the front passenger side fender liner.



## Crankcase Ventilation Oil/Water Separation Kit

9. Prepare the catch can assembly by following these steps:

1: Slide the 0.5" connecting hose (F) over the catch can with two clamps (N) followed by reservoir (G) in the orientation as shown in **(Fig.9)**.



2: Slide drain hose (E) and secure with clamp (N) onto the lower reservoir **(Fig.10)**, then secure the drain plug (H) with clamp (N) to the lower end of drain hose (E). **(Fig.10)**.

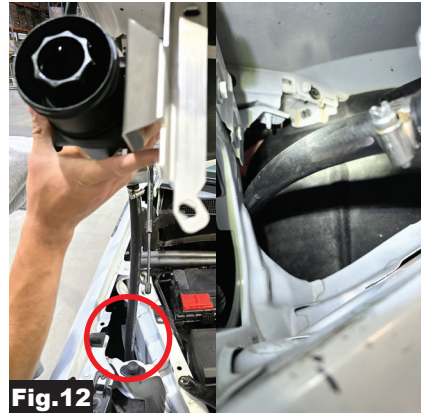


3: Attach the catch can support bracket followed by the mounting bracket (B) with the 2X 13mm nuts (I) in the orientation shown in **(Fig.11)**.

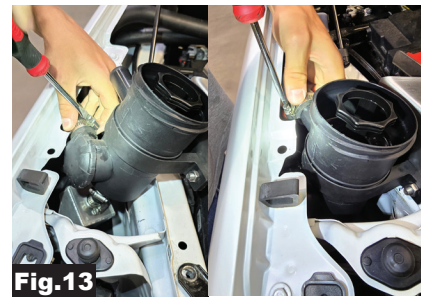




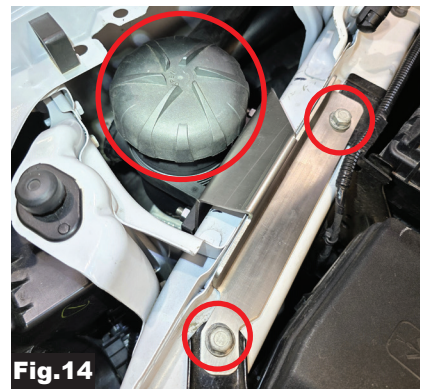
10. With the catch can lid removed (for install clearance), begin installation of assembly by inserting drain hose (E) into fender as shown. Guide the drain hose down to the fender liner. **(Fig.12).**



11. Before completely installing the catch can inside the fender, connect outlet hose (D) to the lower 1" port of the catch can and connect the inlet hose (C) to the upper 1" port of the catch can. Secure both connections with hose clamps (L). **(Fig.13).**



12. Align the mounting bracket bolt holes with the radiator support bracket and battery tray, then tighten the bolts. Once secured, place the lid back on the catch can. **(Fig.14).**



## Crankcase Ventilation Oil/Water Separation Kit

13. Route the drain hose (E) behind the fender liner (**Fig.15**) and through the notch in the lower diffuser as shown in (**Fig.16**). Reinstall the Torx T-15 screws to secure the fender liner.



***This completes the installation***

**Service recommendation:** Drain catch can every 5,000 miles by removing the drain plug. Clean the catch can screen filter as needed. To clean, remove it from catch can, submerge in mild degreaser (like brake cleaner) or hot soapy water, scrub, rinse, and dry thoroughly.



## DISCLAIMER OF LIABILITY

Performance products can increase horsepower above and beyond factory specifications. Additional horsepower creates more stress on the drive-train components, which could result in drive-train failure.

Note regarding emissions-related, non-E.O.-legal products: THESE PRODUCTS ARE LEGAL IN CALIFORNIA ONLY FOR RACING VEHICLES THAT MAY NEVER BE USED, OR REGISTERED OR LICENSED FOR HIGHWAY OR OFF-ROAD USE.

This agreement sets forth the terms and conditions for the use of PPE products. The installation of this product indicates that the Buyer has read and understands this agreement and accepts the terms and conditions. PPE (Pacific Performance Engineering) Inc., its distributors, employees, and dealers (the "Seller") shall not be responsible for the product's proper use and service. The buyer hereby waives all liability claims. The Buyer hereby acknowledges no reliance on the Seller's skill or judgment to select or furnish goods suitable for any particular purpose and that there are no liabilities which extend beyond the description on the face hereof, and the Buyer hereby waives all remedies or liabilities expressed or implied, arising by law or otherwise (including without any obligation of the Seller with respect to fitness, merchantability and consequential damages), or whether or not occasioned by the Seller's negligence. The Seller disclaims any warranty and expressly disclaims any liability for personal injury or damages. The Buyer acknowledges and agrees that the disclaimer of any liability for personal injury is a material term for this agreement and the Buyer agrees to indemnify the Seller and to hold the Seller harmless from any claim related to the item of equipment purchased. Under no circumstances will the Seller be liable for any damages or expenses by reason of use or sale of any such equipment. The Seller assumes no liability regarding the improper installation or misapplication of its products. It is the installer's responsibility to check for proper installation and if in doubt, contact the manufacturer. The Buyer is solely responsible for all warranty issues from the manufacturer.

## LIMITATION OF WARRANTY

The Seller gives Limited Warranty as to description, quality, merchantability, and fitness for a particular purpose, productiveness, or any other matter of Seller's product sold herewith. The Seller shall not be responsible for the products proper use and service and the Buyer hereby waives all rights other than those expressly written herein. This warranty shall not be extended, altered or varied except by a written instrument signed by Seller and Buyer.

Limited lifetime warranty on all PPE cast aluminum products, and PPE Transmission Coolers. Three (3) year limited warranty on PPE Manifolds and Up-Pipes Kits, and OEM-Length Up-Pipes. One (1) year limited warranty on all other PPE products from the date of sale to original buyer and limited solely to the parts contained within the products kit. All products that are in question of Warranty must be returned prepaid to the Seller and must be accompanied by a dated proof of purchase receipt. All Warranty claims are subject to approval by Seller. Under no circumstances will the Seller be liable for any labor charged or travel time incurred in diagnosis for defects, removal, or re-installation - of this product or any other contingent expenses. Under no circumstances will the Seller be liable for any damage or expenses incurred by reason of the use or sale of any such equipment. In the event that the buyer does not agree with this agreement: the buyer may promptly return this product, in a new and unused condition in its original packaging, with a dated proof of purchase to the place of purchase within ten (10) days from date of purchase for a full refund. The installation of this product indicates that the buyer has read and understands this agreement and accepts its terms and conditions.



*PPEpower.com*