

PART #	DESCRIPTION
71020	21-24 GM SUV TOE LINK KIT

COMPONENTS INCLUDED	
(1) 174071D 21-23 GM SUV DRVR TOE LINK (1) 174071P 21-23 GM SUV PASS TOE LINK	(1) 71020H 21-23 GM SUV REAR TOE LINK HARDWARE KIT
HARDWARE INCLUDED	
71020H HARDWARE KIT	
(2) 177071 GM SUV CONICAL LINK SPACER (4) 177072 HEIM SPACER COM14 X .647 X 1.975	(2) 177073 HEIM SPACER COM14 X .588 X 2.266 (1) 605969 VIBRATITE RED 2ML BULLET
TOOLS REQUIRED	
FLOOR JACK JACK STANDS	21MM SOCKET/WRENCH 24MM SOCKET/WRENCH
TECH NOTES	
<p>1. INSTALL TOE LINK BEFORE COILOVERS.</p> <p>2. INSTALL TIME: 1.5 HOUR.</p>	



WARNING!
<p>** READ ALL INSTRUCTIONS THOROUGHLY FROM START TO FINISH BEFORE BEGINNING INSTALLATION! IF THESE INSTRUCTIONS ARE NOT PROPERLY FOLLOWED SEVERE FRAME, SUSPENSION AND TIRE DAMAGE MAY RESULT TO THE VEHICLE!</p> <p>** ICON VEHICLE DYNAMICS RECOMMENDS THAT YOU EXERCISE EXTREME CAUTION WHEN WORKING UNDER A VEHICLE THAT IS SUPPORTED WITH JACK STANDS.</p> <p>** ICON VEHICLE DYNAMICS RECOMMENDS ALL INSTALLATION TO BE PERFORMED BY A PROFESSIONAL SHOP/SERVICE TECHNICIAN. PRODUCT FAILURE CAUSED BY IMPROPER INSTALLATION WILL NOT BE COVERED UNDER ICON'S WARRANTY POLICY.</p>

INSTALLATION

1. Place the truck on a flat surface with the parking brake engaged, chock the front tires.
2. Use a suitable floor jack in the manufacturer designated spot on the frame to lift the rear of the truck, then place a suitable jack stand under the frame and set the truck down securely on the jack stand. NEVER WORK UNDER AN UNSUPPORTED VEHICLE. Remove the rear wheels and tires.
3. Remove the outer bolt holding the toe link to the knuckle using a 24mm. The OEM hardware will be reused. [FIGURE 1]

FIG.1



4. Remove the inner cam bolt and nut holding the toe link to the frame using a 21mm. The OEM hardware will be reused. [FIGURE 2 & 3]

FIG.2



FIG.3



5. Install the new ICON toe link to the knuckle using the OEM hardware and supplied heim spacers. The conical faced spacer seats into the knuckle. [FIGURE 4 & 5]

FIG.4



FIG.5



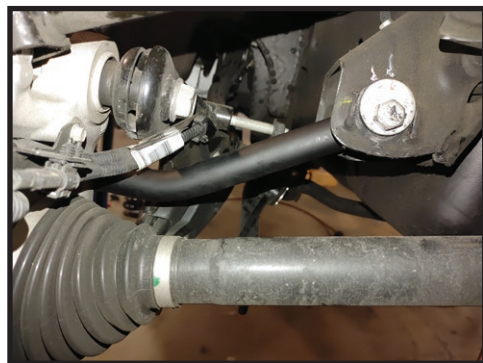
NOTE: The toe link is bent to clear the trailing arm pocket as the suspension droops out.

6. Install the remaining heim spacers into the toe link and install into the frame pocket using the OEM cam bolt and nut. [FIGURE 6 & 7]

FIG.6



FIG.7



7. Repeat process on passenger side.

8. Get vehicle professionally aligned after install of toe link and coilovers.

VERIFY ALL FASTENERS ARE PROPERLY TORQUED BEFORE DRIVING VEHICLE.

RETORQUE ALL NUTS, BOLTS AND LUGS AFTER 100 MILES AND PERIODICALLY THEREAFTER.

ICON VEHICLE DYNAMICS LIMITED LIFETIME WARRANTY

ICON Vehicle Dynamics warrants to the original retail purchaser who owns the vehicle on which the product was originally installed. ICON Vehicle Dynamics does not warrant the product for finish, alterations, modifications and/or installation contrary to ICON Vehicle Dynamics instructions. ICON Vehicle Dynamics products are not designed, nor are they intended to be installed on vehicles used in race applications, for racing purposes or for similar activities. (A "race" is defined as any contest between two or more vehicles, or a contest of one or more vehicles against the clock, whether or not such contest is for a prize). This warranty does not include coverage for police or taxi vehicles, race vehicles, or vehicles used for government or commercial purposes. Also excluded from this warranty are sales outside of the United States of America and Canada.

ICON Vehicle Dynamics' obligation under this warranty is limited to the repair or replacement, at ICON Vehicle Dynamics' discretion, of the defective product. Any and all costs of removal, installation or re-installation, freight charges and incidental or consequential damages are expressly excluded from this warranty. Items that are subject to wear are not considered defective when worn and are not covered.

ICON Vehicle Dynamics components must be installed as a complete kit as shown in our current application guide. Any substitutions or exemptions of required components will immediately void the warranty. Some finish damage may happen to parts during shipping and is not covered under warranty.

This warranty is expressly in lieu of all other warranties expressed or implied. This warranty shall not apply to any product that has been improperly installed, modified or customized subject to accident, negligence, abuse or misuse.



ICON VEHICLE DYNAMICS®
PERFORMANCE SUSPENSION SYSTEMS AND SHOCK ABSORBERS

7929 Lincoln Ave. Riverside, CA 92504 Phone: 951.689.ICON Fax: 951.689.1016
www.iconvehicledynamics.com



FOLLOW US ON FACEBOOK!



PART #	DESCRIPTION
71657	2021 GM SUV 2.5 RR COILOVER KIT

COMPONENTS INCLUDED	
(1) 174963RD 21 GM SUV 2.5 VS RR CO (DRVR)	(2) 250002O 7.5" OFFSET RESI MOUNT
(1) 174963RP 21 GM SUV 2.5 VS RR C (PASS)	(1) 611019 COILOVER HARDWARE KIT
	(1) 611051 HOSE CLAMP KIT
HARDWARE INCLUDED	
(2) 605131 3/8 SPLIT LOCK WASHER	(2) 605144 3/8-12 X .75 FLANGED SELF TAP
611019 HARDWARE KIT	
(6) 605101 3/8-16 X 1.000 BOLT	(6) 605131 3/8 SPLIT LOCK WASHER
TOOLS REQUIRED	
JACK JACK STANDS DRILL 11/32" DRILL BIT TORQUE WRENCH	5/16" NUT DRIVER 9/16" SOCKET / WRENCH 8MM SOCKET / WRENCH 15MM SOCKET / WRENCH 18MM SOCKET / WRENCH
TECH NOTES	
<p>1. YOUR ICON COILOVER ASSEMBLIES COME FACTORY CHARGED TO 250 PSI. RELEASING NITROGEN PRESSURE MAY LEAD TO SHOCK MALFUNCTION AND REDUCED RIDE QUALITY. FAILURE CAUSED BY LOW NITROGEN PRESSURE IS NOT COVERED UNDER ICON'S WARRANTY POLICY.</p> <p>2. YOUR ICON COILOVER ASSEMBLIES COME SHIPPED AT ICON'S RECOMMENDED RIDE HEIGHT. REDUCING DROOP TRAVEL WILL REDUCE RIDE QUALITY. DO NOT PRELOAD THE COIL BEYOND 1.125" OF EXPOSED THREADS BETWEEN THE BOTTOM OF THE TOP CAP AND THE TOP OF THE COIL ADJUSTER NUT. ADJUSTING PRELOAD BEYOND THIS SETTING WILL CAUSE THE COIL TO BIND AND DAMAGE WILL OCCUR TO COILOVER AND/OR VEHICLE.</p> <p>3. ESTIMATED INSTALL TIME: 2 HOURS.</p>	



WARNING!

**** READ ALL INSTRUCTIONS THOROUGHLY FROM START TO FINISH BEFORE BEGINNING INSTALLATION! IF THESE INSTRUCTIONS ARE NOT PROPERLY FOLLOWED SEVERE FRAME, SUSPENSION AND TIRE DAMAGE MAY RESULT TO THE VEHICLE!**

**** ICON VEHICLE DYNAMICS RECOMMENDS THAT YOU EXERCISE EXTREME CAUTION WHEN WORKING UNDER A VEHICLE THAT IS SUPPORTED WITH JACK STANDS.**

**** ICON VEHICLE DYNAMICS RECOMMENDS ALL INSTALLATION TO BE PERFORMED BY A PROFESSIONAL SHOP/SERVICE TECHNICIAN. PRODUCT FAILURE CAUSED BY IMPROPER INSTALLATION WILL NOT BE COVERED UNDER ICON'S WARRANTY POLICY.**

INSTALLATION

1. Using a properly rated jack, raise the front of the vehicle and support the frame rails with jack stands. Ensure the jack stands are secure and set properly before lowering the jack. NEVER WORK UNDER AN UNSUPPORTED VEHICLE. Remove the front wheels.
2. Using a floor jack, support the lower control arm (LCA) to prevent the suspension from being at full extension.
3. Remove the wiring harness mounts from the studs of the factory coilovers. A long flathead screwdriver helps to remove the harness on the passenger side.
4. Remove the nuts from the studs using an 18mm. [FIGURE 1]

FIG.1



FIG.2



5. Remove the bolts from the bar pin using a 15mm. [FIGURE 2]

6. Disconnect the brake line brackets from the upper control arm (UCA) using a 10mm. [FIGURE 3]

FIG.3



FIG.4

7. Disconnect the UCA from the steering knuckle using an 18mm. Take care to not overextend the CV joints. Support the steering knuckle using heavy duty zip ties, safety wire, tie downs, or bungee cords. [FIGURE 4]

8. Lower the LCA enough to rotate and remove the coilover assembly.

9. Refer to ICON UCA instructions.

10. Mount the ICON coilover to the coil bucket using the supplied 3/8" coilover hardware and a 9/16". [Torque to 35 ft-lbs]

11. Mount the bar pin to the LCA using the factory bolts and a 15mm. [Torque to factory spec]

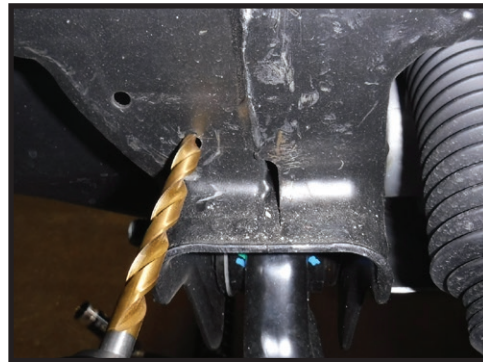
12. Connect the spindle to the UCA using the factory nut and an 18mm. [Torque to factory spec]

13. Using an 11/32" drill bit, drill out the hole in the frame as shown. [FIGURE 5 & 6]

FIG.5



FIG.6



14. Use the supplied self-tapping 3/8" screw to tap the drilled hole.

15. Mount the reservoir bracket to the frame using the self-tapping screw and a 9/16". The bracket should be offset forward moving the reservoir further from the coilover.

16. Mount the reservoir to the bracket using the supplied hose clamps. Fasten using a 5/16" but do not overtighten. [FIGURE 7]

FIG.7



17. Mount the brake line to the UCA using the factory hardware and a 10mm. [Torque to factory spec]

18. Reinstall wheels and lower vehicle to the ground. [Torque lugs to factory spec]

19. Have the vehicle professionally aligned.

ICON VEHICLE DYNAMICS LIABILITY DISCLAIMER

ICON does not make any representations or warranties regarding the fitness of any ICON product for a particular installation or conformance of any ICON product with a particular vehicle application. Installation of any ICON suspension system is at the sole discretion of the end user and in making a purchase of any ICON suspension system, the purchaser assumes the responsibility and liability for any and all damage or injury, of any kind or nature whatsoever, caused by, resulting from, arising out of, or occurring in connection with the use or installation of any ICON suspension system. ICON is not liable for and specifically disavows any installation that is not in conformance with original equipment manufacturer's recommendations or instructions. Purchaser agrees that in the event of any claim or lawsuit arising out of the installation or use of an ICON suspension system, purchaser shall indemnify and hold harmless ICON, its agents, employees, officers and owners from and against any and all loss, expense, damage or injury that ICON may sustain as the result of such claim. [If applicable, ICON defers to and recommends recalibration of any/all vehicle stability systems after suspension installation.]

2.5 VS SERIES SHOCK & COILOVER TECHNICAL INFORMATION

MAINTENANCE

ICON shock absorbers are a high quality rebuildable race style shock absorber designed for optimal performance. With a unit of this caliber on your vehicle, routine maintenance is required to keep them looking and operating in like new condition. Residual oil and assembly lube may be present at all seal paths from the factory out of the box and is considered normal. Pooling of oil however is not acceptable at any time and one should contact the ICON dealer where purchased.

BELOW ARE GUIDELINES BASED ON HOW YOU USE YOUR VEHICLE BUT YOUR MILEAGE MAY VARY:

STREET USE:

- Send in for factory servicing every 40,000 miles or if a leak develops, ride quality decreases, or they begin to make excessive noise.
- Remove any buildup of road salt, mud, or debris from shocks and coil springs anytime accrued
- Clean with mild soap and water with each oil change or anytime you notice build up.
- Wax the cylinders yearly with automotive wax to prevent corrosion.
- Check nitrogen pressure yearly. (252004 charge needle assembly available at any ICON distributor)
- Check bearings for excessive wear yearly.
- DO NOT apply any type of lube to the upper and lower bearings.

STREET/DIRT:

- Send in for factory servicing every 15,000 miles or if a leak develops, ride quality decreases, or they begin to make excessive noise.
- Clean with mild soap and water with each oil change, offroad trip, or anytime you notice build up.
- Wax the cylinders yearly with automotive wax to prevent corrosion.
- Check nitrogen pressure each dirt outing. (252004 charge needle assembly available at any ICON distributor)
- Check bearings for excessive wear yearly.
- DO NOT apply any type of lube to the upper and lower bearings.

DIRT USE:

- Send in for factory servicing every 1,000 miles.
- Check nitrogen pressure each outing. (252004 charge needle assembly available at any ICON distributor)
- Remove any buildup of mud or debris from shocks and coil springs after every outing.

SELF-SERVICE:

- Contact ICON for service kits & tools at (951) 689-4266.

PRODUCT REGISTRATION

Please visit: <http://www.iconvehicledynamics.com/tech-support/registration/> to register your product.

ICON VEHICLE DYNAMICS SHOCK ABSORBER WARRANTY

This shock absorber has a 1 year warranty against any manufacturer's defects. If a shock fails within the initial year of ownership, the shock must be shipped to ICON Vehicle Dynamics for inspection and service. If a shock is inspected and it has been determined the shock failed due to neglect, damage caused by improper installation or any other reason besides "normal wear and tear", the owner of said shock is responsible for all service costs. This includes labor, parts, and shipping.

ICON Vehicle Dynamics warrants to the original retail purchaser who owns the vehicle on which the product was originally installed. ICON Vehicle Dynamics does not warrant the product for finish, alterations, modifications and/or installation contrary to ICON Vehicle Dynamics instructions. ICON Vehicle Dynamics products are not designed, nor are they intended to be installed on vehicles used in race applications, for racing purposes or for similar activities. (A "race" is defined as any contest between two or more vehicles, or a contest of one or more vehicles against the clock, whether or not such contest is for a prize). This warranty does not include coverage for police or taxi vehicles, race vehicles, or vehicles used for government or commercial purposes. Also excluded from this warranty are sales outside of the United States of America and Canada.

ICON Vehicle Dynamics' obligation under this warranty is limited to the repair or replacement, at ICON Vehicle Dynamics' discretion, of the defective product. Any and all costs of removal, installation or re-installation, freight charges and incidental or consequential damages are expressly excluded from this warranty. Items that are subject to wear are not considered defective when worn and are not covered.

ICON Vehicle Dynamics components must be installed as a complete kit as shown in our current application guide. Any substitutions or exemptions of required components will immediately void the warranty. Some finish damage may happen to parts during shipping and is not covered under warranty.

This warranty is expressly in lieu of all other warranties expressed or implied. This warranty shall not apply to any product that has been improperly installed, modified or customized subject to accident, negligence, abuse or misuse.

To send a shock in for warranty please visit our website <http://www.iconvehicledynamics.com/tech-support/shock-service/>



ICON VEHICLE DYNAMICS®
PERFORMANCE SUSPENSION SYSTEMS AND SHOCK ABSORBERS

7929 Lincoln Ave. Riverside, CA 92504 Phone: 951.689.ICON Fax: 951.689.1016
www.iconvehicledynamics.com



FOLLOW US ON FACEBOOK!



PART #	DESCRIPTION
71660	21 GM SUV REAR 2.5 VS RR COILOVER KIT

COMPONENTS INCLUDED	
(1) 174960RD 21-23 GM SUV REAR 2.5-3.5" CO 2.5 VS RR DRV (1) 174960RP 21-23 GM SUV REAR 2.5-3.5" CO 2.5 VS RR PASS	(1) 611019 COILOVER HARDWARE KIT (1) 611051 #36 1.188-2.750 STAINLESS HOSE CLAMP KIT (4)
HARDWARE INCLUDED	
(2) 250014 8.5 FACE OFF SET RESI MOUNT (2) 605144 3/8-12 X .750 FLANGED SELF TAP BOLT CZINC (6) 605101 3/8-16 X 1.000 HHCS GR8 YZINC	(8) 605131 3/8 SPLIT LOCK WAS GR8 YZINC (6) 605133 3/8 SAE FLAT WASHER GR8 YZINC
TOOLS REQUIRED	
FLOOR JACK JACK STANDS SHARPIE DRILL 11/32 DRILL BIT	T15 TORX 9/16 SOCKET/WRENCH 5/16 NUT DRIVER 13, 18, 24MM SOCKET/WRENCH TORQUE WRENCH
TECH NOTES	
<p>1. YOUR ICON SHOCK ASSEMBLIES COME FACTORY CHARGED TO 250 PSI. RELEASING NITROGEN PRESSURE MAY LEAD TO SHOCK MALFUNCTION AND REDUCED RIDE QUALITY. FAILURE CAUSED BY LOW NITROGEN PRESSURE IS NOT COVERED UNDER ICON'S WARRANTY POLICY.</p> <p>2. 71020 TOE LINK REQUIRED FOR PROPER SUSPENSION CLEARANCE AND GEOMETRY.</p> <p>3. INSTALL TIME: 3-4 HOURS.</p>	



WARNING!

**** READ ALL INSTRUCTIONS THOROUGHLY FROM START TO FINISH BEFORE BEGINNING INSTALLATION! IF THESE INSTRUCTIONS ARE NOT PROPERLY FOLLOWED SEVERE FRAME, SUSPENSION AND TIRE DAMAGE MAY RESULT TO THE VEHICLE!**

**** ICON VEHICLE DYNAMICS RECOMMENDS THAT YOU EXERCISE EXTREME CAUTION WHEN WORKING UNDER A VEHICLE THAT IS SUPPORTED WITH JACK STANDS.**

**** ICON VEHICLE DYNAMICS RECOMMENDS ALL INSTALLATION TO BE PERFORMED BY A PROFESSIONAL SHOP/SERVICE TECHNICIAN. PRODUCT FAILURE CAUSED BY IMPROPER INSTALLATION WILL NOT BE COVERED UNDER ICON'S WARRANTY POLICY.**

INSTALLATION

1. Place the truck on a flat surface with the parking brake engaged, chock the rear tires.
2. Use a suitable floor jack in the manufacturer designated spot on the frame to lift the rear of the truck, then place a suitable jack stand under the frame and set the truck down securely on the jack stand. NEVER WORK UNDER AN UNSUPPORTED VEHICLE. Remove the rear wheels and tires.
3. Begin by removing the rear portion of the fender liner using a T15 torx bit. The rear portion will fold out of the way to access the top of the coilover hardware. [FIGURE 1]

FIG.1



4. Support the lower control arm. Remove the upper coilover nuts using an 18mm. [FIGURE 2]

FIG.2



5. Remove the lower arm pivot bolt at the knuckle using a 24mm. [FIGURE 3]

FIG.3



6. Remove the brake line tabs from the lower control arm using a 13mm. [FIGURE 4]

FIG.4



7. Remove the lower control arm bolt and nut using an 18mm. Remove the coilover from the vehicle and set aside. [FIGURE 5 & 6]

FIG.5



FIG.6



8. Grab the ICON coilover assembly now and install the upper mount into the coil bucket using the supplied 3/8 bolts, flat washer and split lock washer. The split lock washer goes on the bolt before the flat washer. Torque to 35 ft-lbs. [FIGURE 7 & 8]

FIG.7



FIG.8



9. Install the lower coilover hardware using the OEM bolt and nut. Torque to 100 ft-lbs. [FIGURE 9]

FIG.9



10. Reinstall the brake line bracket and lower control arm pivot bolt. Torque the pivot bolt to 180 ft-lbs.

11. Use a pliers to bend the brake line bracket up to relieve some tension on the brake line from the added droop travel. [FIGURE 10 & 11]

FIG.10



FIG.11



12. Install the remote reservoir now using the supplied bracket, hose clamp and self-tapping 3/8 bolt and 3/8 split locker washer. Hold the reservoir and bracket up to position and mark the hole for drilling with the 11/32 drill bit. Once drilled, install the bracket with hose clamps installed, then attach the reservoir. (Some models may have an exhaust on the driver side. The reservoir will need to be mounted a little higher on the frame to clear.) [FIGURE 12 & 13]

FIG.12



FIG.13



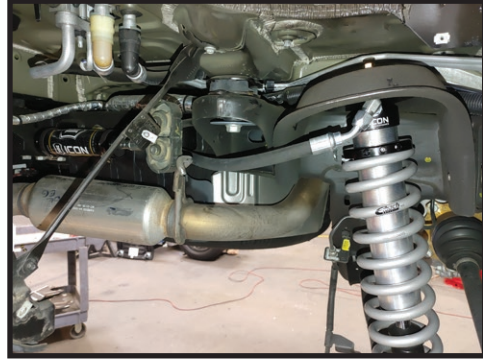
13. Reinstall the fender liner now.

14. Repeat on passenger side. Passenger side reservoir location is similar but needs to clear the plastic splash guard and exhaust.
[FIGURE 14 & 15]

FIG.14



FIG.15



VERIFY ALL FASTENERS ARE PROPERLY TORQUED BEFORE DRIVING VEHICLE.

RETORQUE ALL NUTS, BOLTS AND LUGS AFTER 100 MILES AND PERIODICALLY THEREAFTER.

2.5 VS SERIES SHOCK & COILOVER TECHNICAL INFORMATION

MAINTENANCE

ICON shock absorbers are a high quality rebuildable race style shock absorber designed for optimal performance. With a unit of this caliber on your vehicle, routine maintenance is required to keep them looking and operating in like new condition. Residual oil and assembly lube may be present at all seal paths from the factory out of the box and is considered normal. Pooling of oil however is not acceptable at any time and one should contact the ICON dealer where purchased.

BELOW ARE GUIDELINES BASED ON HOW YOU USE YOUR VEHICLE BUT YOUR MILEAGE MAY VARY:

STREET USE:

- Send in for factory servicing every 40,000 miles or if a leak develops, ride quality decreases, or they begin to make excessive noise.
- Remove any buildup of road salt, mud, or debris from shocks and coil springs anytime accrued
- Clean with mild soap and water with each oil change or anytime you notice build up.
- Wax the cylinders yearly with automotive wax to prevent corrosion.
- Check nitrogen pressure yearly. (252004 charge needle assembly available at any ICON distributor)
- Check bearings for excessive wear yearly.
- DO NOT apply any type of lube to the upper and lower bearings.

STREET/DIRT:

- Send in for factory servicing every 15,000 miles or if a leak develops, ride quality decreases, or they begin to make excessive noise.
- Clean with mild soap and water with each oil change, offroad trip, or anytime you notice build up.
- Wax the cylinders yearly with automotive wax to prevent corrosion.
- Check nitrogen pressure each dirt outing. (252004 charge needle assembly available at any ICON distributor)
- Check bearings for excessive wear yearly.
- DO NOT apply any type of lube to the upper and lower bearings.

DIRT USE:

- Send in for factory servicing every 1,000 miles.
- Check nitrogen pressure each outing. (252004 charge needle assembly available at any ICON distributor)
- Remove any buildup of mud or debris from shocks and coil springs after every outing.

SELF-SERVICE:

- Contact ICON for service kits & tools at (951) 689-4266.

PRODUCT REGISTRATION

Please visit: <http://www.iconvehicledynamics.com/tech-support/registration/> to register your product.

ICON VEHICLE DYNAMICS SHOCK ABSORBER WARRANTY

This shock absorber has a 1 year warranty against any manufacturer's defects. If a shock fails within the initial year of ownership, the shock must be shipped to ICON Vehicle Dynamics for inspection and service. If a shock is inspected and it has been determined the shock failed due to neglect, damage caused by improper installation or any other reason besides "normal wear and tear", the owner of said shock is responsible for all service costs. This includes labor, parts, and shipping.

ICON Vehicle Dynamics warrants to the original retail purchaser who owns the vehicle on which the product was originally installed. ICON Vehicle Dynamics does not warrant the product for finish, alterations, modifications and/or installation contrary to ICON Vehicle Dynamics instructions. ICON Vehicle Dynamics products are not designed, nor are they intended to be installed on vehicles used in race applications, for racing purposes or for similar activities. (A "race" is defined as any contest between two or more vehicles, or a contest of one or more vehicles against the clock, whether or not such contest is for a prize). This warranty does not include coverage for police or taxi vehicles, race vehicles, or vehicles used for government or commercial purposes. Also excluded from this warranty are sales outside of the United States of America and Canada.

ICON Vehicle Dynamics' obligation under this warranty is limited to the repair or replacement, at ICON Vehicle Dynamics' discretion, of the defective product. Any and all costs of removal, installation or re-installation, freight charges and incidental or consequential damages are expressly excluded from this warranty. Items that are subject to wear are not considered defective when worn and are not covered.

ICON Vehicle Dynamics components must be installed as a complete kit as shown in our current application guide. Any substitutions or exemptions of required components will immediately void the warranty. Some finish damage may happen to parts during shipping and is not covered under warranty.

This warranty is expressly in lieu of all other warranties expressed or implied. This warranty shall not apply to any product that has been improperly installed, modified or customized subject to accident, negligence, abuse or misuse.

To send a shock in for warranty please visit our website <http://www.iconvehicledynamics.com/tech-support/shock-service/>



ICON VEHICLE DYNAMICS®
PERFORMANCE SUSPENSION SYSTEMS AND SHOCK ABSORBERS

7929 Lincoln Ave. Riverside, CA 92504 Phone: 951.689.ICON Fax: 951.689.1016
www.iconvehicledynamics.com



FOLLOW US ON FACEBOOK!



7929 Lincoln Ave. Riverside, CA 92504
Phone: 951.689.ICON Fax: 951.689.1016

PART #	DESCRIPTION
78720DJ	2019-UP GM 1500 BILLET UCA KIT

COMPONENTS INCLUDED

(1) 177515 19-UP GM 1500 BILLET UCA (DRVR) (1) 177516 19-UP GM 1500 BILLET UCA (PASS)

HARDWARE INCLUDED

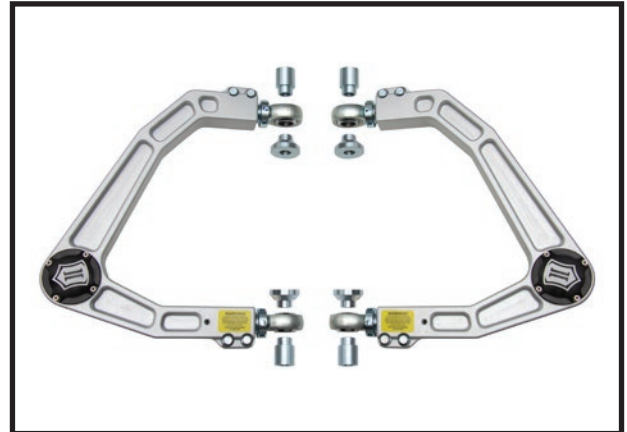
(2) 155110 -O32 O-RING NITRILE (4) 295511 ROD END JM12T F1 FIT
(2) 157507 BILLET UCA DUST COVER (4) 297010 HEIM SPACER JM12 X 14MM X 1.875
(2) 157517BJ DELTA JOINT (8) 605002 6-32 X .500 SHCS 18-8
(4) 157520 L-R ADJ SLEEVE 1.00-14L / .75-16 (8) 605145 3/8-16 X 1.000 12PT
(4) 197503 HEIM SPACER RSMX12 X 14MM X 2.775 (1) 605968 BLUE THREAD LOCKER 2ML BULLET

TOOLS REQUIRED

JACK 3/8" 12PT SOCKET / WRENCH
JACK STANDS 10MM SOCKET / WRENCH
GRINDER W/ CUT-OFF WHEEL 18MM SOCKET / WRENCH
TORQUE WRENCH 21MM SOCKET / WRENCH

TECH NOTES

1. ICON UPPER CONTROL ARMS ALLOW FOR ADDITIONAL DROOP TRAVEL WHEN PAIRED WITH ICON'S EXTENDED TRAVEL COILOVERS (PN: 71606, 71656, OR 71656C).
2. DO NOT EXCEED 1.875" ADJUSTMENT FROM THE CENTER OF THE ROD END TO THE EDGE OF THE BILLET UPPER CONTROL ARM. FAILURE CAUSED BY EXCESSIVE ADJUSTMENT WILL NOT BE COVERED UNDER ICON'S WARRANTY POLICY.
3. ALL ICON UPPER CONTROL ARMS HAVE BEEN ENGINEERED TO ALLOW FOR THE MOST POSSIBLE CASTER, WHILE STILL ALLOWING THE VEHICLE TO BE PROPERLY ALIGNED. NOTIFY YOUR PROFESSIONAL ALIGNMENT SHOP OF THIS INFORMATION SO THAT MAXIMUM RIDE QUALITY CAN BE ACHIEVED.
4. ICON DELTA JOINTS ARE PRE-GREASED FROM THE FACTORY. ICON RECOMMENDS GREASING THE DELTA JOINT EVERY 3,000 MILES (OR EVERY OIL CHANGE). ADD NEW GREASE UNTIL ALL OF THE OLD GREASE IS EXPELLED FROM THE BOTTOM OF THE DELTA JOINT ASSEMBLY, WIPE AWAY EXCESS WITH A RAG OR SHOP TOWEL.



WARNING!

**** READ ALL INSTRUCTIONS THOROUGHLY FROM START TO FINISH BEFORE BEGINNING INSTALLATION! IF THESE INSTRUCTIONS ARE NOT PROPERLY FOLLOWED SEVERE FRAME, SUSPENSION AND TIRE DAMAGE MAY RESULT TO THE VEHICLE!**

**** ICON VEHICLE DYNAMICS RECOMMENDS THAT YOU EXERCISE EXTREME CAUTION WHEN WORKING UNDER A VEHICLE THAT IS SUPPORTED WITH JACK STANDS.**

**** ICON VEHICLE DYNAMICS RECOMMENDS ALL INSTALLATION TO BE PERFORMED BY A PROFESSIONAL SHOP/SERVICE TECHNICIAN. PRODUCT FAILURE CAUSED BY IMPROPER INSTALLATION WILL NOT BE COVERED UNDER ICON'S WARRANTY POLICY.**

INSTALLATION

1. Using a properly rated jack, raise the front of the vehicle and support the frame rails with jack stands. Ensure the jack stands are secure and set properly before lowering the jack. NEVER WORK UNDER AN UNSUPPORTED VEHICLE. Remove the front wheels.
2. Remove the ABS line bracket from the upper control arm (UCA) using a 10mm. [FIGURE 1]

FIG.1



FIG.2



3. Loosen the taper on the upper ball joint and the tie rod end using an 18mm socket/wrench. Use a hammer to separate the upper ball joint taper and tie rod end. Take care not to damage the threads. Support the spindle (using safety wire, tie down, etc) so that it does not overextend the CV joints when detached. [FIGURE 2]
4. With the UCA detached from the spindle, begin to loosen the UCA from its mounts in the frame using a 21mm wrench and socket. Once completed, remove the factory UCA's from the vehicle.

5. Cut the factory droop stop off of the side of the coil bucket. Paint the bare metal to prevent corrosion. [FIGURE 3 & 4]

FIG.3

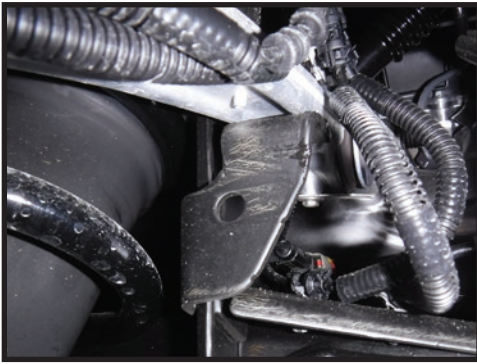


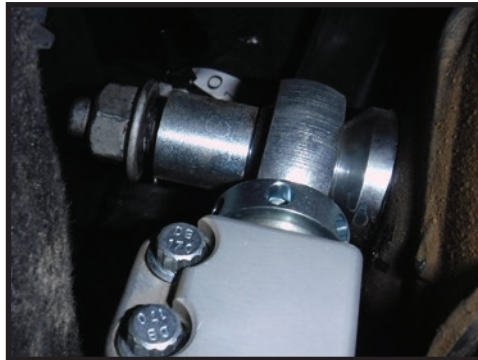
FIG.4



6. Each UCA is clearly labeled which side and direction it should be installed.

7. Insert the supplied heim spacers as shown. Slide the ICON UCA into place and fasten using the factory hardware. [FIGURE 5]

FIG.5



8. Hand tighten OEM hardware using (2) 21mm. [Torque to factory spec]

9. Take care when inserting tapered pin into the spindle to not damage the threads. Hand tighten the ball joint nut onto the tapered pin to align and seat it properly. [Torque to 70 ft-lbs]

10. Reinstall the outer tie rod end. [Torque to factory spec]

11. Repeat steps on passenger side.

12. Install wheels and lower vehicle to the ground. [Torque lugs to factory spec]

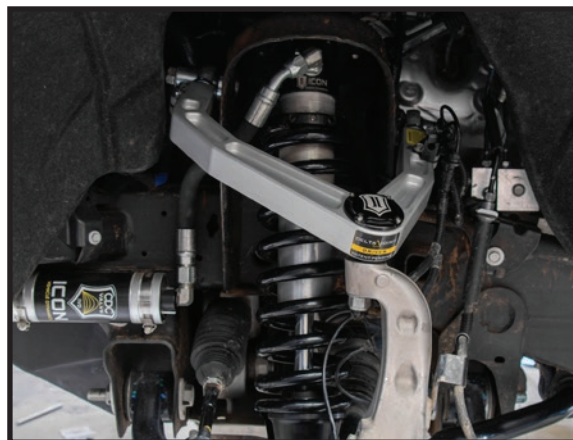
13. ICON billet upper control arms utilize heim joints at each pivot to allow alignment using the adjusters on the upper control arms as well as cam adjusters on the lower control arms. The heims can be extended or contracted by turning the adjustment collar. Make sure that the slit in the collar lines up with the slit in the housing and then tighten the pinch bolts evenly in an opposing pattern at least 3 times. Do not exceed 1.875" of adjustment from the center of the rod end to the edge of the billet UCA. [Torque to 40 ft-lbs]

14. Have the vehicle professionally aligned.

15. Once aligned, apply BLUE thread locker to the outer pinch bolts located on the sides of the arm. Tighten the pinch bolts in an opposing pattern at least 3 times. [Torque to 40 ft-lbs]

VERIFY ALL FASTENERS ARE PROPERLY TORQUED BEFORE DRIVING VEHICLE.

RETORQUE ALL NUTS, BOLTS AND LUGS AFTER 100 MILES AND PERIODICALLY THEREAFTER.



ALIGNMENT NOTE

ICON SHIPS THE BILLET UPPER CONTROL ARM AT THE MOST COMMON ALIGNMENT SETTING. ONE OF THE MAJOR PERFORMANCE ADVANTAGES OF AN ICON BILLET ADJUSTABLE UPPER CONTROL ARM IS THE ABILITY TO IMPROVE WHEEL POSITION. IMPROVING WHEEL POSITION IMPROVES FIREWALL CLEARANCE ALLOWING FOR LARGER TIRES AS THE SUSPENSION CYCLES. IN ORDER TO TAKE ADVANTAGE OF THIS FEATURE, DISCUSS WITH YOUR PROFESSIONAL ALIGNMENT SHOP THAT YOU WOULD LIKE TO CAM THE LOWER CONTROL ARM TO MAXIMIZE WHEEL POSITION FORWARD AND THEN ADJUST CAMBER AND CASTER WITH THE UPPER THREADED ADJUSTERS.

A MAJOR PERFORMANCE ADVANTAGE OF ALL ICON UPPER CONTROL ARMS IS INCREASED CASTER OVER STOCK. DISCUSS WITH A PROFESSIONAL ALIGNMENT SHOP THAT YOU WANT THE VEHICLE ALIGNED WITH THE CASTER AT THE MAX OF THE FACTORY RECOMMENDED SETTINGS IF YOU WANT TO TAKE ADVANTAGE OF THE DYNAMIC EFFECTS OF INCREASED CASTER.

ICON VEHICLE DYNAMICS LIABILITY DISCLAIMER

ICON does not make any representations or warranties regarding the fitness of any ICON product for a particular installation or conformance of any ICON product with a particular vehicle application. Installation of any ICON suspension system is at the sole discretion of the end user and in making a purchase of any ICON suspension system, the purchaser assumes the responsibility and liability for any and all damage or injury, of any kind or nature whatsoever, caused by, resulting from, arising out of, or occurring in connection with the use or installation of any ICON suspension system. ICON is not liable for and specifically disavows any installation that is not in conformance with original equipment manufacturer's recommendations or instructions. Purchaser agrees that in the event of any claim or lawsuit arising out of the installation or use of an ICON suspension system, purchaser shall indemnify and hold harmless ICON, its agents, employees, officers and owners from and against any and all loss, expense, damage or injury that ICON may sustain as the result of such claim. [If applicable, ICON defers to and recommends recalibration of any/all vehicle stability systems after suspension installation.]

ICON VEHICLE DYNAMICS LIMITED LIFETIME WARRANTY

ICON Vehicle Dynamics warrants to the original retail purchaser who owns the vehicle on which the product was originally installed. ICON Vehicle Dynamics does not warrant the product for finish, alterations, modifications and/or installation contrary to ICON Vehicle Dynamics instructions. ICON Vehicle Dynamics products are not designed, nor are they intended to be installed on vehicles used in race applications, for racing purposes or for similar activities. (A "race" is defined as any contest between two or more vehicles, or a contest of one or more vehicles against the clock, whether or not such contest is for a prize). This warranty does not include coverage for police or taxi vehicles, race vehicles, or vehicles used for government or commercial purposes. Also excluded from this warranty are sales outside of the United States of America and Canada.

ICON Vehicle Dynamics' obligation under this warranty is limited to the repair or replacement, at ICON Vehicle Dynamics' discretion, of the defective product. Any and all costs of removal, installation or re-installation, freight charges and incidental or consequential damages are expressly excluded from this warranty. Items that are subject to wear are not considered defective when worn and are not covered.

ICON Vehicle Dynamics components must be installed as a complete kit as shown in our current application guide. Any substitutions or exemptions of required components will immediately void the warranty. Some finish damage may happen to parts during shipping and is not covered under warranty.

This warranty is expressly in lieu of all other warranties expressed or implied. This warranty shall not apply to any product that has been improperly installed, modified or customized subject to accident, negligence, abuse or misuse.



ICON VEHICLE DYNAMICS®
PERFORMANCE SUSPENSION SYSTEMS AND SHOCK ABSORBERS

7929 Lincoln Ave. Riverside, CA 92504 Phone: 951.689.ICON Fax: 951.689.1016
www.iconvehicledynamics.com



FOLLOW US ON FACEBOOK!

