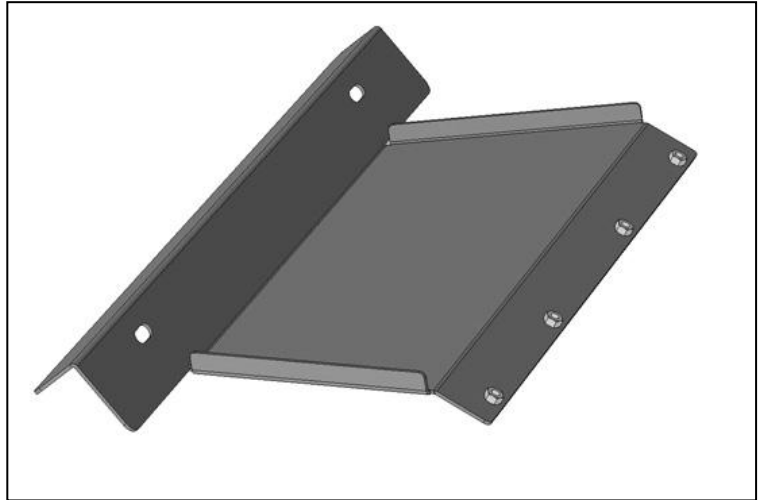


**LD2 FRONT BUMPER SKID PLATE
2015-18 CHEVY COLORADO**

PARTS LIST:

1	LD2 Front Skid Plate
2	10-1.5mm x 30mm Button Head Bolts
2	10mm x 20mm x 2mm Flat Washers
2	10mm Lock Washers
4	8mm x 25mm Button Head Bolts
4	8mm x 24mm x 2mm Flat Washers
4	8mm Lock Washer
1	6mm Wrench
1	5mm Wrench



PROCEDURE:

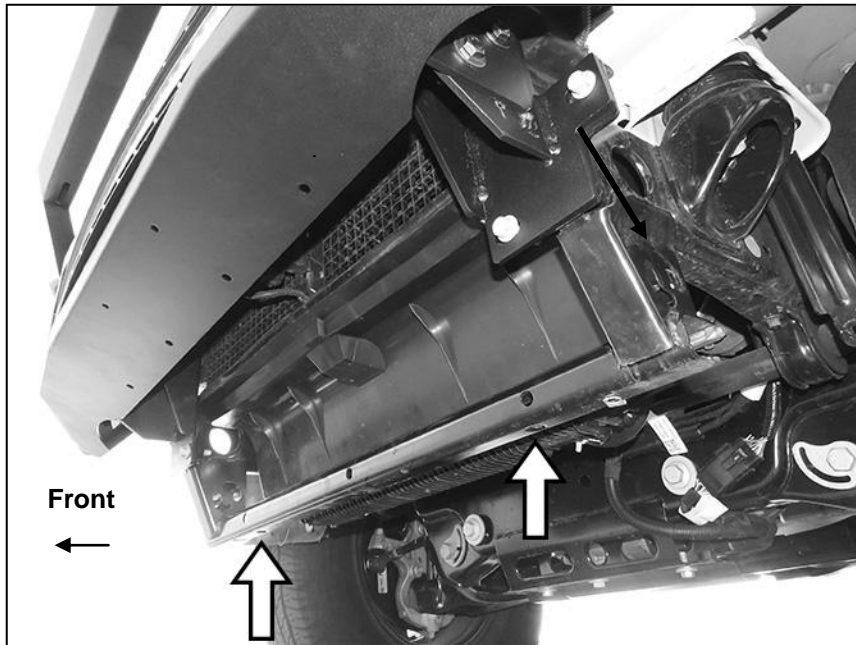
REMOVE CONTENTS FROM BOX. VERIFY ALL PARTS ARE PRESENT. READ INSTRUCTIONS CAREFULLY BEFORE STARTING INSTALLATION. ASSISTANCE IS RECOMMENDED.

CUTTING MAY BE REQUIRED.

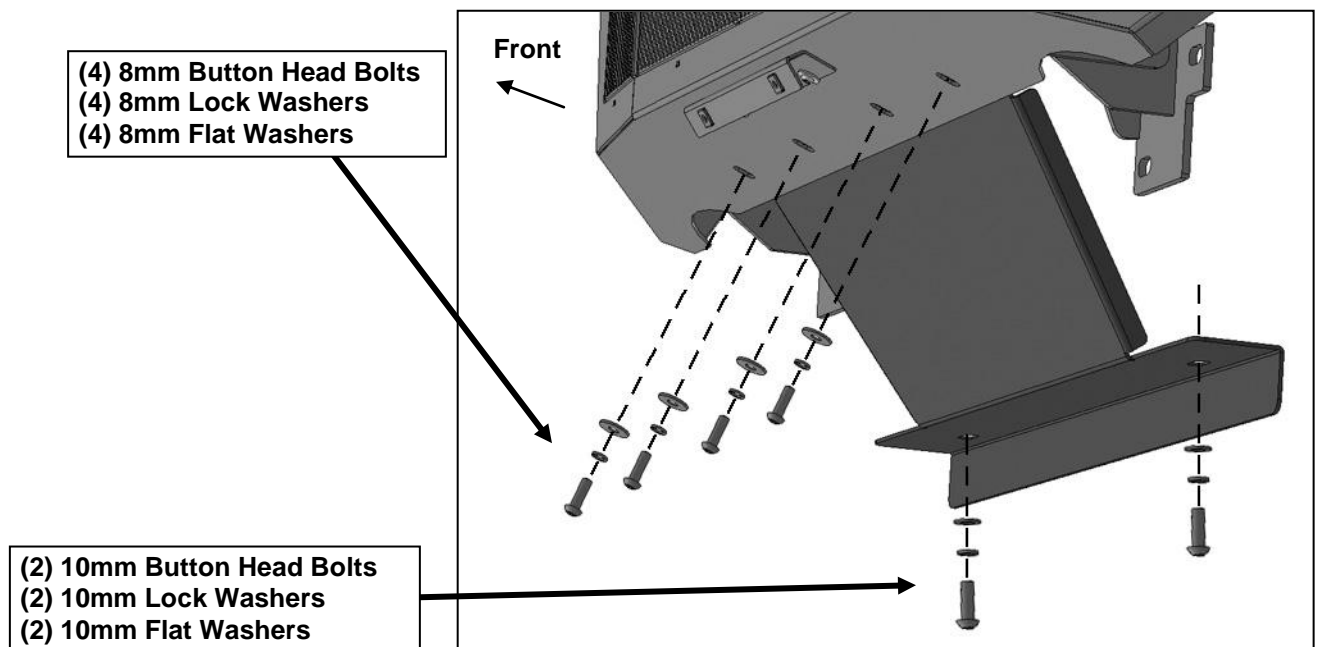
1. Carefully unwrap the Skid Plate. With assistance, line up the front of the Skid Plate with the back of the LD2 Bumper. Attach the Skid Plate to the Bumper with the included (4) 8mm Button Head Bolts, (4) 8mm Lock Washers and (4) 8mm Flat Washers, **(Figures 1 & 2)**. Leave hardware loose at this time.
2. Hold the Skid Plate up against the bottom of the crossmember. Attach the Skid Plate to the crossmember with the included (2) 10mm Button Head Bolts, (2) 10mm Lock Washers and (2) 10mm Flat Washers, **(Figure 2)**.
3. Level and adjust the Skid Plate and fully tighten all hardware.
4. Do periodic inspections to the installation to make sure that all hardware is secure and tight.

To protect your investment, do not use any type of polish or wax that may contain abrasives that could damage the finish. Mild soap may be used to clean the Skid Plate.

**LD2 FRONT BUMPER SKID PLATE
2015-18 CHEVY COLORADO**



**(Fig 1) Attach Skid Plate to back of Bumper
and bottom of cross member (arrows)**



(Fig 2) Skid Plate fully installed