



INSTALLATION MANUAL

RSC15MC1B4S

Level of Difficulty

Easy

Installation difficulty levels are based on time and effort involved and may vary depending on the installer level of expertise, condition of the vehicle and proper tools and equipment.

Parts List

Qty	Description
1	Driver / left running board
1	Passenger / right running board
16	Screw, M8 x 1.25" x 30
16	Flat washer, 5/16"
16	U-nut, M8 x 1.25"
16	Lock washer, M8

Tools Required

Ratchet	Torque wrench
Socket, 13mm	Level
Flathead screwdriver	--

Torque Specifications

Metric	M6 bolt	3 ft-lbs.
	M8 bolt	7 ft-lbs.
	M10 bolt	16 ft-lbs.
	M12 bolt	28 ft-lbs.
SAE	1/4" bolt	3 ft-lbs.
	5/16" bolt	7 ft-lbs.
	3/8" bolt	16 ft-lbs.
	7/16" bolt	20 ft-lbs.
	1/2" bolt	28 ft-lbs.

Use above torque setting unless otherwise noted

Product Photo



NOTICE

Visit www.ranchhand.com for a full-color copy of this instruction manual, as well as helpful videos, guides and much more!

Before you begin installation, read all instructions thoroughly.

Proper tools will improve the quality of installation and reduce the time required.

Periodic inspection of your product should be performed to ensure all hardware and / or components remain secure.

To help prevent damage to the product or vehicle, refer to the specified torque specifications when securing hardware during the installation process.

Maintenance

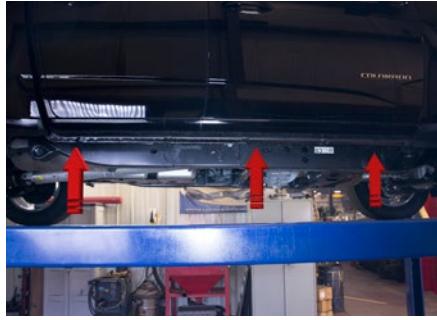
Mild automotive detergent may be used to clean the product. Do not use dish detergent, abrasive cleaners, abrasive pads, wire brushes or other similar products that may damage the finish.

Product Registration and Warranty

Ranch Hand stands behind our products with industry-leading warranties. To get copies of the product warranties, register your purchase or provide feedback, visit: warranty.curtgroup.com/surveys

Step 1

Starting on the driver side, locate the four mounting locations underneath the vehicle.



Step 2

Remove the two hole plugs next to each mounting location.

Insert a clip nut through the access hole and align it over the adjacent smaller hole. Insert a second clip nut over the lower mounting tab.

Repeat for all of the mounting locations.

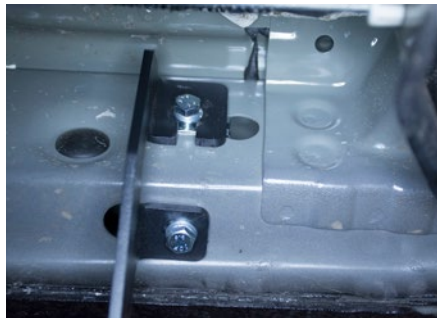


Step 3

With help, lift the step into position and align the brackets with the mounting points on the vehicle.

Secure the step with eight M8 hex bolts, eight lock washers and eight flat washers.

Tighten all hardware to the recommended torque specifications listed in the table on the first page.



Step 4

Repeat steps 1 through 3 on the passenger side of the vehicle.

To protect your investment, see the 'Notes and Maintenance' section on page one.

Congratulations on the installation of your new Ranch Hand running steps.

