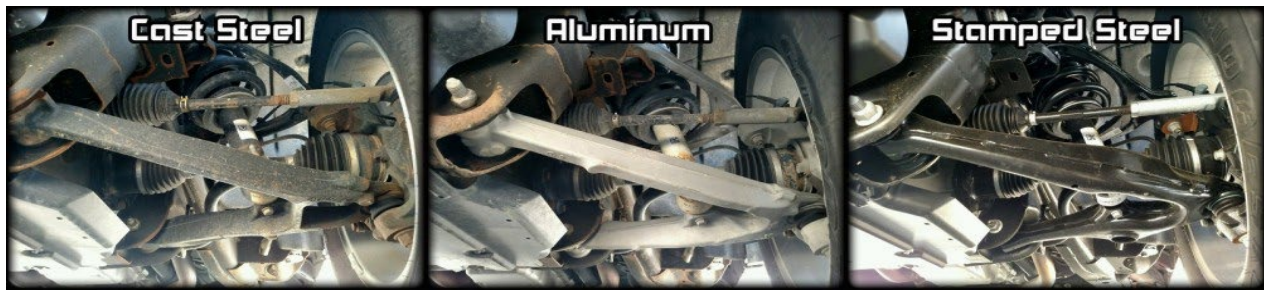




**PART# 701345**

**2007-2016 GM 1500 2WD  
W/ CAST STEEL SUSPENSIN ONLY**

**4.5" FRONT LIFT SPINDLES**



**3 HOUR INSTALL TIME**



**WARNING**

Max Trac Suspension recommends using an 17" x 9" wheel w/ 4.75" back spacing. Any wheel that is wider or has less back spacing "i.e. Deep Dish Wheels" can cause component failure and will void the warranty. Max Trac Suspension also recommends using a 33" x 11.5" tire with the spindle only or a 35" x 12.5" tire when combining a strut spacer with our spindle.

Components	Hardware
(1) 701345D DRIVE SIDE SPINDLE	(4) 1/4" LOOM CLAMP
(1) 701345 PASSENGER SIDE SPINDLE	(2) 3/8" LOOM CLAMP
(2) 511300 EXTENDED BRAKE LINE	

**Please double check the parts list before beginning installation to ensure all parts are present. If there is something missing, please contact Maxtrac Suspension (714) 630-0363. Please have the boxes present if parts are missing or damaged**

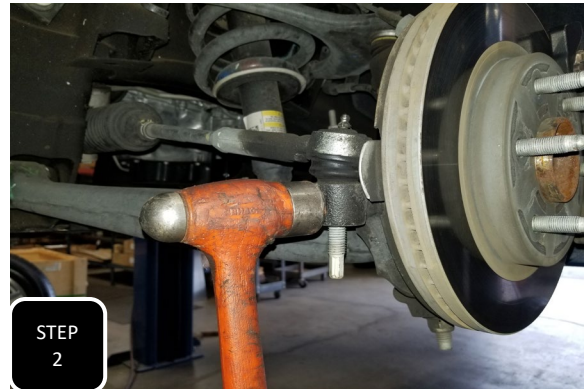
**PRIOR TO INSTALLATION:**

- 1. Factory service manual is recommended to have on hand.**
- 2. Secure and properly block vehicle prior to beginning installation.**
- 3. Always wear safety glasses when using power tools or working under the vehicle**
- 4 Modification to any part will void the warranty associated with that product**

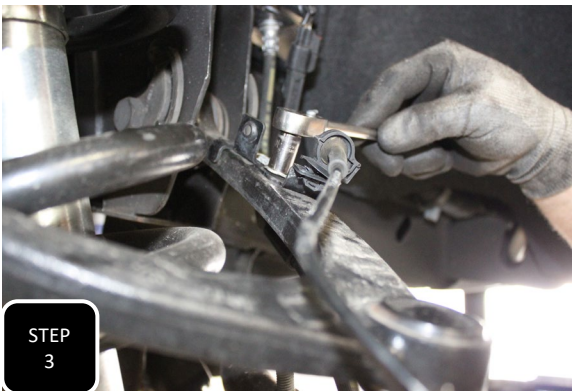
AFTER REMOVING PARTS FROM VEHICLE, SAVE HARDWARE FOR REINSTALLATION



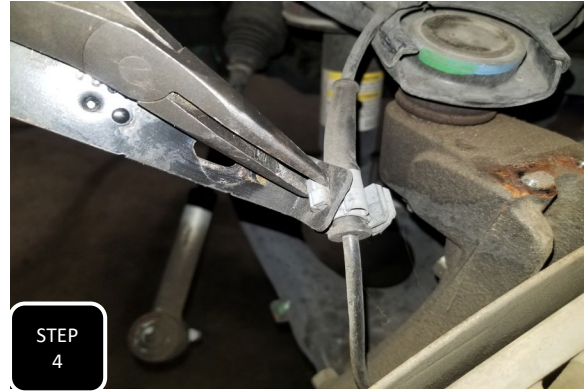
**Step 1** Jack up the front of the of the vehicle and support under the frame rails with jack stands. Remove both front tires and proceed with one side at a time.



**Step 2** Remove the nut attaching the outer tie rod to the steering knuckle and then break loose by hitting the side of the spindle with a hammer right at the joint. **NOTE: NEVER HIT THE TIE ROD ON THE THREADS**



**Step 3** Unbolt the ABS line from the control arm and then open up the clip and remove the line from the clip.



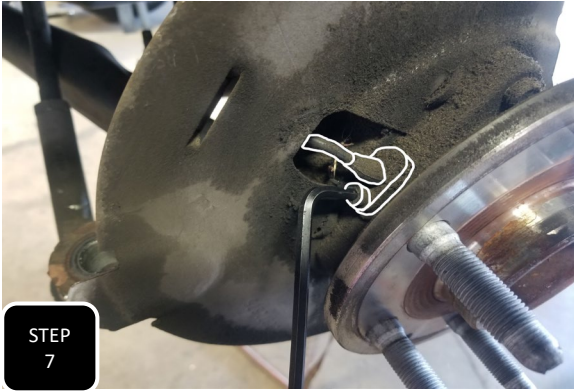
**Step 4** Unbolt the ABS guide bracket from the top of the spindle, then separate the grey plastic clip from the bracket and finally remove the wire from the clip.



**Step 5** Unbolt the brake caliper and support it up, out of the way. **NOTE: NEVER ALLOW THE CALIPER TO HANG BY THE BRAKE LINE.**



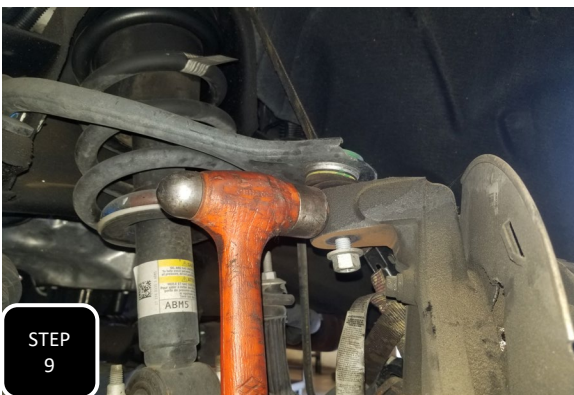
**Step 6** Unbolt the brake rotor and remove. **NOTE: IF THE BRAKE ROTOR IS STUCK, HIT IT WITH A HAMMER A FEW TIMES WHERE THE WHEEL MOUNTS TO THE ROTOR. NEVER HIT THE BRAKING SURFACE.**



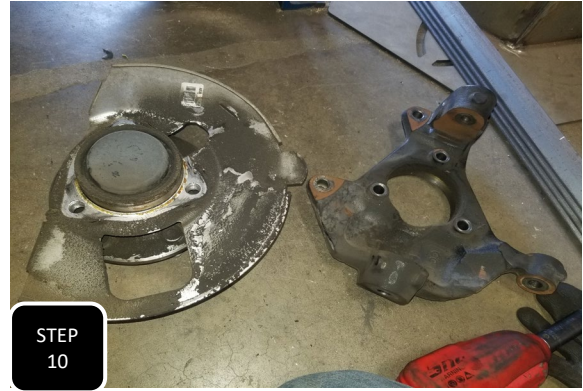
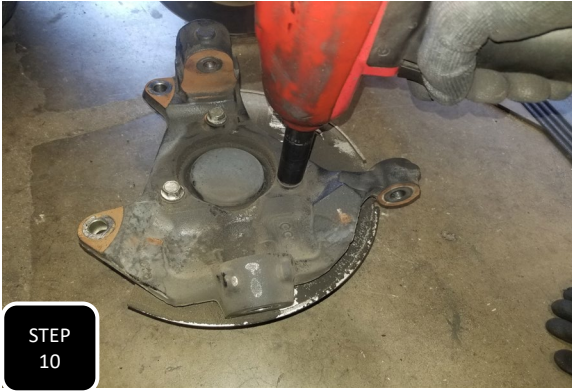
**Step 7** Unbolt the ABS sensor at the wheel bearing and hang it up, out of the way so that it does not get damaged during the install.



**Step 8** Loosen but do not remove the nuts for the upper and lower ball joints.



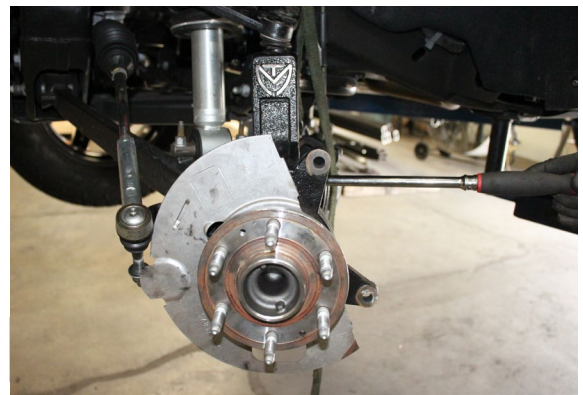
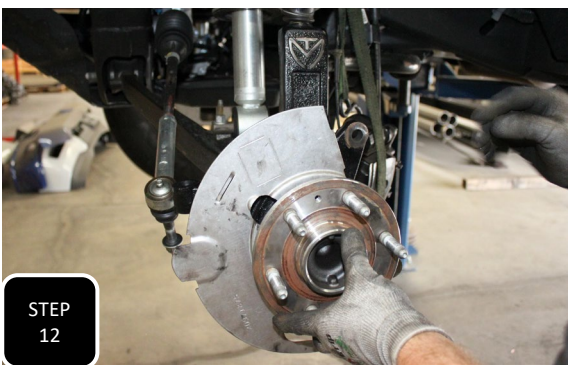
**Step 9** Break each ball joint loose by hitting the side of the spindle, right at the ball joint, with a hammer. The nut will catch the spindle, then remove both nuts and the spindle. **NOTE: NEVER HIT THE BALL JOINT ON THE THREADS.**



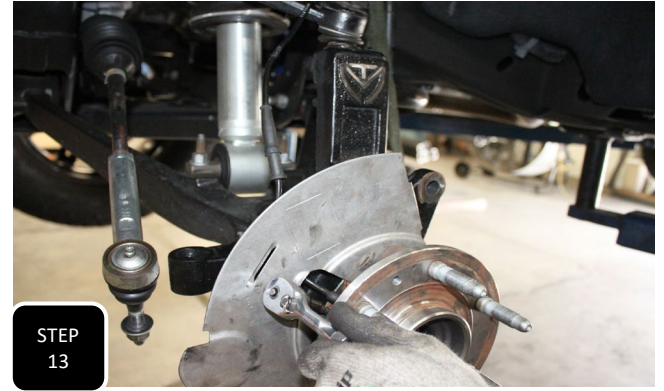
**Step 10** Remove the 3 bolts attaching the wheel bearing assembly to the spindle and separate. **NOTE: THE FACTORY DUST SHIELD WILL GET RE-USED.**



**Step 11** Attach the new spindle to the control arms using the factory nuts and tighten. **NOTE: IF YOU HAVE INSTALLED A STRUT SPACER THEN THE USE OF A FLOOR JACK TO COMPRESS THE SUSPENSION WILL HELP IN ATTACHING THE SPINDLE. IF THE TRUCK IS COMING OFF OF THE LIFT, LOWER THE TRUCK DOWN SO THAT THE REAR TIRES ARE TOUCHING THE GROUND.**



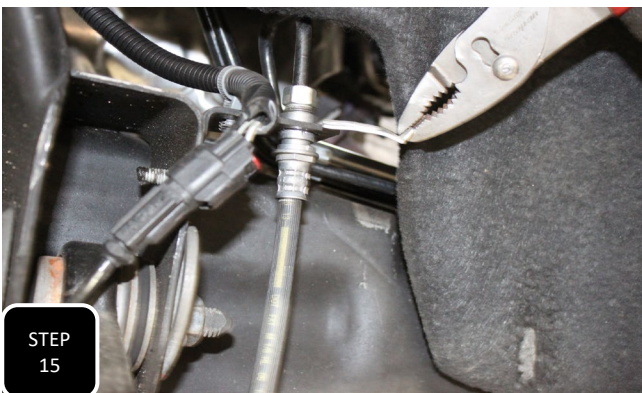
**Step 12** Using the factory bolts, install the wheel bearing along with the factory dust shield and tighten to factory specs.



**Step 13** Install the ABS sensor and attach it using the factory bolt.



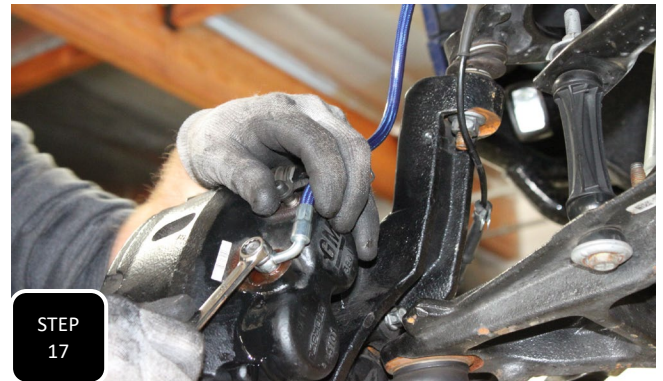
**Step 14** Slide the rotor onto the wheel studs and attach it to the hub using the factory retainer bolt.



**Step 15** Remove the clip that attaches the soft brake line to the frame and pull the hard line through the bracket to gain slack in the line. Next, install the brake caliper using the factory bolts and tighten to factory specs.



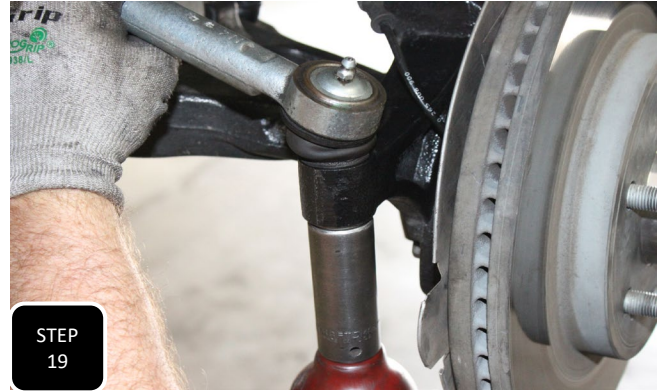
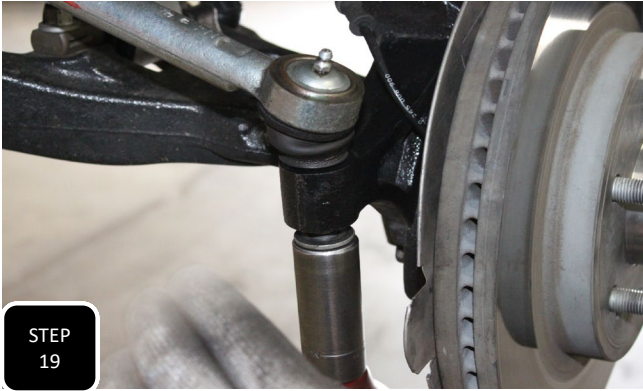
**Step 16** Using a line wrench and an open ended combo wrench, break loose the connection between the soft brake line and hard brake line, then unbolt the soft line from the brake caliper and remove the factory brake line.



**Step 17** Locate the new, extended brake line and attach it to the frame side first. Allow fluid to run through it and then attach the other end to the brake caliper using the new crush washers and the stock banjo bolt. **NOTE: MAKE SURE THAT CRUSH WASHERS DO NOT GET DOUBLED UP.**



**Step 18** Attach the ABS line and brake line to the neck of the spindle using the provided loom clamps and stock M6 bolt. Next, make sure the ABS line is safely guided near the pivot point of the upper control arm.



**Step 19** Attach the tie rod to the spindle using the factory nut and tighten to factory specs.

**Step 20** Re-peat steps 1-19 on the other side. Once done, both front brakes will need to be bled to ensure there is no air in the system.

**-Make sure to check the vehicle's toe before driving.**

**-The headlights should be adjusted after modifying the stance of the vehicle.**

**-The vehicle's alignment will need to be adjusted.**

**-All suspension components should be re-torqued after 500 miles.**



MAXTRAC SUSPENSION  
4522 E EISENHOWER CIR  
ANAHEIM, CA 92807  
714-630-0363

[WWW.MAXTRACSUSPENSION.COM](http://WWW.MAXTRACSUSPENSION.COM) [SALES@MAXTRACSUSPENSION.COM](mailto:SALES@MAXTRACSUSPENSION.COM)

### **831330 - 3" LEVELING KIT**

#### **PRODUCT:**

**2007-2018 GM 1500 PICKUP / SUV 2WD**  
**2007-2013 GM 1500 PICKUP / SUV 4WD**  
**2019+ GM 1500 PICKUP / SUV 2WD**

#### **PARTS LIST**

#### **QTY**

STRUT SPACER	2
10mm X 1.25 FLANGE NUT	8



PLEASE DOUBLE CHECK THE PARTS LIST BEFORE BEGINNING INSTALLATION, TO ENSURE ALL PARTS ARE PRESENT, IF THERE IS SOMETHING MISSING, PLEASE CONTACT MAXTRAC IMMEDIATELY 714-630-0363

READ THE INSTRUCTIONS THOROUGHLY AND COMPLETELY BEFORE BEGINNING THE INSTALLATION.

#### **PRIOR TO INSTALLATION:**

1. Factory service manual is recommended to have on hand.
2. Secure and properly block vehicle prior to beginning installation
3. Always wear safety glasses when using power tools or working under the vehicle
4. Modifications to any part will void the warranty associated with that product.

After removing parts from vehicle, save hardware for reinstallation

**IT IS RECOMMENDED THAT YOU HAVE YOUR VEHICLE'S ALIGNMENT CHECKED WHENEVER INSTALLING NEW SUSPENSION. IT IS ALSO RECOMMENDED THAT YOU ADJUST YOUR HEADLIGHTS WHENEVER YOUR VEHICLE'S RIDE HEIGHT IS ALTERED.**

## INSTALLATION INSTRUCTIONS - 831330

1. Jack up the front of the vehicle and support it using jack stands on the frame, allowing the suspension to droop out.
2. Remove the tire and unbolt the tie rod end at the spindle. Break the tie rod loose by hitting the side of the spindle with a hammer (Do not hit the tie rod on the threads)
3. Remove sway bar end link.
4. Loosen upper ball joint nut, but do not remove. Break the upper ball joint loose by hitting the side of the spindle with a hammer. The nut will catch the spindle, then remove nut and separate the ball joint from the spindle. (Do not hit the ball joint on the threads)
5. Remove the 2 bolts which holds the strut to the lower control arm, then with the top of the strut still attached, grab the bottom of the strut with a big adjustable wrench and rotate it 180 degrees. (this can also be achieved using a vise or a strut compressor)



6. Now remove the 3 nuts holding the top of the strut to the strut tower and remove the strut assembly.  
**NOTE: 2019+ MODELS WILL HAVE A BULKY, PLASTIC WIRE GUIDE THAT WILL NEED TO BE HELD OUT OF THE WAY TO ACCESS AND REMOVE THESE NUTS.**
7. Bolt the new strut spacer to the top of the strut assembly using the factory hardware.
8. The 3 studs at the top of the strut will need to be trimmed so that they are no longer than the top of the strut spacer.
9. Re-install the strut and reverse steps 1-6, then repeat on the other side of the vehicle.





**PART# 901050**

**2000-2020 GM SUV 2WD/4WD  
2000-2020 CADILLAC ESCALADE  
NON MAGNE/AUTO-RIDE**

**5" REAR LIFT KIT**



**3 HOUR INSTALL TIME**



**Recommended Tire size  
35x12.50**

**NOTE:** This kit requires drilling into the bump stop striker plates and the side of the factory trac bar bracket

Components	Hardware	Hardware Pack #
(2) 1650 COIL SPACER	(1) M14-2.0 X 100 HEX CAP SCREW	9010H-RTB
(1) 9010RTB TRAC BAR BRACKET	(1) M14-2.0 NYLOCK NUT	
(2) 9499RSB SWAY BAR END LINK	(2) M14 FLAT WASHER	
(2) 9010RBS BUMPS STOP EXTENSION	(2) 7/16-14 X 1 1/4" HEX CAP SCREW	
(2) 541505 SHOCK EXTENDER	(2) 7/16-14 NYLOCK NUT	
(1) 9010RB-1 BRAKE LINE BRACKET	(4) 7/16" FLAT WASHER	9010H-RSB
(1) 9010ABS-1D ABS LINE BRACKET	(2) M12-1.75 X 65 HEX CAP SCREW	
(1) 9010ABS-1P ABS LINE BRACKET	(2) M12-1.75 NYLOCK NUT	
(1) 9010RE-1 E-BRAKE BRACKET	(4) M12 FLAT WASHER	9010H-SE
	(2) M14-2.0 X 80	
	(2) M14-2.0 NYLOCK NUT	
	(4) M14 FLAT WASHER	9010H-RBS
	(2) 7/16-14 NYLOCK NUT	
	(2) 7/16" FLAT WASHER	9010H-BL
	(2) M8-1.25 X 20 HEX CAP SCREW	
	(2) M8-1.25 NYLOCK NUT	
	(4) M8 FLAT WASHER	

**Please double check the parts list before beginning installation to ensure all parts are present. If there is something missing, please contact Maxtrac Suspension (714) 630-0363. Please have the boxes present if parts are missing or damaged**

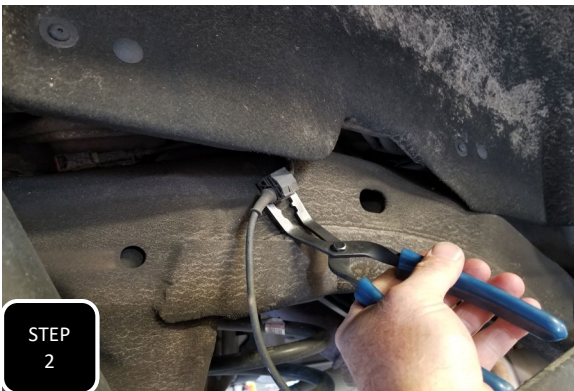
**PRIOR TO INSTALLATION:**

- 1. Factory service manual is recommended to have on hand.**
- 2. Secure and properly block vehicle prior to beginning installation.**
- 3. Always wear safety glasses when using power tools or working under the vehicle**
- 4 Modification to any part will void the warranty associated with that product**

AFTER REMOVING PARTS FROM VEHICLE, SAVE HARDWARE FOR REINSTALLATION



**Step 1** Jack up the rear of the truck and support under the frame rails with jack stands. Keep an adjustable jack under the diff for height adjustment.



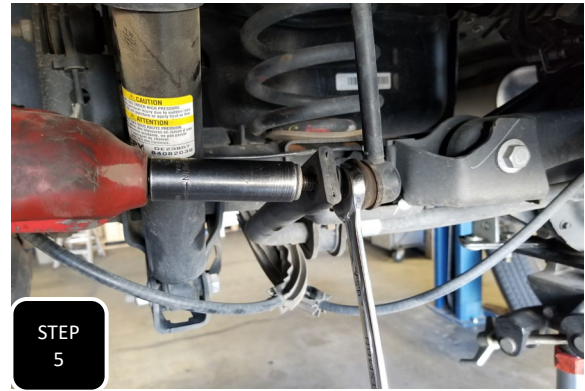
**Step 2** Separate the ABS guide clip, on each side, from the frame to allow for more slack during the install.



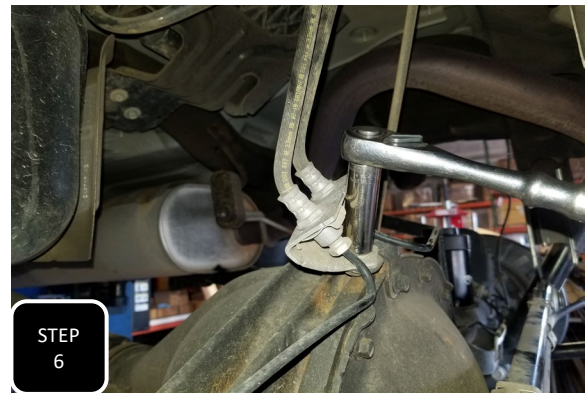
**Step 3** Unclip the ABS line guide clips from the back side of the upper control arm mounts on both sides.



**Step 4** First, apply pressure to the diff with the adjustable jack. Next, to access the upper shock mount more easily, cut a slit in the wheel well liner and remove the upper mounting bolt of the shock.



**Step 5** Unbolt both sway bar end links at both ends and remove.



**Step 6** Unbolt the brakeline bracket from on top of the diff to allow for more slack when installing the coil spacers.



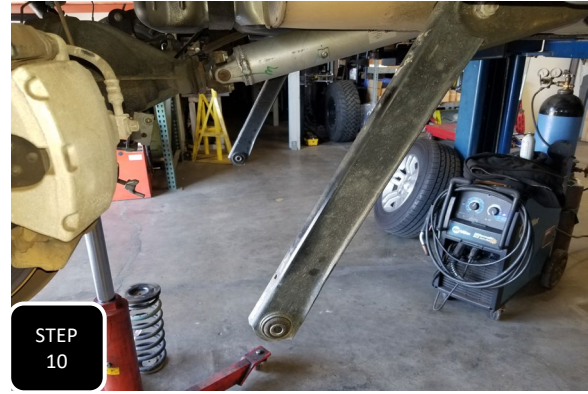
**Step 7** Locate the E-brake cable guide brackets on the frame in the passenger side wheel well and at the driver's side lower control arm mount on the axle. Unbolt both and completely remove the pass side bracket from E-brake cable.



**Step 8** Lower down the axle and remove both coil springs. **NOTE: MAKE SURE TO SAVE THE RUBBER ISOLATORS FOR RE-INSTALLATION.**



**Step 9** Unbolt the trac bar from the mount on the frame and separate.



**Step 10** Make sure the adjustable jack under the diff has a provision to keep the diff from rotating, then unbolt both lower link arms from the axle, loosen the bolts at the frame, and allow them to both drop down, away from the axle. **NOTE: IF THE PINION IS NOT SUPPORTED, THE DIFF WILL WANT TO ROTATE DOWN.**



**Step 11** Locate the bump stop striker pads on the axle, then measure and mark an "X" 2 1/8" straight forward from the existing hole in the plate. Next, drill a 1/2" hole through your mark. **NOTE: CHECK THE FACTORY HOLE FOR WELD SLAG. IT MAY NEED TO BE CLEANED OUT TO ACCEPT A BOLT.**



**Step 12** Install the provided bump stop extension and secure it by installing the provided 7/16" nut and washer on the most forward bolt and tighten. The further back bolt is just a guide. **NOTE: THIS AREA IS ONLY ACCESSABLE WHILE THE LOWER CONTROL ARM IS REMOVED FROM THE BRACKET ON THE AXLE.**



**Step 13** Locate the coil spacers and loosely install them along with the factory coils and isolators. Once both are in place, jack up the axle to apply pressure to the coils and assure that they are properly seated.



**Step 14** Loosely re-attach the lower control arm to the axle and only snug up the nuts. **NOTE: THESE BOLTS WILL GET FULLY TIGHTENED WHEN THE TRUCK IS BACK ON THE GROUND AT RIDE HEIGHT.**



**Step 15** Loosely install the provided shock extenders with the logo facing outward, using the factory shock bolt. Next, attach the shock to the extender using the provided 14mm bolt, nut and washer and fully tighten both bolts. **NOTE: ON THE DRIVER'S SIDE, YOU WILL ATTACH THE PROVIDED ABS LINE BRACKET TO THE SHOCK MOUNTING BOLT AT**



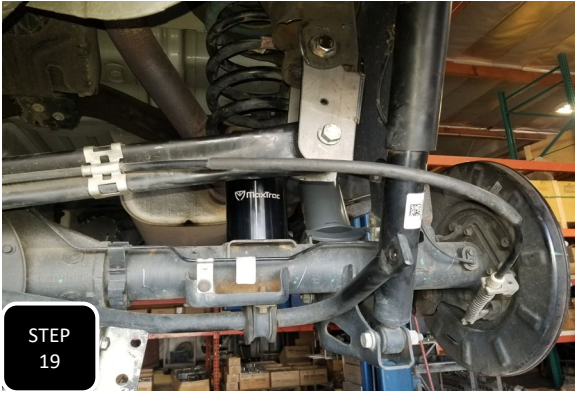
**Step 16** Loosely install the provided trac bar bracket onto the factory trac bar bracket on the passenger side frame using the provided 14mm bolt and zinc plated crush tube. The rearward facing ear of the provided bracket will install "inside" the factory bracket and the forward facing ear will install on the "outside" of the factory bracket.



**Step 17** Using a scribe, trace the upper, side hole of the trac bar bracket, then remove the bracket and drill a 1/2" hole through your circle.



**Step 18** Re-install the bracket using the provided zinc plated crush tube and 14mm hardware. Next, install the provided 7/16" bolts, nuts, and washers through the two side holes. You will also be attaching the provided pass side ABS line bracket to the upper bolt with the "D" shaped hole facing upward, then tighten all 3 bolts.

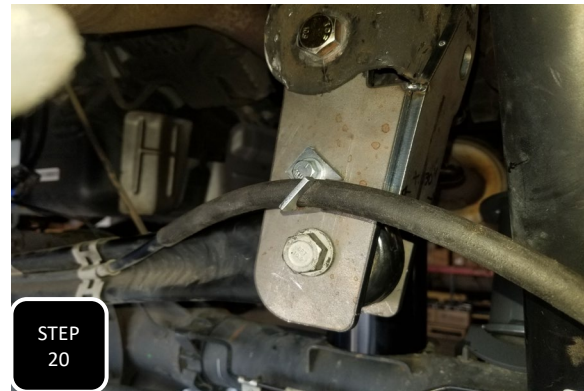


STEP  
19

**Step 19** Loosely attach the trac bar to the new drop down bracket using the factory bolt and nut. **NOTE: DO NOT FULLY TIGHTEN THIS BOLT UNTIL THE TRUCK IS BACK ON THE GROUND AT RIDE HEIGHT.**



STEP  
20



STEP  
20

**Step 20** Slide the E-brake guide bracket onto the E-brake cable near the trac bar bracket on the passenger side and then attach this bracket to the small hole on the back of the trac bar bracket using the provided 8mm bolt nut and washers. **NOTE: DO NOT FULLY TIGHTEN THIS BRACKET. ONLY SNUG IT UP AS IT WILL NEED TO PIVOT AS THE SUSPENSION CYCLES.**



STEP  
21



STEP  
21

**Step 21** Remove the "O" ring that is on the factory mounting bolt for the brake line bracket at the top of the diff. Next, attach the provided brake line bracket to the top of the diff using this bolt and tighten.



**Step 22** Gently bend the hard brakelines until the factory mounting bracket is vertical and the soft brakelines are pointed straight up. Next, attach the factory brakeline bracket to the provided brakeline bracket using the provided 8mm bolt, nut, and washers.



**Step 23** Install the new, longer sway bar end links using the factory bolt at the frame and the provided 12mm bolt at the sway bar, then tighten.

**Step 24** Re-install the wheels and tires then lower the truck to the ground. Jump on the rear bumper a few times to settle the suspension and then tighten all of the control arm/ trac bar bolts that were left loose to factory specs. Next, re-attach the E-brake cable guide bracket to the driver's side lower control arm and tighten.

## AFTER MODIFYING YOUR SUSPENSION

HAVE THE VEHICLE'S ALIGNMENT CHECKED

PROPERLY ADJUST YOUR HEAD LIGHTS FOR THE NEW STANCE OF THE SUSPENSION

RE-TORQUE ALL BOLTS AFTER 500 MILES



**MaxTrac**  
s u s p e n s i o n

## RIDE HEIGHT SHEET

\*THIS SHEET MUST BE FILLED OUT PRIOR TO CALLING WITH ANY DISCREPENCIES

YEAR \_\_\_\_\_ MAKE \_\_\_\_\_ MODEL \_\_\_\_\_

4WD / 2WD / AWD

### MEASUREMENTS

\*MOST ACCURATE MEASUREMENT IS FROM THE BOTTOM OF THE RIM, STRAIGHT UP TO THE BOTTOM OF THE FENDER

\*TRUE HEIGHT WONT BE ACCURATE UNTIL VEHICAL IS ALIGNED

\*THE VEHICLE'S CASTER WILL BE INCREASED OR DECREASED IF ONLY THE FRONT OF THE VEHICLE IS MODIFIED

	BEFORE	AFTER	DIFFERENCE
DRIVER FRONT	_____	_____	_____
DRIVER REAR	_____	_____	_____
PASSENGER FRONT	_____	_____	_____
PASSENGER REAR	_____	_____	_____

# LIMITED LIFETIME WARRANTY

Max Trac Suspension, Inc. warrants that the product, when properly installed and used, is free from defects in workmanship and materials for a period of twelve (12) months from the date of purchase. This warranty is void if (1) the vehicle is not aligned after kit installation, (2) proper maintenance is not routinely performed, (3) the Max Trac products are misused or abused in any way in either installation or service, or (4) the products are used in a way that violates federal, state, or local law or regulation in any respect. Max Trac is not responsible for vehicle compatibility with other aftermarket products. Warranty coverage does not include consumer opinions regarding ride comfort, fitment and design after product installation. Max Trac reserves the right to change, modify or cancel this warranty without prior notice.

Our limited lifetime warranty excludes the following items: bushings, bump stops, ball joints, tie rod ends, rod end/heim joints, and shock absorbers. These parts are subject to immediate wear and tear and are not considered defective when worn. They are warranted for twelve (12) months from the date of purchase only for defects in workmanship.

This Max Trac warranty is void if (1) the vehicle is not aligned after kit installation, (2) proper maintenance is not routinely performed, (3) the Max Trac products are misused or abused in any way in either installation or service, or (4) the products are used in a way that violates federal, state, or local law or regulation in any respect. Max Trac is not responsible for vehicle compatibility with other aftermarket products. Warranty coverage does not include consumer opinions regarding ride comfort, fitment and design after product installation.

Max Trac reserves the right to change, modify or cancel this warranty without prior notice.

## **WARRANTY RETURN**

Contact Maxtrac by sending an email with a copy of the original purchase receipt, along with photographs clearly illustrating the failure mode.

1. Upon validating the information provided, Maxtrac will issue a Return Manufacturer Authorization number (RMA#).
2. Return your product to Max Trac Suspension at your expense in order to execute a claim under this warranty.
3. Include the RMA# on the outside of the box. Any returns without the RMA# will be refused.

## **NON-WARRANTY RETURN CREDIT POLICY**

Your item must be in its original unused and resalable condition to be returned, unless there is a manufacturing defect. You must return the item within 30 days of your purchase. Otherwise, there will be an additional restocking fee.

1. Please contact Max Trac Suspension at (844) 535-1668 to obtain a Return Manufacturer Authorization Number (RMA#).
2. Return your product to Max Trac Suspension at your expense.
3. Include the RMA# on the outside of the box. Any returns without the RMA# will be refused.

## **Return Eligibility**

Merchandise that has been installed, used, or altered may be subject to no credit.

## **Restocking Fee**

All items are subject to a restocking fee based on the condition of the packaging and product.

Max Trac Suspension does not credit shipping and handling. Credit minus applicable restocking fee will be determined and issued within 10 business days of product receipt.

All returns will be credited to your Maxtrac account.



# INSTALLATION WARNINGS

**READ INSTRUCTIONS AND WARNINGS COMPLETELY PRIOR TO INSTALLATION.**

**MAXTRAC IS NOT RESPONSIBLE FOR ANY DAMAGE OR INJURY DUE TO IMPROPER INSTALLATION OR MAINTENANCE.**

Installer is responsible to insure a safe and controllable vehicle after performing modifications. All steps and procedures described in these instructions were performed while the vehicle was properly supported on a two post vehicle lift with safety jacks. Included instructions are recommended guidelines only.

Max Trac Suspension recommends reference to the OE Service Manual corresponding to the model and year of vehicle when either disassembling or assembling factory and related components.

Use caution during all disassembly and assembly steps to insure suspension components are not over extended, causing damage to any vehicle components and parts included in this kit. Unless otherwise specified, tighten all bolts and fasteners to standard torque specifications listed within the OE Service Manual.

Suspension components that use rubber or urethane bushings should be tightened with the vehicle at normal ride height. This will prevent premature wear or failure of the bushing and maintain ride comfort.

Larger tire and wheel combinations may increase leverage on suspension, steering, and related components.

Due to payload options and initial ride height variances, the amount of lift is a base figure. Final ride height dimensions may vary in accordance to original vehicle ride height. Always measure the vehicle ride height prior to beginning of installation.

**MAXTRAC SUSPENSION DOES NOT ADVISE USING WHEELS WIDER THAN 9" OR WHEELS WITH LESS THAN 4.5" BACKSPACING. DOING SO WILL RESULT IN VOIDING ANY AND ALL MANUFACTURER WARRANTIES**

Max Trac Suspension does not recommend the combined use of suspension lifts, body lifts, or other lifting devices.

## **Fin C e s A d s t e n t s**

Once the vehicle is lowered to the ground, check all parts which have rubber or urethane components to ensure proper torque. Torque lug nuts to the wheel manufacturer specs.

Move vehicle backwards and forwards a short distance to allow suspension components to settle. Turn the front wheels completely left then right and verify adequate tire, wheel, brake line, and ABS wire clearance.

Test and inspect steering, brake and suspension components for tightness and proper operation. Inspect brakes, hoses, and ABS lines for adequate slack at full extension, and adjust as necessary.



# ADDITIONAL WARNINGS

## **WARNING**

Max Trac Suspension products should ONLY be installed by a certified professional mechanic with experience working on and installing suspension products. Professional knowledge and skill will typically yield the best installation results.

If you need a list of installers in your area, please contact Max Trac Suspension customer service to find one of our authorized dealers. Max Trac Suspension does not warrant work performed by any dealer, installer, or mechanic.

- All lifted vehicles may require additional driveline modifications and/or balancing.
- A Factory Service Manual for your specific Year/ Make / Model should be referenced during installation.
- Use of a vehicle hoist will greatly reduce installation time.
- Speedometer / computer calibration is required if changing /- from factory tire diameter.
- Vehicle must be in excellent operating condition. Repair or replace any and all worn or damaged components prior to installation.

**FAILURE TO PERFORM POST INSTALLATION INSPECTION AND/OR CHECKS MAY RESULT IN VEHICLE COMPONENT DAMAGE AND/OR PERSONAL INJURY OR DEATH.**

**RECHECK ALL HARDWARE FOR PROPER TORQUE VALUES AFTER 500 MILES, AND THEN PERIODICALLY AT EACH SERVICE INTERVAL THERAFTER.**

## **Vehicle Handling Warning**

Increasing the height of your vehicle raises the center of gravity and **WILL** affect stability and control. Use caution on turns and when steering. Vehicles with larger tires and wheels will handle differently than stock vehicles. Take time to familiarize yourself with the handling of your vehicle after product installation.

## **Wheel Alignment/Headlight Adjustment**

It is necessary after installation to have a wheel alignment performed by a certified alignment technician. Align the vehicle to factory specifications. It is recommended that your vehicle alignment be checked after any off-road driving. In addition to vehicle alignment, it is necessary to check and adjust vehicle head lamps for proper aim and alignment. If the vehicle is equipped with active or passive safety/collision monitoring and / or avoidance systems including, but not limited to, camera-or radar-based systems, check and adjust your vehicle's systems for proper aim and function.

## **Braking Warning**

Generally, braking performance and capabilities are decreased when significantly larger or heavier tires and wheels are used. Take this into consideration while driving. Also, changing axle gear ratios or using tires that are taller or shorter than factory height will cause an erroneous speedometer reading. On vehicles equipped with an electronic speedometer, the speed signal impacts other important functions as well. Speedometer recalibration for both mechanical and electronic types is highly recommended.



# SAFETY WARNINGS

## SAFETY WARNING

MISUSE OF THIS PRODUCT COULD LEAD TO INJURY OR DEATH.

- Suspension systems or components that enhance the on and off-road performance of your vehicle may cause it to handle differently than it did from the factory. EXTREME CARE must be used to prevent loss of control or vehicle rollover during operation.
- ALWAYS operate your vehicle at reduced speeds and maintain distance between vehicles and obstacles to ensure your ability to control your vehicle under all driving conditions. Failure to drive safely may result in serious injury or death to the driver and passengers.
- Driver and passengers must ALWAYS wear seat belts, avoid rapid steering angles and rates and other sudden maneuvers.
- You should NEVER operate your vehicle under the influence of alcohol or drugs.
- Please check all factory components for excessive wear and tear. Please replace worn factory parts before installing any suspension kits. Failure to do so will void any Max Trac warranty.
- Please inspect all wheel bearings and hub bearings for excessive wear and replace worn components before installing suspension kits. These hub and wheel bearings may wear out sooner with installation of larger tires and wheels. MaxTrac does not warranty these factory parts at any time, also using any wheel that MaxTrac does not recommend will void any warranty of MaxTrac components.
- Constant maintenance is required to keep your vehicle safe. Thoroughly inspect your vehicle before and after every off-road use.
- It is the responsibility of the retailer and/or the installer to review all state and local laws with the end user of this product related to bumper height laws and the lifting of a vehicle before the purchase and installation of any Max Trac products.
- It is the responsibility of the driver to check the area around the vehicle for obstructions, people, and animals before moving the vehicle.
- All lifted vehicles have increased blind spots. Take note of these prior to operating the vehicle.

**DAMAGE, INJURY AND/OR DEATH CAN OCCUR IF ANY OF THE ABOVE WARNINGS ARE NOT FOLLOWED.**