



baja designs.
The Scientists of Lighting

44-7872 GMC, (20-23), 2500 & 3500 20" S8 Bumper Kit



2950 Norman Strasse Rd • San Marcos • CA • 92069

Phone 760-560-2252 • Fax 760-560-0383

info@bajadesigns.com • www.bajadesigns.com



baja designs®
The Scientists of Lighting

LIMITED LIFETIME WARRANTY

Baja Designs proudly offers a LIFETIME WARRANTY against manufacturer's defect on all the products that we manufacture. These are comprehensive warranties; other than the exclusions below – you're covered. If your LED or HID bulb burns out, you're covered. Additionally, cutting off our connector or changing your lenses does not automatically void your warranty.

Exclusions:

Installation errors, abuse, misuse or crash damage. You must be the original owner of the product and can supply proof of purchase.

Baja Designs manufactures its own products as well as resells products manufactured by others. Baja Designs makes no express or implied warranties on products not manufactured by Baja Designs including without limitation any warranties or merchantability and fitness for a purpose. We will, however, pass on all warranties made by the manufacturer, who has sole responsibility for performing such warranties.

Baja Designs will pay the freight if your product is less than 90 days old, otherwise defective products must be returned to Baja Designs, Inc., freight prepaid. At our option, we will repair or replace items in question and return them at no charge. If the identical product is no longer available, we will replace with a similar product of equal value. Baja Designs Inc. will not be responsible for any indirect or consequential damages in connection with defective merchandise.

Items purchased through a Baja Designs authorized dealer must be returned through the dealer. Only available on LED auxiliary lights and product must be in sellable condition at MSRP. Product that has been damaged in any way after the original purchase date will be excluded from this guarantee.

Indemnification:

Buyer hereby acknowledges off-roading, racing and driving at night are dangerous activities and that the products and/or supplies purchased from Baja Designs are used in an inherently dangerous activity that may endanger life and limb; and in no event shall the seller, or seller's heirs and assigns, be held liable for consequential damages, nor shall seller's liability on any claim for damages arising out of or connected with the sale, delivery, or use of purchased products and/or supplies exceed the purchase price of the products and/or supplies. Buyer is responsible for ensuring that it uses the products (and its vehicle) in accordance with all applicable laws, regulations, guidelines, and standards of care. Buyer acknowledges that some products may only be used when off-roading, and Buyer will comply with all vehicle and road safety guidelines. Buyer is solely responsible for (and will indemnify and hold Bestop harmless for) any claims, losses, damages, fines, fees, costs, or other amounts arising out of Buyer's non-compliance with these provisions.

****For a color copy of instructions, visit your vehicle specific application on BajaDesigns.com ****

Tools Required

* Trim Removal Tool Or Flat Head Screw Driver

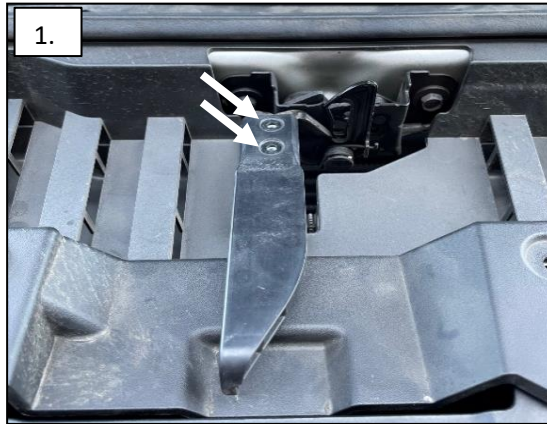
* Zip Tie Cutters

* T-15 Torx Bit

* 7/16", 9/16" wrench

* 7mm, 10mm, 7/16", 9/16" socket

1. Using a T-15 Torx Bit, remove the 2x fasteners securing the hood latch handle.



2. Using a trim removal tool or flat head screw driver, remove the 10x push pins securing the top radiator shroud.



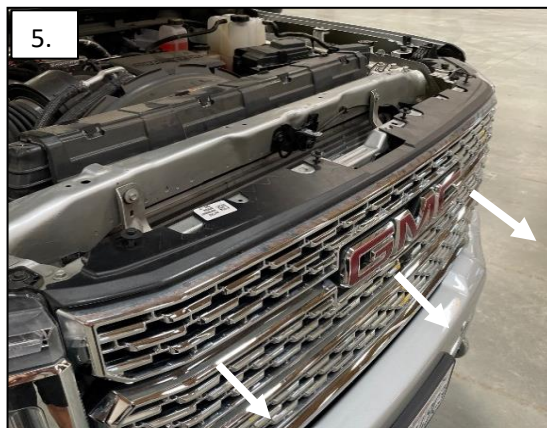
3. Using a 10mm socket, remove the 4x fasteners securing the top of the grille.



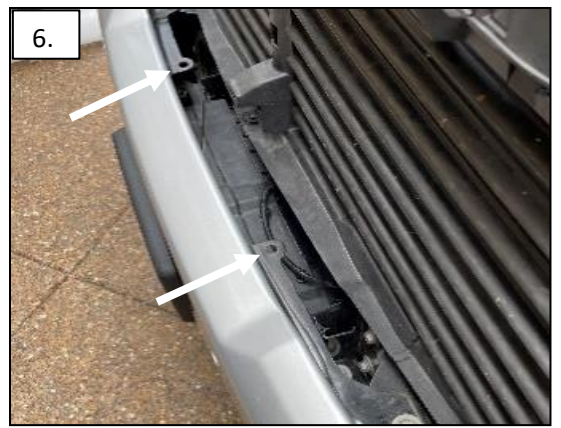
4. Gently pull on the bumper cover's to release the self locking tabs. Look behind the cover to see a second locking tab on the side. Using needle nose pliers, collapse the locking tab to release the bumper cover further. This will help with re-installing the grille.



5. Gently pull on the grill in the areas shown to release the self locking tabs. Before removing the grill completely, un-plug the front facing camera (if-equipped).



6. Find the two unused mounting locations placed on the bumper.



7. Mount the 2x brackets with the supplied hardware onto the bumper. Use EPDM rubber on brackets if



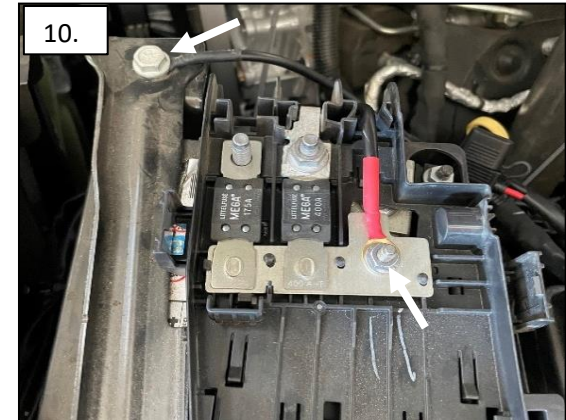
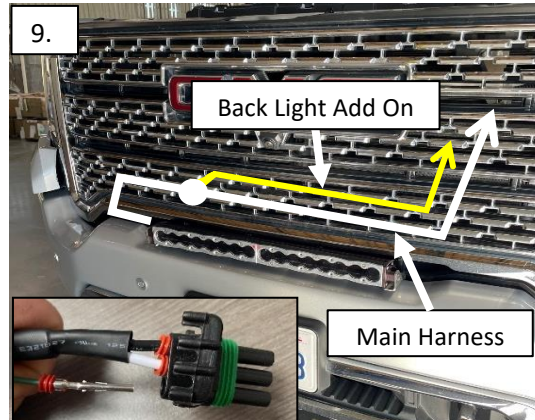
Use EPDM rubber on brackets if needed. Place the light bar between the brackets. Slide the brackets to the mounting tabs on the light bar. Using a 7/16" wrench, lightly tighten the light. Center the light to the vehicle, finalize torquing down the brackets.

8. Remove the light from step 7. Re-mount the grille.



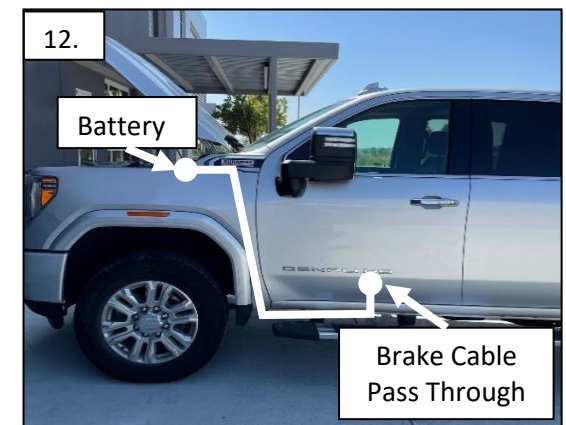
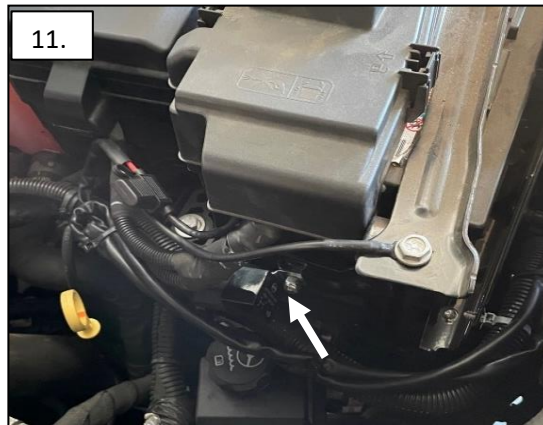
9. Re-mount the light. Plug the light bar into the main harness. If the back lighting feature is desired, plug in the back light add on harness into slot C in the connector.

10. Route the main harness and back light add-on harness to the battery. Using a 10mm socket, mount the 3/8" Red wire ring terminal to the battery. Using a 13mm socket, mount the 3/8" black ring terminal to the battery cradle.



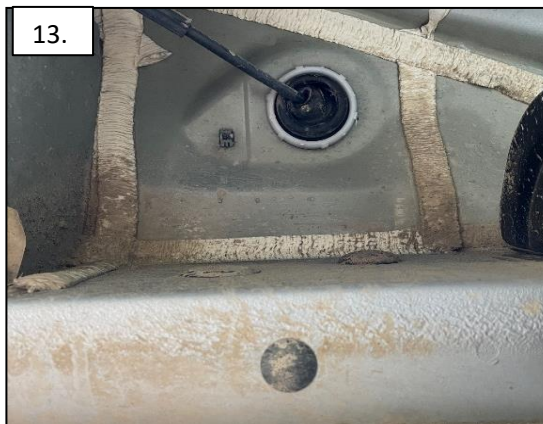
11. Located on the side of the battery cradle is a flange with a 1/4" hole. Using a 7/16" wrench and socket, use the supplied hardware to mount the relay.

12. Route the switch lead from the battery down the inside of the fender to the center of the driver floor board. Leave the back light add-on harness next to the battery for now.



13. On the bottom of the floor is the brake cable pass through, Route the switch lead through it to the inside of the cab.

14. Begin removing the plastic trim by pulling up on the self locking tabs. Remove the fuse box cover inside the cab.



16. Once the trim is removed, pull up on the carpet to show the brake cable

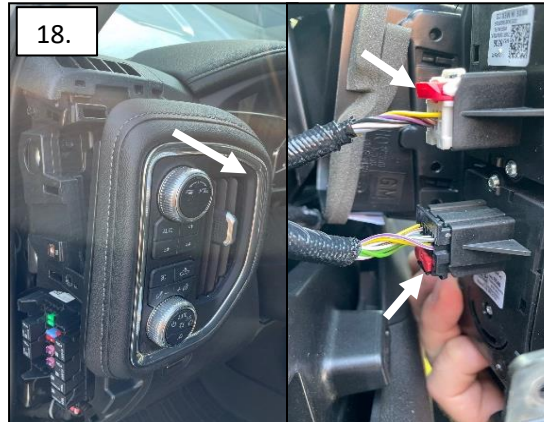


routing to the dash. Route the switch lead with the brake cable.

17. To allow more access for mounting the switch, begin removing the dash using a T15 torx bit on the two fasteners shown.



18. Pull on top of the panel to release the self locking tabs. On the back side of the panel, remove the two connectors by pulling on the red tab and pressing down on the release tab.



19. Using a 7mm socket, remove the 2x fasteners securing the dash.



20. Pull up on the gauge cluster cover releasing the self locking tabs. Using a 7mm socket, remove the 3x fasteners on the gauge cluster cover.



21. Pull on the cluster showing the last fastener on the lower dash panel. Using a 7mm socket, remove the fastener.



22. Pull on the panel giving full access to the back of the panel.



23. On the face of the panel, mark the location desired for the switch. Drill a 3/4" hole and mount the switch through.

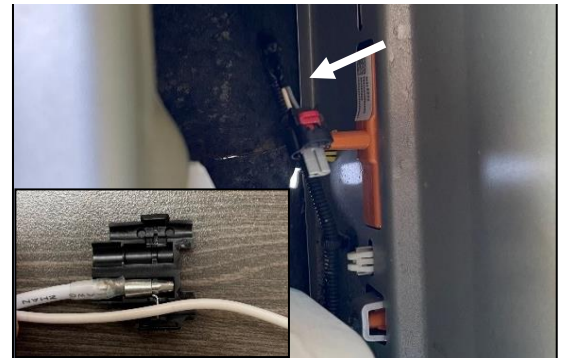


24. To finish installing the Back Light Add-On feature, locate the Fender Backlight on the driver side.



Running light on the drive side.
Behind the fender is the connector.

22. Un-Plug the connector, separate the white power wire. Place the clasp connector over the power wire and use pliers to force shut. This will turn on your light bars back lighting every time the running lights are switched on.



Tie all wires away from sharp, hot, and/or rotating components.
Re-torque all the fasteners after 100 miles.
Your install is now complete! Thank you for choosing Baja Designs.