



Sku: 2K780100
2K780101
2K780102

- 1.It is important to read all instructions from start to finish before installation.*
- 2.The suspension and tires could end up damaged if these instructions are not adhered to properly.*
- 3.The parts in this kit are pre-greased at shipment, do not over grease!*
- 4.A professional front end alignment will be required after installation is complete!*
- 5.Note: Trucks with lift kits or modified suspension may find it necessary to shorten tie rod bodies to complete vehicle alignment within specification.*
- 6.Vehicles with oversized tires should check ball joints, pitman and idler arms every 2500 to 5000 mile for excessive wear, replace as needed.*

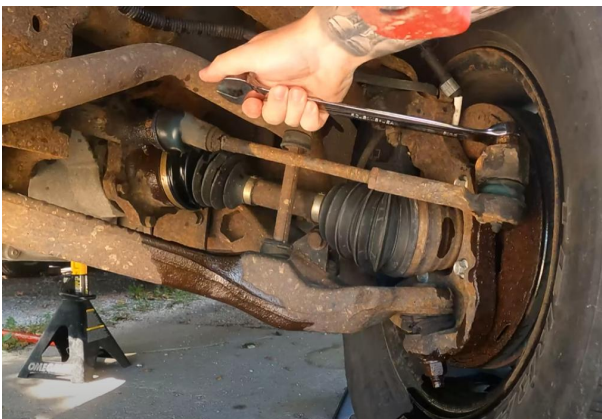
Instructions

1.To begin installation, block the rear tires of the vehicle so that the vehicle is stable and can't roll backwards. Use a vehicle jack to lift the front end of the truck off the ground. Let the front suspension drop enough to remove both front wheels. Place 2 jack stands under front section of frame. Make sure vehicle is properly supported by stands before removing the jack. Never work under an improperly supported vehicle. Please stop and consult a professional if you are unsure about the situation!



2. Remove the outer tie rod nut from the spindle. Use a large hammer, strike the outer joint upwards to free from the spindle. Take care not to hit the brake rotor and only the outer shaft.

3. Locate the inner tie rod where it connects to the center link. Use a large crescent wrench remove disconnect the inner rod end from the center link, and then remove the entire tie rod assembly from the truck as one piece.



Tips: Use a clean rag and degreaser clean all grease and debris out from the threads on the center link ends.

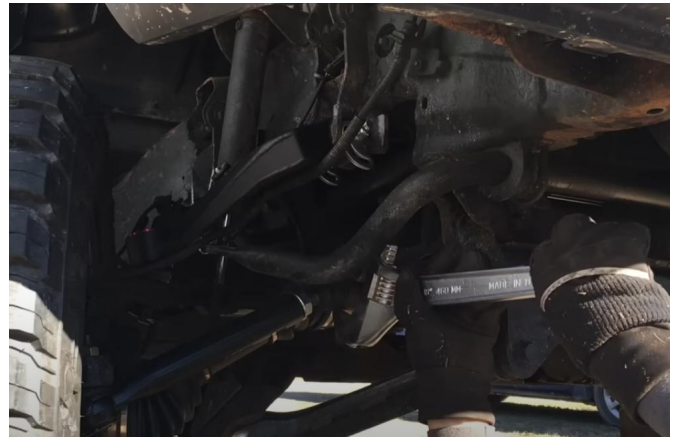
3. With the tie rod assemblies removed from the truck, measure and write down the overall length of both the driver and passenger side tie rod assemblies.

Adjust the new tie rod assemblies to the same overall length as you previously recorded.

When adjusting new tie rods, try to center the hex shaft, so there are equal threads on the inner and outer sides for maximum strength.



5. You can now begin reassembly using high strength loctite. Thread the inner rods into the center link. Using a 2 inch open end wrench or large crescent wrench, tighten to 100 ft.lbs.



6. Slide the outer rod shaft into the factory spindle and thread the nut. Tighten the outer rod nut to 48 ft.lbs.



7. Finally, get to an alignment professional as soon as possible to align the truck to factory specification, as to avoid premature tire wear and possible steering and suspension wear or damage.

Thank you for the purchases!

It is our honor to help you. So please write us about what you think and what you need. We will reply you ASAP and try our overwhelming best to help you solve the problem. Please feel free to contact us via Ebay message or Amazon tools.

E-Mail: speed@nbgoldenlion.com

Amazon:

1. Visit www.amazon.com/your-orders
2. Find your product
3. Click on "contact seller"
4. Include your order #

eBay:

1. Visit www.ebay.com
2. Click on "My eBay"
3. Find your product
4. Click on "More actions"
5. Click on "Contact seller"