

BOOST AUTO PARTS

**2019+ GM Silverado and Sierra
Tow Mirror Marker Light Installation**





2019+ GM Tow Mirror Marker Light Installation

INTRODUCTION

This document will be covering the installation of [2019+ GM Silverado and Sierra Tow Mirror Marker Lights](#). This install will take 20 minutes per side and only requires basic hand tools.

These are drop in replacement mirror marker lights for the 2019+ new style GM tow mirrors. These 2019+ style tow mirror lights fit 2019+ Silverado and Sierra tow mirrors. These are plug and play with OEM tow mirrors as long as the lights were properly working prior to installation.

These are offered in a selection of lighting options including: bright Amber or White LED's, optional forward facing spotlights, and optional scanning sequential front running light. As well as providing two lens options: either clear lens or smoked lens.

Boost Auto Parts offers other parts and accessories for 2019+ New Body Style GM Trucks. To purchase additional parts and accessories for your truck [Click Here](#).

TABLE OF CONTENTS

Overview	Pg.3
Removing Upper and Lower Glass	Pg.4
Replacing Marker Light	Pg.9
Installing Upper and Lower Glass	Pg.25

How to Remove and Replace Tow Mirror Marker Lights on 2019+ Silverado and Sierra GM Trucks

For OEM Tow Mirrors

Difficulty: Moderate

Tools Needed: A T15 socket or bit, & an impact driver or ratchet

Parts Needed: [2019+ GM Silverado and Sierra Tow Mirror Marker Lights.](#)

Video Tutorial: [2019+ GM Tow Mirror Marker Light Install](#)



Caution:

Safety glasses must be worn while performing this procedure!

Removing Upper and Lower Glass

Step 1:

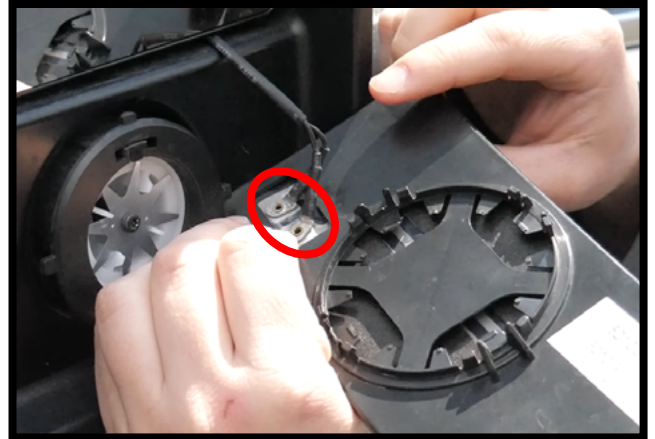
Angle the upper and lower glass down as far as they go. Snap the lower glass off by placing fingers behind the lower glass and pulling away from the mirror.



Step 2:

If you have previously purchased the Boost Auto Parts heated lower glass kit, disconnect the defrost terminals.

If you do not have this upgrade kit installed, this would be a good time to do so, as you will be removing the upper and lower glass. Purchase our heated lower glass upgrade kit [here](#).



Step 3:

Angle the upper glass all the way up. Then reach behind it and snap off the glass by applying even pressure and pulling it away from the mirror.

**Step 4:**

If you have previously purchased the Boost Auto Parts signal on glass upgrade kit, be sure to unplug the signal on glass wire from the back of the upper glass.

If you do not have this upgrade kit installed, this would be a good time to do so, as you will be removing the upper and lower glass. Purchase our signal on glass upgrade kit [here](#).

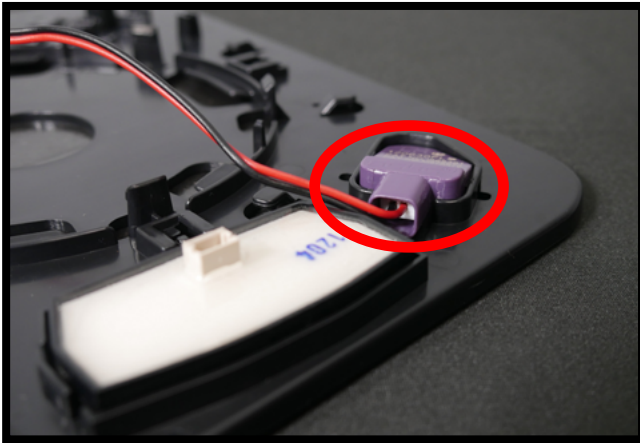


Step 5:

Disconnect the wires for the upper defrost.

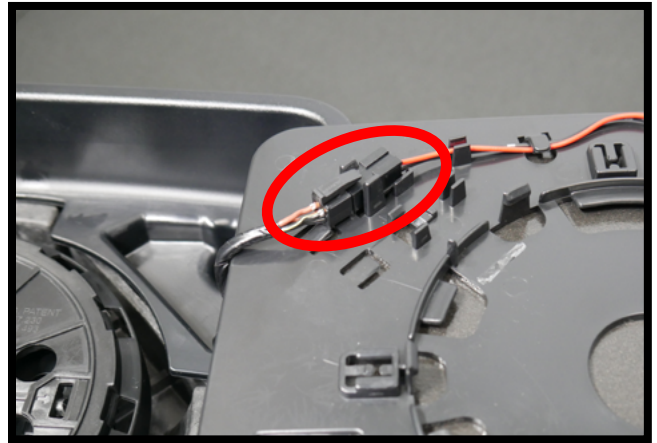


Step 6: This step has two different variations based on what options your vehicle is equipped with.



Mirrors With Blind Spot Only

If your mirrors are only equipped with blind spot monitoring, remove the two pin the connector into the back of the blind spot indicator.



Mirrors With Auto Dim

If your mirrors are equipped with auto dim, disconnect the harness to the four pin connector on the backside of the upper glass.



Disclaimer: If the back of your upper glass looks like this, you have snapped the mount off of the motor, refer to the steps below for further instruction.

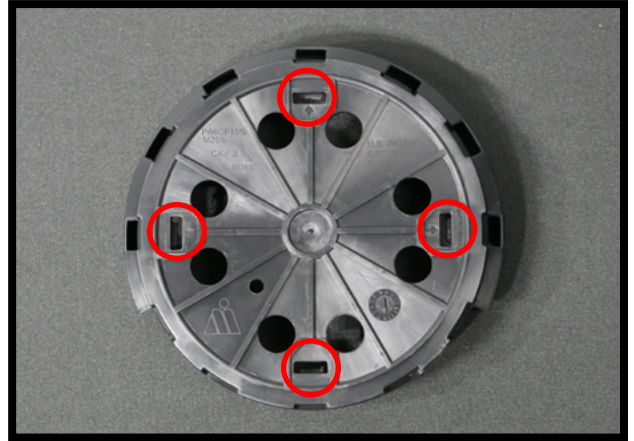
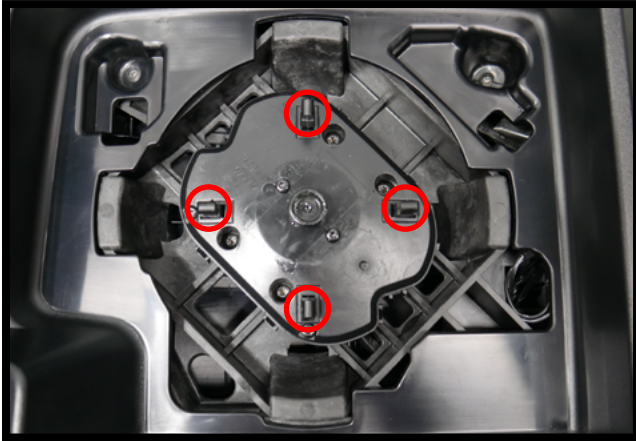
If your upper glass does not look like this refer to [Pg.9](#) for further instruction.



Step 1:

Use a flat head screwdriver to remove the mount from the back of the glass. Do not discard the mount.



**Step 2:**

Line up the tabs on the mount to the tabs on the motor (shown above). Make sure the text is oriented in the correct direction to ensure proper motor function.

Using your palm, press down evenly on the center of the mount to snap it into place.

Once the center of the mount is snapped in, press on each tab to make sure the mount is fully secured.



Replacing the Marker Light

Step 1:

Remove the four T15 screws that hold the shroud in place.



Step 2:

Pull the shroud away from the mirror housing. The lower cap is now loose, so be sure to hold onto the lower cap while doing so.

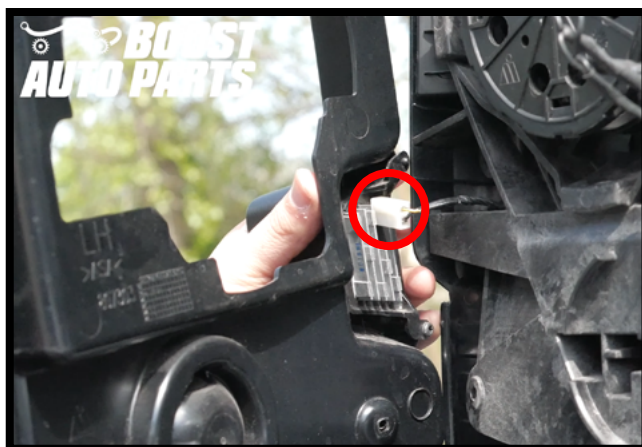


Step 3:

Remove the lower cap from the mirror.

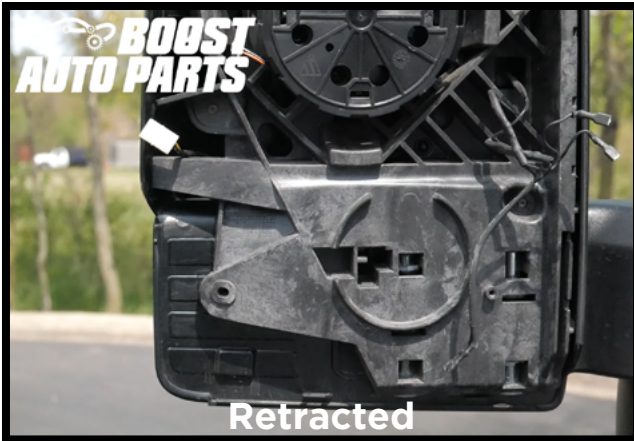
**Step 4:**

Unplug the rear facing cargo light (if equipped) and remove the shroud.

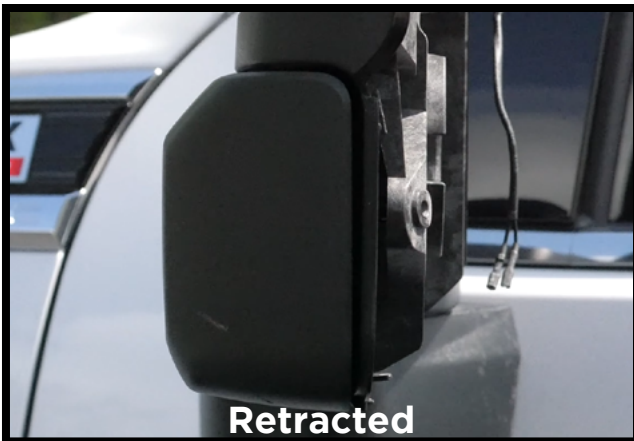


Step 5:

Extend the mirror out half-way.

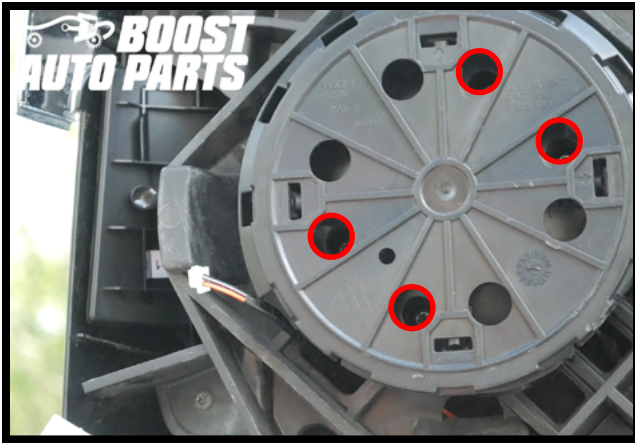
**Note:**

Here is what the mirror should look like from the side. The mirror will slide forward slightly when extended



Step 6:

Using a T15 bit remove the four screws retaining the motor. If needed, tilt the motor towards the screw to gain better access to each one as shown below.

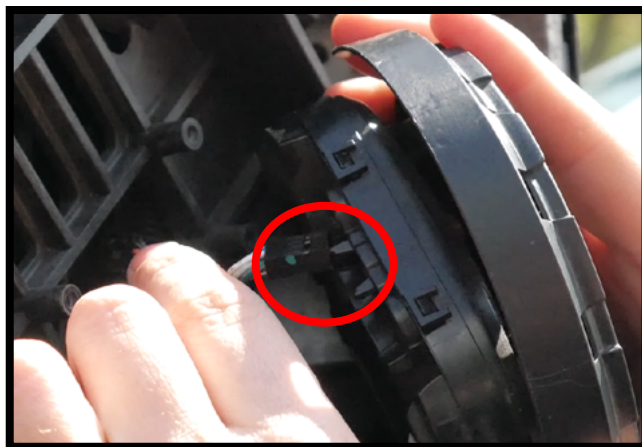
**Step 7:**

Pull the motor away from the mirror housing to access the connector on the back side.

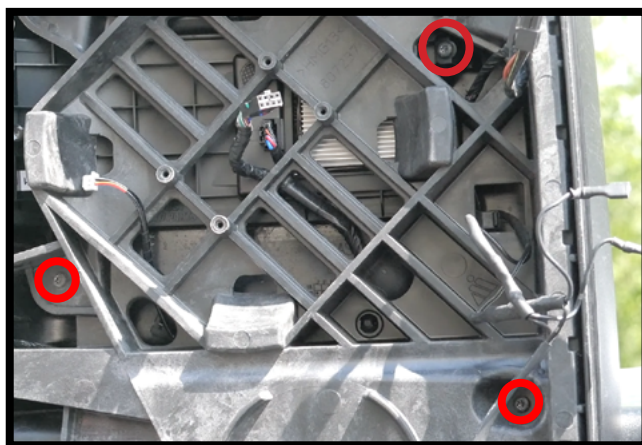


Step 8:

Unplug the connector and remove the motor.

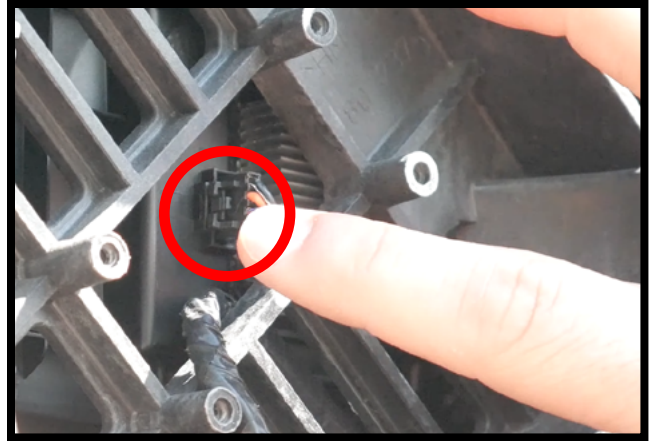
**Step 9:**

Remove the three additional T15 screws.

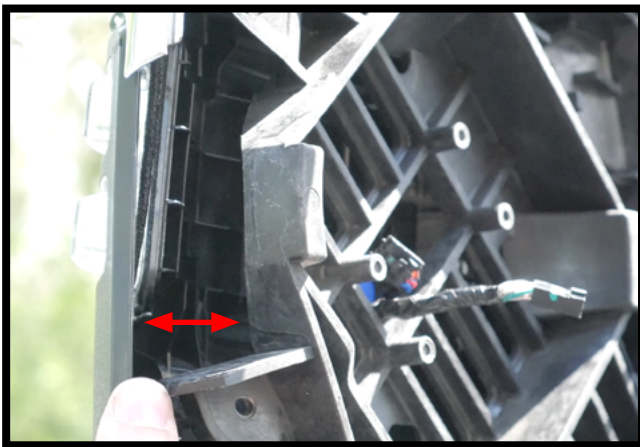


Step 10:

Depress the latch on the front marker light connector and unplug it from the marker light.

**Step 11:**

Separate the front and rear shroud by pulling them away from each other.



Step 12:

Remove the existing marker light from the mirror.

**Step 13:**

Separate the front and rear shroud by pulling them away from each other.

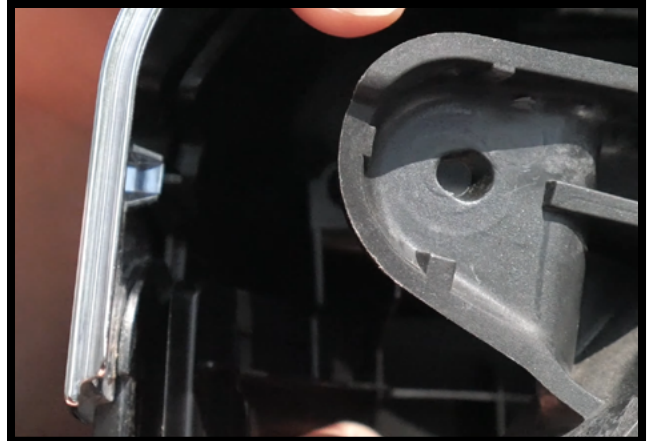


Step 14:

Slide in the new marker light provided by Boost Auto Parts.

**Step 15:**

When lining up the light, make sure the screw holes are aligned perfectly.



Note:

The light should be positioned in place as shown below.

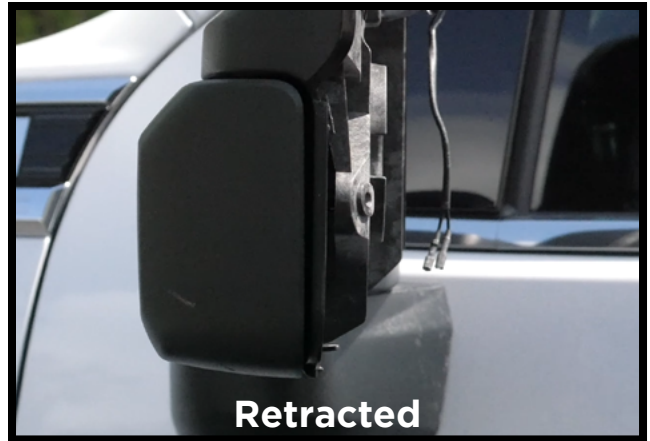
**Step 16:**

Plug in the replacement marker light provided by Boost Auto Parts.

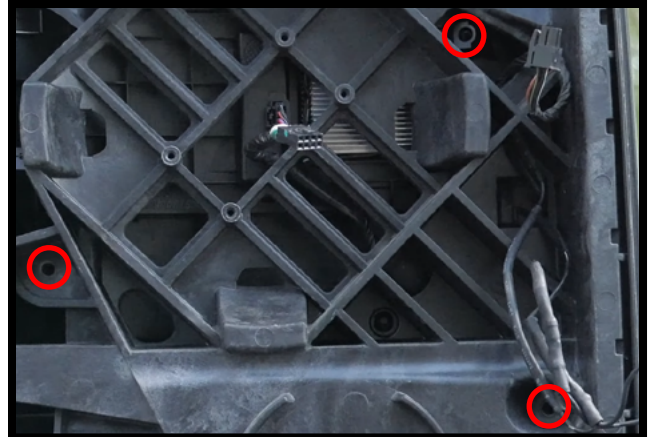


Step 17:

Telescope the mirror all the way in.

**Step 18:**

Reinstall the three T15 screws, make sure the upper 2 screws line up with the replacement Boost Auto Parts light.

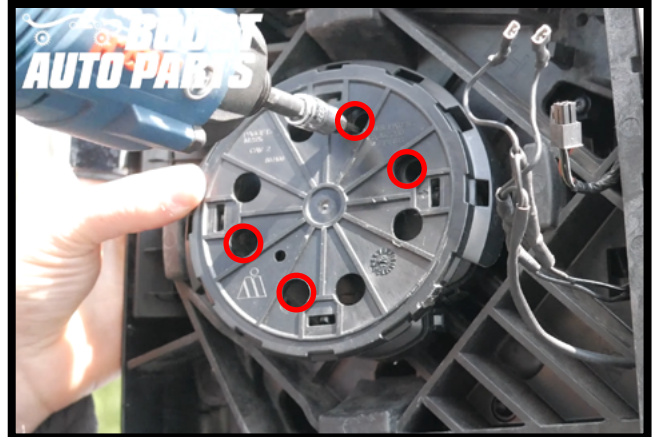


Step 19:

Plug the power adjust motor back in, the connector is key grooved and can only be plugged in one way.

**Step 20:**

Line up the screw bosses and reinstall the four T15 screws that hold the power adjust motor into place.

**Important:**

Make sure the text on the motor is oriented in the correct and upright direction to ensure proper motor function. Be careful not to pinch the harness behind the motor.

Step 21:

To snap the lower cap back into position, line up the lip on the lower cap to the lip that rides in the channel in the mirror.

**Step 22:**

Once the lower cap is in position, slide the cap up. Be sure to hold onto the lower cap in place while installing the front shroud.



Step 23:

Make sure the wiring harness for the cargo light is not pinched, then plug the connector back into the cargo light (if equipped).

**Step 24:**

While holding onto the lower cap, line up the front shroud.

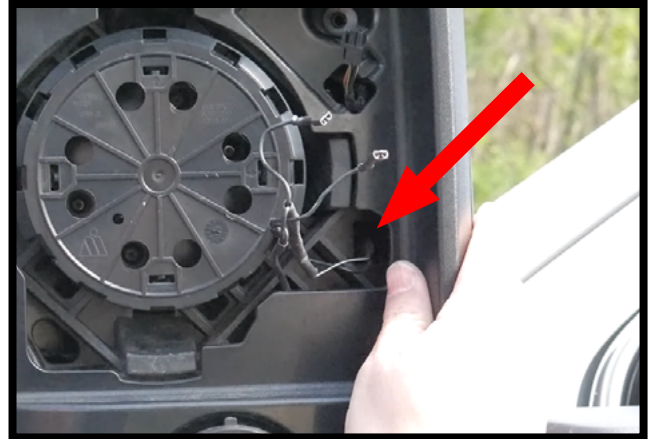


Step 25:

Making sure none of the wires are pinched, route the wires for the blind spot monitoring and auto dim through this hole near the top corner of the shroud (if equipped).

**Step 26:**

Making sure none of the wires are pinched, route any defrost wires through this opening of the shroud.

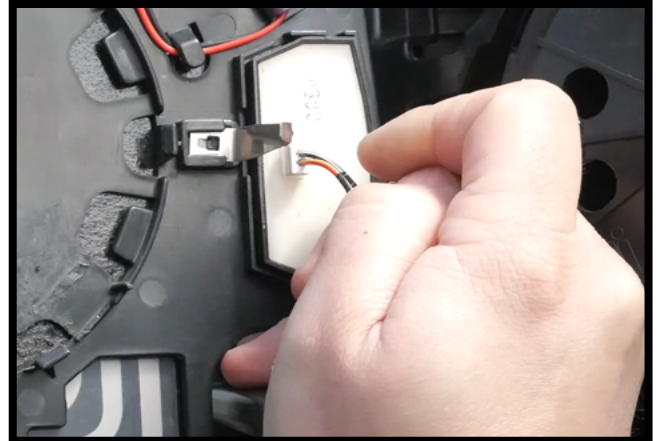


Step 27:

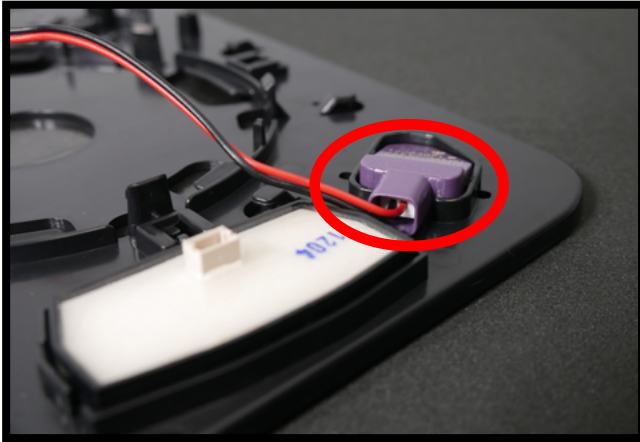
Reinstall the four T15 screws on the shroud.

**Step 28:**

Plug in the signal on glass connector (if equipped).

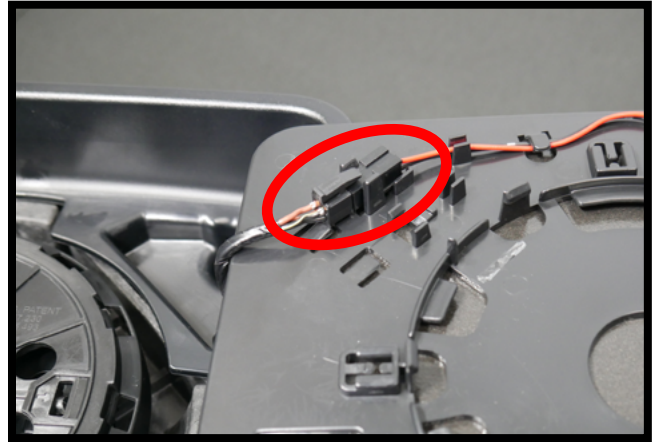


Step 29: This step has two different variations based on what options your vehicle is equipped



Mirrors With Blind Spot Only

If your mirrors are only equipped with blind spot monitoring, install the two pin the connector into the back of the blind spot indicator.

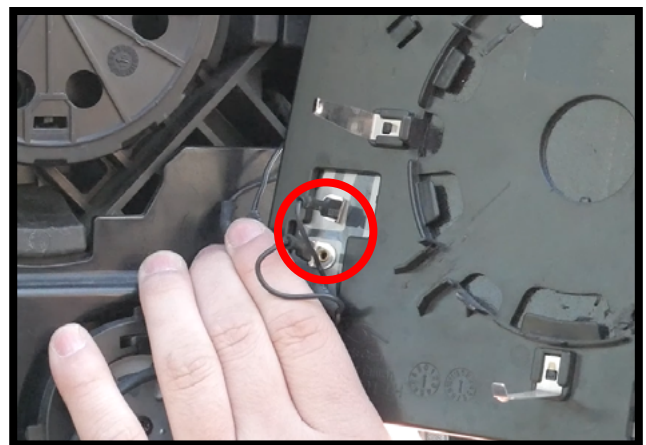


Mirrors With Auto Dim

If your mirrors are equipped with auto dim, reconnect the harness to the four pin connector on the backside of the upper glass.

Step 30:

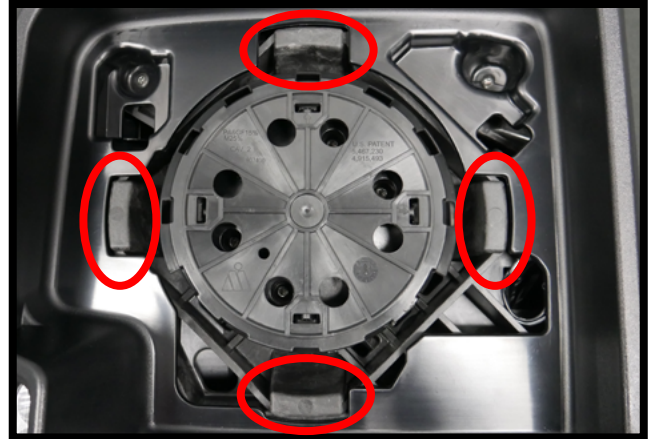
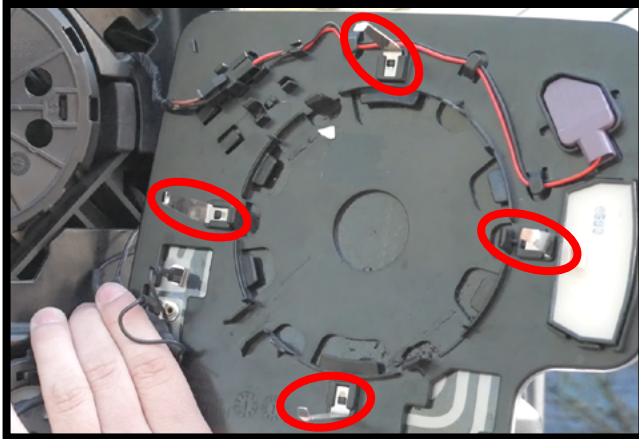
Plug in the defrost wires into the upper glass.



Installing Upper and Lower Glass

**Disclaimer:**

All stabilization pins must slide on the inside of the 4 guides as shown.



Step 1:

Be sure to tuck away any wires or harnesses, then align the stabilization pins and use your hand to snap the upper glass into place.

**Step 2:**

If you have the Boost Auto Parts heated lower glass kit, plug in the defrost wires on the lower glass.



Step 3:

Line the up the lower mount on the mirror to the back of the lower glass. Use the palm of your hand to snap in the lower glass.



Your GM Tow Mirror Marker Light Install is Complete!



If you experience any difficulties or complications during your install, feel free to reach out to our Technical Support Team.

support@boostautoparts.com
765-831-2830