

Installation Instructions

**717930**

2014-24 RAM 2500/3500

6.4L ENGINE

149.5", 160" & 168.9" Wheelbases  
Mega/Crew Cab with 6'4"/8' beds

**OVERVIEW:**

1. Take a moment to read and understand these instructions before installing your Flowmaster performance system.

**NOTE:** Please inventory all parts now before continuing and if necessary, report any missing items to our tech line. This will avoid potentially stranding your vehicle until any missing replacement parts arrive.

ITM #	PART #	DESCRIPTION	QTY.
1	36061M	Inlet Pipe Assembly	1
2	36062M	149" Extension Pipe Assembly	1
3	36063M	169" Extension Pipe Assembly	1
4	74151-Z	Flow FX Muffler	1
5	36068M	Front Tailpipe	1
6	36069M	Rear Tailpipe	1
7	ST508B	Tip	1
N/A	PK1024	Hardware Package includes:	1
8	MC350BS	3/2" Stainless Band Clamp	5
9	HW503	1/2" Hanger Keeper	1

**REMOVE STOCK EXHAUST SYSTEM:**

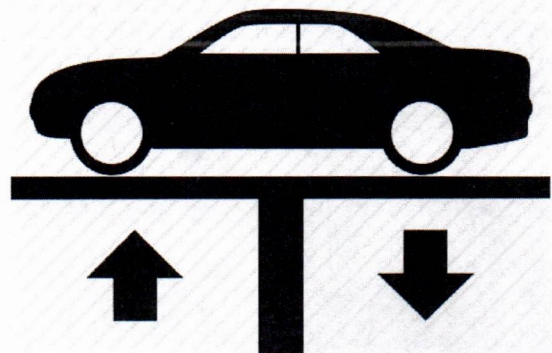
2. Raise vehicle up on a hoist or rack to working height. If you don't have access to a hoist or rack, support vehicle with jack stands.

**WARNING:**

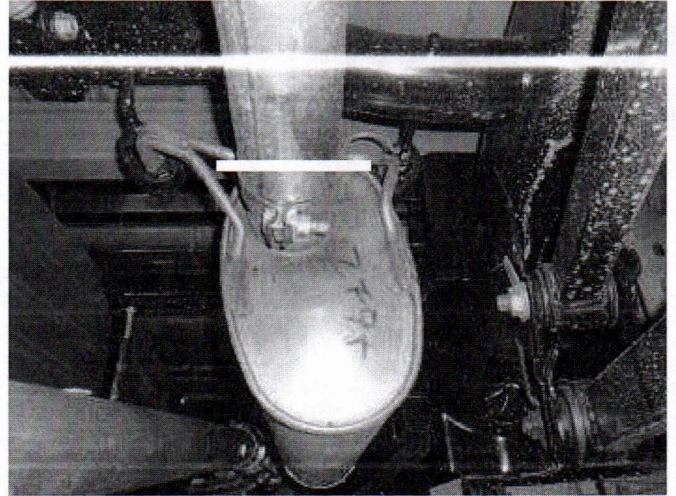
Avoid serious burns! Allow your vehicle time to cool completely before touching any factory engine components.

**To ease preparation and installation of your new kit:**

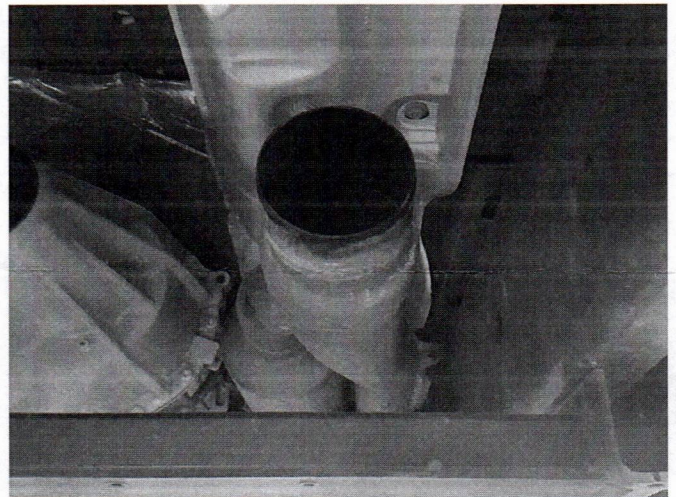
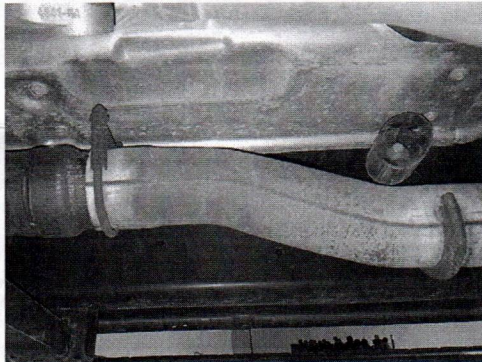
- Apply penetrating lubricant to mounts, bolts and clamps before you remove them.
- Use stands as necessary to support parts as you detach them from your vehicle and again as you install new parts.



3. Cut tailpipe at muffler exit, remove hanger from mount at rear of tailpipe and remove it from vehicle

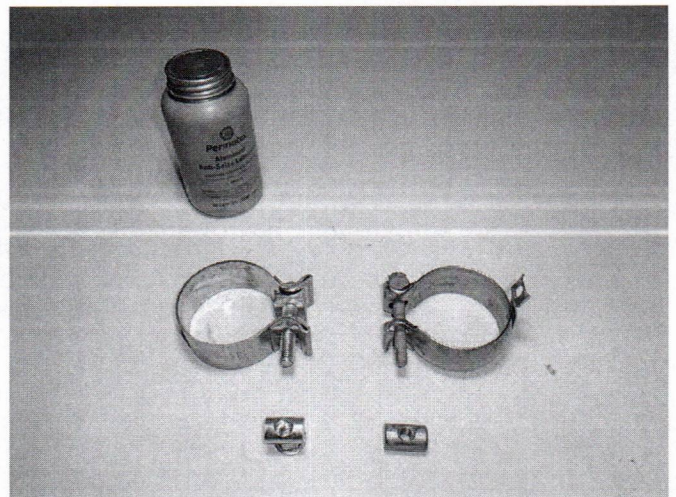


4. Support muffler and remove all hangers from isolators on muffler assembly; then remove clamp on slip connection just behind catalytic converter. Heat or cut to separate connection and remove muffler assembly.



## INSTALL FLOWMASTER EXHAUST SYSTEM

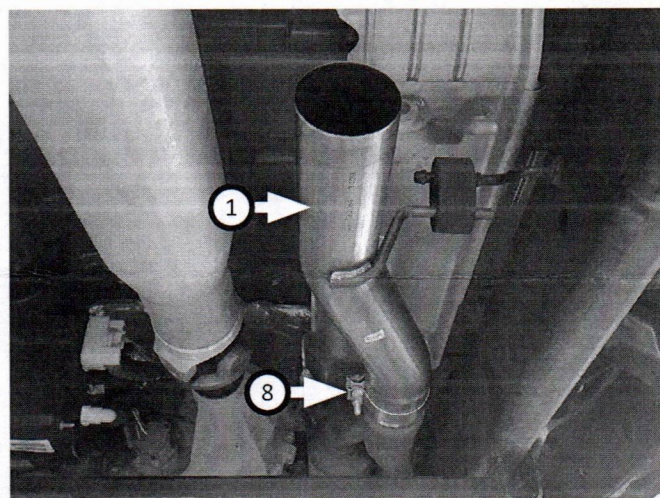
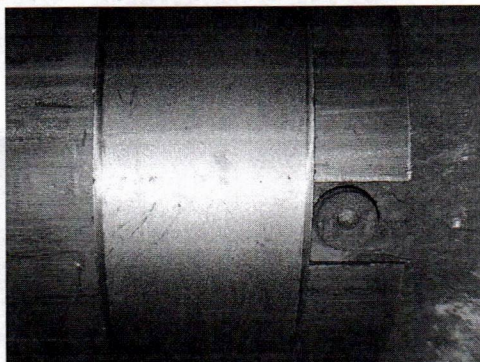
5. Remove nuts from stock and Flowmaster clamps, apply anti-seize compound to bolts and re-install nuts.  
**NOTE:** The image in this step is intended for illustrative purposes only and may or may not accurately reflect components included in your kit.
6. Every slip fit connection in this kit must seat 3" deep except for muffler connections which must seat 2" deep. Find all slip fit components in your kit and mark them accordingly so your Flowmaster exhaust system fits properly onto your vehicle.



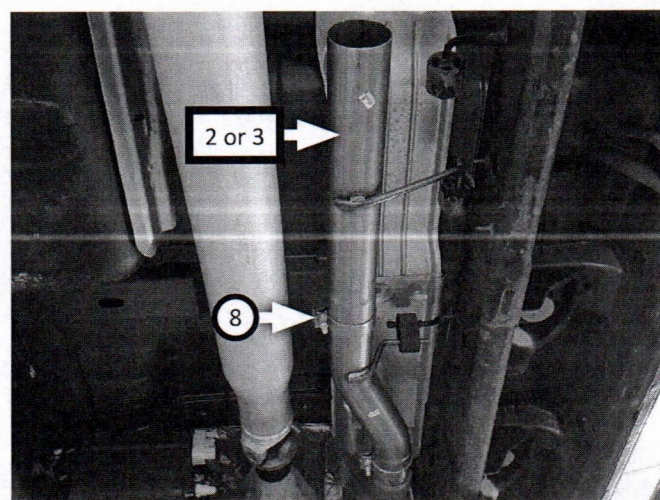
7. Check which specifications your vehicle falls under, then prepare your kit according to the corresponding modifications and assembly combinations to ensure a proper install.

WHEEL BASE	BODY STYLE	BED LENGTH	INLET ASSY:	MODIFICATION
149.5"	Crew Cab	6'4"	Inlet+Extension (36062S)	None
160"	Mega Cab	6'4"	Inlet+Extension (36063S)	Trim 9" from back of extension pipe (36063S)
168.9"	Crew Cab	8'	Inlet+Extension (36063S)	None

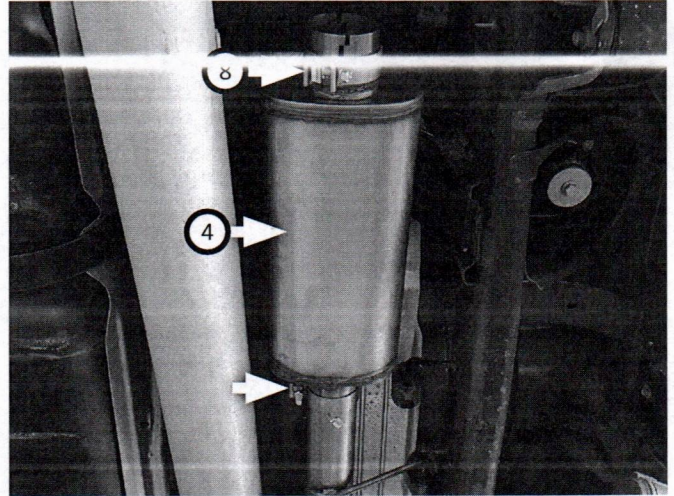
8. Place **clamp (8)** onto **inlet pipe (1)** then connect it to factory front pipe, lining inlet pipe notch with front pipe tab. Insert wire hanger into isolator then tighten clamp enough to allow for adjustment without covering tab.



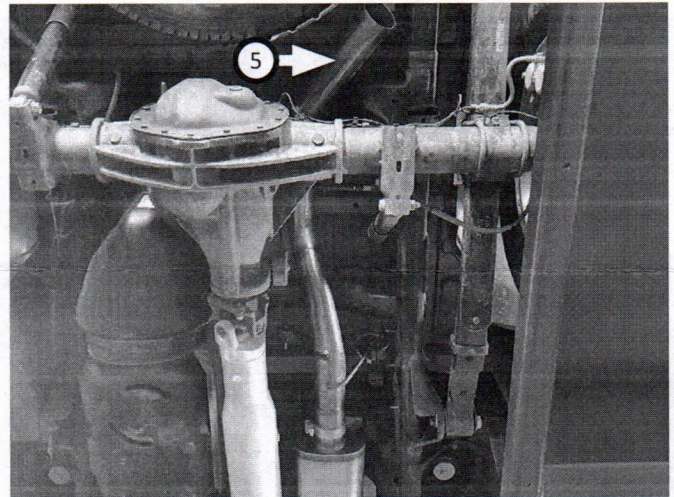
9. Place **clamp (8)** onto **extension pipe (2 or 3)** then connect it to inlet pipe. Connect wire hanger to isolator then tighten clamp just enough to allow for adjustment.



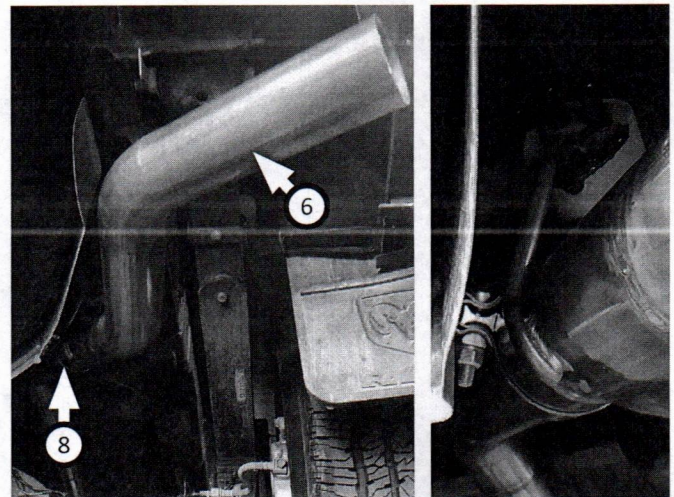
10. Place (x2) **clamps (8)** onto **muffler (4)** then connect it to extension pipe. Tighten front clamp just enough to allow for adjustment.



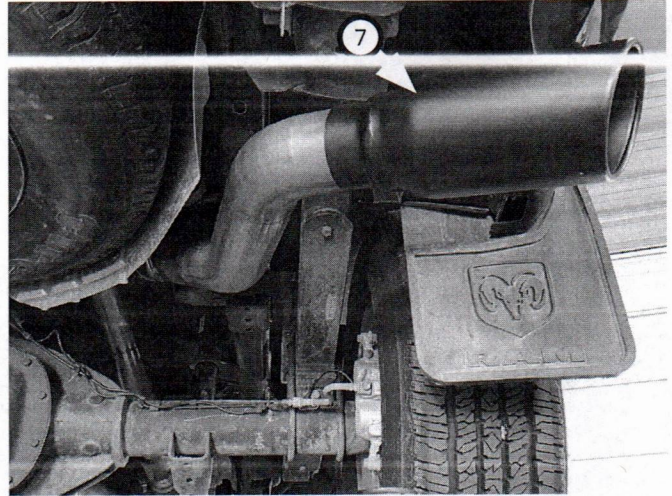
11. Route **front tailpipe (5)** over axle then connect it to muffler. Insert wire hangers into isolators then tighten clamp just enough to allow for adjustment.



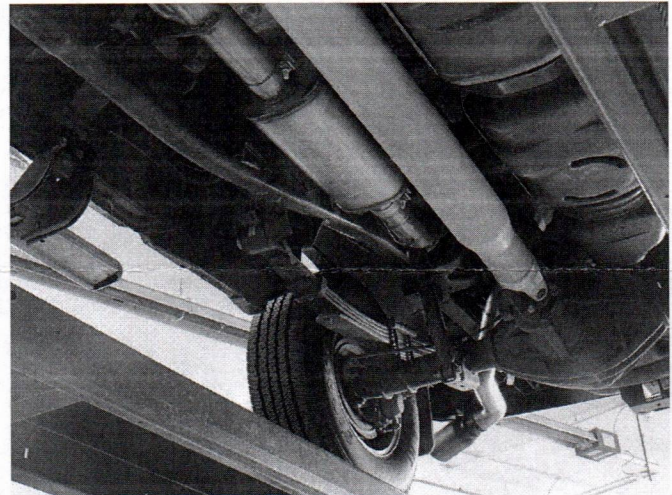
12. Place **clamp (8)** onto **rear tailpipe (6)** then connect it to front tailpipe. Insert wire hanger into isolator then tighten clamp just enough to allow for later adjustment.



13. Place **tip (7)** onto rear tailpipe and tighten inlet. Rotate pipes and tip to desired distance from body or bumper so angle cut on tips are properly positioned.



14. Adjust exhaust components for fit; maintaining ½" clearance and compensating for suspension, travel and vibration. Then fit **hanger keeper (9)** onto sideways hanger.
15. Recommended: Secure slip-fit connections with a 1-inch tack weld then spray high-temp paint over each weld to prevent rust and premature corrosion.



Congratulations, the installation of your FLOWMASTER performance exhaust system is now complete!





Installation Diagram

**717930**

2014-24 RAM 2500/3500

6.4L ENGINE

149.5", 160" & 168.9" Wheelbases  
Mega/Crew Cab with 6'4"/8' beds

