



Not legal for sale or use in California on any pollution controlled motor vehicle.

Ratchet
Extension
13mm Socket
10mm Socket
5/16" Socket
10mm Wrench
3/4" Wrench
4mm Allen Wrench
Flat Blade Screw Driver



	Description	Qty.	Part #		Description	Qty.	Part #		Description	Qty.	Part #
A	HOSE CLAMP; #56	2	08620	K	BOLT; M6 X 1 X 16MM BTNHD	2	07730	U	HOSE CLAMP; #104 BLK ZINC	1	08697KA
B	HOSE; 3.5"ID X 2"L	1	08698	L	WASHER; 1/4" LOCK	2	08198	V	AIR FILTER	1	RU-3101HBK
C	INTAKE TUBE; (HV)	1	087236A	M	WASHER; 1/4"ID X 5/8"OD	8	08275	W	HEAT SHIELD "A"	1	073127A
D	GROMMET; 1"OD, 1/2"ID, 1/2"THK	1	08064	N	HEAT SHIELD	1	073126A	X	HEAT SHIELD "B"	1	073128A
E	CABLE TIES; 11" BLK	1	21590	O	BOLT; M6-1 X 16MM, HEX	3	07812	Y	WASHER; 6MM INTERNAL STAR	8	07724
F	EXTENSION HARNESS	1	21681	P	BRACKET; "Z"	1	083103-1A	Z	BOLT; M5 X .8 X 8MM, BTNHD	8	07740
G	FITTING; VENT, 1/4"NPT, 90DEG	1	08525	Q	NUT; 6MM NYLOCK, HEXHD	3	07512	AA	EXTENSION HARNESS	1	21680
H	HOSE; 5/8"ID X 21"L	1	5-7021	R	ADAPTOR; #454	1	27300	AB	SPACER; .625"OD X .250"ID X .250"L	1	06555
I	HOSE CLAMP; #64 STAINLESS	2	08645	S	BRACKET; "L"	1	083127A	AC	BOLT; M6 X 1 X 20MM HEX	1	07795
J	HOSE; HUMP 4"ID X 3"L	1	08418	T	EDGE TRIM; (55"L)	1	102480	AD	CONNECTOR; HOSE, 3/4" X 5/8"	1	8-171

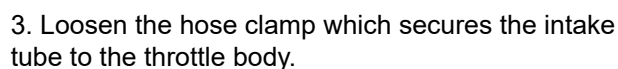
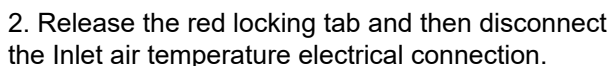
**If you need any assistance please call 1-800-858-3333 to speak with a representative in our Customer Service Center before returning the product.**

**NOTE: FAILURE TO FOLLOW INSTALLATION INSTRUCTIONS AND NOT USING THE PROVIDED HARDWARE MAY DAMAGE THE INTAKE TUBE, THROTTLE BODY AND ENGINE.**

**TO START:**

1. Turn off the ignition and disconnect the negative battery cable.

**NOTE: Disconnecting the negative battery cable erases pre-programmed electronic memories. Write down all memory settings before disconnecting the negative battery cable. Some radios will require an anti-theft code to be entered after the battery is reconnected. The anti-theft code is typically supplied with your owner's manual. In the event your vehicle's anti-theft code cannot be recovered, contact an authorized dealership to obtain your vehicle's anti-theft code.**





4. Disconnect the crank case vent hose from the air box.



5. Disconnect the factory intake hose from the throttle body, then lift up the air box assembly and then remove it from the vehicle.



6. Lift up the engine cover to dislodge it from the mounting posts and then remove it from the vehicle.



7. Disconnect the crank case vent hose from the valve cover port.



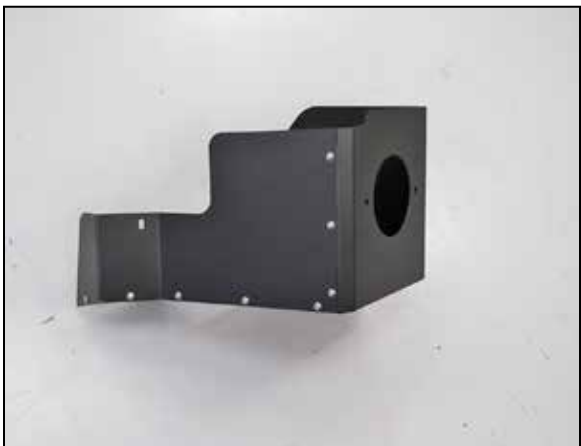
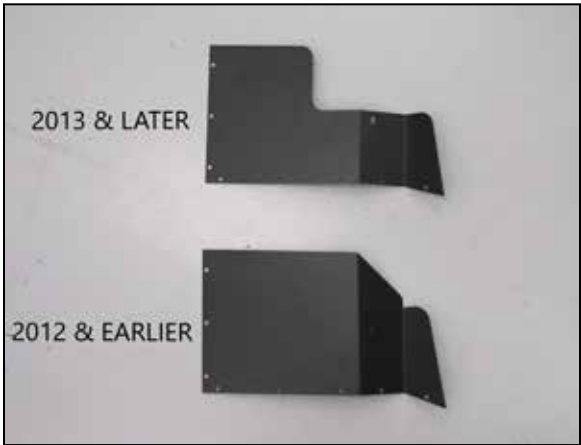
8. Remove the factory 45 deg. elbow from the factory ccv hose assembly. Assemble the K&N CCV hose, union and factory 45deg. elbow as shown.



9. Install the K&N CCV hose assembly onto the factory port and position the assembly as shown.



10. Reinstall the engine cover and position the CCV hose through the opening.



11. Choose the appropriate heat shield side wall for the year model of the vehicle and attach to the heat shield as shown using the provided hardware.



12. Install the provided edge trim onto the heat shield as shown. **NOTE: Some trimming of the edge trim will be necessary.**



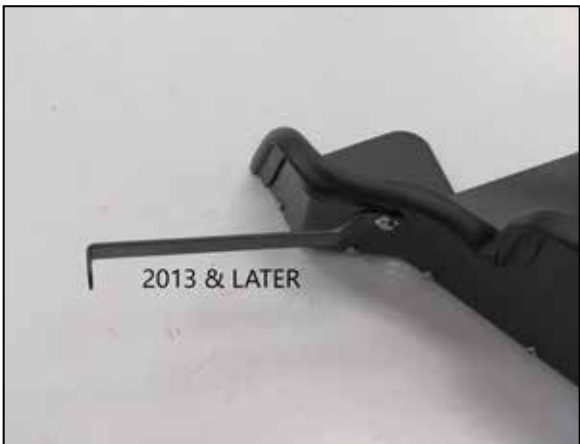
13. Install the provided filter adapter onto the heat shield as shown and secure with the provided hardware.



14. Install the silicone hump hose (08418) onto the filter adapter and secure with the provided hose clamp.



15. Install the heat shield mounting bracket (083127) onto the heat shield using the provided hardware. **NOTE: Do not completely tighten at this time.**



16. Install the heat shield mounting bracket (008103-1) onto the heat shield using the provided hardware. **NOTE: Do not completely tighten at this time.**





17. Remove the front air box mounting bracket bolt shown. **NOTE: This bolt will be used in a later step.**



18. Remove the front fender mounting bolt shown. **NOTE: This bolt will be used in a later step.**



19. Install the heat shield assembly into the vehicle and secure with the bolts removed in steps #17 and 18. Do not completely tighten at this time.



20. Install the provided silicone hose (08698) onto the throttle body and secure with the provided hose clamp.



21. Install the provided grommet into the K&N intake tube as shown.



22. Install the 1/4npt vent fitting into the K&N intake tube as shown.



23. Remove the inlet air temperature sensor from the stock intake tube. **NOTE: Take care removing the sensor as it is very fragile.**



24. Install the inlet air temperature sensor into the grommet installed into the K&N intake tube as shown. **NOTE: Take care while installing the inlet air temperature sensor as it is very fragile.**



25. Install the K&N intake tube into the silicone hump hose and then into the silicone hose at the throttle body. Align the heat shield assembly for proper fit and then tighten the heat shield mounting bolts then tighten the hose clamps securing the intake tube.



26. Connect the crank case vent hose to the vent fitting installed into the K&N intake tube. Secure with the provided tie wrap. **NOTE: Some trimming of the vent hose will be necessary.**



27. Connect the provided inlet temperature sensor extension into the factory wiring harness and then connect the other end to the inlet temperature sensor.



28. Install the K&N air filter and secure with the provided hose clamp.



29. Reconnect the vehicle's negative battery cable. Double check to make sure everything is tight and properly positioned before starting the vehicle.

30. It will be necessary for all K&N® high flow intake systems to be checked periodically for realignment, clearance and tightening of all connections. Failure to follow the above instructions or proper maintenance may void warranty.

**ROAD TESTING:**

1. Start the engine with the transmission in neutral or park, and the parking brake engaged. Listen for air leaks or odd noises. For air leaks secure hoses and connections. For odd noises, find cause and repair before proceeding. This kit will function identically to the factory system except for being louder and much more responsive.

2. Test drive the vehicle. Listen for odd noises or rattles and fix as necessary.

3. If road test is fine, you can now enjoy the added power and performance from your kit.

4. K&N Engineering, Inc., requires cleaning the intake system's air filter element every 50,000 miles. When used in dusty or off-road environments, our filters will require cleaning more often. We recommend that you visually inspect your filter once every 25,000 miles to determine if the screen is still visible. When the screen is no longer visible some place on the filter element, it is time to clean it. To clean, purchase our Synthetic Filter Cleaner, part number 99-0624 and follow the easy instructions.