



Installation Instructions

Part No. **2014**

Product: Running Boards

Application:

RAM Single Cab 2009-2018 HD 2019 - Present

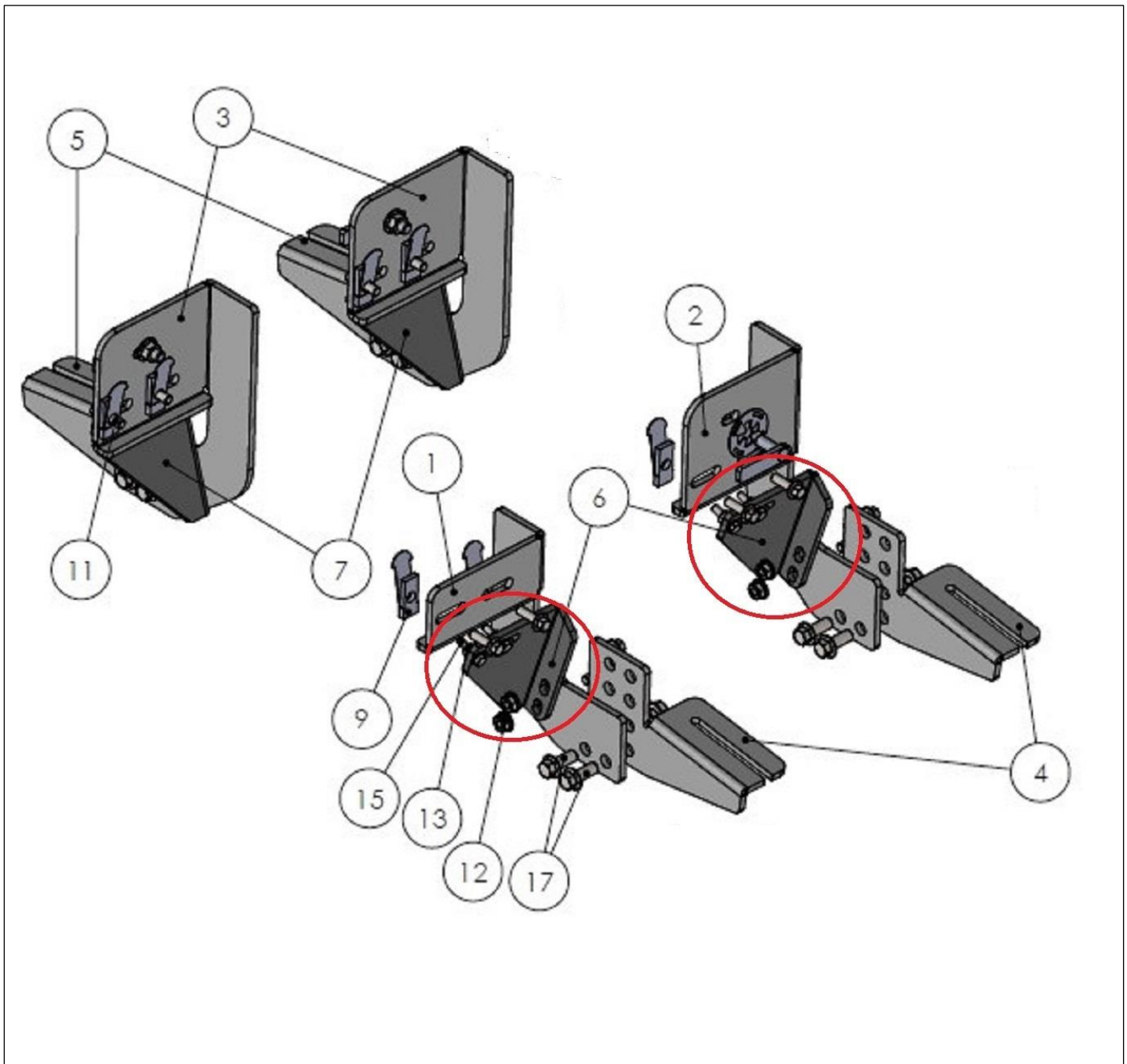
Level of Difficulty: **1** 2 3 4 5

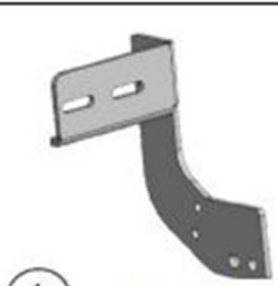
Installation Time: 60 Min.

REV 3 12/01/22

Hardware	Torque Aluminum	Torque Steel to Steel
M6 Bolt	3 ft-lbs.	14 ft-lbs.
M8 Bolt	7 ft-lbs.	35 ft-lbs.
M10 Bolt	16 ft-lbs.	64 ft-lbs.
M12 Bolt	28 ft-lbs.	112 ft-lbs.

ATTENTION: Use correct torque settings to avoid damaging the running boards and or mounting brackets. Failure to do so will void your warranty. If you have any questions, please contact our technical team at 1-866-717-6645





1
2013850F0
DRIVER SIDE
FRONT BRACKET
1 x QTY



2
2013850C0
DRIVER SIDE REAR
BRACKET
1 x QTY



3
2013850R0
PASSENGER SIDE BRACKET
2 x QTY



4
2013850F1
DRIVER SIDE
2 x QTY



5
2013850R1
PASSENGER SIDE
2 x QTY



6
2013850F2
DRIVER SIDE
SUPPORT BRACKET
2 x QTY



7
2013850R3
PASSENGER SIDE
SUPPORT BRACKET
2 x QTY

HARDWARE



8
HTC 262-
M10x30
5x15x60
3 x



9
HTC 311-
M8
21.3x11.75
8x



10
M10 FLANGE
NUT
11x



11
M8x25
FLANGE BOLT
16x



12
M8 FLANGE
NUT
8x



13
M6 FLANGE
NUT
8x



14
HTC 269-
CLIPS -(M10)
3x



15
M6x25
BOLT
8x



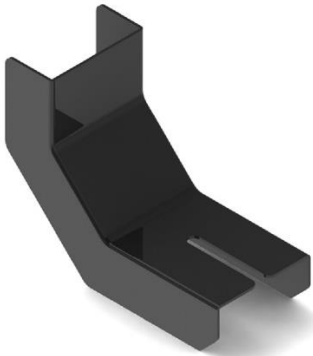
16
M6
WASHER
8x



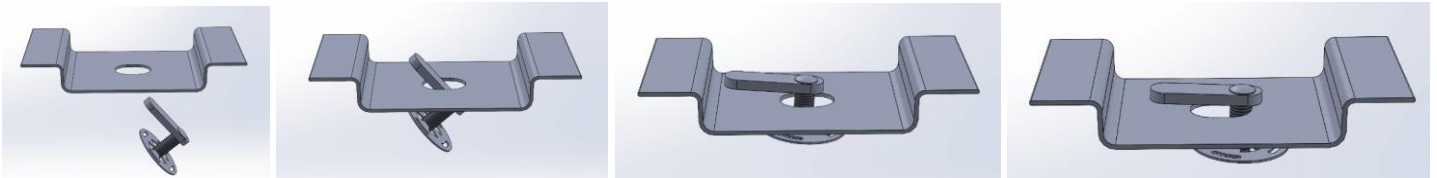
17
M10x25
FLANGE BOLT
8x

Installation Instructions 2014 Bracket Kit

Thank you for choosing the Romik DRP System. This system allows you to adjust the brackets from 0 to 3-inch drop. If you ordered the optional DRP cover you can customize them to match the desired height by cutting on the lines inside the cover. Please test before cutting, in many cases you will be able to tuck the cover behind the body of the vehicle without cutting. **Blue Loctite is recommended** Images below are for illustration purposes only your brackets may look different.

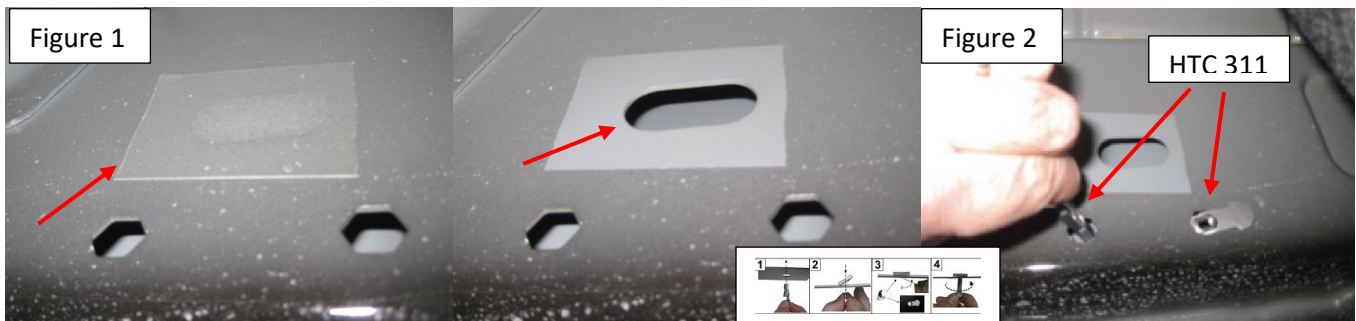


Important Install Tip: When installing Romik HTC inserts follow the sequence below. Make sure the HTC is seated correctly and do not use power tools as this will only spin the insert and possibly damage it. Test by tugging on it before installing bracket. **Blue loctite is highly recommended.**



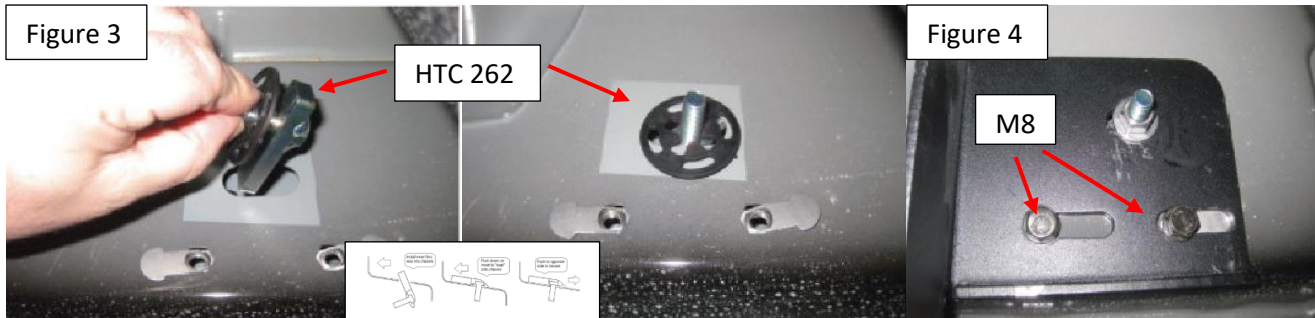
Step 1: Locate front mounting locations and hardware as per 1st page of this installation manual.

Step 2: Remove factory tape from all locations, Insert HTC 311 on all locations as shown Figure 2. Note some models come equipped with threaded inserts and this step may not be necessary.



Installation Instructions 2014 Bracket Kit

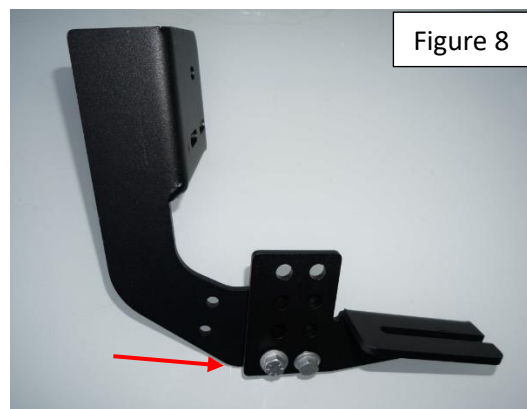
Step 3: Install provided HTC 262 as shown on Figure 3, install main bracket as shown on Figure 4. Do not tighten



Step 4: Install extra support bracket with supplied M6 hardware on all 3 locations Figure 5, attach using supplied M6 hardware Figure 6. Attach main bracket to extra support using supplied M8 hardware Figure 7.



Step 5: Install bracket lower portion and set your desired height. Figure 8.



Step 6: Install DRP covers on brackets and proceed to last page of this manual for running board install instructions and torque values. Use of a level is recommended.

Step 7: Place a level on the running boards and torque lower portion on DRP brackets to 65 ft lbs.

For Technical support please call our team at 1-866-717-6645 and one of our experts will assist you with this installation.

Thank you for choosing Romik.

Installation Instructions Running Boards

NOTE: Use of power tools will damage the bottom of the running board and void your warranty.

Step 1: loosen the M8 hardware on back of the running boards.

Step 2: Slide running board onto brackets

Step 3: Tighten hardware to 7 ft lbs.

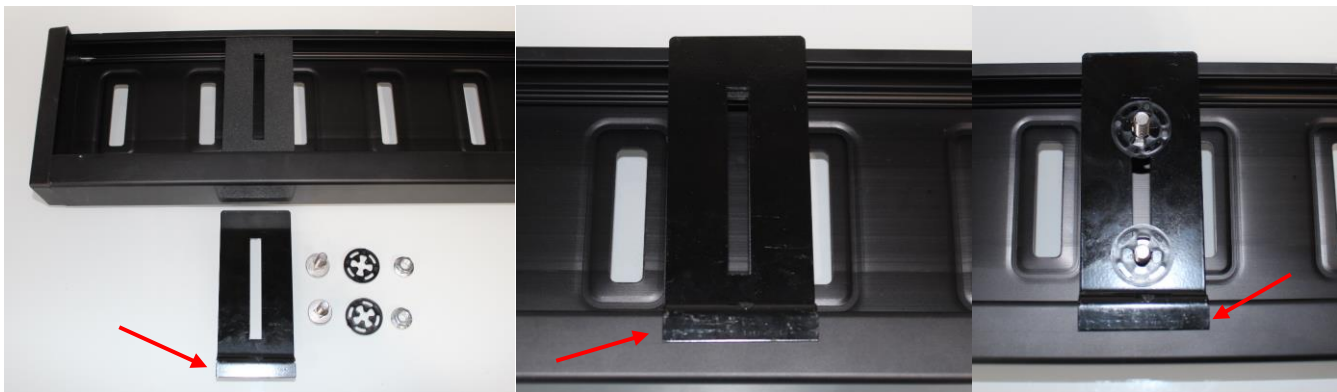


ROF/RPD/ROB Running boards

Step 1: Place clamping plate on top of running board as shown below. Make sure clamping plate sits correctly on running board surface.

Step 2: Install carriage bolts and plastic retaining clips as shown below.

Step 3: Install and tighten hardware to 7 ft lbs.



Product Registration and Warranty Information

- Register your Romik products at <https://romik.com/productregistration>
- Warranty information at <http://www.romik.com/warranty>

Cleaning and maintaining your Romik Running boards

Cleaning and maintaining your running boards is important, apply a light coat of a quality carnauba wax at least 2X per year. Wash often with mild soap and make sure to remove all soap residue. Many car automatic carwashes use a strong soap, make sure to use enough water to remove all residue.

For video instructions on how to clean your Romik products please click here <https://romik.com/cleaning>