

advanced FLOW engineering

Instruction Manual P/N: 77-82009 SCORCHER BLUE Bluetooth Power Module

Make: **DODGE** Model: **2500**

Make: **DODGE** Model: **3500**

Make: **RAM** Model: **2500**

Make: **RAM** Model: **3500**

Year: **2013-2020** Engine: **L6-6.7L (td) Cummins**

Year: **2013-2020** Engine: **L6-6.7L (td) Cummins**

Year: **2013-2020** Engine: **L6-6.7L (td) Cummins**

Year: **2013-2020** Engine: **L6-6.7L (td) Cummins**



- Please read the entire instruction manual before proceeding.
- Ensure all components listed are present.
- If you are missing any of the components, call customer support at 951-493-7185.
- Ensure you have all necessary tools before proceeding.
- Do not attempt to work on your vehicle when the engine is hot.
- Disconnect the negative battery terminal before proceeding.
- Retain factory parts for future use.

Label	Qty.	Description	Part Number
A	1	Module	R77-82009
B	1	LED Switch	05-70029
C	1	Bypass Plug	05-70017
D	1	Harness	AFE-10-116
E	2	Velcro (2 Inches)	05-01244
F	5	Cable Ties	05-60167
G	2	Double Sided Tape	07-90001





SLEEP MODE

Figure A

Refer to Figure A for Step 1.

Step 1: Before installing the aFe POWER Module you must place your vehicle's ECU in sleep mode. In order to place your vehicles ECU in sleep mode you will need to do the following:

- If the engine is cold, open the hood, close the doors, lock the car and wait 30 seconds
- If the engine is warm, open the hood, close the doors, lock the car and wait 20 minutes
- If the engine is warm and you can't wait 20 minutes, disconnect the battery



Do NOT open the doors or start the vehicle when one of the sensor is disconnected. This could create a check engine light.



Figure B

Refer to Figure B for Steps 2-3.

Step 2: Locate the MAP sensor. The MAP sensor is on the firewall side of the intake manifold and the connector is gray.

Step 3: Locate the injector plug connectors. These are the 2 connectors that are next to the engine valve covers, and have long light blue connectors.

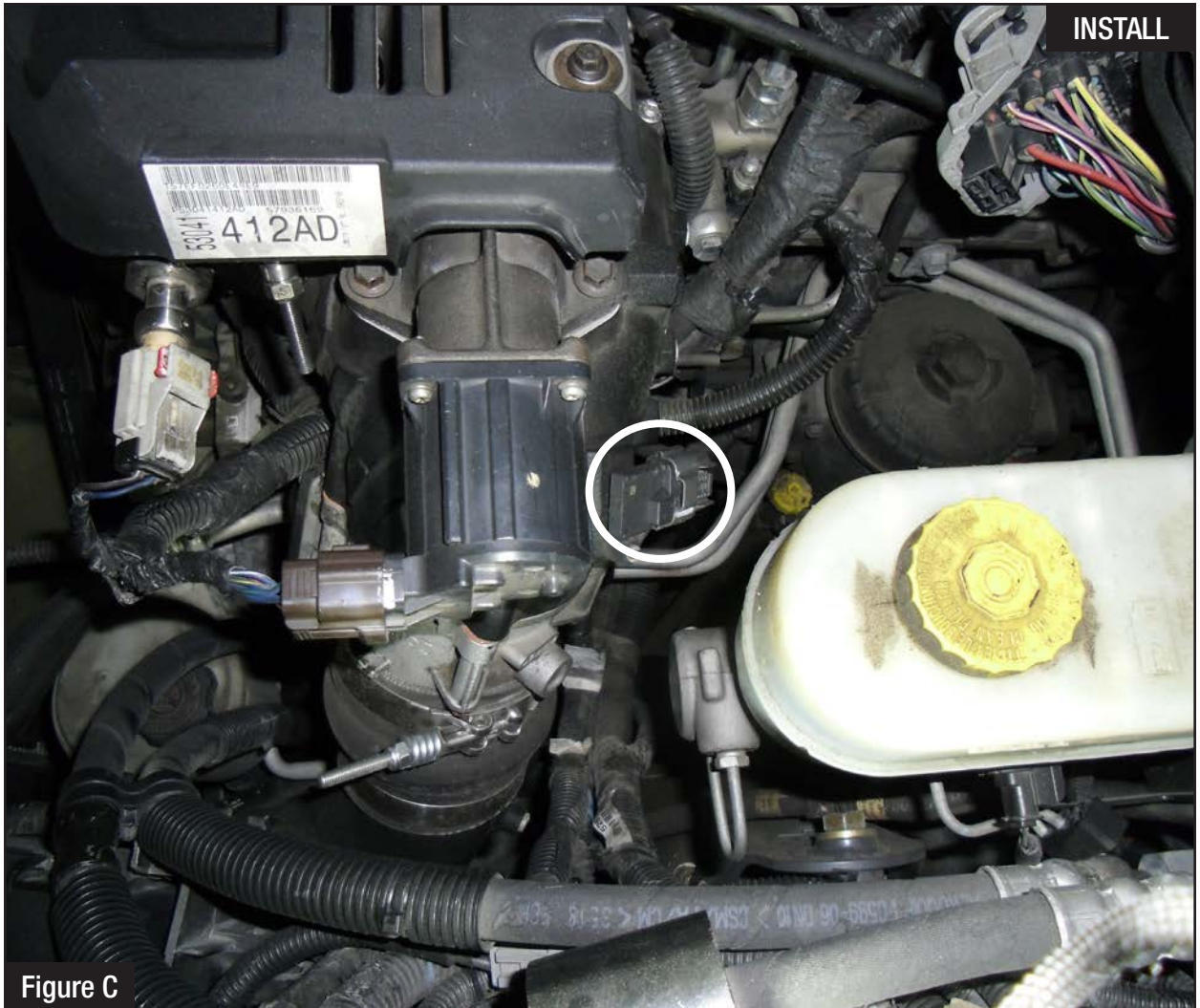


Figure C

Refer to Figures C for Steps 4-5.

- Step 4: Locate and disconnect the MAP sensor connector, by pressing down on the locking tab and sliding it out of the sensor.
- Step 5: Locate the MAP sensor jumper harness on the aFe POWER harness. This is the longer jumper harness with gray connectors. Plug the female connector of the aFe POWER harness into the MAP sensor, then take the male connector of the aFe POWER harness and connect to the female connector of the engine harness.



Figure D

Refer to Figure D for Step 6.

Step 6: Check with the picture to make sure the connectors are correctly connected.



Make sure connections are fully engaged and not reversed. Usually, connectors make a snapping sound when fully engaged.



Refer to Figure E for Steps 7-8.

- Step 7: Locate and disconnect the front injector connector. Release the connector by sliding a small flathead screwdriver to press and hold down the locking tab, and then wiggle the blue half of the connector up and out of the black half.
- Step 8: Locate the front injector plug jumper harness on the aFe module. This is the harness labeled “engine fan.” Plug the female connector of the module into the stock injector plug connector, then take the male connector of the module and connect to the female connector of the engine harness.

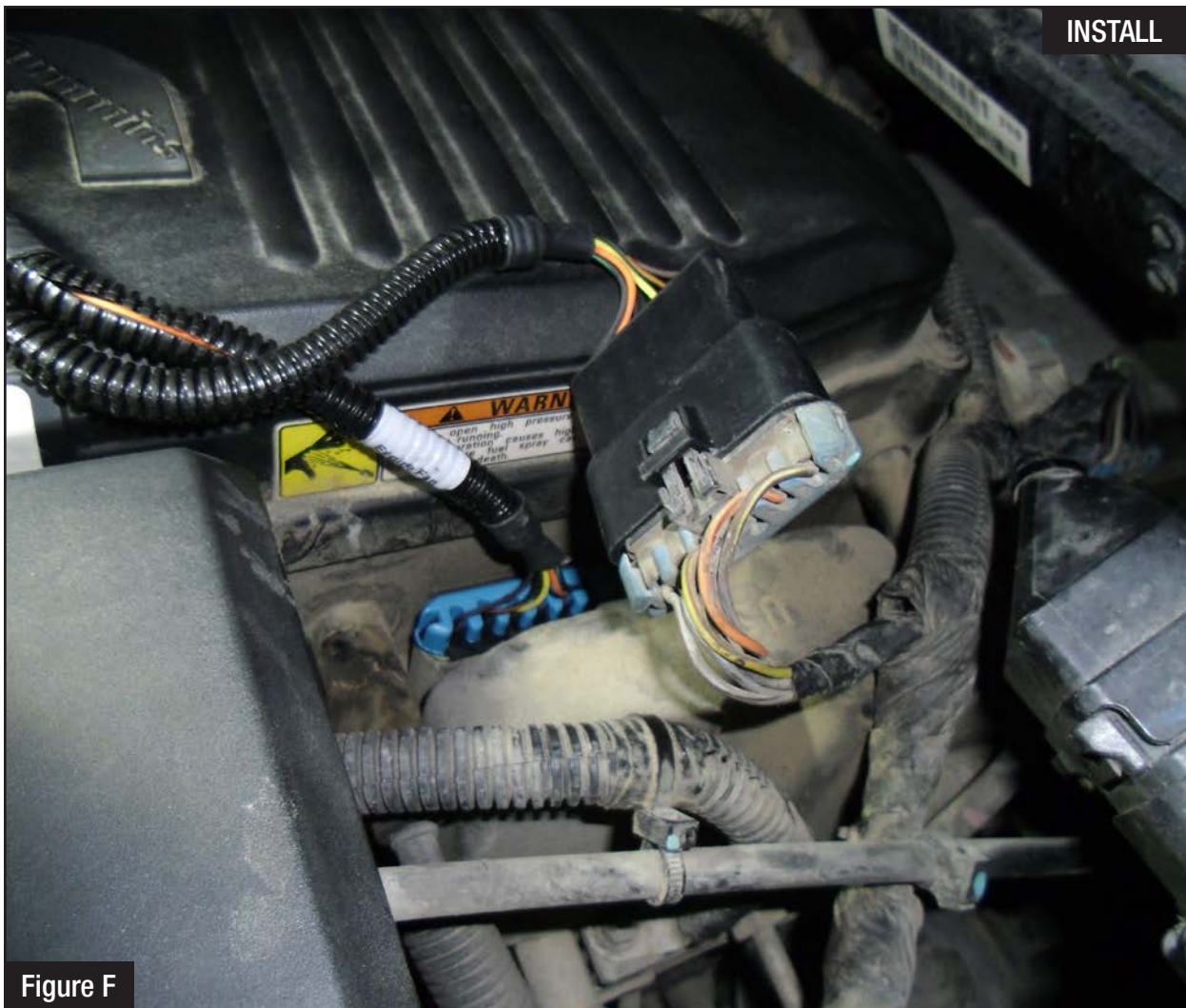


Figure F

Refer to Figure F for Step 9.

Step 9: Check with the picture to make sure the connectors are correctly connected.



Note: Make sure connections are fully engaged and not reversed. Usually, connectors make a snapping sound when fully engaged.



Figure G

Refer to Figure G for Steps 10-12.

- Step 10: Locate and disconnect the rear injector connector. The process is the same as the front connector, but you may have to move the foam insulation to help access this connector.
- Step 11: Locate the rear injector plug jumper harness on the aFe module. This is the harness labeled “flywheel.” Plug the female connector of the module into the stock injector plug connector, then take the male connector of the module and connect to the female connector of the engine harness.
- Step 12: Check with the picture to make sure the connectors are correctly connected.



Figure H

Refer to Figure H for Steps 13-14.

Step 13: Connect the black ground terminal cable on the aFe module to the negative battery post by removing the 13mm nut, placing the terminal and reinstalling the nut.

Step 14: Connect the red power terminal cable on the aFe module to the positive battery post by removing the 10mm nut, placing the terminal and reinstalling the nut.



Figure I

Refer to Figure I for Steps 15-16.

Step 15: Secure the Scorch Blue module on top of the fuse box near the battery, or any other desired location using the Velcro provided. The module must be located within reach of the LED switch harness if being used.

Step 16: Connect the Scorch Blue module to the harness. Make sure the connector is fully engaged



Note: The doors of the vehicle can now be opened to proceed with the installation of the switch.



Figure J

Refer to Figure J for Steps 17-18.

The installation of the LED switch in the cabin is optional.

Step 17: Select the desired location of the LED switch. Route the cable on the back of the switch to exit toward the top or bottom.

Step 18: Use the provided double sided tape to secure the LED switch in the desired location.

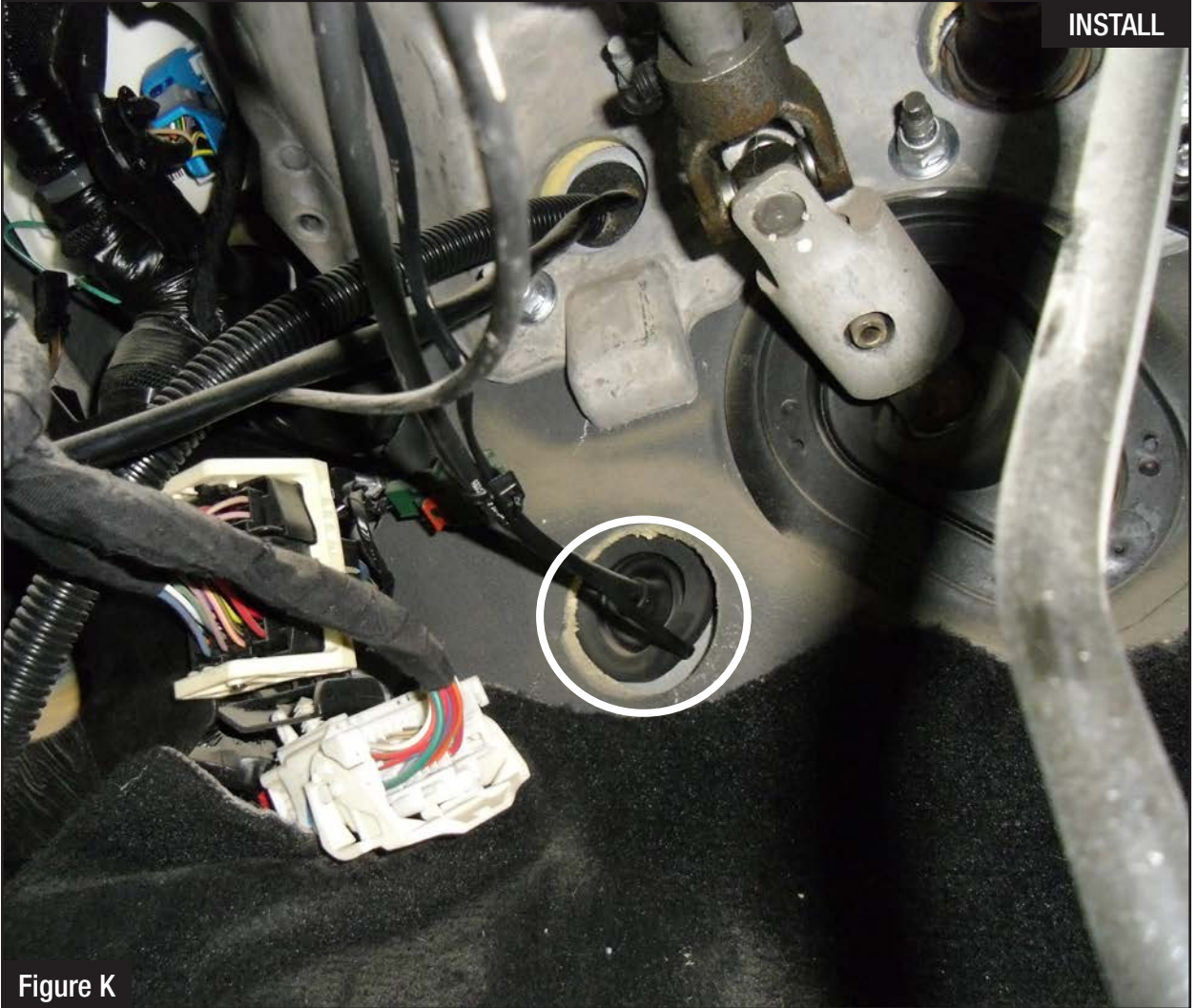


Figure K

Refer to Figure K for Steps 19-20.

Step 19: Carefully route the switch cable behind steering wheel cover or cabin trim cover.

Step 20: Route the switch cable through firewall and into the engine bay. Follow the main harness through the grommet into the firewall.

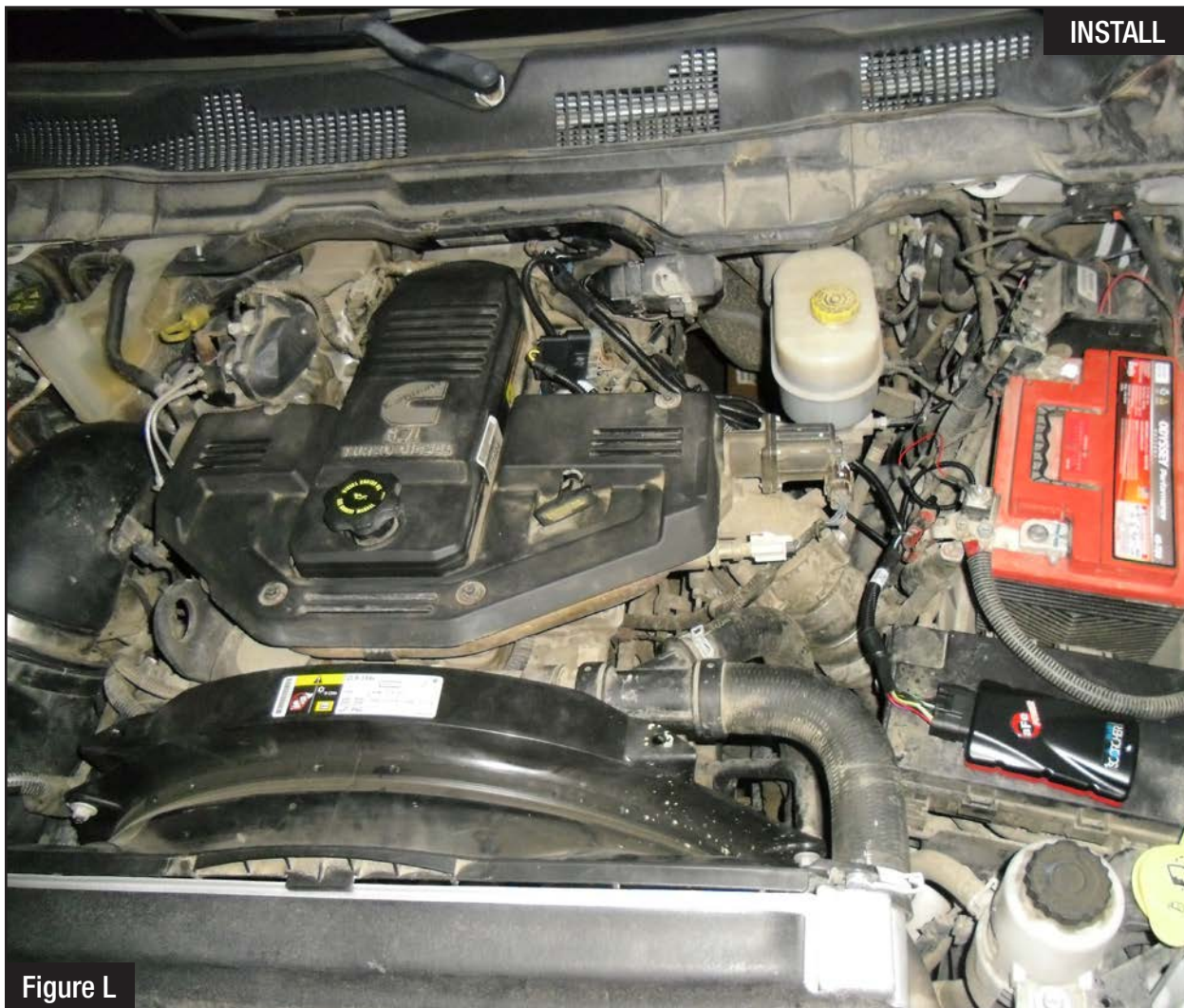


Figure L

Refer to Figure L for Steps 21-22.

Step 21: Plug the end of the switch cable to the harness inside the engine compartment.

Step 22: Secure the wires away from any extreme heat and moving parts with the provided ties. Make sure all connections are secured and fully engaged.



Note: The installation of the module itself is now completed. Keep regarding the install instruction to learn how to use all its features.



Figure M

Refer to Figure M.

(Picture is for reference)

The blue LED light will start flashing once the module is connected to the truck and the ECU on. The blue LED will become solid if the module gets connected through Bluetooth to a device.



Refer to Figure N (LED Switch).

When turning on the vehicle, each LED will flash and it will stop at its last setting. The LED on the switch represents the different level of power.

- Green LED: Stock
- Yellow LED: Sport
- Orange LED: Sport+
- Red LED: Race

Use the grey button to select the desired setting. Power adjustments can be done at any moment while the unit is on. The LED switch can be used at the same time of the Bluetooth app.

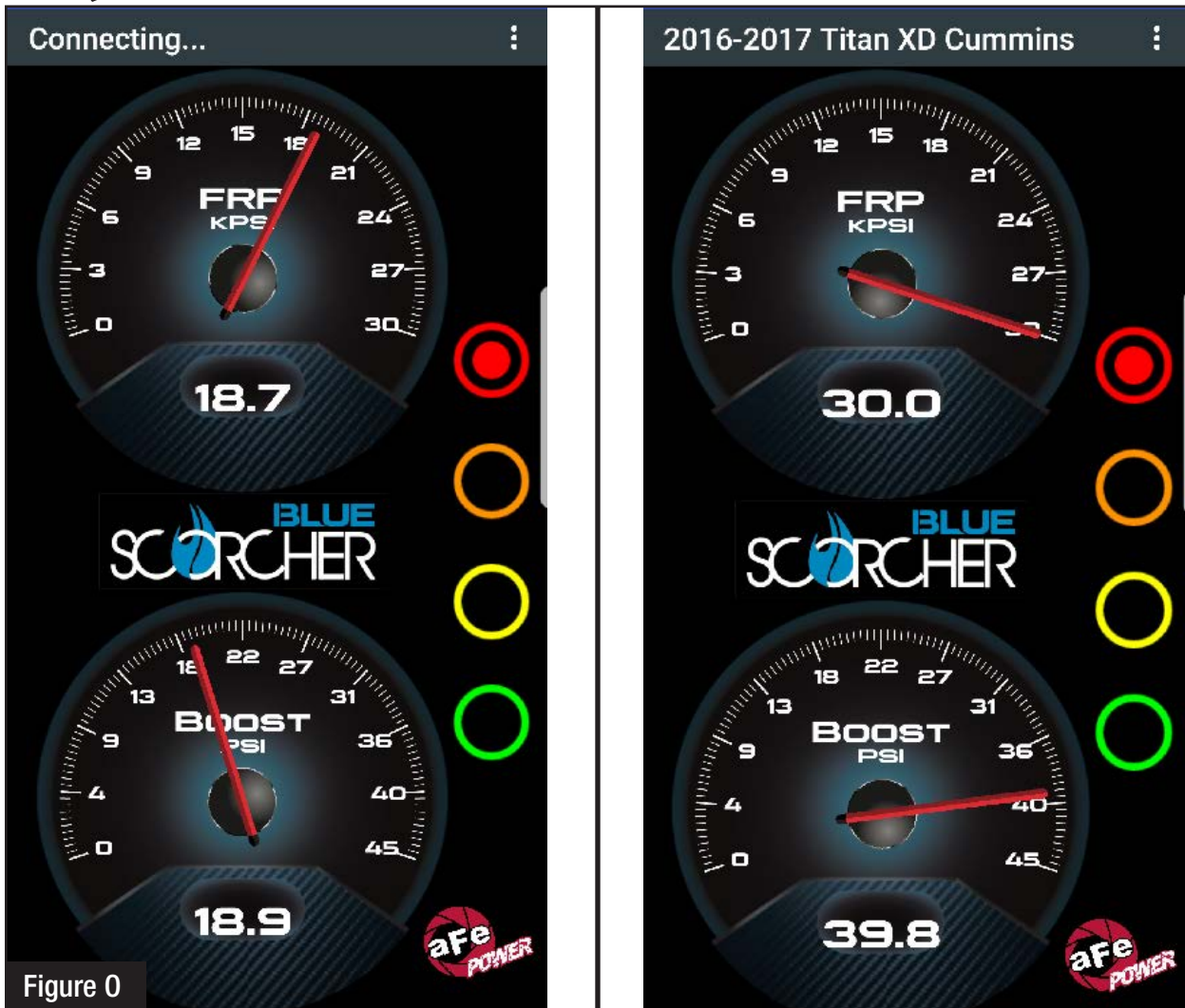


Figure 0

Refer to Figure 0 (app connection - iOS).

For iOS device, download the app from the apps store. Make sure the Bluetooth is activated on your device. Open the app and it will automatically connect through Bluetooth to the SCORCHER BLUE module when the vehicle and module are on. When connected, the vehicle description will show up on top of the screen and the gauges will show current data.

The blue LED light on the module will become solid once connected to a Bluetooth device. Simply tap on the green, yellow, orange and red button to switch between the modes.

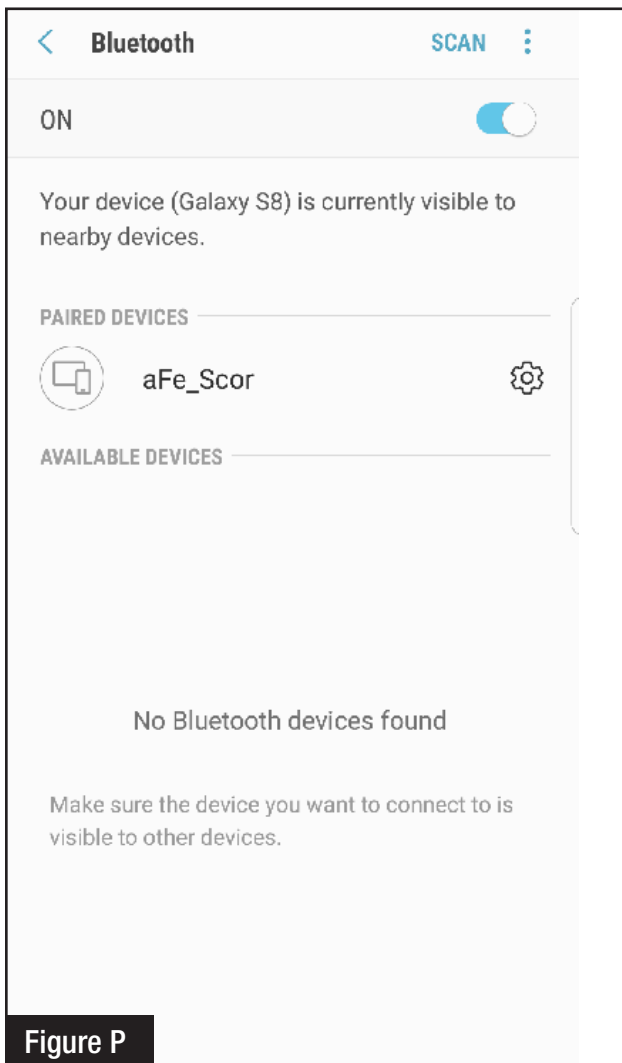


Figure P



Refer to Figure P (app connection- Android).

For Android device, download the app from the play store. For the first connection, go to the Bluetooth settings of your device, turn on Bluetooth and scan for available devices. Select “aFe SCOR” and pair with device. The vehicle needs to be on and the module connected. Once shown as paired device, open the app on your device and it will automatically connect to the vehicle. The vehicle description will appear on top of the screen and the gauges will show current data.

The blue LED light on the module will become solid once connected to a Bluetooth device. Simply tap on the green, yellow, orange and red button to switch between the modes.

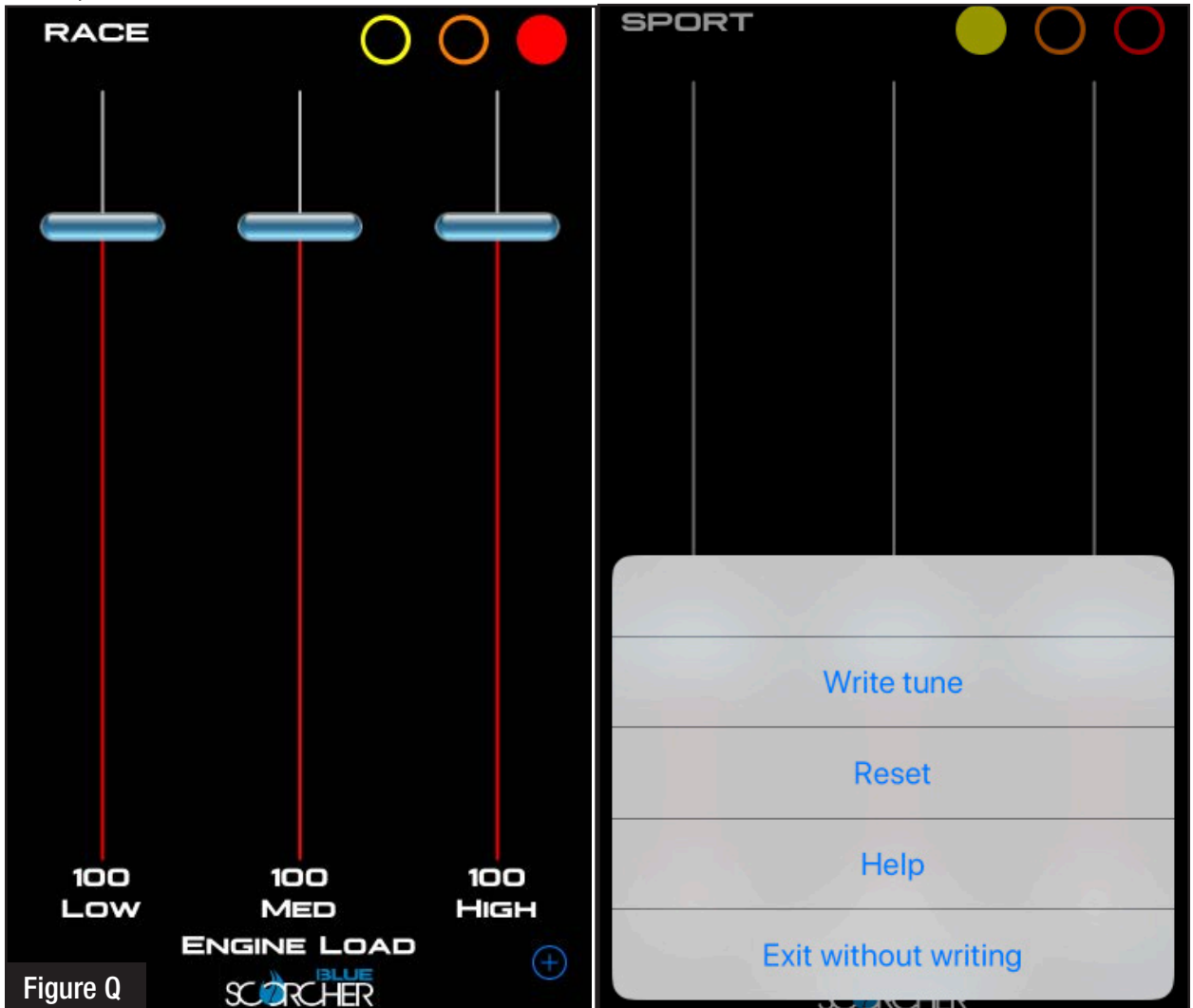


Figure Q

Refer to Figure Q (Custom Tuning).

The aFe POWER SCORCHER BLUE app offers the capability to custom tune the different modes. Go to the menu on the top right corner and select “Tune”. Select the mode you would like to custom tune and adjust the sliders at low, medium and high load. You can either write the tune or exit without writing.



Disclaimer: Custom tuning should only be performed with the ignition in the “run” position and engine off. Configuring the tunes outside the default values may cause drivability issues and /or check engine lights to occur.



Refer to Figure R (Vehicle Performance Screen).

On the gauges screen, swipe to the left to get to the vehicle performance screen. When the vehicle is not moving, select the test you are wanting to attempt (0-60mph, ¼ mile or mile). The app will automatically detect the movement of the vehicle and the timer will start. Once you reach the speed or distance, the timer will stop. If you select a new mode it will reset and you can start again. If you need to stop the test at any point, hit the cancel button and leave the screen.



Use the aFe POWER SCORCHER BLUE app responsibly. Always drive safely and obey traffic laws. aFe POWER is not responsible for any accidents, injuries, or property damage that may occur during its use.

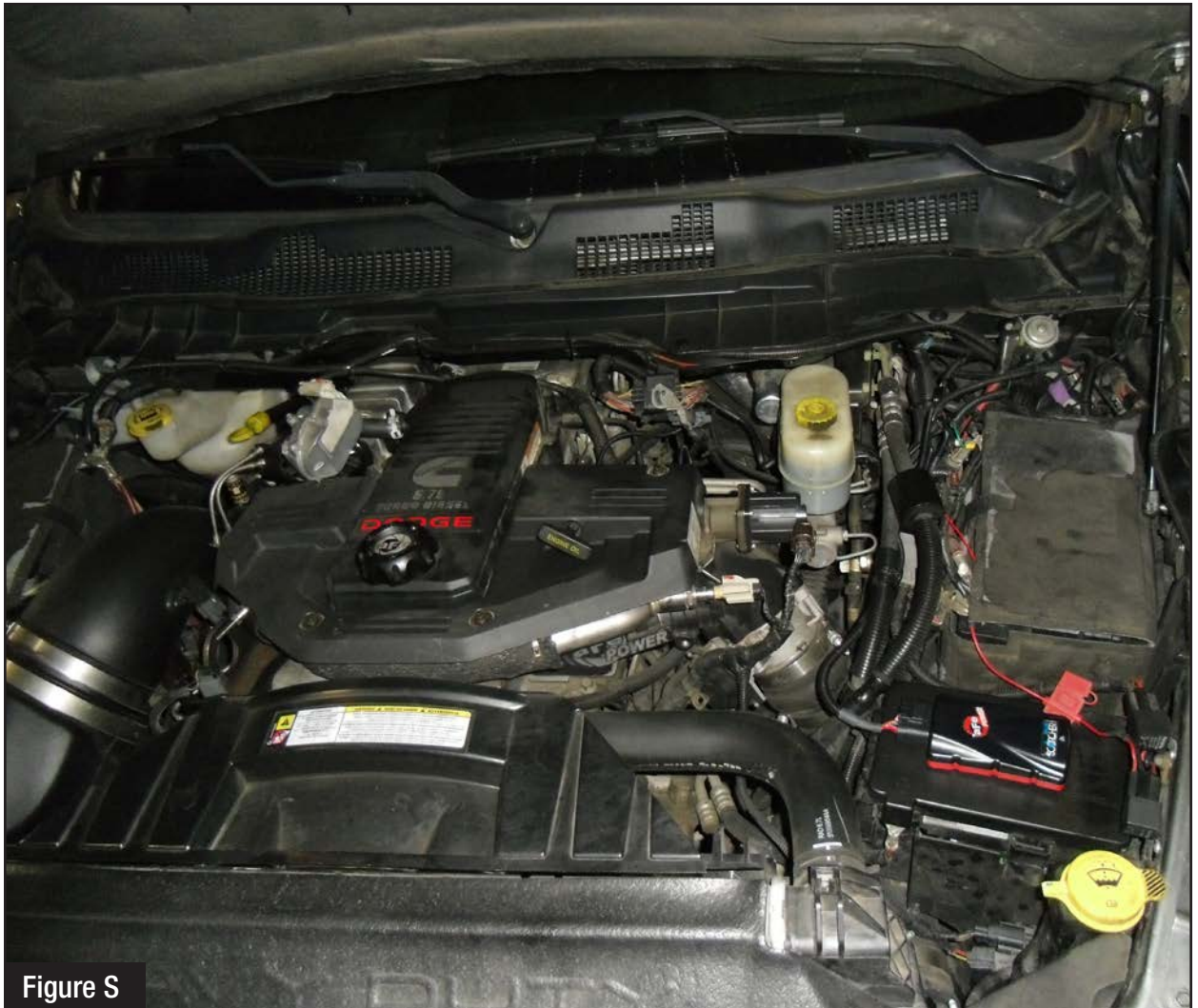


Figure S

Refer to Figure S (Bypass Plug).

A bypass plug is included in the kit. The plug can be connected to the harness instead of the module. Once the bypass plug is connected the vehicle will run in factory settings. Make sure the plug is fully engaged when connected to the harness. Thank you for choosing aFe POWER!

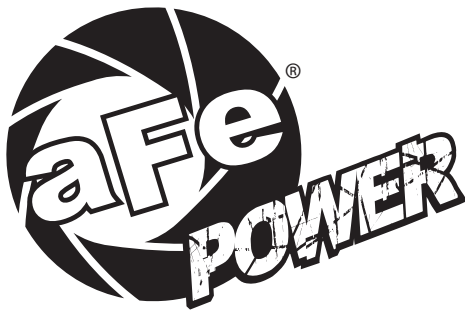


The vehicle needs to be in sleep mode when the module gets disconnected and the bypass plug connected. Wait for the blue LED on the module to stop flashing to make sure the truck is in sleep mode.

**NOTE: Place enclosed CARB EO sticker on or near the device.
EO identification label is required to pass the smog test inspection.**



Page left blank intentionally



advanced FLOW engineering, inc.
252 Granite Street Corona, CA 92879