

Hardware Included

- A. 1 ea. Passenger side wing
- B. 1 ea. Center bumper
- C. 1 ea. Driver side wing
- D. 2 ea. Mounting brackets
- E. 10 ea. M8 x 1.25 x 20mm hex head bolt
- F. 10 ea. M8 flat washer
- G. 10 ea. M8 split washer
- H. 16 ea. M12.1.75x35mm hex head bolt
- I. 32 ea. M12 flat washer
- J. 16 ea. M12 split washer
- K. 16 ea. M12x1.75 hex head nut
- L. 4 ea. M6 x 1x 16mm hex bolt
- M. 4 ea. M6 lock Nut
- N. 4 ea. M6 flat washer

Tools Needed

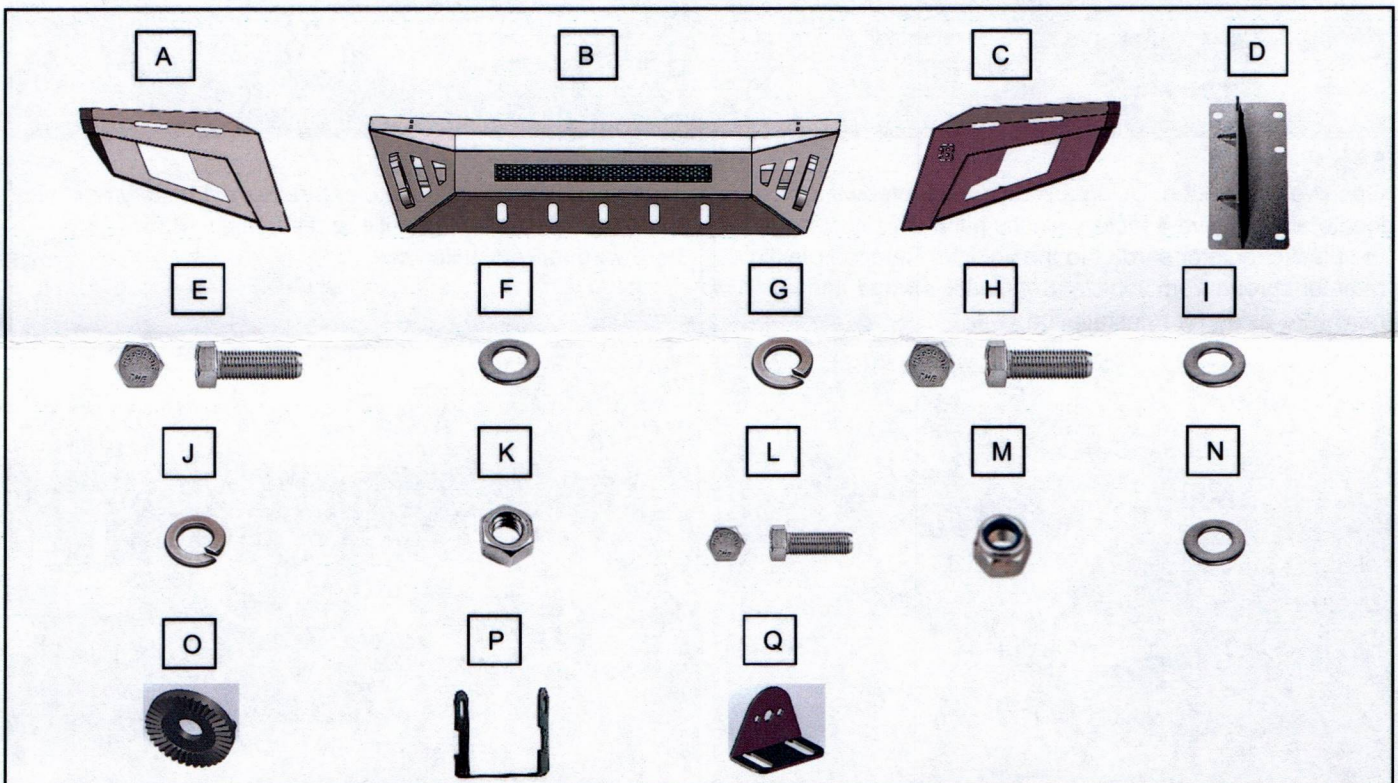
- 18mm socket
- 18mm wrench
- 15mm wrench
- 13mm wrench
- 10mm socket
- Ratchet
- Plastic clip removal tool



Front Bumper Installation Instructions

Fits 19-23 Dodge Ram 2500
Part#: HR42924

- O. 2 ea. Light washer
- P. 2 ea. Cube Light Bracket
- Q. 2 ea. Light Bar Bracket

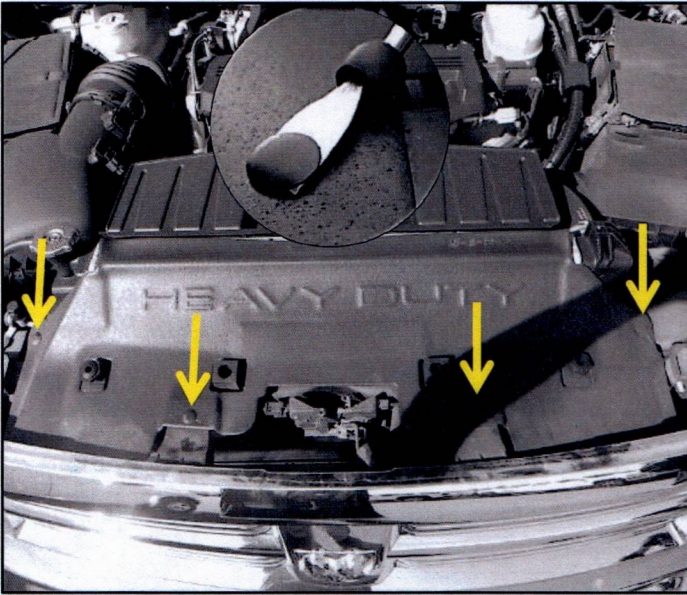


Please take a few minutes to read and thoroughly familiarize yourself with the installation procedures outlined in this manual. Following the steps as outlined will save you time and help reduce mistakes. Once the instructions are reviewed, if you feel that you are not capable of safely installing the parts seek the help of a qualified installation expert to help you complete the job. The manufacture is in no way responsible for any personal injury or vehicle damage that may occur

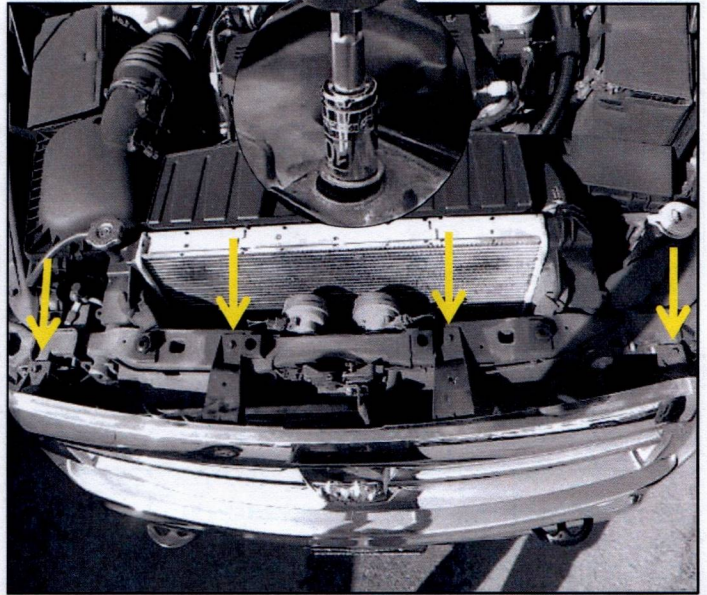
California Proposition 65 Warning!

This product includes a power cord which may contain lead a chemical known to the State of California to cause cancer and birth defects or other reproductive harm. For more information go to www.P65Warnings.ca.gov.

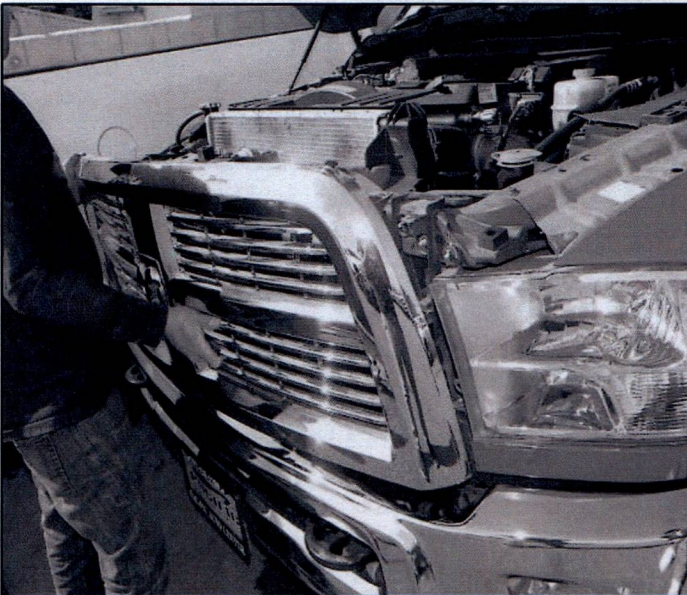
Removing Factory Bumper



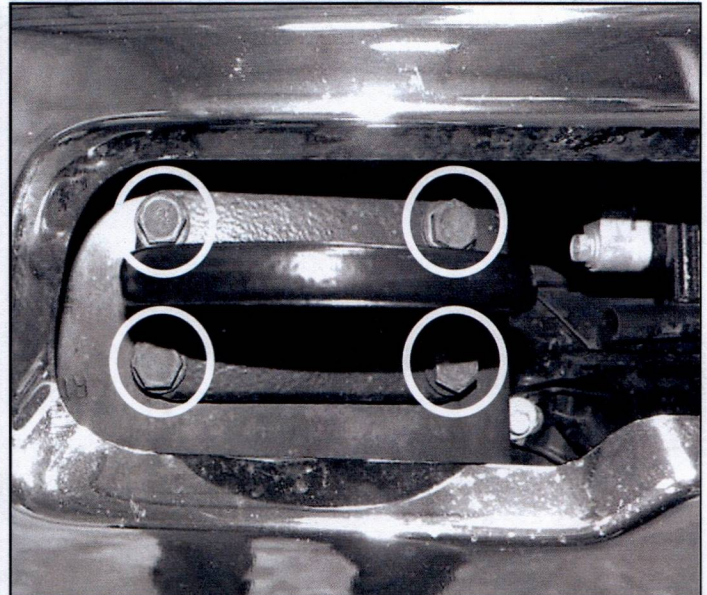
Step 1.
Open vehicles hood. Using a plastic rivet removal tool locate and remove 4 factory plastic push clips securing the plastic radiator shroud to the vehicle. Remove plastic radiator shroud from vehicle. Set plastic shroud and hardware aside for reinstallation.



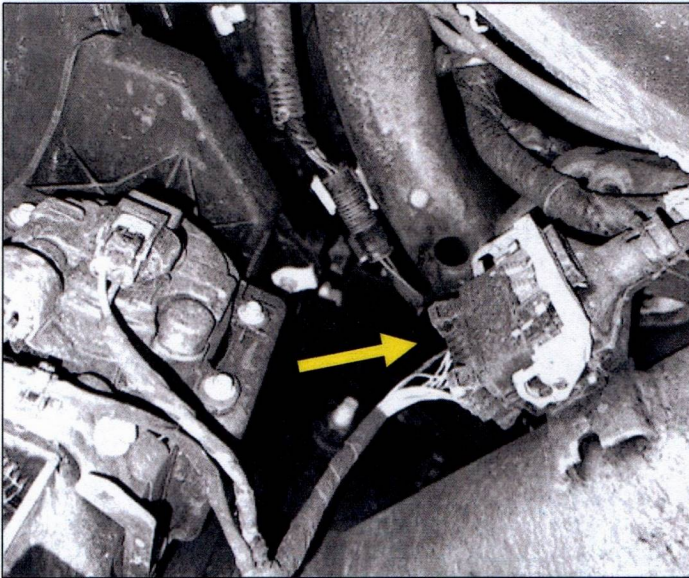
Step 2.
Using a 10mm socket locate and remove 4 factory hex head bolts securing the grille to the vehicle. Save hardware for reinstallation.



Step 3.
Firmly grab and pull factory grille off of vehicle. Set factory grille aside for later use.

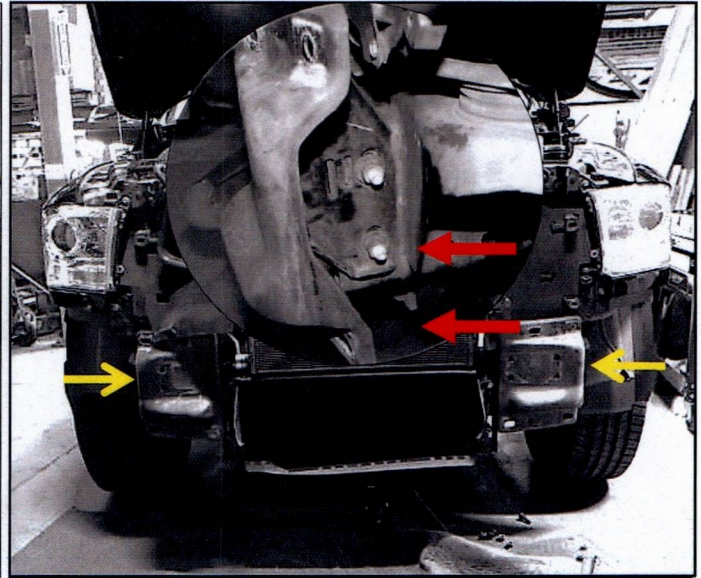


Step 4.
Using 18mm socket and 18mm wrench locate and remove 4 factory bolts holding factory tow hook onto vehicle. Remove factory tow hook from vehicle. Set hardware aside for reinstallation. Discard factory tow hook. Repeat same step for other side factory tow hook.



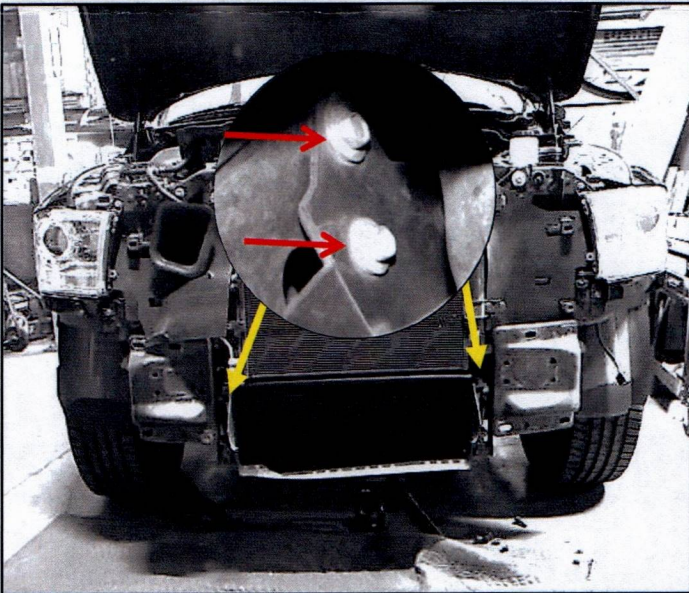
Step 5.
Working underneath the vehicle disconnect the factory harness from the bumper. With help from an assistant remove the factory bumper from the vehicle.

Diesel truck instructions:
The reason it takes additional procedures is because the intercooler is in the way from getting the bolt plate out.

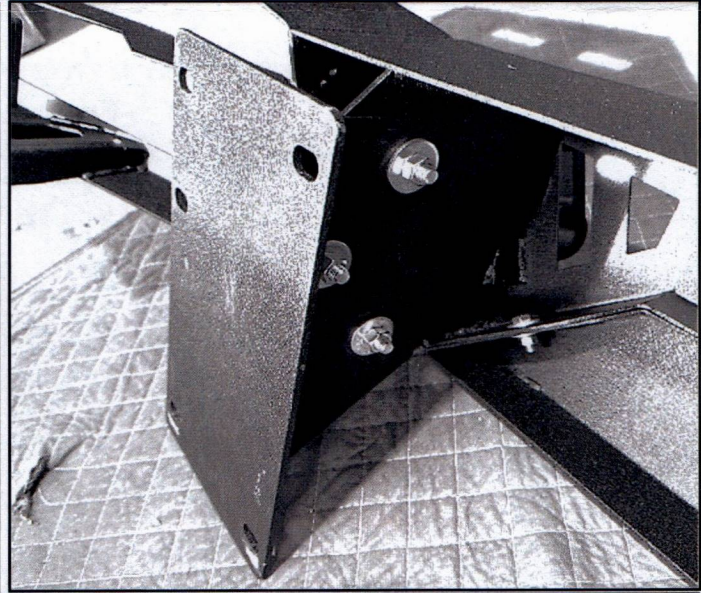


Step 6.
Using a 18mm socket locate and remove 2 factory bolts holding the factory mounting bracket onto vehicle. Remove factory mounting bracket. Discard mounting bracket. Set hardware aside for reinstallation. Repeat step for other side mounting bracket.

Installing Front Bumper

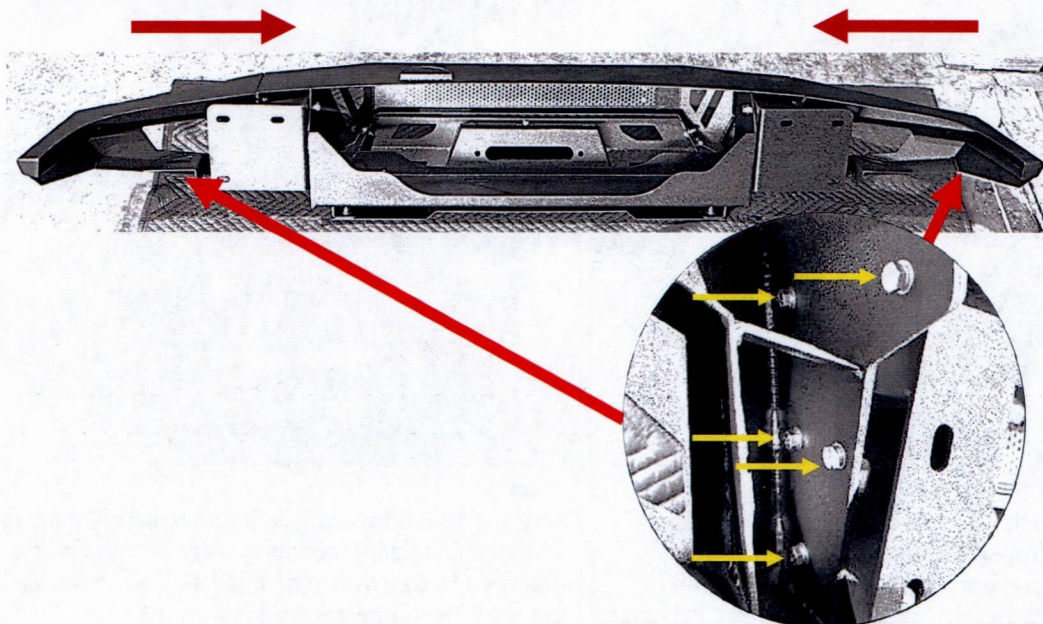


Step 7.
Using a 13mm wrench locate and remove 2 factory bolts holding the intercooler support bracket onto vehicle. Repeat step for other side. Lower the intercooler enough for you to remove the bumper mounting bracket bolts and bracket. Repeat step for other side. Once brackets are removed reinstall the intercooler brackets bolts.



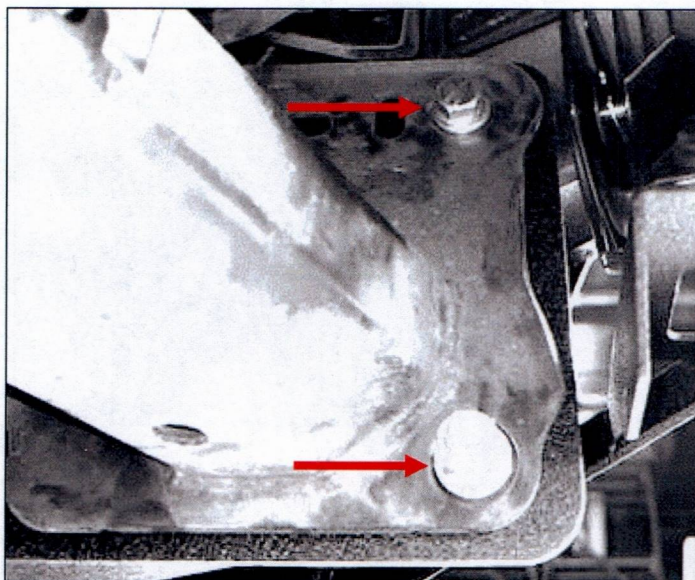
Step 1.
Place supplied driver mounting bracket onto the bumper as shown. Line up the holes in the bracket with the holes in the bumper. Secure mounting brackets onto the bumper using supplied M12 bolt, M12 washers, and M12 hex head nuts. Hand tighten at this time. Repeat step for remaining bolts. Repeat step for other side mounting bracket.

Installing Front Bumper continued



Step 2.

Place your new bumper on a padded work bench to protect the finish. Locate the supplied bumper side wings. Place the side wings onto the bumper. Line up the holes in the bumper wings with the bumper side bolts. Hold in place. Locate ten M8x.1.25 hex head bolt, install bolts through the side wing onto the center bumper. Tighten down hardware using a 13mm wrench. Repeat step for remaining bumper wing. At this time install the winch onto the bumper.



Step 2.

With help from assistance place bumper onto the vehicle. Secure bumper onto vehicle using the supplied M12 nut plat, M12 bolts, M12 washer, & M12 hex head nuts. Repeat step for other side.



Step 4.

Adjust bumper until satisfied with fitment. With all the hardware installed tighten down using a 18mm socket and 18mm wrench. This completes the installation.