



ARMOR GRILLE WITH OFFROAD LED LIGHTING

(2013-2018 2500/3500)

INSTALLATION INSTRUCTIONS

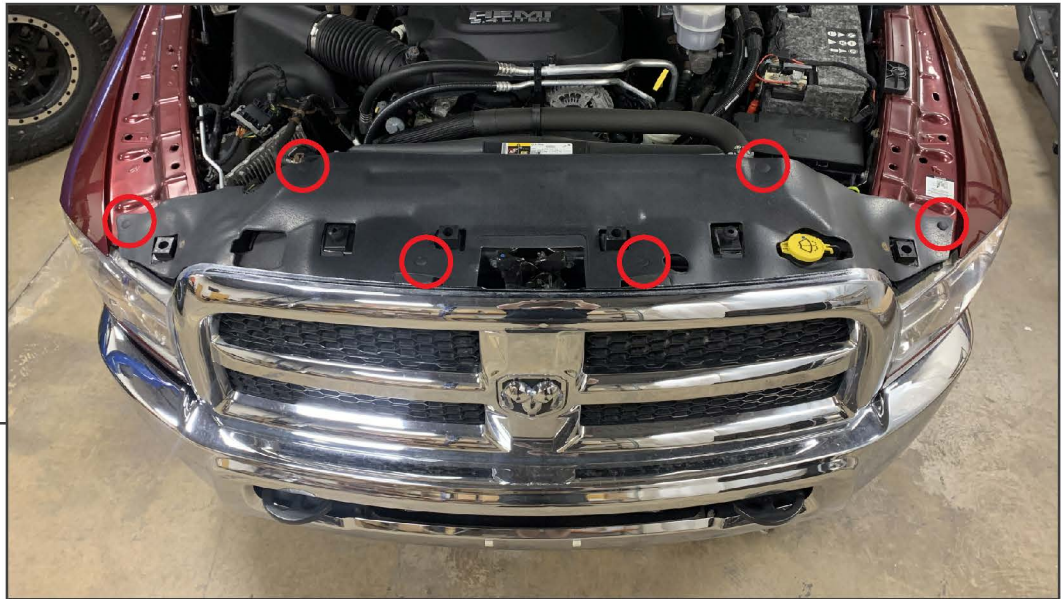
CONTENTS

- (1) Grille
- (1) LH Upper Corner Panel
- (1) RH Upper Corner Panel
- (1) LH Middle Panel
- (1) RH Middle Panel
- (2) Plastic Clips
- (12) Phillips Screws
- (2) Scotchlok Connectors

TOOLS REQUIRED

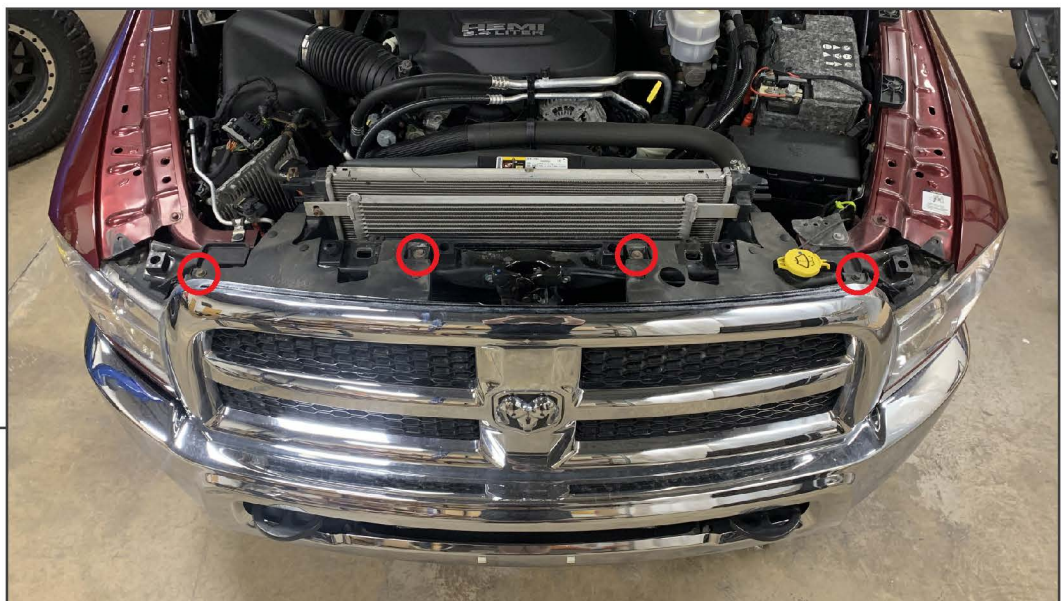
- 10mm Socket
- Ratchet
- Flathead Screwdriver
- Phillips Screwdriver
- Panel Removal Tool

SKU # HR44762



STEP 1

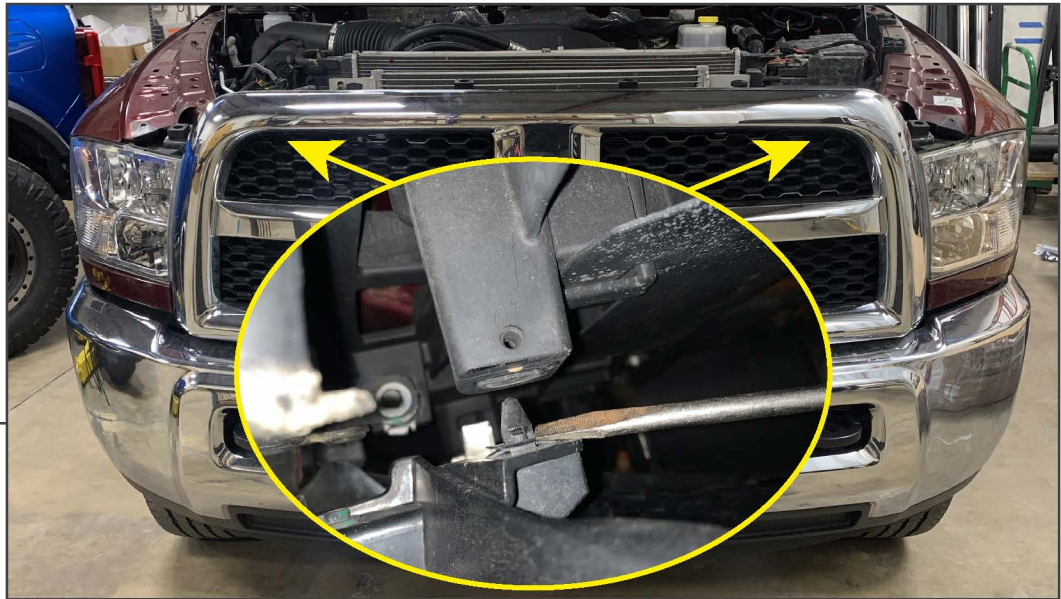
Open the vehicle hood. Remove (6) plastic push clips from the upper radiator cover.



STEP 2

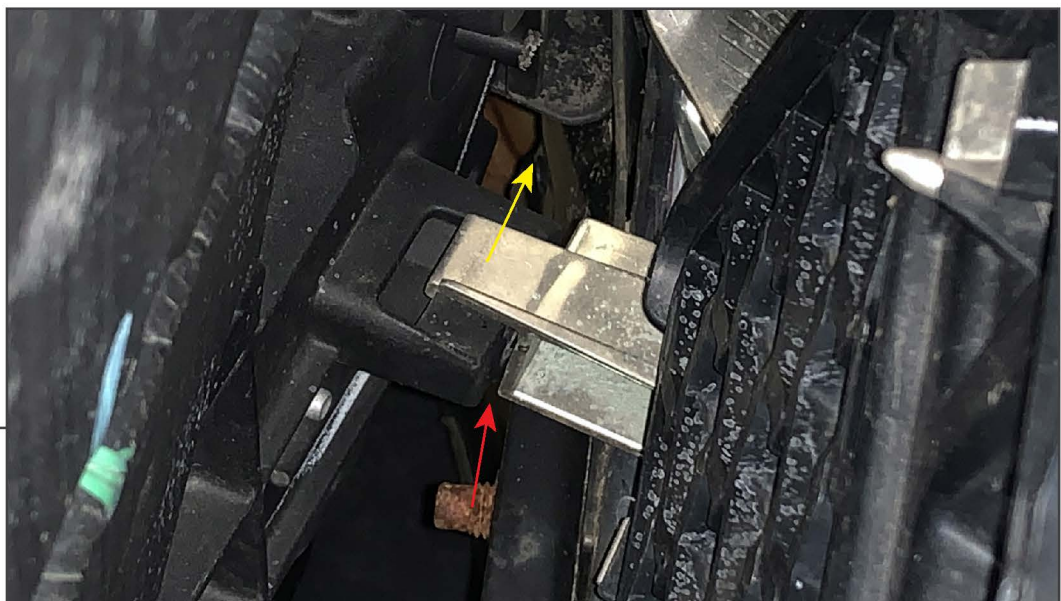
Remove the (4) 10mm bolts from the top of the grille assembly. Hardware will be reused.

Note: The middle (2) 10mm bolts are fine threaded, while the (2) outer 10mm bolts are coarse thread.



STEP 3

Using a flathead screwdriver, gently pry/twist to dislodge the (2) upper grille retaining clips.



STEP 4

Using a flathead screwdriver while gently pulling the grille outwards, lift the hook over the grille retainer on both sides. Once unhooked, dislodge the plastic clip below the hook on both sides to dislodge the grille from the vehicle. Remove the grille from the vehicle.

STEP 5



Secure each appropriate upper corner mounts using (4) Phillips screws per mount.

STEP 6

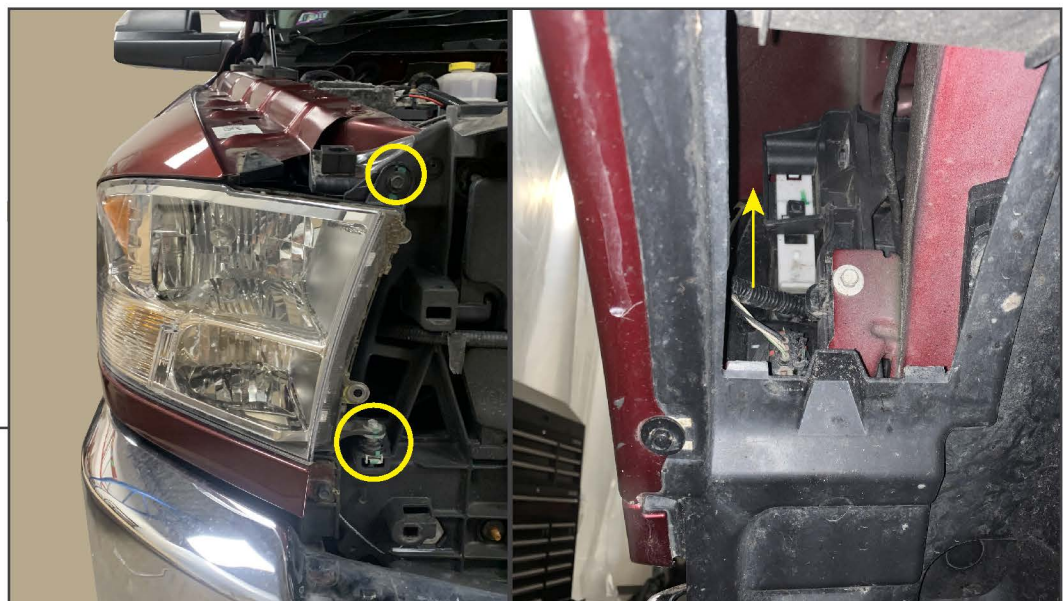


Secure each appropriate upper center mounts using (2) Phillips screws per mount.



STEP 7

Install the (2) included retaining clips into the lower brackets.



STEP 8

Remove the (2) 10mm bolts from the front of the RH side headlight. Through the access port in the wheel well, lift the white headlight release to dislodge the headlight, then pull the headlight away to reveal the wiring.



STEP 9

Locate the parking light wiring harness. Splice into the parking light harness with the included (2) scotchlok connectors, using the diagram below. Once spliced, re-install the headlight.

Vehicle Parking Light Wiring	-	Grille Lighting
White/Orange Stripe (+)	-	Red (+)
Black (-)	-	Black (-)



STEP 10

Align the top of the new grille to the radiator support first, then clip in the lower (2) clips. Secure the grille reusing the original hardware (Close hood and check fitment, adjust as necessary). Re-install the original radiator cover using the original push clips.

Installation is now complete.