



3” FRONT LEVELING KIT

(2014-2023+ 2500 4x4 ; Excluding Power Wagon)

INSTALLATION INSTRUCTIONS

CONTENTS

(2) Upper Spring Spacers
(2) Shock Absorber Brackets
(2) M14 x 1.50 x 80mm Hex Bolts
(4) M14 Flat Washers
(2) M14 Lock Nuts
(4) M10 x 1.50 x 30mm Hex Bolts
(4) M10 Flat Washers
(4) M10 Nuts

TOOLS REQUIRED

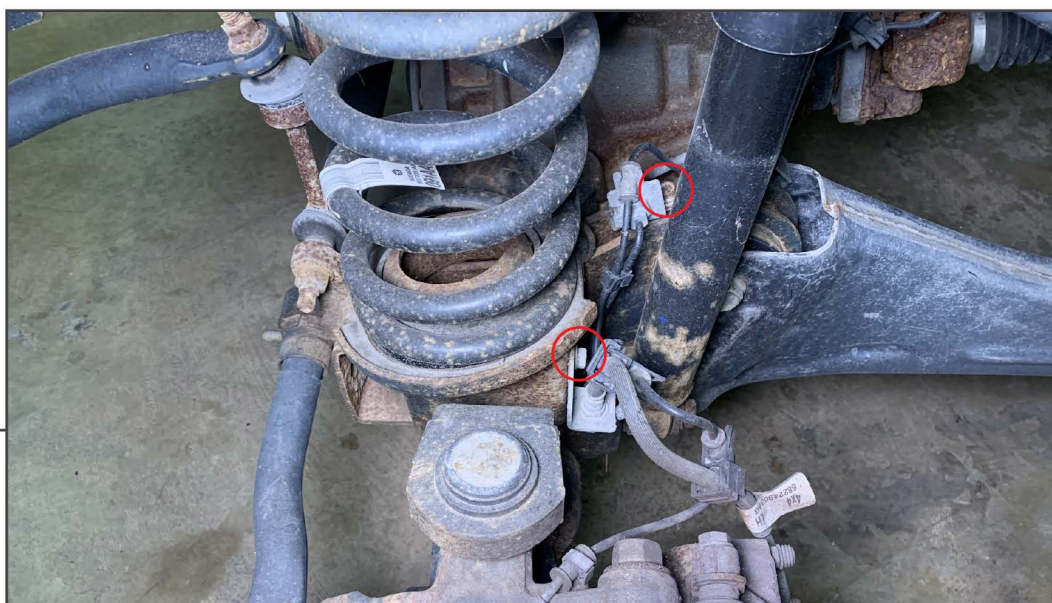
10mm, 13mm, 15mm, 16mm,
21mm, 22mm Sockets/Wrenches
Socket Extension/Swivel
Ratchet
Drill & 13/32” Drill Bit
Pry Bar
Floor Jack
Jack Stands



STEP 1

Safely lift and support the vehicle using a floor jack and jack stands. Remove the front wheels from the vehicle.

Place a floor jack under the front axle differential, and jack up to apply light pressure to the axle assembly.



STEP 2

Remove (2) 13mm bolts from the brake line retainers on the axle.

Repeat this step for the opposite side of the vehicle.

Note: OEM bolts will be reused during assembly.

STEP 3

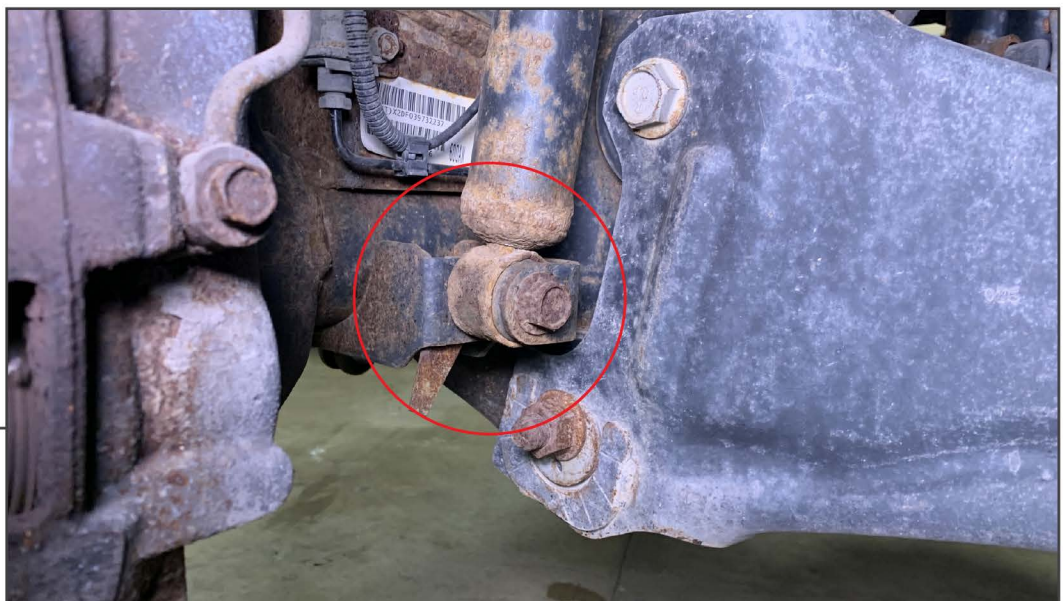


Remove (1) 21mm nut to disconnect the sway bar link from the axle.

Repeat this step for the opposite side of the vehicle.

Note: OEM nut will be reused during assembly.

STEP 4



Remove (1) 21mm bolt to disconnect the bottom of the shock absorber from the axle.

Repeat this step for the opposite side of the vehicle.

Note: OEM bolt and flag nut will be reused during assembly.

STEP 5

Lower the floor jack slowly to relieve tension from the coil springs. Remove the coil springs and the upper spring isolators from the vehicle.

STEP 6

Mount the upper spring spacer to the vehicle frame using (1) M10 x 30mm bolt, (1) M10 flat washer, and (1) M10 nut through the vehicle pre-drilled frame hole. Using a drill and a 13/32" drill bit, drill the additional bolt hole through the vehicle frame. If necessary, use a marker to locate the hole location, remove the spacer, then drill the hole. **Some vehicles have the ABS module above the Driver's side frame, take care to the above components while drilling.

Repeat this step for the opposite side of the vehicle.

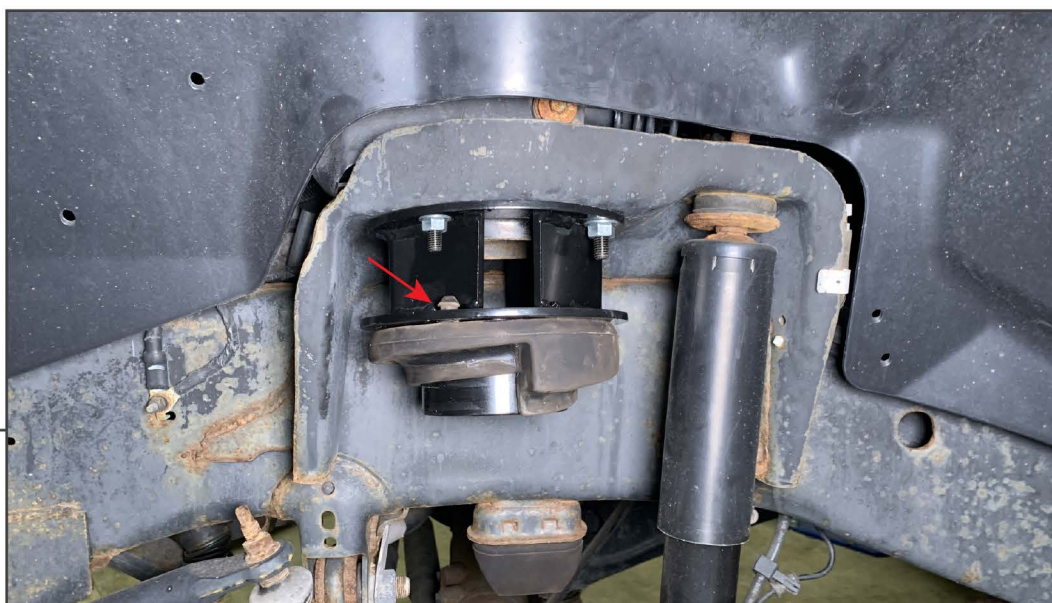
STEP 7



Once drilled, re-mount the upper spring spacer using (2) M10 x 30mm bolts, (2) M10 flat washers, and (2) M10 nuts. Tighten each bolt evenly until the spacer is fully secure to the frame.

Repeat this step for the opposite side of the vehicle.

STEP 8



Install the upper spring isolator to the upper spring spacer using the dowel pin on the isolator as the alignment guide.

Repeat this step for the opposite side of the vehicle.



STEP 9

Mount the shock absorber mounting bracket to the shock absorber axle mount using the OEM bolt and flag nut.

Note: The bolt hole/slot is offset. Ensure the bolt hole/slot is fitted closer to the center of the vehicle.

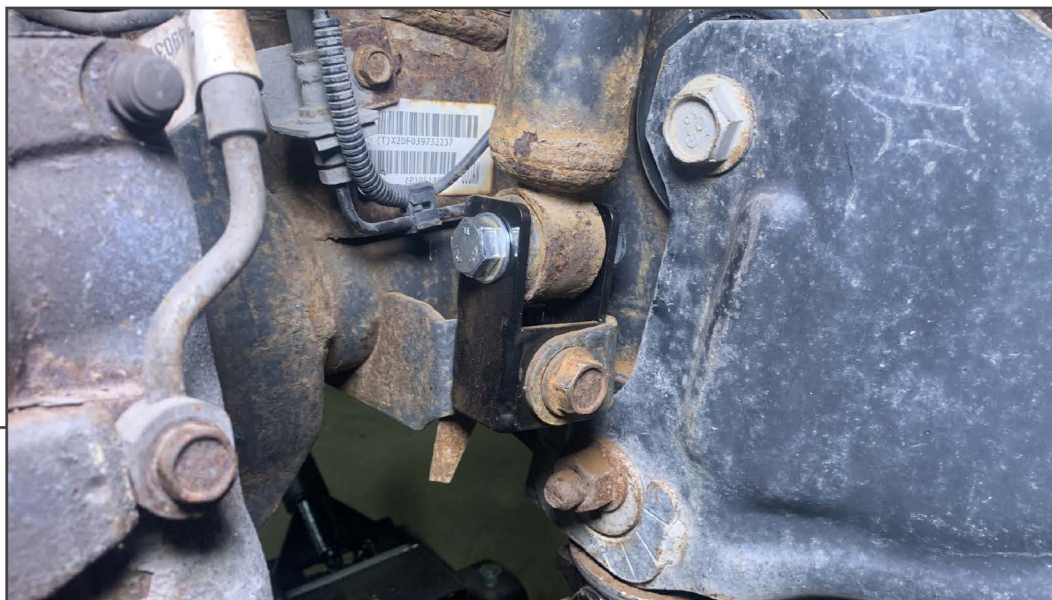


STEP 10

Fit the coil spring in-between the axle mount and the frame, ensuring the coil spring isolators are properly in place. Lift the axle upwards to apply pressure to the springs.

Note: While lifting the axle, ensure the brake lines & shock absorbers are properly aligned to fit to the mounting points.

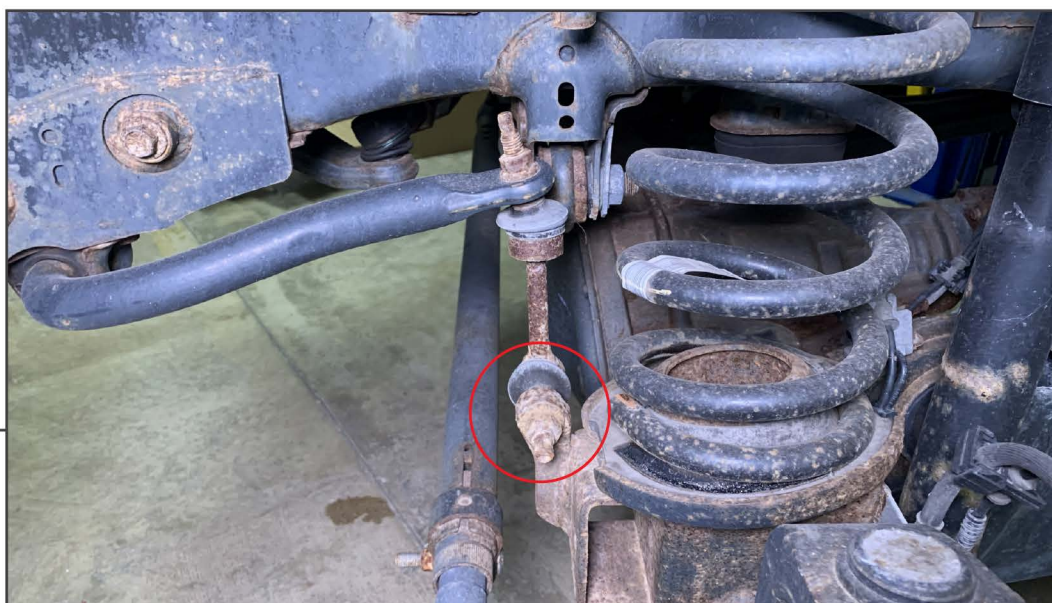
STEP 11



Twist the shock base 90 degrees, and secure the shock absorber into the previously mounted bracket using (1) M14 x 80mm bolt, (2) M14 flat washers, and (1) M14 lock nut. Tighten the shock until fully secure.

Repeat this step for the opposite side of the vehicle.

STEP 12



Secure the sway bar link to the axle using the original (1) 21mm nut. Tighten until fully secure.

Repeat this step for the opposite side of the vehicle.

STEP 13



Secure the brake lines to the axle using the original (2) 13mm bolts. Massage the brake lines as necessary for best fit if necessary.

Repeat this step for the opposite side of the vehicle.

STEP 14



Installation is now complete.

Professional wheel alignment is highly recommended to ensure proper tire wear. Periodically check all fasteners for proper torque every 3,000 miles.