



DUAL STEERING STABILIZER

(2014-2021 2500)

(2013-2021 3500)

INSTALLATION INSTRUCTIONS

CONTENTS

(2) Stabilizer Shocks
(1) Axle Bracket
(1) Axle Clamp Bracket
(2) Tie Rod Brackets
(4) 3/8-16 U-Bolts
(8) 3/8-16 Flange Nuts
(4) 1/2-13 x 2.75"
(8) 1/2 Flat Washers
(4) 1/2-13 Lock Nuts

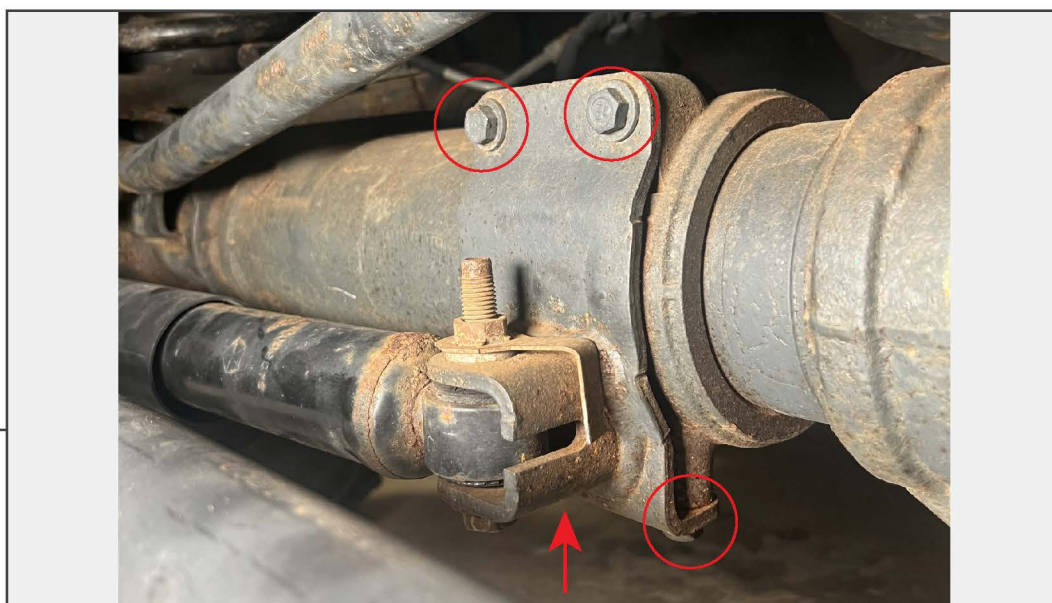
TOOLS REQUIRED

13mm, 14mm, 18mm, 19mm
Sockets
19mm Wrench
Ratchet
Pry Bar
Floor Jack
Jack Stands

SKU # HR46006

STEP 1

Locate the original vehicle steering stabilizer. Remove the steering stabilizer bracket from the tie rod by removing the (2) 18mm bolts/nuts, and use a pry bar to remove the mounting bracket and stabilizer from the tie rod.

STEP 2

Remove (4) 13mm bolts from the steering stabilizer mounting bracket attached to the front axle tube. Remove the original steering stabilizer assembly from the vehicle.

Note: The (4) 13mm bolts will be reused during the dual steering stabilizer installation.

STEP 3



Fit and secure the included axle mounting bracket to the original steering stabilizer bracket mount on the axle tube using the original (4) 13mm bolts.

STEP 4



Loosely secure the included (2) tie rod brackets to each side of the vehicle tie rod using (2) 3/8-16 U-bolts and (4) 3/8-16 flange nuts per bracket.

With both brackets loosely fitted, measure the distance between the center bracket bolt hole and the tie rod bracket for each side. Each side will measure approximately 18". Once spaced properly, tighten the tie rod brackets into place.

STEP 5

Fit each stabilizer shock to the center mounting bracket. Use the (1) axle clamp bracket under the stabilizer shocks, and secure into place using (1) 1/2-13 x 2.75" bolt, (2) 1/2" flat washers, and (1) 1/2" lock nut per stabilizer shock.

STEP 6

Align the stabilizer shock to the previously mounted tie rod bracket. Secure the stabilizer shock to the bracket using (1) 1/2-13 bolt, (2) 1/2 flat washers, and (1) 1/2-13 lock nut. Tighten until secure.

Repeat this step for the opposite side of the vehicle.



STEP 7

With the vehicle on the ground, turn the wheel lock to lock to verify the stabilizer shocks are the correct length. Adjust the stabilizer mounting points, if necessary to allow full shock travel/compression.

Once adjusted, tighten all steering stabilizer assembly mounting hardware.

Installation is now complete.