

FRONT BUMPER MOUNTED 20-INCH LED LIGHT BAR AND BRACKET

(2010-2018 2500 / 3500)

INSTALLATION INSTRUCTIONS

CONTENTS

(1) LED Light Bar
(1) Wiring Harness
(2) Mounting Brackets
(8) M12x1.75 x 45mm Bolts
(16) M12 Flat Washers
(8) M12 Lock Nuts
(2) M8x1.25 x 20mm Cap Head
Allen Bolts
(2) M8 Lock Washers
(2) M8 Flat Washers
(1) 6mm Allen Key

TOOLS REQUIRED

19mm, 20mm, 21mm
Socket/Wrench
Ratchet
6mm Allen Key



STEP 1

Locate and remove (4) 19mm bolts and nuts from each vehicle recovery hook. Remove the recovery point from the vehicle temporarily.

Repeat this step for the opposite side of the vehicle.



STEP 2

Fit the included light bar mounting bracket to the vehicle, then place the vehicle recovery point over the light bar mounting bracket. Loosely secure the bracket and recovery point using (4) M12 x 45mm bolts, (8) M12 flat washers, and (4) M12 lock nuts. Allow the assembly to remain loose at this time to allow for later adjustments.

Repeat this step for the opposite side of the vehicle.

STEP 3



Fit the light bar between the mounting brackets, ensuring the wiring harness lead is on the driver side of the vehicle.

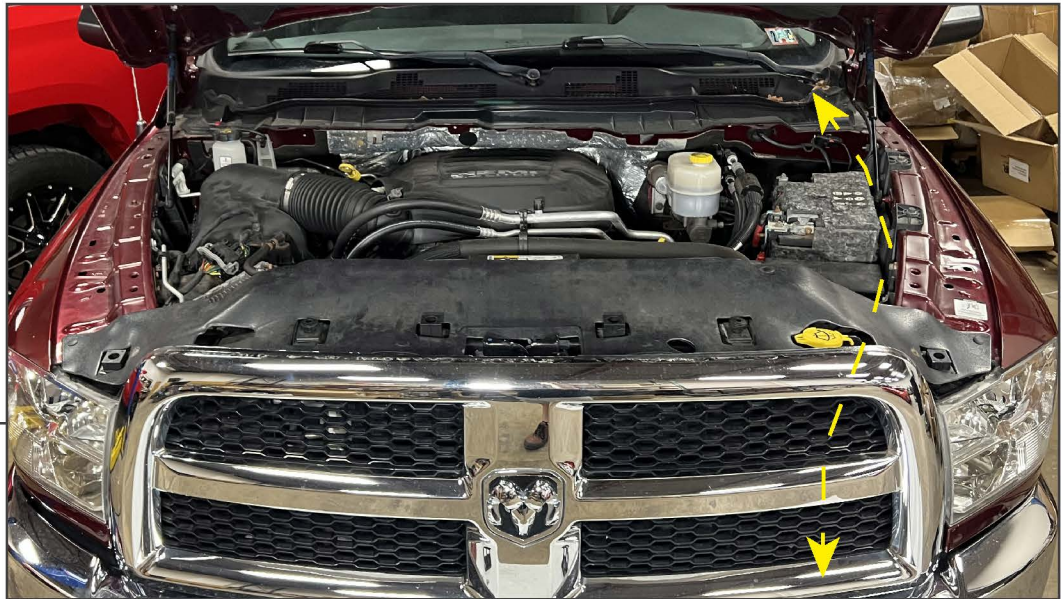
Adjust the brackets to touch the light bar, and secure the light bar to the mounting brackets using (2) M8 x 20mm Allen bolts, (2) M8 lock washers, and (2) M8 flat washers.

STEP 4



Center the light bar to the vehicle, and fully tighten the recovery points into place to lock the light bar alignment.

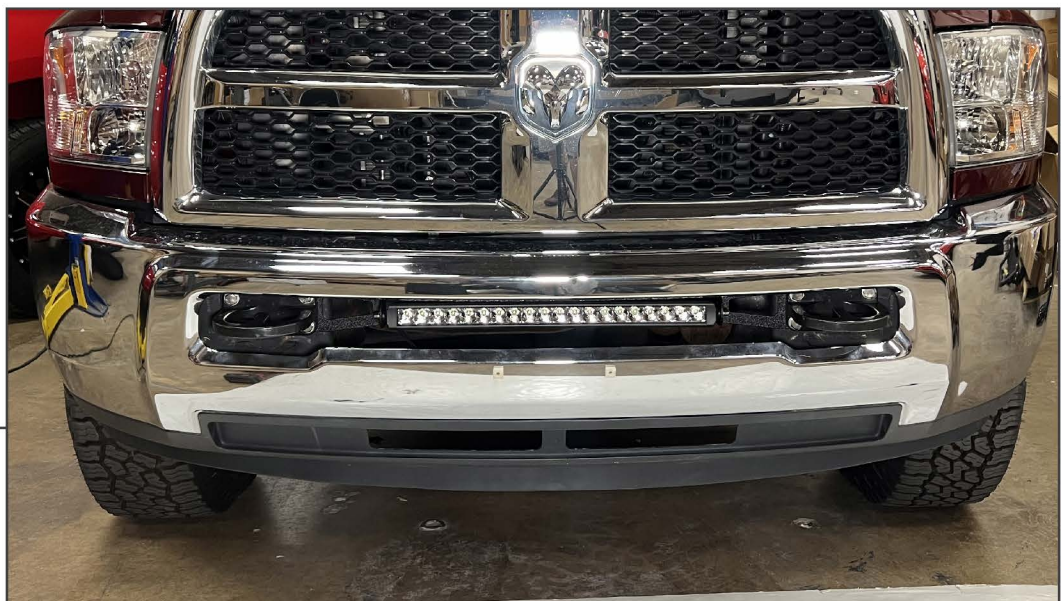
STEP 5



Carefully route the wiring harness across the vehicle.

- Plug the light bar into the harness connector.
- Route switch into vehicle through suitable firewall grommet. Secure switch to dashboard.
- Connect Red ring terminal to battery +.
- Connect Black ring terminal to battery -.
- Mount relay to a secure location.

STEP 6



Test the light bar, and adjust the light bar for best lighting output. Tighten the light bar adjusting hardware once properly adjusted.

Installation is now complete.