

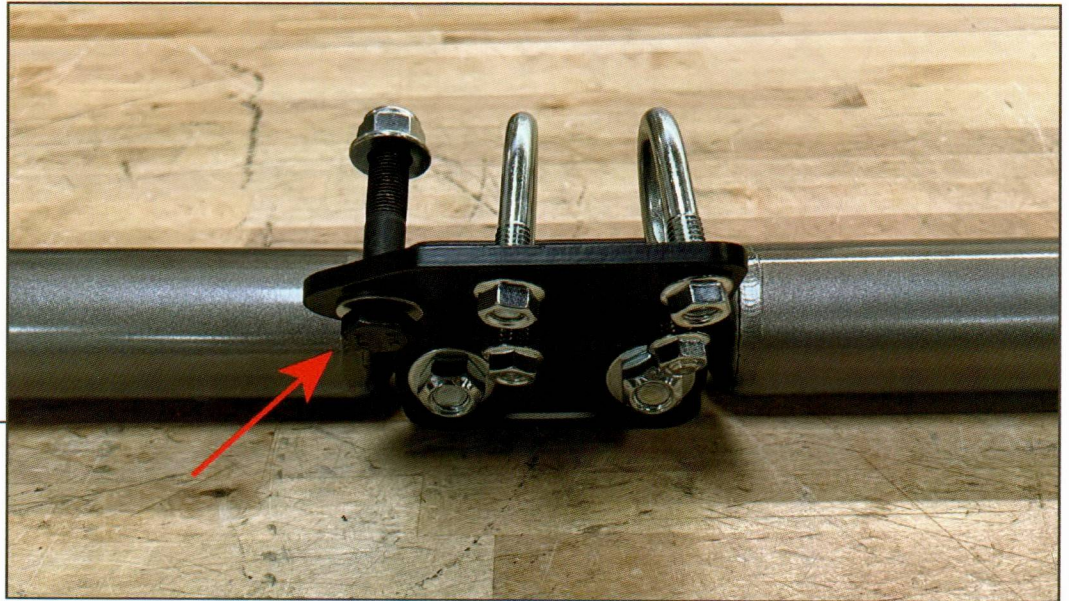
## STEP 5

Fit the stabilizer shocks to the LH and RH mounting brackets using the included 1/2-13 x 2.5" bolts, flat washers, and lock nuts. Then, secure the stabilizer shocks to the center bracket using the remaining flat bracket and (2) 1/2-13 x 2.5" bolts, flat washers, and lock nuts. The stabilizer shocks will be in between the tie rod bracket and the flat bracket.

Note: Depending on vehicle model/trim, turning the tie rod adjustment collars, or mounting the stabilizer shock ends above/under the bracket may be necessary. The stabilizer shocks must be as parallel to the tie rod as possible for proper fitment.

Once clearance is confirmed, tighten all hardware to secure the stabilizer assembly into place. Test the steering lock-to-lock at vehicle ride height, adjust as necessary.

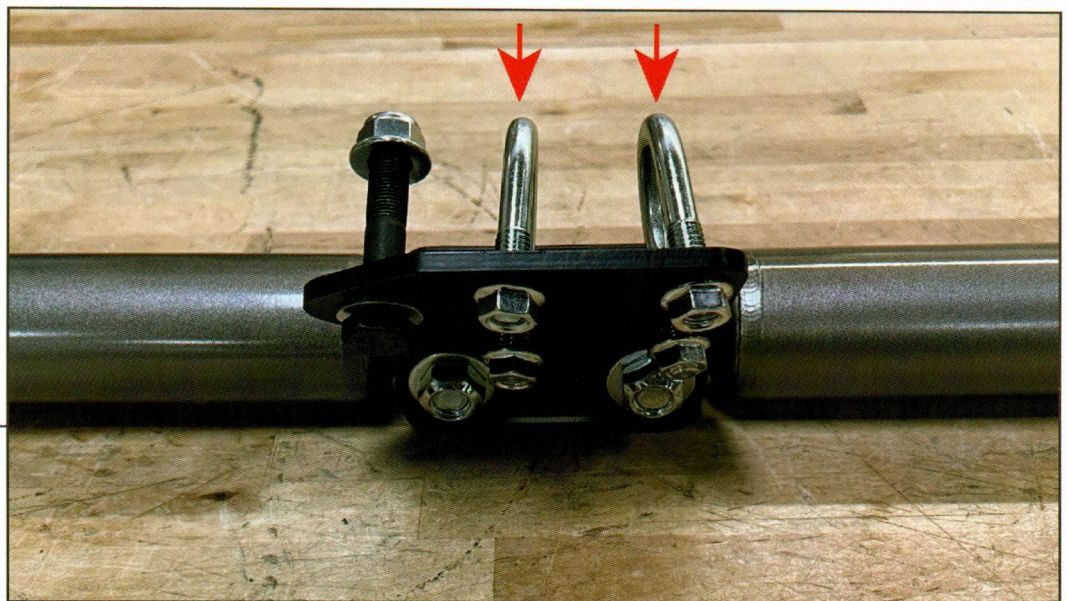
Installation is now complete.



**STEP 3**

Remove the OEM steering stabilizer from the vehicle.

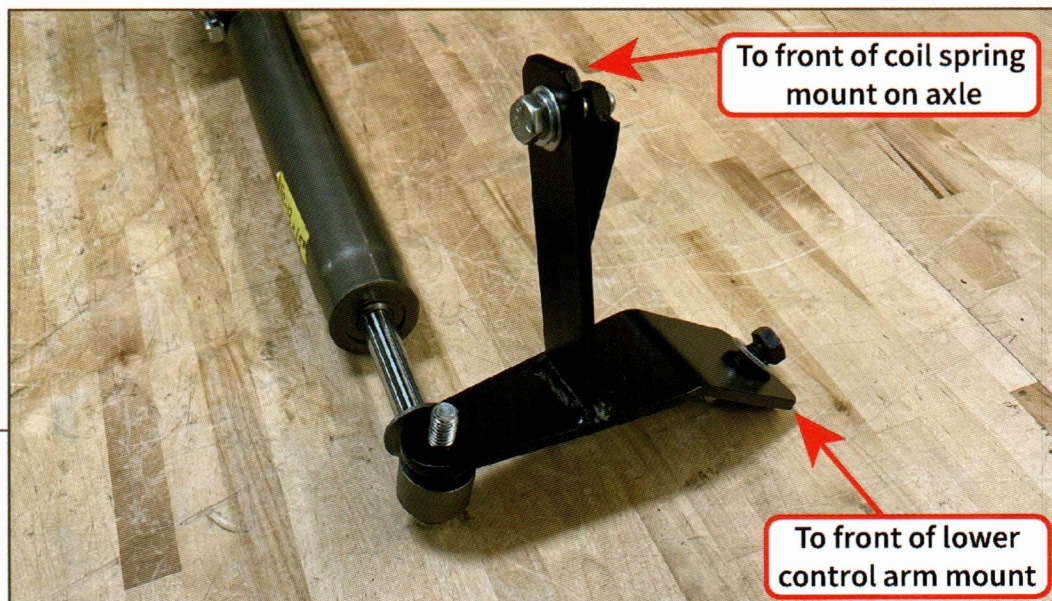
If the tie rod has a hole for a stabilizer, loosely fit the center mounting bracket to the included M12x1.25 x 65mm bolt, washer, and lock nut. If the hole is not present, only the U-Bolts will secure the bracket.



**STEP 4**

Loosely secure the mounting bracket to the tie rod using the included U-Bolts and flange nuts.

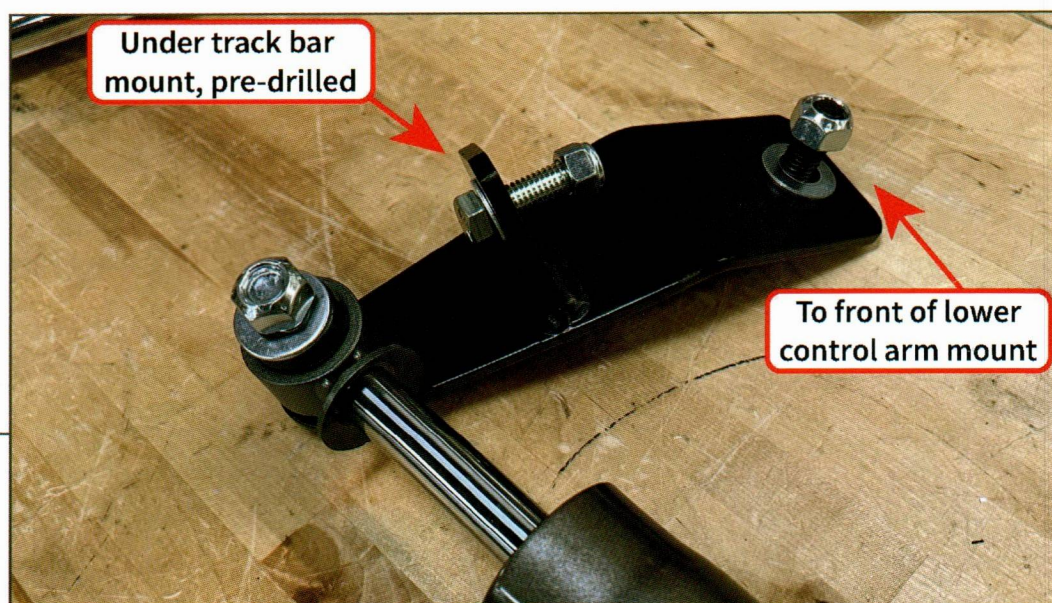
**STEP 1**



**Driver Side of Vehicle:** Locate the LH mounting bracket, and position the bracket to the vehicle axle and mark the bolt holes with a marker to prepare for drilling. Drill each bolt hole using a 1/2" drill bit.

Coil Spring Mount Hardware: 7/16-14 x 1.5" Bolt, Lock Washer, Flat Washer, & Nut Plate  
LCA Mount Hardware: 1/2-13 x 1.5" Bolt, Flat Washers, & Lock Nut

**STEP 2**



**Passenger Side of Vehicle:** Locate the RH mounting bracket, and position the bracket to the vehicle axle and mark the lower bolt hole with a marker to prepare for drilling. Drill the hole using a 1/2" drill bit.

Track Bar Mount Hardware: 7/16-14 x 1.5" Bolt, Lock Washer, Flat Washer, & Lock Nut  
LCA Mount Hardware: 1/2-13 x 1.5" Bolt, Flat Washers, & Lock Nut



---

# DUAL STEERING STABILIZER

(2010-2013 2500)

(2010-2012 3500)

---

## INSTALLATION INSTRUCTIONS

### CONTENTS

---

- (2) Stabilizer Shocks
- (1) LH Mounting Bracket
- (1) RH Mounting Bracket
- (1) Center Bracket
- (1) Clamp Bracket
- (4) 1/2-13 x 2.5" Bolts
- (2) 1/2-13 x 1.5" Bolts
- (12) 1/2 Flat Washers
- (6) 1/2 Lock Nuts
- (2) 7/16-14 x 1.5" Bolts
- (2) 7/16 Lock Washers
- (2) 7/16 Flat Washers
- (1) 7/16 Nut Plate
- (1) 7/16 Lock Nuuts
- (2) 3/8-16 U-Bolts
- (4) 3/8-16 Flange Nuts
- (1) M12x1.25 x 65mm Bolt
- (1) M12 Flat Washer
- (1) M12 Flange Nut

### TOOLS REQUIRED

---

- Socket & Wrench Set
- Drill & 1/2" Drill Bit

SKU # HR59330