

LDS SERIES LED TAIL LIGHTS

(2009-2018 1500 - WITHOUT OEM LED TAIL LIGHTS)
(2010-2018 2500/3500 - WITHOUT OEM LED TAIL LIGHTS)

INSTALLATION INSTRUCTIONS

CONTENTS

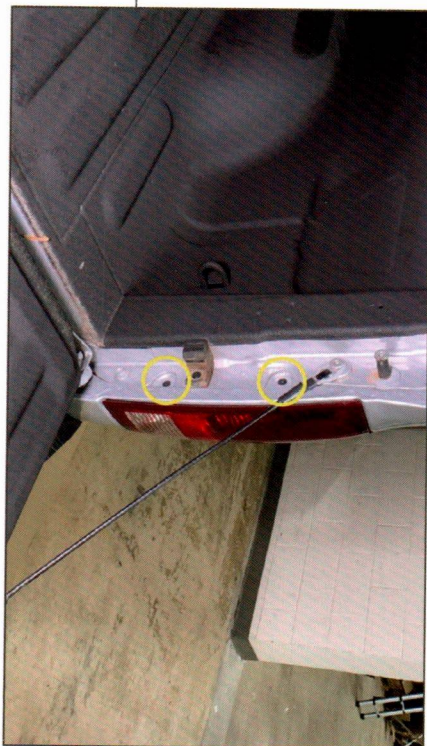
- (1) LH Tail Light
- (1) RH Tail Light
- (2) Resistor Brackets
- (4) Vampire Clips
- (4) M4 Bolts
- (4) M4 Nuts
- (2) Alignment Pins

TOOLS REQUIRED

- Phillips Screwdriver
- Adjustable Wrench
- Pliers

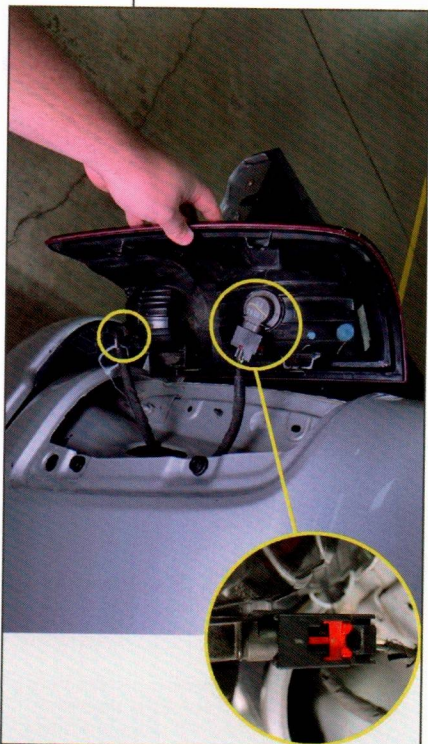
SKU # R197378

STEP 1



Lower the vehicle tailgate. Remove (2) Phillips head screws from the side of the tail light assembly.

STEP 2



Firmly pull the tail light towards the rear of the vehicle to dislodge the (2) alignment pins. Unplug the upper and lower electrical connectors from the tail light by depressing the plastic tab. Remove the tail light from the vehicle.

Note: The upper connector requires sliding the red locking tab prior to pressing the release tab.



STEP 3

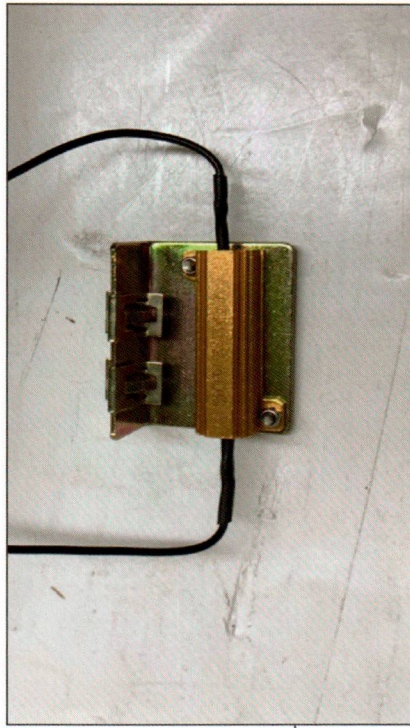
Mount the resistors to the resistor brackets using the supplied hardware. Hold the M4 nut with an adjustable wrench/pliers while tightening the bolts using a Phillips head screwdriver.



STEP 5

Remove the (2) original tail light alignment pins from the side of the bed, and install the included (2) alignment pins.

Secure the resistor bracket to the vehicle using the (2) vampire clips.



STEP 4

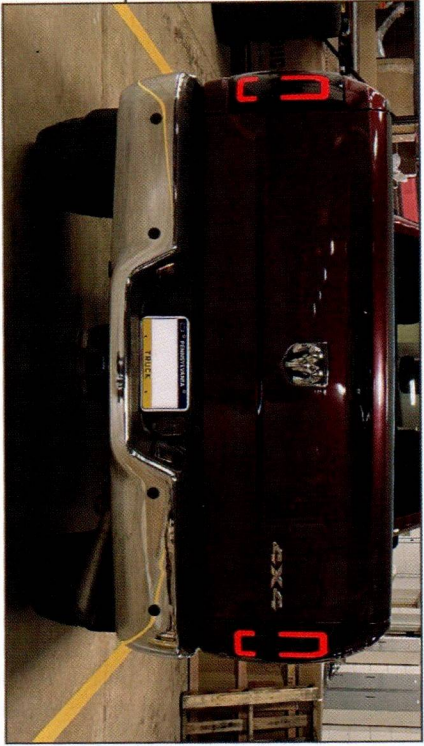
Using (2) vampire clips per bracket, clip each resistor bracket to the vehicle.



STEP 6

Plug in the two vehicle tail light electrical connectors to the new tail light.

Secure the tail light to the vehicle by aligning the (2) alignment pins, then install the (2) original Phillips head screws into the side of the new tail light.



STEP 7

Repeat Steps 1-6 to the opposite side of the vehicle.

Installation is now complete.