



HD MODULAR FRONT BUMPER

(2010-2018 2500 / 3500)

INSTALLATION INSTRUCTIONS

CONTENTS

(1) Bumper	(2) M8x1.25 x 25mm Bolts
(2) LH/RH LED Light Enclosures	(2) M8x1.25 x 16mm Bolts
(2) LH/RH Mesh Panels	(4) M8 Lock Washers
(1) Center Mesh Panel	(6) M8 Flat Washers
(1) License Plate Bracket w/ Screw Inserts	(2) M8 Nuts
(1) LED Lighting Kit	(2) M6x1.00 x 20mm Allen Bolts
(1) LED Light "L" Brackets	(14) M6x1.00 x 20mm Combo Allen Bolts
(6) Proximity Sensor Install Kits	(4) M6 Flat Washers
(6) Proximity Sensor Extension Harnesses	(2) M6 Lock Nuts
(8) M12x1.75 x 50mm Bolts	(10) M6 Flange Nuts
(8) M12 Lock Washers	(1) 5mm Allen Key
(16) M12 Flat Washers	(10) Cable Ties
(8) M12 Nuts	
(4) M10x1.50 x 30mm Bolts	
(4) M10 Lock Washers	
(4) M10 Flat Washers	

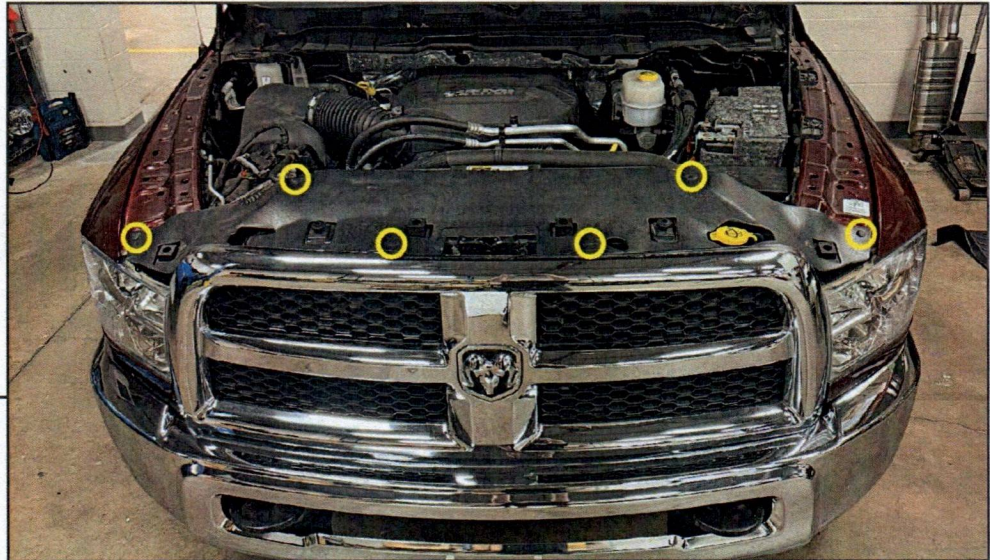
TOOLS REQUIRED

10, 16, 18, 24mm Socket/Wrench
Ratchet
Panel Removal Tool
Long Pry Tool
5mm Allen Key (Provided)

SKU # HR66576

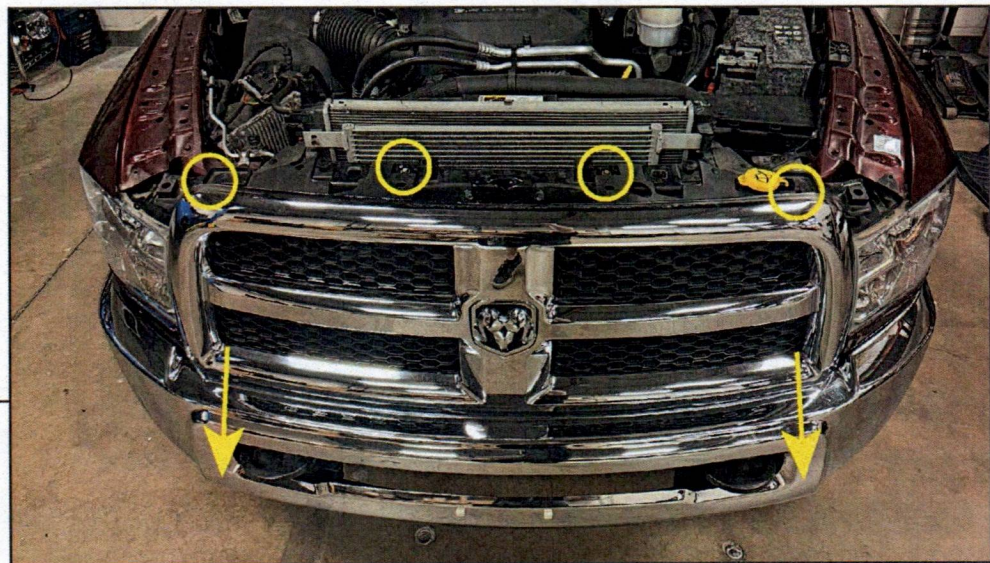
BARRICADE

STEP 1



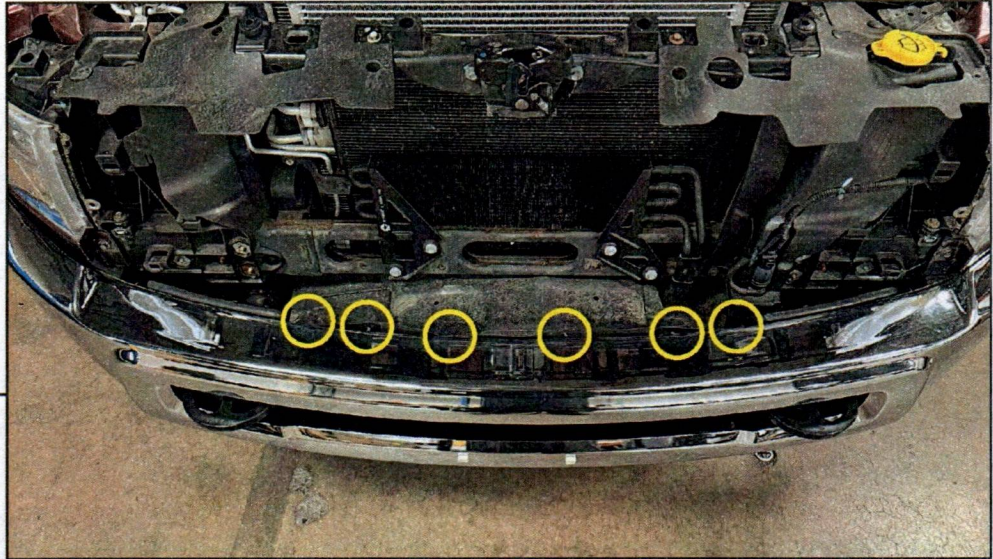
Open the vehicle hood. Using a panel removal tool, remove (6) plastic push clips securing the radiator cover to the vehicle. Then, lift and set the radiator cover aside.

STEP 2



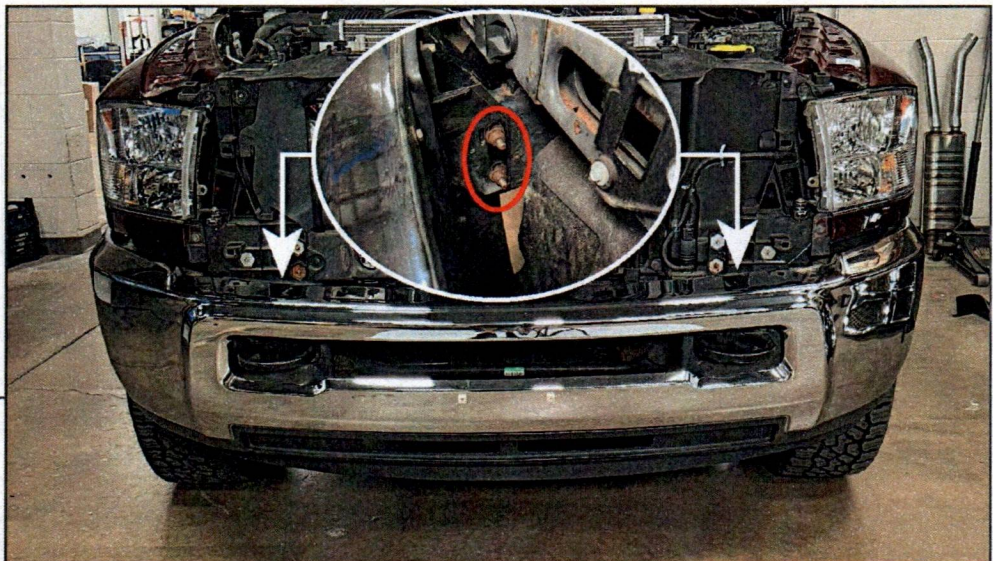
Remove (4) 10mm screws from the top of the grille. Then, slightly hinge the grille outwards to reveal the lower mounting points. Use a long pry tool to dislodge the lower mounts, and pull the grille away from the vehicle and set aside.

BARRICADE



STEP 3

Using a panel removal tool, release the (6) plastic push clips securing the air ducting to the bumper.



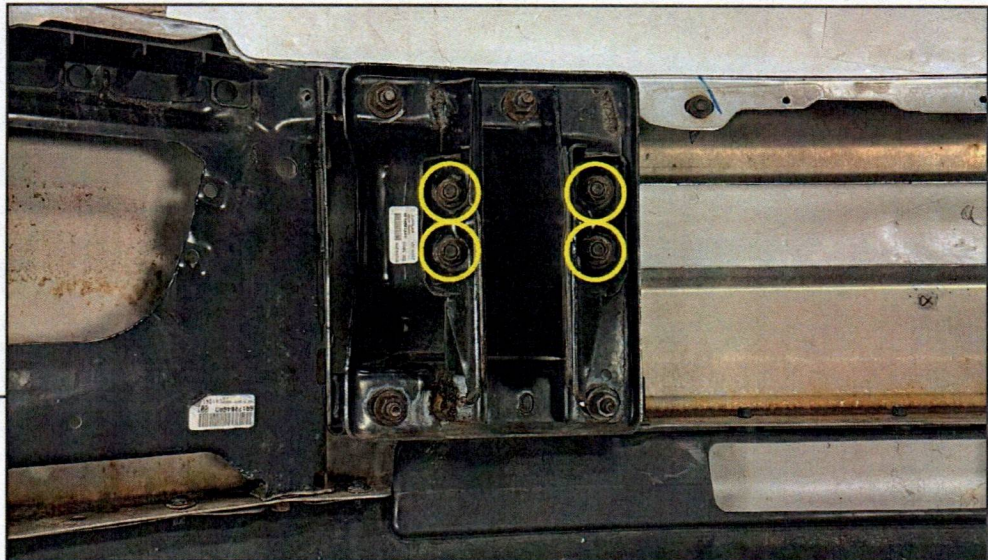
STEP 4

Locate and unplug the bumper wiring harness at the connector along the frame, if equipped with sensors/fog lights. Locate the bumper mounting points on the vehicle frame. With a helper, remove the (4) 18mm nuts and remove the stud plate from the bumper brackets/frame to release the bumper from the vehicle, and lift the bumper away from the vehicle.

Place the bumper on a soft surface for disassembly.

BARRICADE

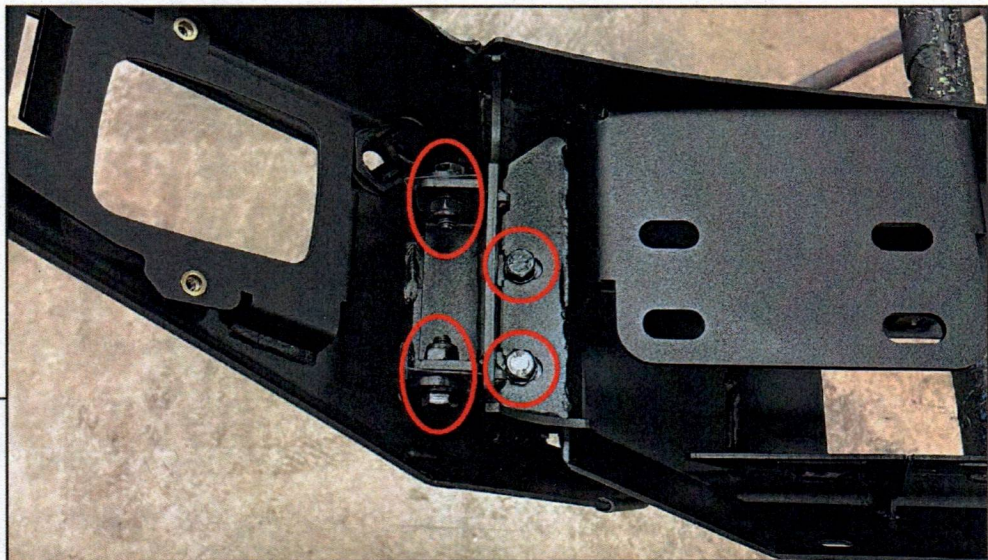
STEP 5



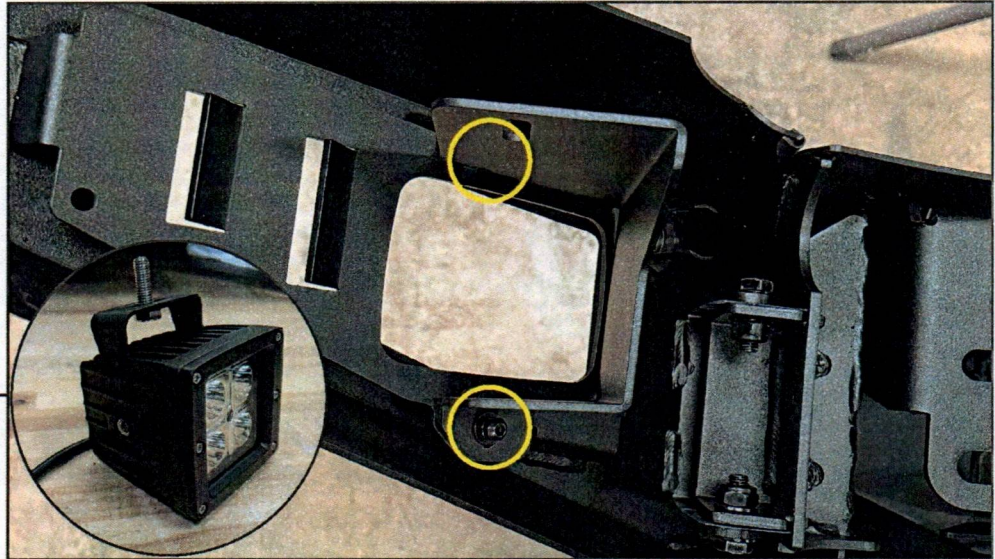
Remove the (2) 18mm bolts/nuts securing the mounting brackets to the back of the bumper. It is recommended to label the locations in correlation to the vehicle frame. The mounting brackets will be used in the same location & orientation on the new bumper.

Remove the proximity sensors and wiring harness from the bumper, if equipped. Some additional bumper disassembly may be required.

STEP 6

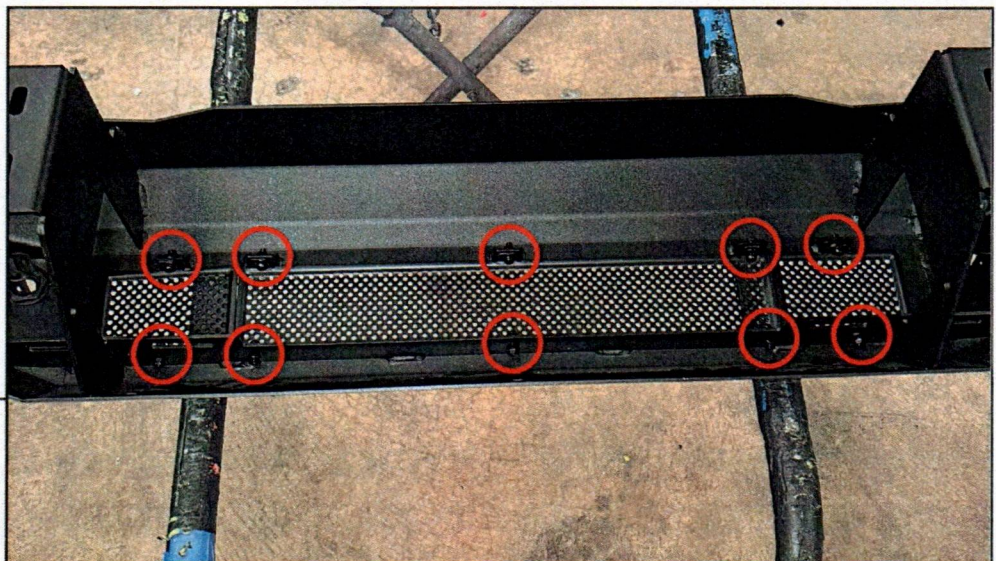


Place the bumper on a workable surface. Mount each end cap to the bumper using (4) M10 x 30mm bolts, (2) M10 lock washers, (6) M10 flat washers, and (2) M10 lock nuts.

STEP 7

Secure the LH and RH LED light enclosures to the bumper using (2) M6 x 20mm combo Allen bolts into the threaded inserts pre-installed in the bumper end caps.

Assemble the LED light brackets to the LED lights using (2) M6 x 12mm cap Allen bolts and (2) M6 lock washers. Then, secure the included LED lights to each enclosure using (1) M8 x 25mm hex bolt, (1) M8 lock washer, (1) M8 flat washer, and (1) M8 nut included in the lighting kit.

STEP 8

Secure the LH, RH, and Center mesh panels to the bumper using (10) M6 x 20mm combo Allen bolts and (10) M6 flange nuts.

Note: Installing a light bar can be used instead of the grille panels using the included M8 hardware and "L" brackets. Light bar sold separately, SKU # T542547 [20"] OR T542548 [30"].

"L" Brackets: (2) M8 x 25mm Bolts, (2) M8 Lock Washers, (4) M8 Flat Washers, (2) M8 Nuts
Light Bar to "L" Brackets: (2) M8 x 16mm Bolts, (2) M8 Lock Washers, (2) M8 Flat Washers

**STEP 9**

If desired, secure the front license plate mounting bracket to the bottom of the bumper using (2) M6 x 20mm Allen bolts, (4) M6 flat washers, and (2) M6 lock nuts. Then, fit the (2) square plastic screw retainers into the square holes in the bracket.

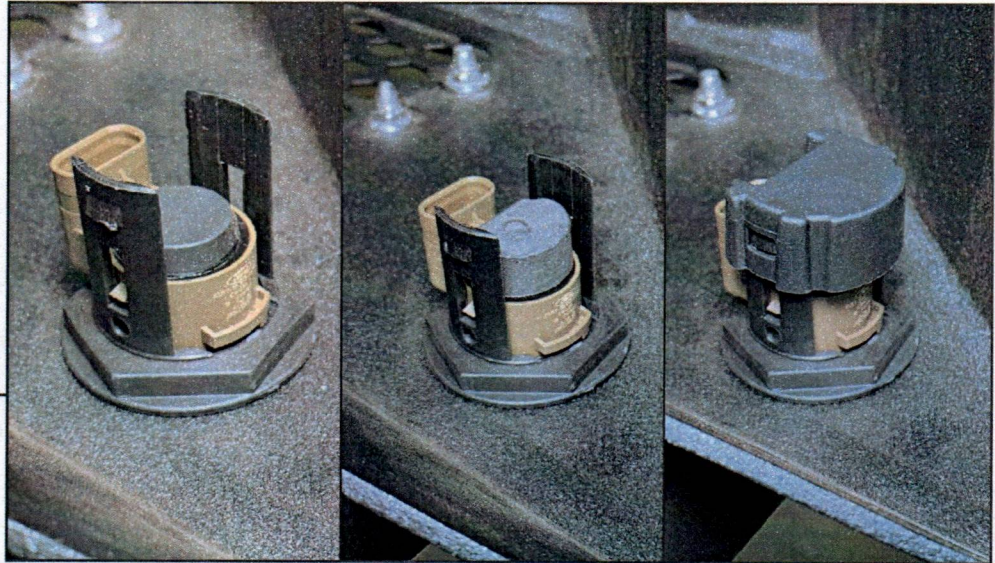
Use OEM license plate screws to secure the license plate to the bracket.

**STEP 10**

Proximity Sensors: Remove the OEM silicone gasket from the end proximity sensor. Then, install the included foam gasket onto the face of the sensor.

Vehicles without Proximity sensors, Skip to Step 13.

STEP 11



Sensor Mounting Option 1: Place the sensor into the designated port, ensuring the mounting tabs are within the slots. Adhere (1) rubber grommet to the sensor using the attached adhesive. Place (1) foam pad onto the rubber grommet. Place the (1) plastic cap onto the assembly, ensuring the (2) tabs lock into place to secure the sensor tightly to the port.

STEP 12

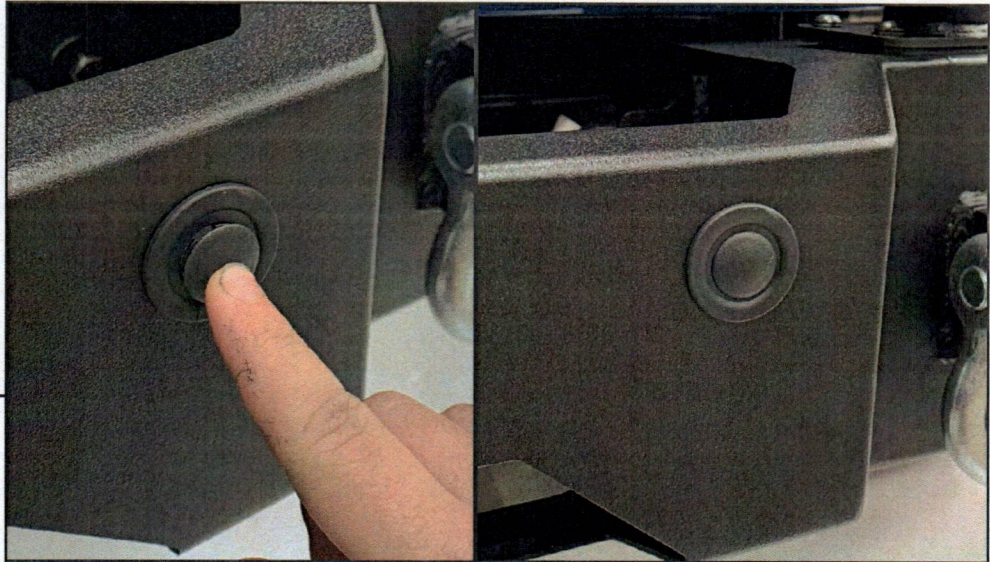


Sensor Mounting Option 2: Place the sensor into the designated port, ensuring the mounting tabs are within the slots. Using (2) Phillips screws, gently tighten the screws until moderate pressure is on the sides of the sensor to hold the sensor into place.

Note: Do NOT over-tighten the screws as the sensor can become damaged.

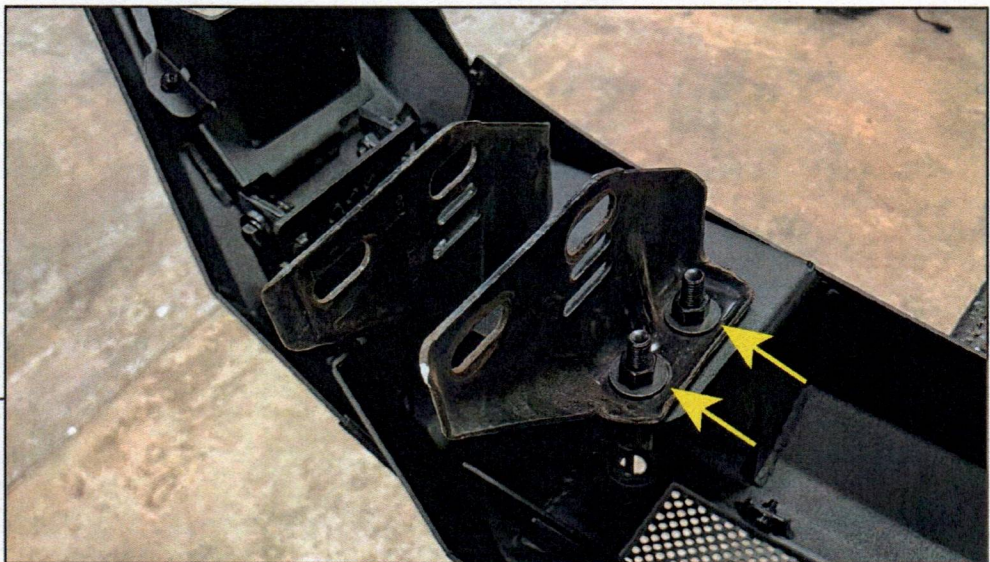
BARRICADE

STEP 13



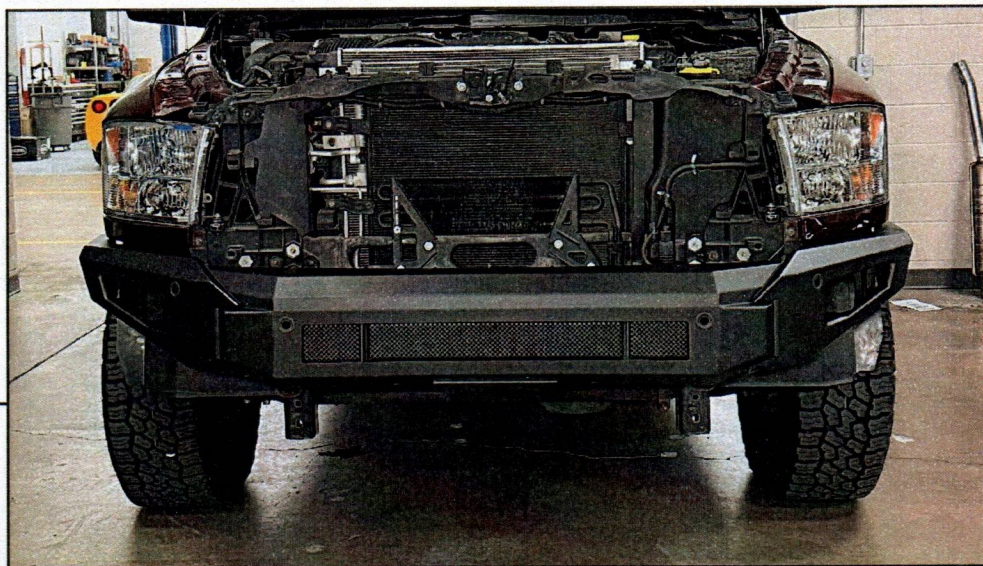
No Sensors: Press the plastic cap into the backup sensor housing through the face of the bumper.

STEP 14

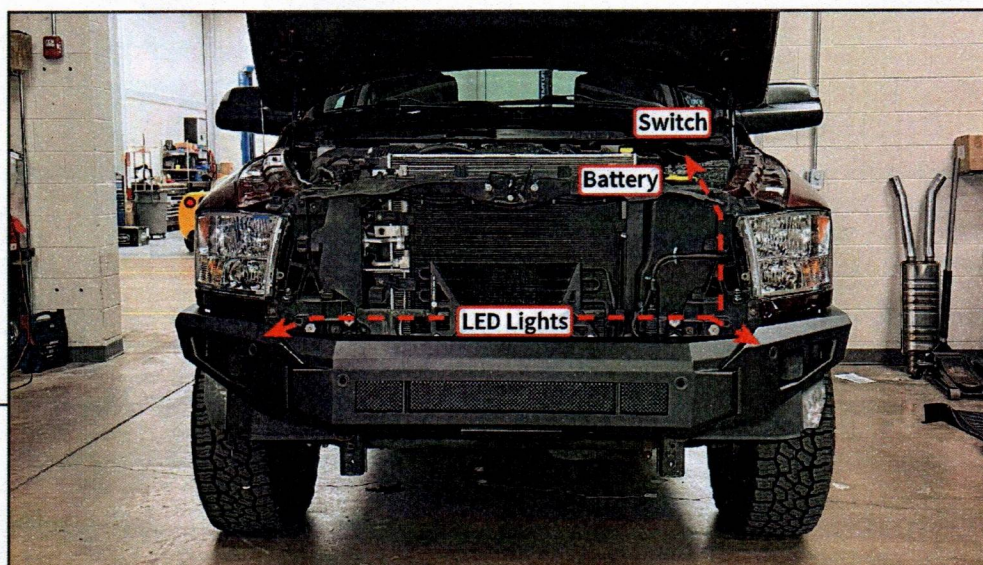


Fit the OEM bumper mounting brackets to the new bumper mounting pads, and secure each bracket into place using (2) M12x1.75 x 50mm bolts, (2) M12 lock washers, (4) M12 flat washers, and (2) M12 nuts.

Do not fully tighten the hardware at this time to allow for bumper adjustment when installed on the vehicle.

STEP 15

With a helper, lift the bumper to the vehicle frame rails, and re-install the OEM stud plate through the bumper brackets and the vehicle frame. Loosely install the OEM (4) 18mm nuts onto the stud plates to hold the bumper, but do not tighten.

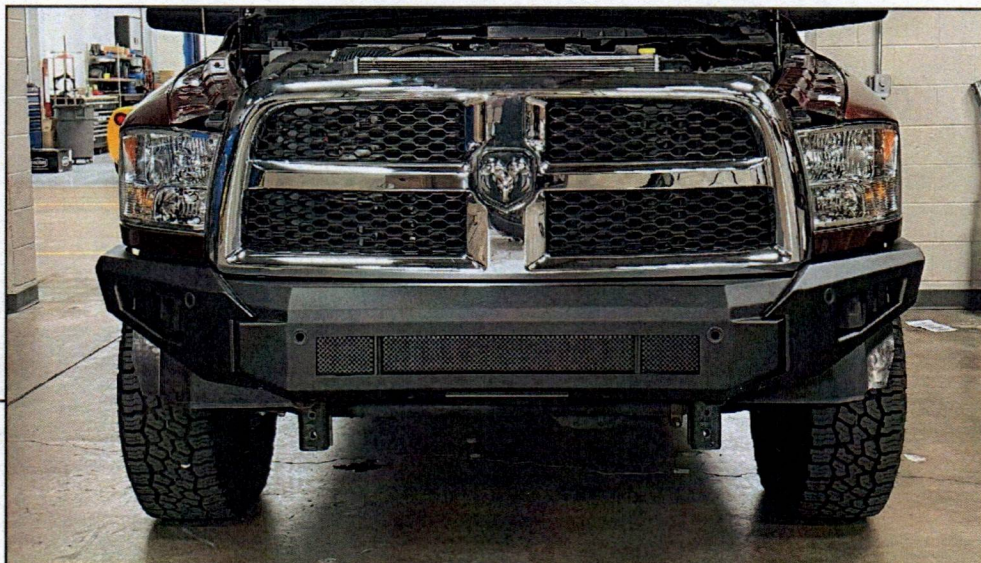
STEP 16

Route the included LED light wiring harness throughout the engine bay following the diagram above. Ensure to route the harness away from any hot/moving components. Use the included (10) cable ties to ensure the harness is secure. Mount the relay to a suitable location in the vehicle engine bay.

Unplug the switch connector, and set the switch aside. Route the switch connector on the main harness towards the main firewall grommet below the brake master cylinder. Carefully cut a small slit in the grommet to allow for the switch connector to route into the vehicle interior.

BARRICADE

STEP 17



Re-install the grille and radiator cover to the vehicle using the OEM hardware.

Adjust the bumper to best fit the vehicle, and tighten fully tighten all bumper mounting hardware.

STEP 18



If desired, remove (2) 24mm nuts/bolts from the frame extension to remove from the vehicle.

Trim the inner fender liner to best fit the new bumper. Ensure the inner fender liner is properly secured to the vehicle.

BARRICADE



STEP 19

Installation is now complete.