



---

# SKID PLATE FOR MODULAR HD FRONT BUMPER

(2010-2018 2500 / 3500)

---

## INSTALLATION INSTRUCTIONS

### CONTENTS

---

- (1) Skid Plate
- (5) M8x1.25 x 25mm Allen Bolts
- (5) M8 Lock Washers
- (10) M8 Flat Washers
- (5) M8 Nuts
- (1) 5mm Allen Key

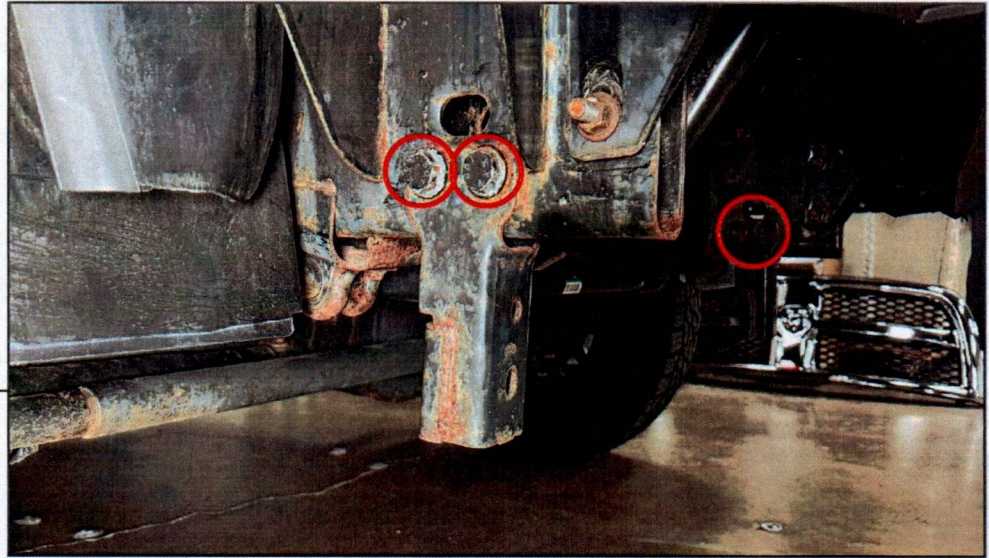
### TOOLS REQUIRED

---

- 13mm Socket / Wrench
- 24mm Socket / Wrench
- Ratchet
- 5mm Allen Key (Provided)

SKU # HR71038

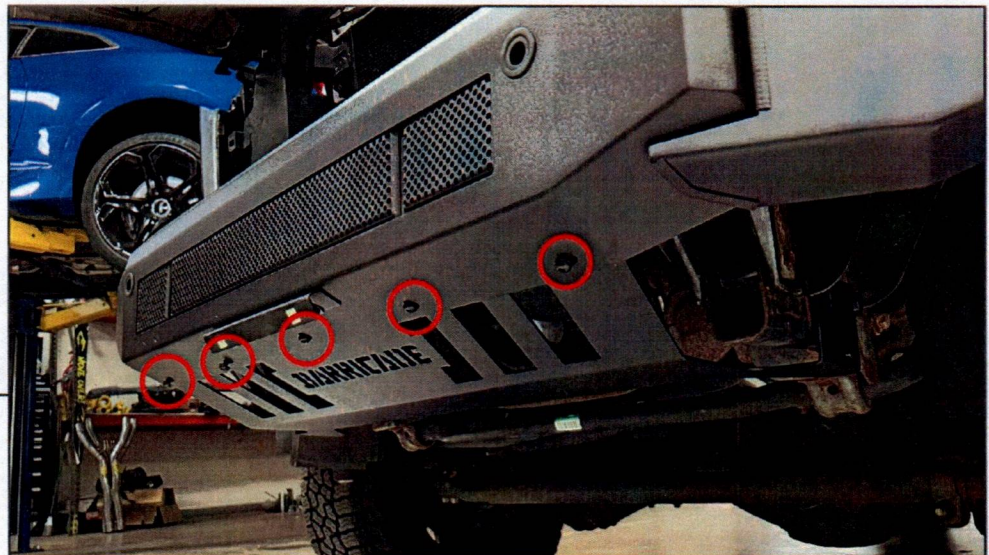
## BARRICADE



### STEP 1

From under the vehicle, remove (2) 24mm bolts/nuts securing each frame extension to the vehicle frame. Remove the frame extensions from the vehicle frame.

The (2) 24mm bolts/nuts will be reused.



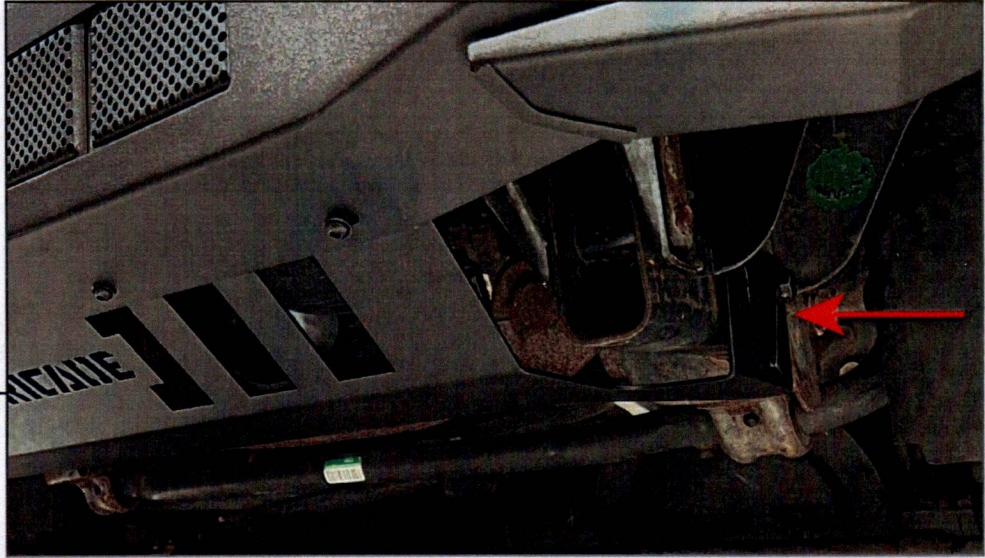
### STEP 2

Lift the skid plate above the bottom of the bumper. Loosely secure the skid plate to the bumper using (5) M8x1.25 x 25mm Allen bolts, (5) M8 lock washers, (10) M8 flat washers, and (5) M8 nuts.

## **BARRICADE**

---

### **STEP 3**



Lift the rear of the skid plate to the vehicle frame, and loosely secure into place using the original (2) 24mm bolts/nuts per side.

### **STEP 4**



Adjust the bumper to best fit the vehicle, and tighten all hardware to secure the skid plate into place.

Installation is now complete.