



# RUST BUSTER

**RB7724L & RB7724R**  
Rear Body Mount  
2002-2008 Dodge Ram 1500



**VIDEO AVAILABLE**



**Passengers Side – RB7724R**



**Drivers Side – RB7724L**

### **REQUIRED TOOLS**

Jack Stands or Lift  
Mig Welder  
Paint/Primer  
Hand Grinder  
Cutting Wheel or Torch  
Welding Gloves  
Welding Hood/Shield  
Ear & Eye Protection  
Sockets & Ratchet  
Fire Extinguisher

### **KIT CONTAINS**

Rear Body Mount

### **QTY**

1



# RUST BUSTER

## RB7724L & RB7724R Rear Body Mount 2002-2008 Dodge Ram 1500

### 1) PREPARING YOUR VEHICLE

Begin by disconnecting your battery prior to starting your installation.

Inspect your vehicle for leaking fuel lines, fuel tank and engine components. If you have fuel leaks repair all leaks prior to starting your installation. If your fuel tank is near your welding area **remove your tank prior to welding.**

Remove all combustible items above the work area such as seats, carpets, padding, etc.

**Keep all flammable materials away from the vehicle work area.**

### 2) PREPARING YOUR WORKSTATION

Keep a fire extinguisher close by in the case of fire and make sure you always have a designated "Fire Watch" to assist during the cutting or welding phases.

Abide by all apprenticed welding safety standards and practices.

Always use appropriate welding eye protection, ear protection, and work and fire safety gloves during the installation and within the work area.



### WARNING!

If you are unsure on how to perform the installation or how to operate any of the required tools listed above, it is **HIGHLY** advised that you enlist the work of a certified welder/installer.

Failure to follow proper safety precautions and instructions may result in serious injury. **The user assumes all liability when installing the product.**



# RUST BUSTER

## RB7724L & RB7724R Rear Body Mount 2002-2008 Dodge Ram 1500

### 3) **PREPARING FOR YOUR INSTALL**

Remove or lift your cab out of the way. Remove your body mounts bolt and bushing.

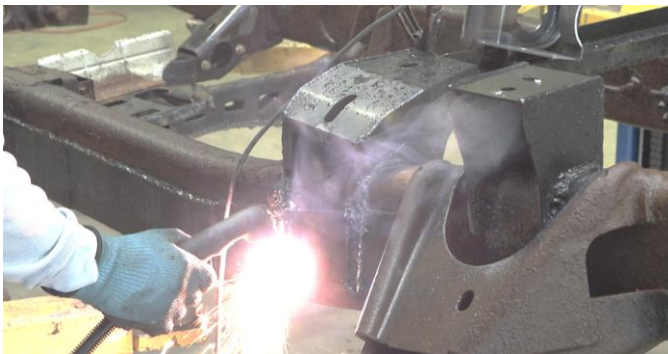
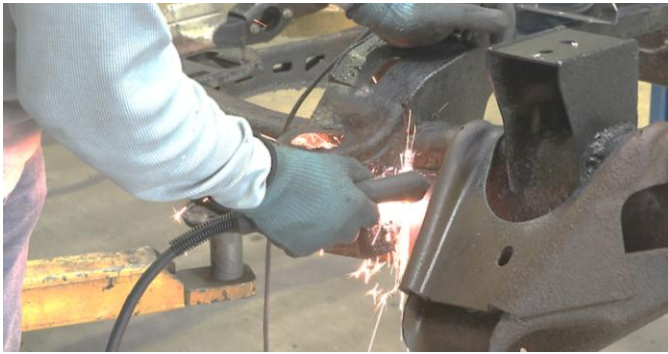
### 4) **CUT**

Cut off the factory rear body mount and any obstructions in the work area.

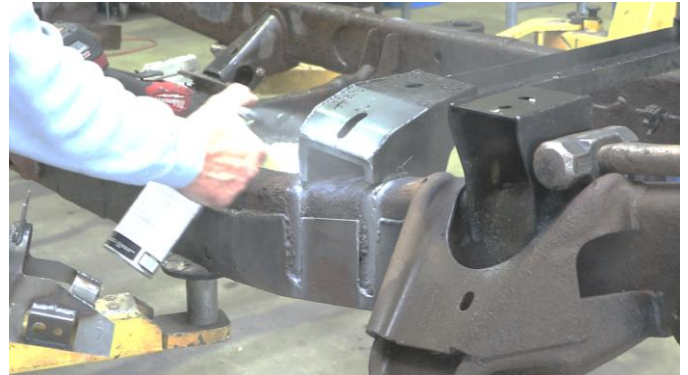
**NOTE:** The cut will be flush with the outside of the frame. Draw a vertical line flush with the outside of the frame to determine the cut. This will separate the old body mount from the factory crossmember.



Spray the work area with a weld-through primer to help prevent against rust development.

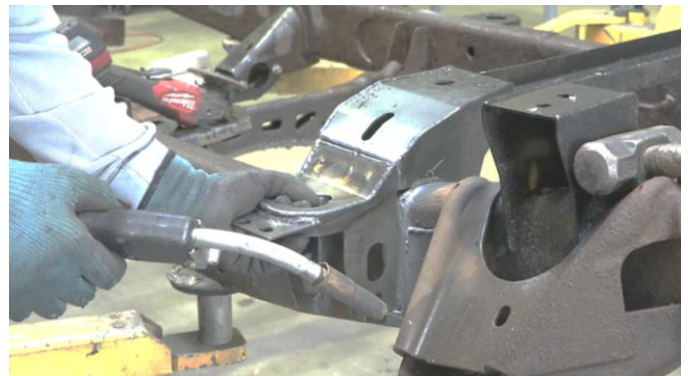


Grind the frame free of rust and debris, revealing bare metal.



### 5) **WELD**

Take your replacement rear body mount and hold it up to the silhouette where your factory bed mount was originally located.





# RUST BUSTER

## RB7724L & RB7724R Rear Body Mount 2002-2008 Dodge Ram 1500

Following proper welding procedures, tac weld your rear body mount onto the frame before welding it on fully. Weld 100% around all edges.



### 6) PAINT

Paint the part with primer or other rust inhibitor to help prevent or reduce the risk of rust formation.

We recommend our Rust Buster Rust Converter & Primer Spray Paint (RB9917).



### 7) REINSTALL

Reinstall your body mounts bolt, bushing and cab.