

WeatherTech®

Seat Protector

BENCH

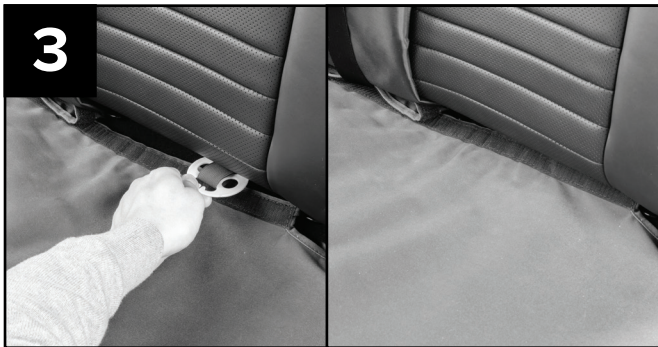
Installation Instructions



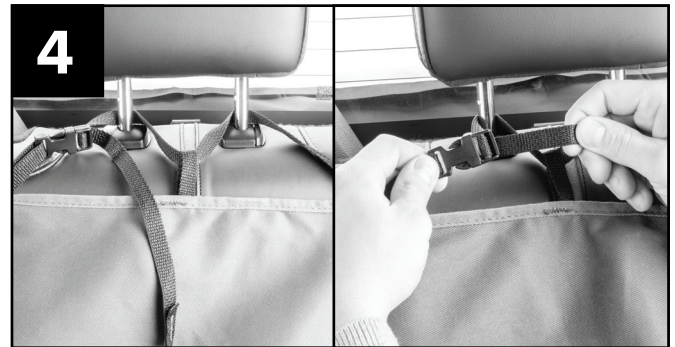
1 Unroll cover. Place seat bottom portion grippy side down and fold seat back portion over onto bottom portion. Ensure the half with straps is on top.



2 (Optional) – If the bench seat has a middle seat belt, undo the hook and loop between seat base and seat back of the Seat Protector, and bring the seat belt around the Seat Protector. Re-attach the hook and loop.



3 Insert all 3 disks between seat base and seat back. Once inserted, turn the disks perpendicular to the seat opening to lock them in place.



4 Unfold top half upwards to cover the seat back and secure each strap around the headrest by looping the buckle around one post, through the center loop, around the other post, and buckle the strap. Tighten the strap as needed for fitment. (Skip to Step 8 if there are no child safety latches present).



5 If vehicle is equipped with child safety latches, separate the hook and loop attachments at the top of the cover.



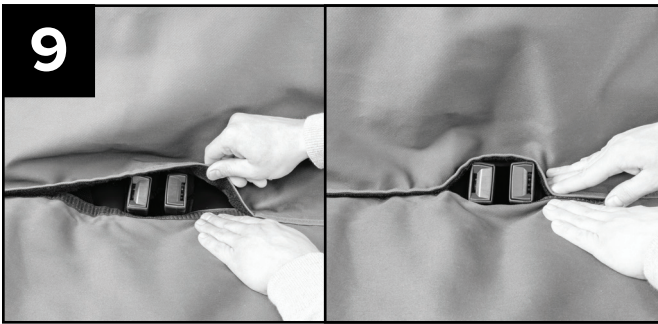
6 Thread attachments through the child safety latch behind each headrest.



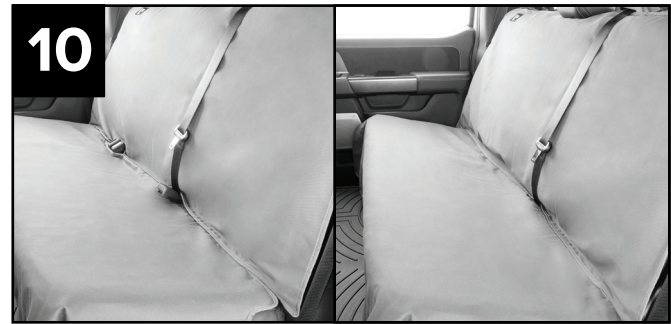
Secure hook and loop attachments once threaded through.



Pull the elastic straps in the top corners over the seat back.



To access the seat belt buckles, separate the hook and loop closures on the seat cushion portion.



Pull the seat belt buckles through, securing the hook and loop closures around the buckles.



Finish installation by pulling the bottom portion of the Seat Protector around the seat bottom, draping it from the seat to the floor.

HELPFUL HINT:

Move front row seats forward for extra room during installation.

NOTE:

When installing “semi-custom” products, additional adjustments may be necessary to achieve desired fit.

CLEANING INSTRUCTIONS:

1. Using a large commercial washer without agitator, wash the Seat Protector using 1/4 cup of a gentle detergent, without bleach, in cold water. Do not pour detergent directly onto the Seat Protector.
2. Rinse the Seat Protector twice (2X) to remove all of the detergent.
3. Hang and allow to air dry.

SPOT CLEANING:

1. Mix one ounce of a gentle detergent, without bleach, per quart of warm water.
2. Spray or sponge onto the Seat Protector.
3. Rinse with plain water (until no suds) and allow to air dry.



Made in USA

LET'S TALK

800-441-6287 or 630-769-1500

For warranty information, please visit www.WeatherTech.com/warranty