



# HD STEERING KIT

(2003-2013 2500 / 3500 4WD)

---

## INSTALLATION INSTRUCTIONS

### CONTENTS

---

- (1) Steering Arm Assembly
- (1) Steering Stabilizer
- (1) Pitman Arm
- (1) M12x1.75 Nut
- (1) M12 Flat Washer

### TOOLS REQUIRED

---

- 15, 21, 24, 32mm Deep Sockets
- Ratchet / Impact
- Hammer
- Floor Jack & Jack Stands
- Pickle Fork / Joint Separator
- Pitman Arm Puller

SKU # HR75844

**STEP 1**



Safely lift and support the vehicle off of the ground. Remove the vehicle wheels. Identify the steering arm component mounting points.

**STEP 2**

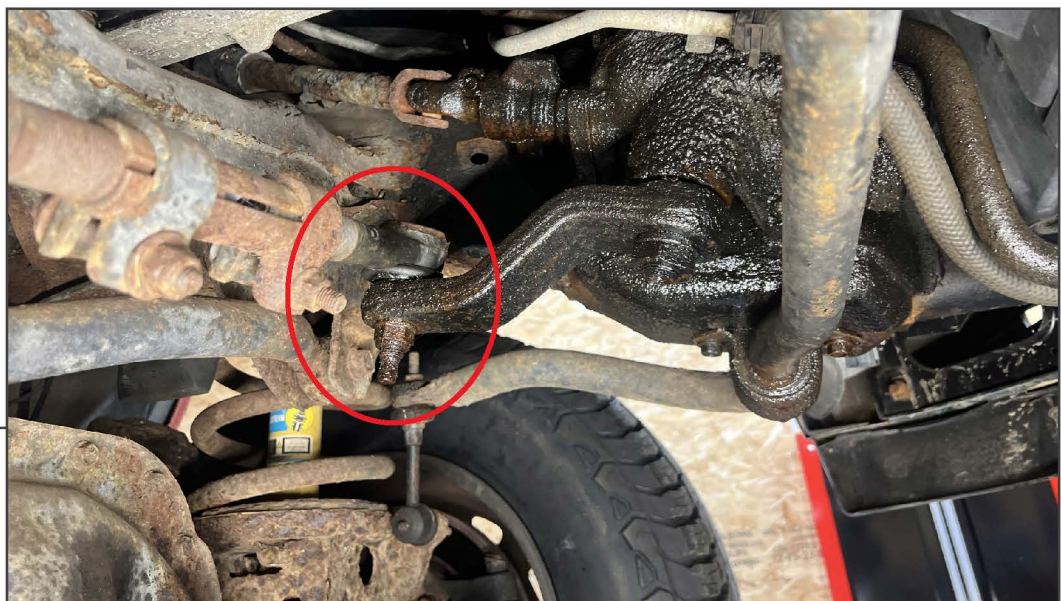


Remove (1) 15mm nut/bolt securing the steering stabilizer to the axle. Then, remove (1) 19mm bolt securing the steering stabilizer to the tie rod. Remove the steering stabilizer from the vehicle.



**STEP 3**

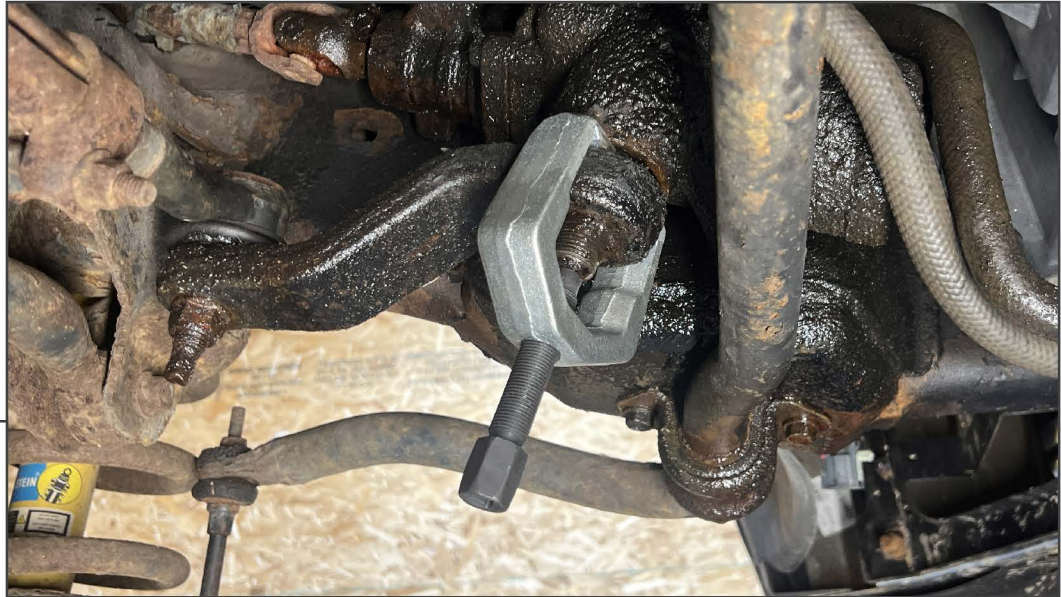
Remove the cotter pin from each steering arm joint. Loosen (2) 21mm nuts securing the steering arms to the knuckles. When the nut is loose, use a hammer to strike the knuckle to dislodge the joint. Alternatively, use a joint separator tool/pickle fork.



**STEP 4**

Loosen (1) 21mm nut securing the steering arm to the pitman arm. When the nut is loose, use a joint separator tool/pickle fork to dislodge the joint from the pitman arm.

Remove the nuts from all steering joints and lift the steering arm assembly away from the vehicle.



**STEP 5**

Use a pitman arm puller to remove the pitman arm from the steering box. If the pitman arm is stuck, apply tension to the puller and tap the pitman arm with a hammer to pop the arm loose from the splines. Then, install the new pitman arm in the same direction as the original was removed.

Note: In the case the pitman arm will not disconnect from the steering box, the original pitman arm will work with the HD steering arms. It is recommended to use the new pitman arm if possible.



**STEP 6**

Lay the new steering arms in the same orientation to the original steering arms. Measure the length of the original steering arms, and translate the length to the new steering arms.



**STEP 7**

Fit the steering arms into the vehicle knuckles & pitman arm and secure into place using the included (3) flange nuts.



**STEP 8**

Fit the new steering stabilizer to the steering rod using the included (1) M12 flat washer and (1) M12 nut. Then, extend the stabilizer to reach the axle mount and secure using the original 15mm bolt/nut.



**STEP 9**

Ensure all steering arm joints, brackets, and adjuster hardware is fully secure.

Pitman Arm to Steering Box: 185 ft. lbs.

Drag Link to Pitman Arm: 65 ft. lbs.

Drag Link to RH Steering Knuckle: 40 ft. lbs. + 90°

Tie Rod to LH Steering Knuckle: 40 ft. lbs. + 90°

Adjustment Sleeve Nuts: 45 ft. lbs.

Installation is now complete.