

THINGS TO DOUBLE CHECK

- MAKE SURE ALL BRACKETS ARE TIGHT.
- MAKE SURE FOG LIGHTS ARE WORKING, IF NOT CHECK PLUG THAT WAS DISCONNECTED IN THE CENTER OF THE BUMPER.
- IF BUMPER IS CROOKED OR LEANING IT IS OKAY, GO BACK THROUGH THE STEPS AND LOOSEN THE BOLTS HOLDING THE BRACKETS TO THE FRAME. MOVE THEM AND TAKE MEASUREMENTS AS NEEDED UNTIL YOU ARE SATISFIED WITH BUMPER LOCATION.
- IF BOLTS HAVE BEEN STRIPPED, IT'S OKAY, RUN TO LOCAL HARDWARE STORE AND PURCHASE SOME 10X1.5 NUTS AND USE THEM TO TIGHTEN THE BOLT FROM THE BACK SIDE. THERE IS PLENTY OF ROOM.
- YOU HAVE SUCCESSFULLY INSTALLED YOUR BUMPER SPACER.
- FOR OFF-ROAD USE ONLY

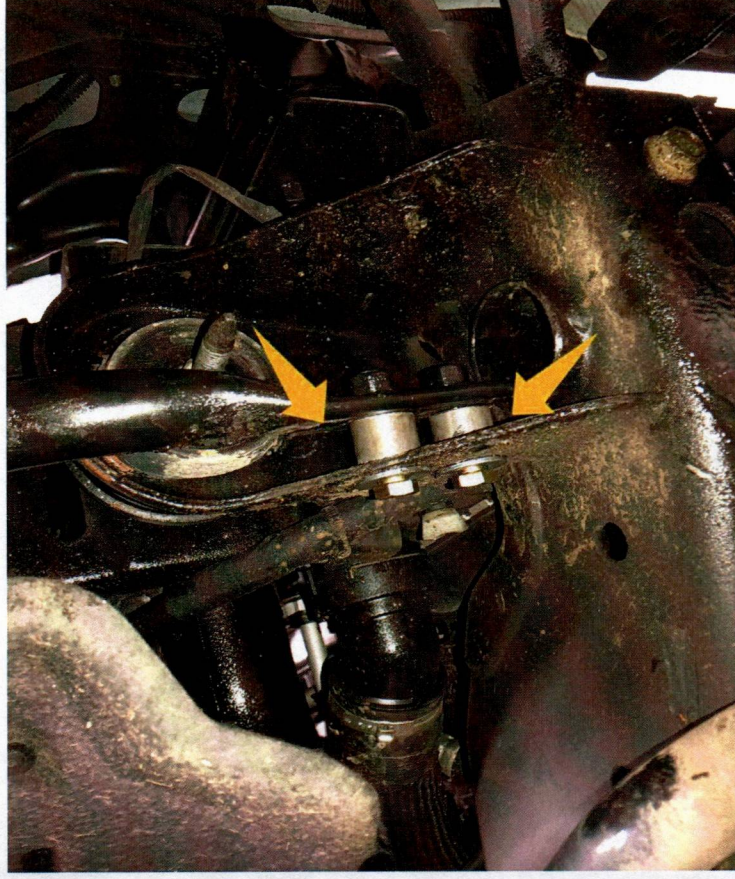


SIDE SUPPORT BRACKET SPACERS

- WITH BUMPER INSTALLED AND LEVELED, YOU CAN RESUME WITH PUTTING THE SIDE BRACKETS ON.
- INSTALL NEW HARDWARE AND ROUNDS ON FRAME SIDE OF THE SIDE SUPPORT BRACKET. THIS ALLOWS FOR THE MOVEMENT OF THE BRACKET FORWARD.
- TIGHTEN BOLTS BY HAND, IMPACT WILL STRIP THESE.

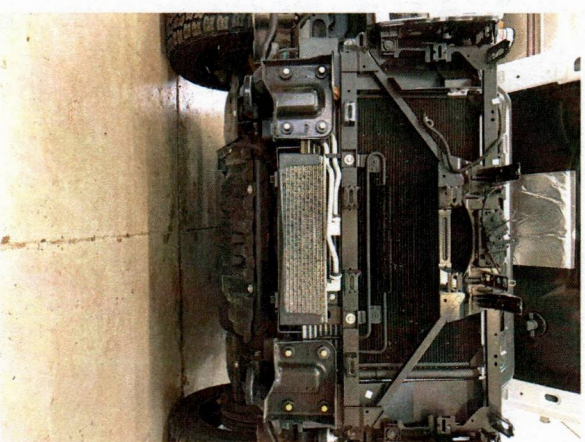
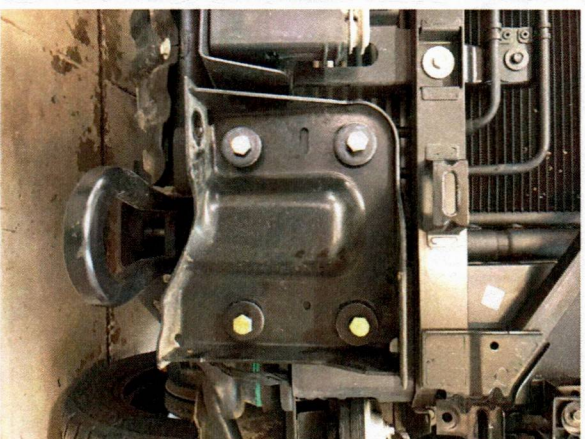
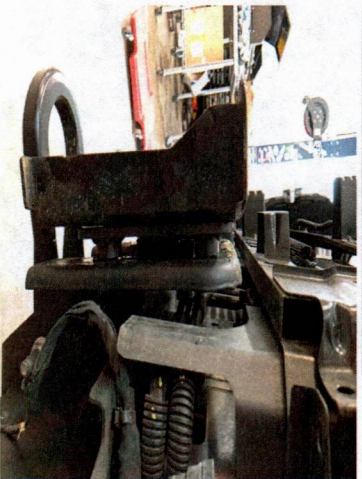
HARDWARE HERE IS:

4 BOLTS, 4 SMALL ROUNDS, 4 THIN WASHERS
FACTORY BOLT IS RE-USED ON BUMPER SIDE



INSTALL BUMPER SPACER BRACKET

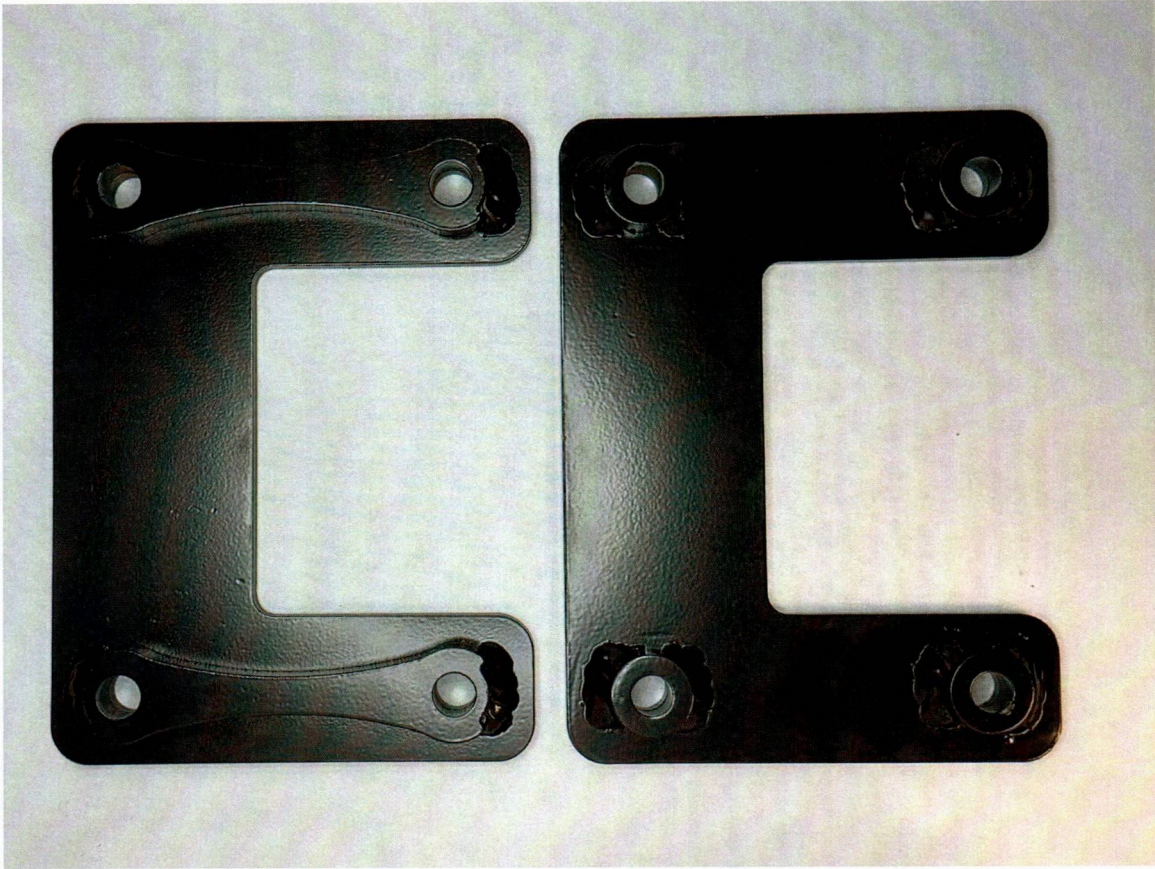
- REMOVE 4 BOLTS HOLDING FACTORY BUMPER BRACKETS TO FRAME.
- INSTALL SPACER BRACKET BETWEEN FACTORY MOUNT AND FRAME. AS SHOWN BELOW.
- INSTALL NEW HARDWARE WITH LARGE WASHERS THAT CAME WITH KIT.
- TIGHTEN BY HAND! IMPACT WILL STRIP THE FACTORY FRAME MOUNT THREADS. THIS WILL RESULT IN A BAD TIME.



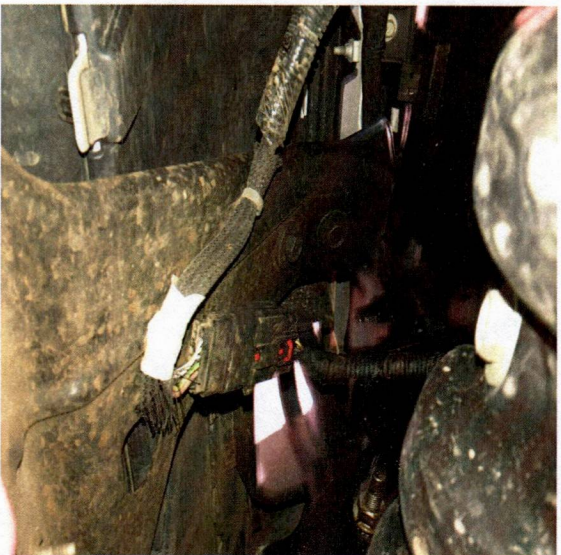
HARDWARE USED ON THIS STEP:
8 BOLTS, 8 LARGE WASHERS, 2 LARGE BRACKETS

Gen I Bracket Vs Gen II Bracket Design

- The photo to the left shows the Gen I design on the bottom, and the new Gen II design on the top.
- Please make sure the side we are looking at in this photo goes towards the frame during installation.
- Please note – Design update did not change any install instructions.
- These brackets are currently in a transitional phase due to an updated manufacturing process. If you received a Gen I bracket, please ignore this page of the instructions.



REMOVE BUMPER CONTINUED



WIRE HARNESS PLUG
LOCATED IN CENTER OF
BUMPER. ACCESS FROM
BOTTOM OF BUMPER

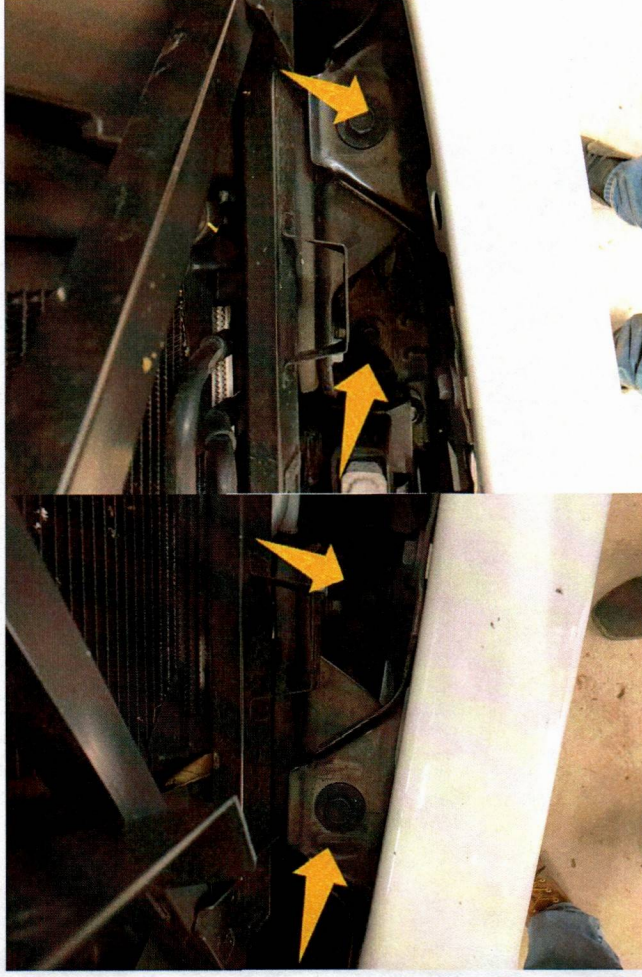


SIDE SUPPORT BRACKET PICTURES
BUMPER SIDE (LEFT)
FRAME SIDE (RIGHT)



REMOVE BUMPER

- DISCONNECT WIRE HARNESS PLUG LOCATED IN CENTER OF BUMPER (IF EQUIPPED)
- REMOVE 3 BOLTS ON EACH SIDE SUPPORT BRACKET. THEN REMOVE BRACKET FROM TRUCK. **(SAVE BUMPER SIDE BOLTS FOR INSTALL)**(PICTURES ON NEXT PAGE)
- REMOVE 4 BUMPER BOLTS FACING THE GROUND FROM TOP OF BUMPER. (SHOWN TO YOUR RIGHT)
- REMOVE BUMPER FROM TRUCK



BUMPER BOLTS
SHOWN ABOVE

REMOVE GRILLE

- REMOVE BOLTS ATTACHING GRILLE TO GRILLE SUPPORT
- GRAB THE GRILLE AND CAREFULLY PULL UNTIL THE GRILLE COMES OFF (pulling from center usually helps)



REMOVE GRILLE COVER

- OPEN HOOD
- REMOVE PUSH PINS HOLDING DOWN PLASTIC COVER, SAVE FOR RE-INSTALL (SHOWN IN PICTURE)
- REMOVE PLASTIC GRILLE COVER





.75" Bumper Spacer

Applications: 2015-19 Chevrolet & GMC 2500HD/3500HD