

Upper Control Arms Installation Instructions

3C295056 & 3C295076



Kit Contents:	Quantity:
Upper Control Arm	2 pcs.
PU Bushing	8 pcs.
PU Bushing Tube	4 pcs.
M6x1 Zerk	4 pcs.
Ball Joint (K6292)	2 pcs.
M14x1.5 Castle Nut	2 pcs.
Cotter Pin	2 pcs.
M8x1.25-30 Bolt	8 pcs.
M8x1.25 Lock Nut	8 pcs.

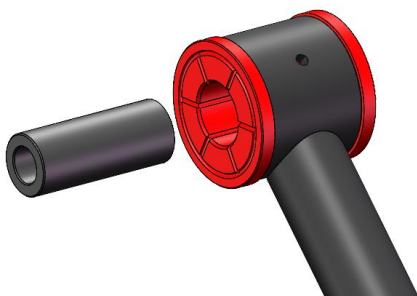
Please check that all accessories are complete before installation. The accessories are packaged in bags.

PU Bushing Install

1. Apply Silicone-based Lubricant at the installation site and press the PU bushing in.



2. Apply Silicone Based Lubricant to the tube and press it into the inner hole of the PU bushing.



3. Pay attention to the position of the zerk fitting. After installing the kit, screw on the zerk fitting and use a Lever-Action Manual Grease Gun to lubricate it.



Upper Control Arm Install Instruction

1. Raise Vehicle

- Park the vehicle on a flat, level surface. Make sure the vehicle is in park or gear, and that the parking brake is set. Raise the front of the vehicle and support the frame with jack stand ;
- Remove front wheels ;



2. Remove Stock UCA

- Remove the factory upper control arms by supporting the lower control arms with a floor jack or stand used in a safe fashion ;
- Loosen the ball joint nut of the upper control arm enough until the nut can be spun by hand, but do not remove totally. Use a pickle fork to separate the ball joint from the spindle or tap on the side of the spindle next to the ball joint stud. When the tapered seat of the ball joint breaks loose remove the ball joint nut, and separate the factory upper control arm from the spindle ;



- Remove the factory bolts and eccentric washers that connect the control arm to the

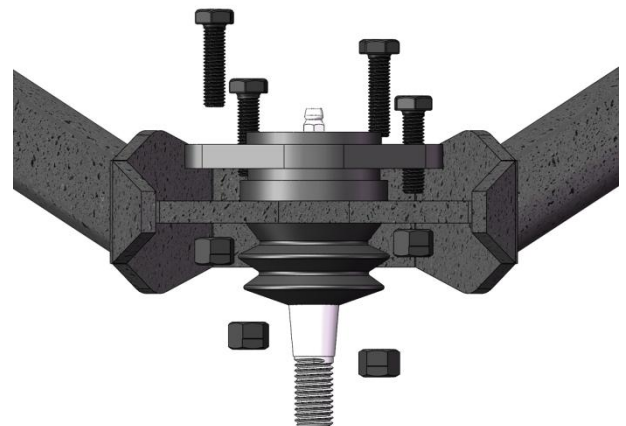
frame and retain them for future use. Place them aside and note the order in which the components were removed, that way they may be re-installed in the same manner they came off ;



3. Install the New Ball Joint

- Secure the Ball Joint to the top or bottom of the Upper Control Arm with four M8x1.25-30 Bolts and M8x1.25 Lock Nuts ;

Tighten bolts to 22 lb-ft (30 N·M) .



4. Install New UCA

- Mount the Upper Control Arms to the frame with the factory nuts, bolts, and eccentric washers as previously removed ;

Torque alignment nuts to 125 lb-ft (175N·M) .

- Mount the Ball Joint to the spindle with supplied hardware ;

Torque the castle nut to 90 lb-ft (122 N·M).

- Install Cotter Pin and bend to lock into place ;



If the castellations in the Castle Nut and the hole in the ball joint pin do not align once torqued to 90 lb-ft continue tightening the nut until the two are aligned and the Cotter Pin can be installed.

Suggestions:

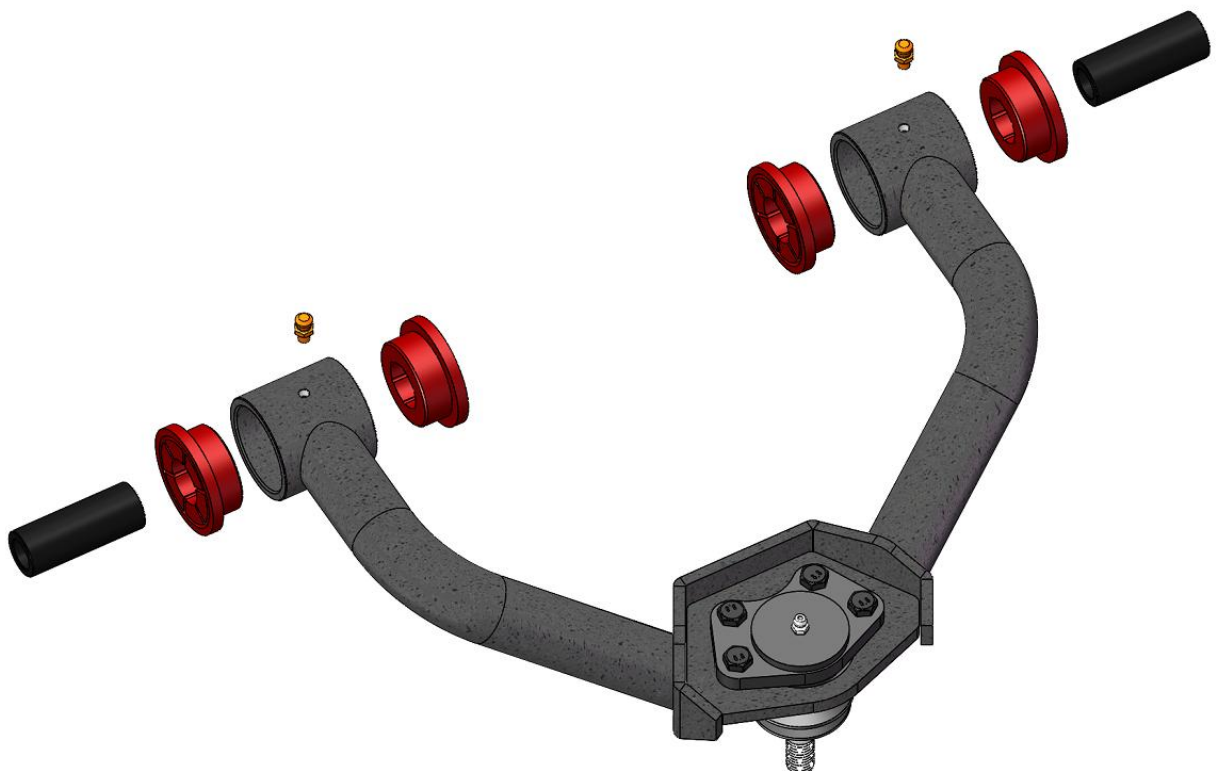
- Re-check all bolt torques after the first 100 miles, and after every trip off-road.
- Grease the control arm bushings periodically, especially after wet or dusty trips.
- When re-greased the upper control arm bushings, the upper control arm bolt must first be loosened. After re-greased and purging the old grease, the upper control arm bolt can be re-torque.
- UCA Ball Joint Replacement OEM part number: K6292

NEVER LOOSEN THE NUT TO GET THE CORRECT ALIGNMENT!

5.Reinstall front wheels.

6.Repeat steps 2-5 on the opposite side of the vehicle.

7.Alignment recommended after installation !



IMPORTANT NOTE:

1: Contact us for a video if you can't assemble these parts.(an easy work)

2: Important Tips on zerk: Do not over tighten the zerk, or it may break.

Zerk can fill in grease after some use. (It is pre-greased when you get it).

3: When adding grease to the ball joint, be sure to pay attention to the condition of the dust cover. Over-greasing can cause the dust cover to burst.



4: If you hear the bushing squeak, you need to add grease. When adding grease to the bushing, be aware that excessive pressure can cause irreversible deformation of the polyurethane bushing. The picture shows the deformed and failed polyurethane bushing.



Tips: What Grease Should I Use For Polyurethane Bushings?

It is recommended to use a Silicone Based Lubricant. A common additive to Silicone Lubricant base is PTFE (Polytetrafluoroethylene) since it lowers friction and is completely waterproof, both things you want in a lubricant.

If you can't find Silicone Based Lubricant, Marine Grease and Heavy Duty Grease also can be used.



Not So Suitable Lubricants: Motor Oil, Spray Lubricant



5: Warranty of the ball joints and bushings: We support one chance to exchange parts for free within 1 year if the control arms go wrong.

Thank you for the purchases!

It is our honor to help you. So please write us about what you think and what you need. We will reply you ASAP and try our overwhelming best to help you solve the problem. Please feel free to contact us via eBay message or Amazon tools.

Email: info@ksppperformance.com

Amazon:

1. Visit www.amazon.com/your-orders
2. Find your product
3. Click on "contact seller"
4. Include your order #

eBay:

1. Visit www.ebay.com
2. Click on "My eBay"
3. Find your product
4. Click on "More actions"
5. Click on "Contact seller"