



---

# HD MODULAR FRONT BUMPER

(2020-2023 SILVERADO 2500HD / 3500HD)

---

## INSTALLATION INSTRUCTIONS

### CONTENTS

---

(1) Front Bumper	(10) M10 Lock Washers
(1) Upper Filler Panel	(16) M10 Flat Washers
(1) LH Frame Mounting Bracket	(6) M10 Nuts
(1) RH Frame Mounting Bracket	(6) M8x1.25 x 25mm Hex Bolts
(2) LH / RH LED Light Enclosures	(2) M8x1.25 x 16mm Hex Bolts
(2) LH/RH Mesh Panels	(8) M8 Lock Washers
(1) Center Mesh Panel	(12) M8 Flat Washers
(2) LH/RH "S" Air Duct Brackets	(4) M8 Nuts
(2) Bumper "L" Brackets	(4) M6x1.00 x 20mm Hex Bolts
(1) License Plate Bracket	(2) M6x1.00 x 20mm Allen Bolts
(2) License Plate Screw Inserts	(18) M6x1.00 x 20mm Combo Allen Bolts
(2) LED Light "L" Brackets	(8) M6 Flat Washers [Large OD]
(2) LED Light w/ Mounting Kit & Harness	(4) M6 Flat Washers [Small OD]
(4) Proximity Sensor Install Kits & Harnesses	(10) M6 Flange Nuts
(6) M10x1.50 x 35mm Hex Bolts	(6) M6 Lock Nuts
(4) M10x1.50 x 30mm Hex Bolts	(1) 4mm Allen Key

### TOOLS REQUIRED

---

10-19mm Sockets/Wrenches  
Ratchet w/ 12" Extension  
T-15 Torx Socket/Bit  
Panel Removal Tool

SKU # HS69451

# BARRICADE

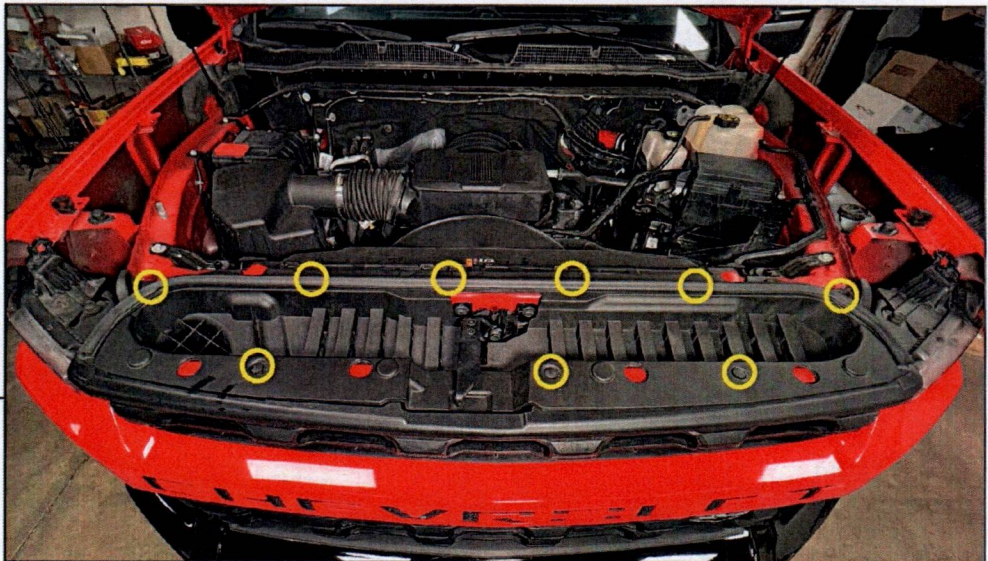
---

## STEP 1



Open the vehicle hood. Remove (2) T-15 Torx screws from the hood release lever. Then, slide the lever off of the metal latch.

## STEP 2

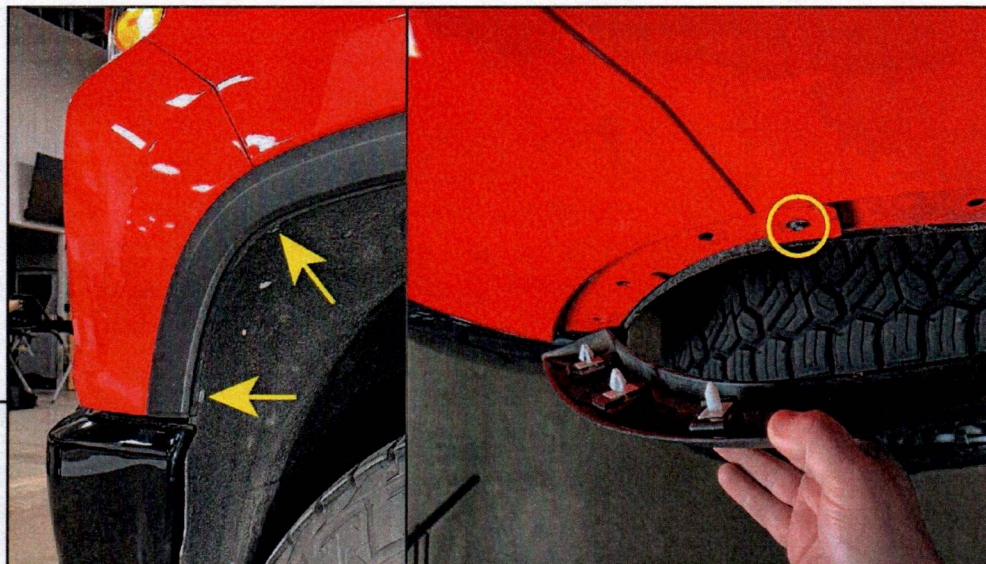


Remove the (9) plastic push clips from the upper radiator cover. Lift the cover from the vehicle and set aside.

## BARRICADE

---

### STEP 3



Remove (2) T-15 Torx screws from the inner fender liner. Firmly pull the front of the fender flare away from the body, the flare is only secured by plastic clips. Remove (1) 7mm screw from the front painted trim panel.

Repeat this step for the opposite side of the vehicle.

### STEP 4

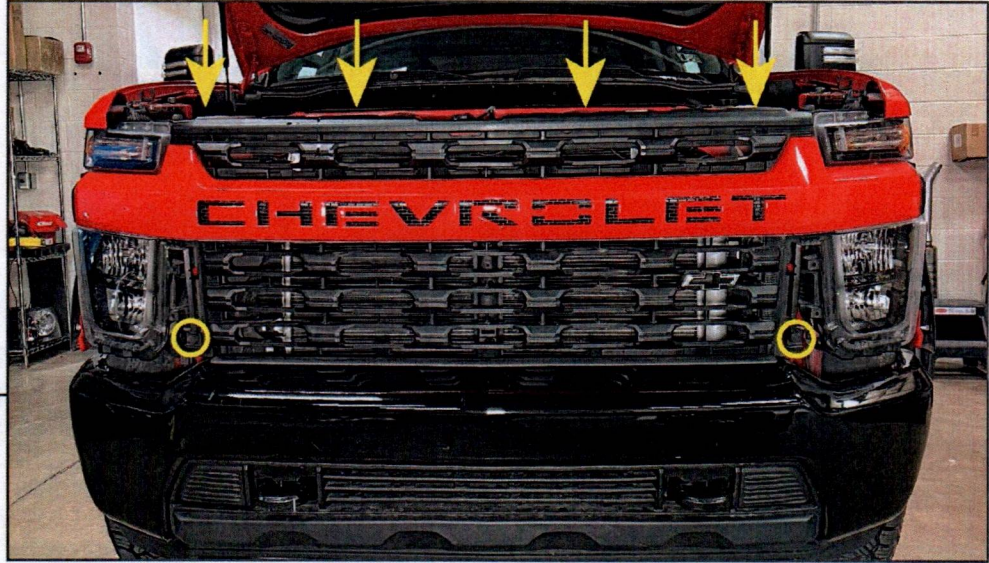


Pull the painted trim panel from the vehicle fender starting from behind the fender flare. Then, firmly pull the panel away from the body to release the (4) plastic retaining clips. Lift the gasket over the bumper, and remove the panel from the vehicle and set aside.

Repeat this step for the opposite side of the vehicle.

## BARRICADE

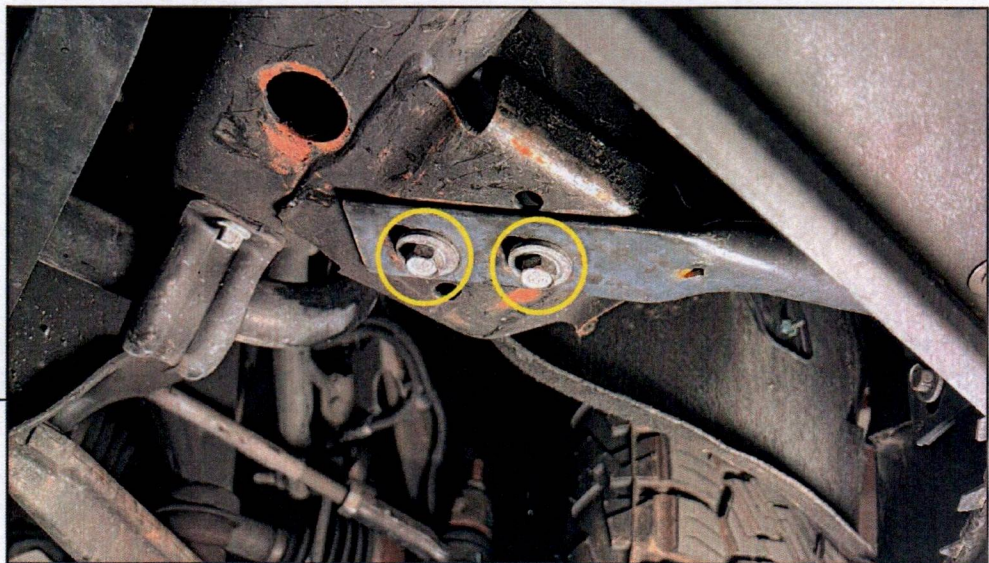
---



---

### STEP 5

Remove (6) 10mm bolts around the perimeter of the grille assembly. Then, lift the top edge and pull outwards on the grille assembly to remove the grille from the body. The grille uses retainers to mount into place and pulling the grille firmly at various places will dislodge the retainers.



---

### STEP 6

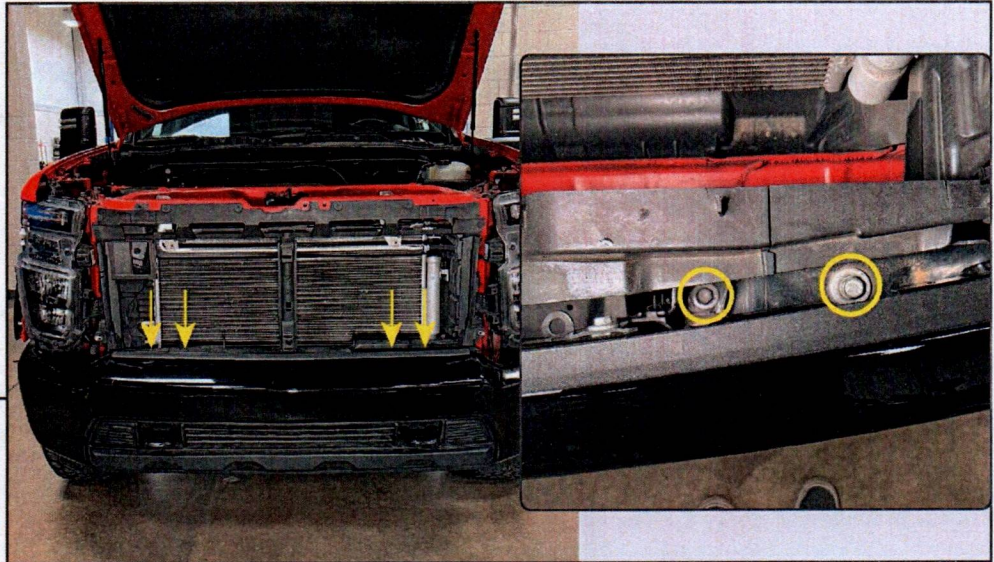
From under the vehicle, locate the bumper to frame braces. Remove the (2) 15mm bolts from the brace.

Repeat this step for the opposite side of the vehicle.

## BARRICADE

---

### STEP 7



From the top of the bumper, locate the (4) 18mm bolts securing the bumper to the frame. Remove the (4) bolts, using a 12" extension or more may be required for the inner bolts.

### STEP 8



With a helper, pull the bumper away from the vehicle and set aside. Lifting/manipulating the bumper may be necessary.

If the vehicle is equipped with front proximity sensors, place the bumper on a workable surface and remove the wiring harness and sensors from the bumper.

## BARRICADE

---

### STEP 9



Remove (4) 7mm screws securing the air duct to the mounting brackets. Set the air duct aside at this time.

Remove the (8) 15mm bolts to remove the OEM air duct brackets.

### STEP 10

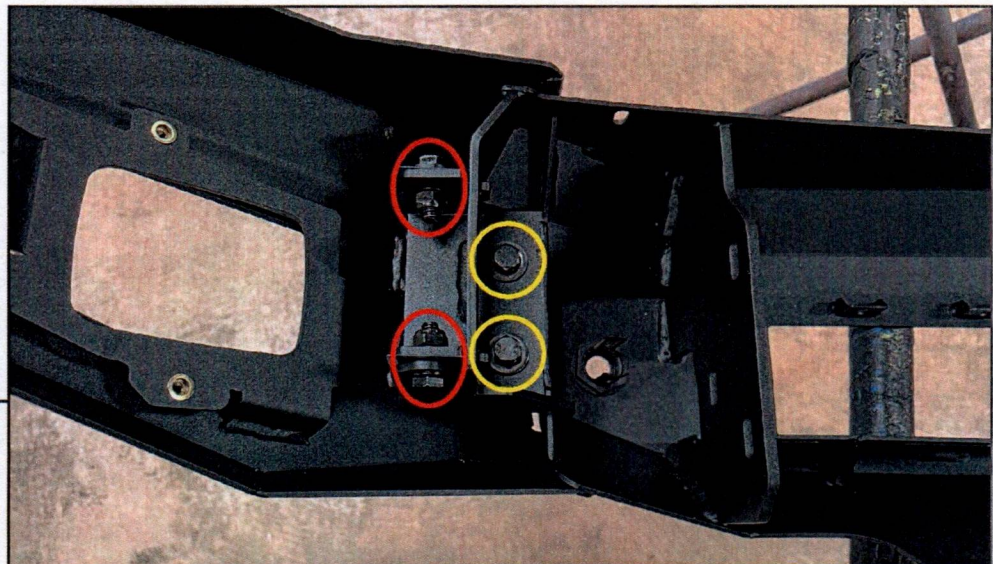


Remove the (2) 18mm bolts/nuts from each tow hook. Remove each tow hook from the vehicle frame.

Note: The tow hooks will be re-installed later.

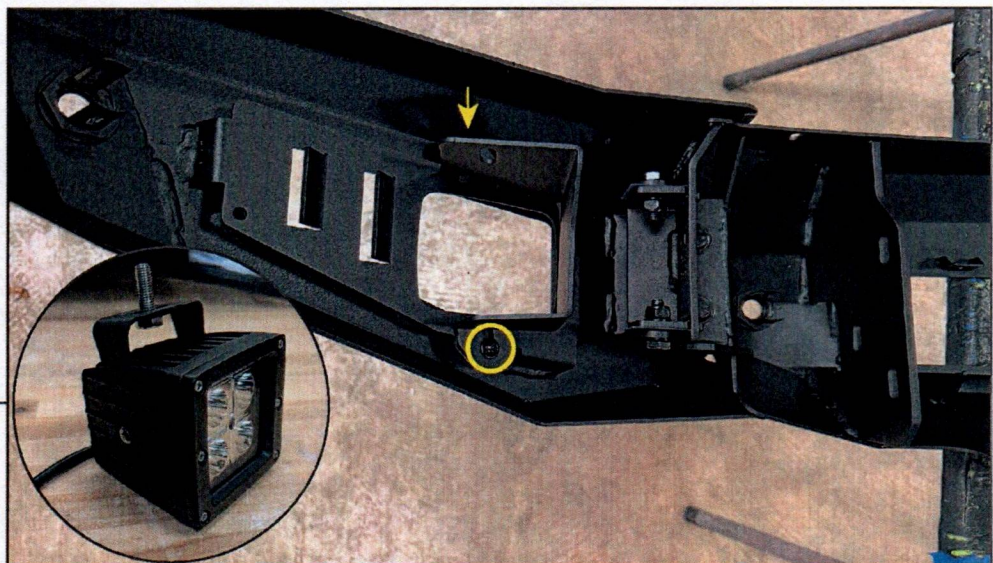
## BARRICADE

### STEP 11



Place the bumper on a workable surface. Fold the end caps outwards, and then secure the end caps in the open position using the included (2) M10 x 30mm bolts, (2) M10 lock washers, and (2) M10 flat washers per end cap. Ensure the pre-installed bolts used to hinge the end caps are fully tightened.

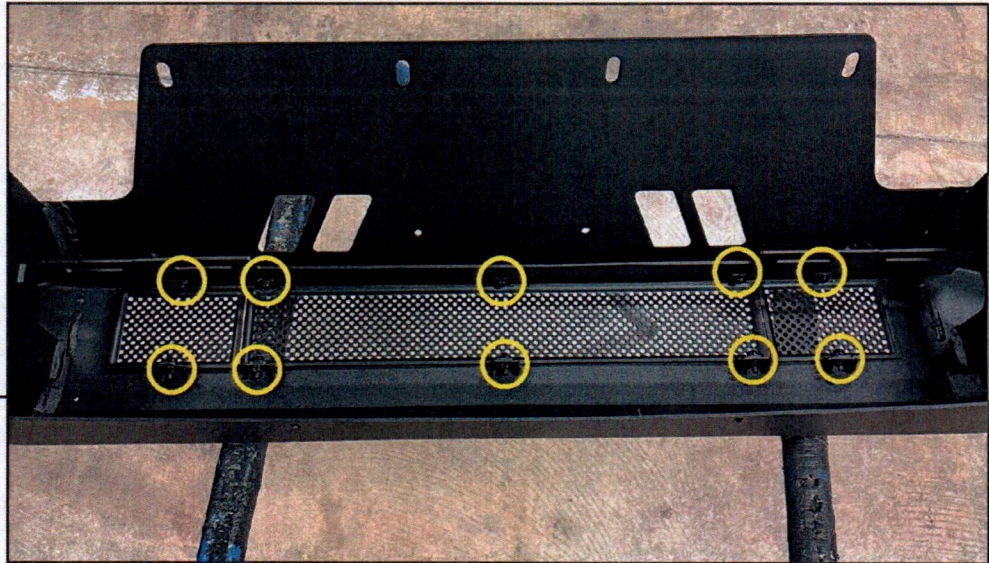
### STEP 12



Secure the LH and RH LED light enclosures to the bumper using (2) M6 x 20mm combo Allen bolts into the threaded inserts pre-installed in the bumper end caps.

Assemble the LED light brackets to the LED lights using (2) M6 x 12mm cap Allen bolts and (2) M6 lock washers. Then, secure the included LED lights to each enclosure using (1) M8 x 25mm hex bolt, (1) M8 lock washer, (1) M8 flat washer, and (1) M8 nut included in the lighting kit.

## **BARRICADE**

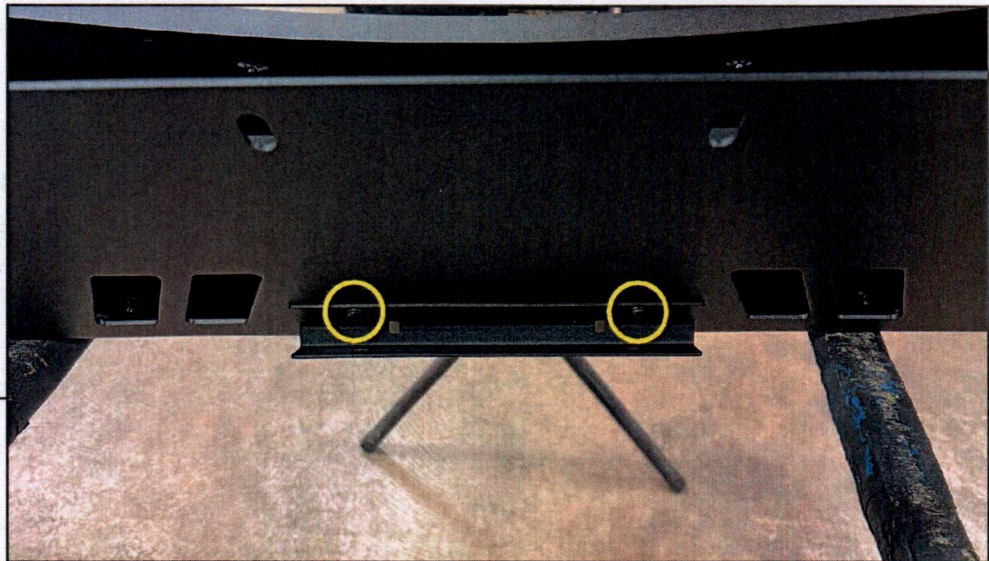


### **STEP 13**

Secure the LH, RH, and Center mesh panels to the bumper using (10) M6 x 20mm combo Allen bolts and (10) M6 flange nuts.

Note: Installing a light bar can be used instead of the grille panels using the included M8 hardware and "L" brackets. Light bar sold separately, SKU # T542547 [20"] OR T542548 [30"].

"L" Brackets: (2) M8 x 25mm Bolts, (2) M8 Lock Washers, (4) M8 Flat Washers, (2) M8 Nuts  
Light Bar to "L" Brackets: (2) M8 x 16mm Bolts, (2) M8 Lock Washers, (2) M8 Flat Washers



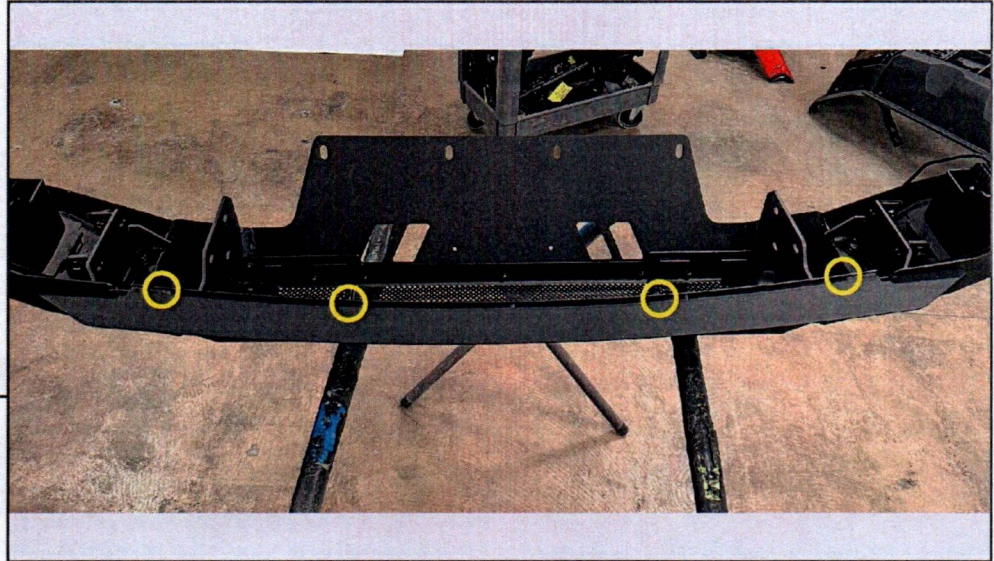
### **STEP 14**

If desired, secure the front license plate mounting bracket to the bottom of the bumper using (2) M6 x 20mm Allen bolts, (4) M6 flat washers [small OD], and (2) M6 lock nuts. Then, fit the (2) square plastic screw retainers into the square holes in the bracket.

Use OEM license plate screws to secure the license plate to the bracket.

## BARRICADE

---



### STEP 15

Install the upper filler panel to the top of the bumper using (4) M6 combo bolts into the welded nuts in the filler panel.

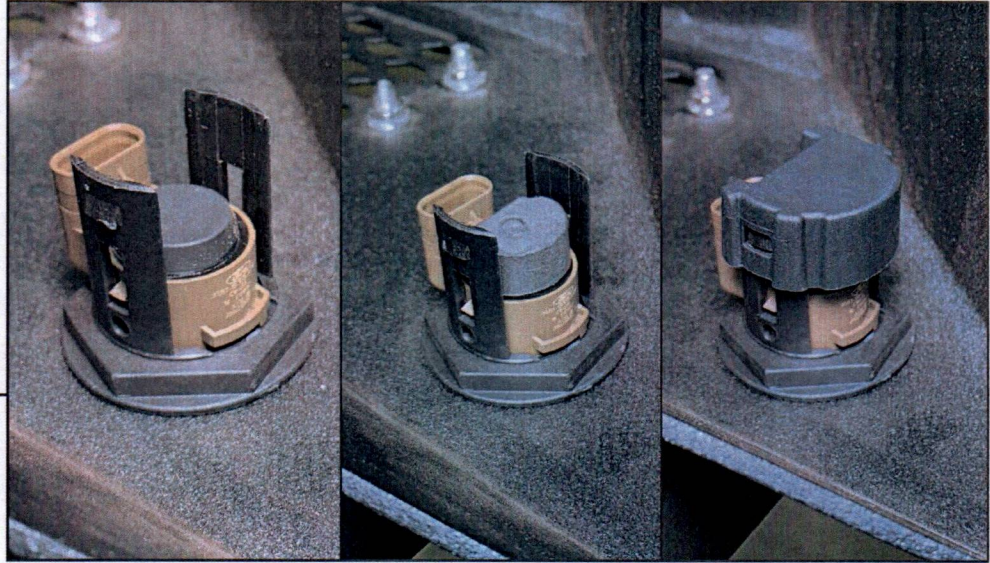


### STEP 16

**Proximity Sensors:** Remove the OEM silicone gasket from the end proximity sensor. Then, install the included foam gasket onto the face of the sensor.

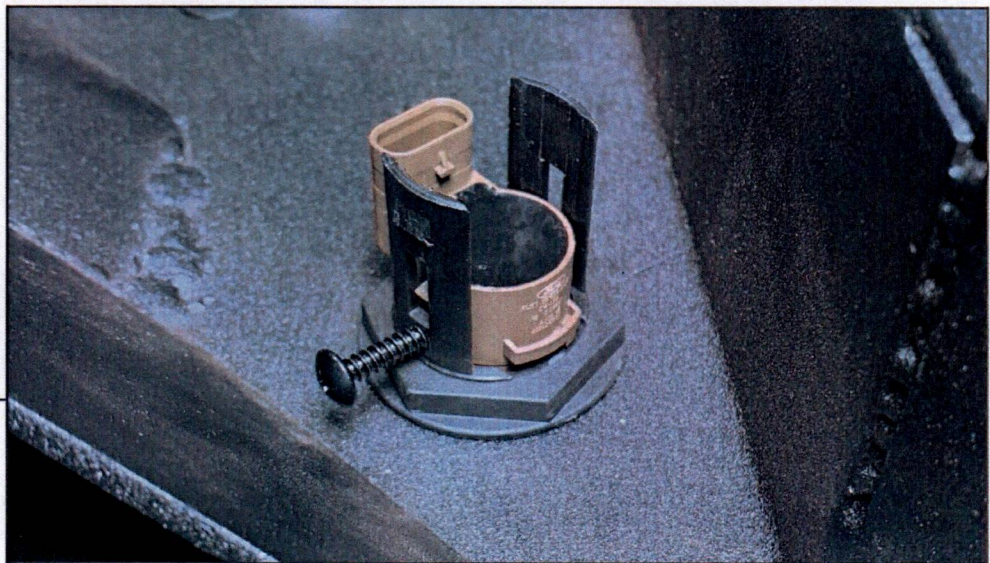
Vehicles without Proximity sensors, Skip to Step 19.

**STEP 17**



**Sensor Mounting Option 1:** Place the sensor into the designated port, ensuring the mounting tabs are within the slots. Adhere (1) rubber grommet to the sensor using the attached adhesive. Place (1) foam pad onto the rubber grommet. Place the (1) plastic cap onto the assembly, ensuring the (2) tabs lock into place to secure the sensor tightly to the port.

**STEP 18**

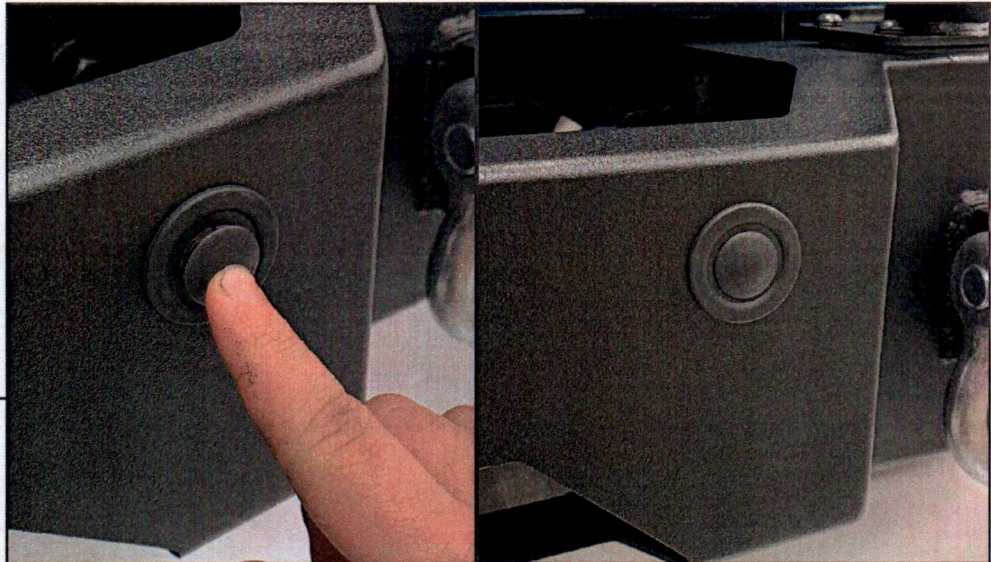


**Sensor Mounting Option 2:** Place the sensor into the designated port, ensuring the mounting tabs are within the slots. Using (2) Phillips screws, gently tighten the screws until moderate pressure is on the sides of the sensor to hold the sensor into place.

**Note:** Do NOT over-tighten the screws as the sensor can become damaged.

## BARRICADE

---



### STEP 19

**No Sensors:** Press the plastic cap into the backup sensor housing through the face of the bumper.



### STEP 20

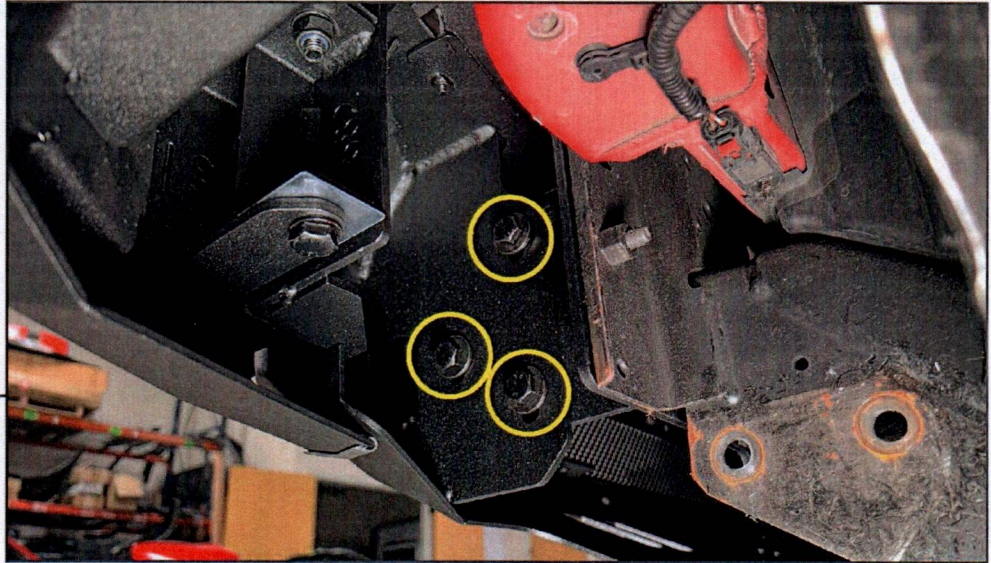
Using the original (3) 15mm bolts per bracket, fit the included bumper mounting brackets to the vehicle frame, excluding the inner-most lower bolts. Use the diagram above to ensure proper bracket fitment. Then, fit the included "S" brackets to the lower bolt holes, and secure into place. Secure the OEM air duct using (4) M6 x 20mm bolts, (8) M6 flat washers, and (4) M6 lock nuts.

Do not fully tighten the brackets at this time to allow for adjustments later.

## **BARRICADE**

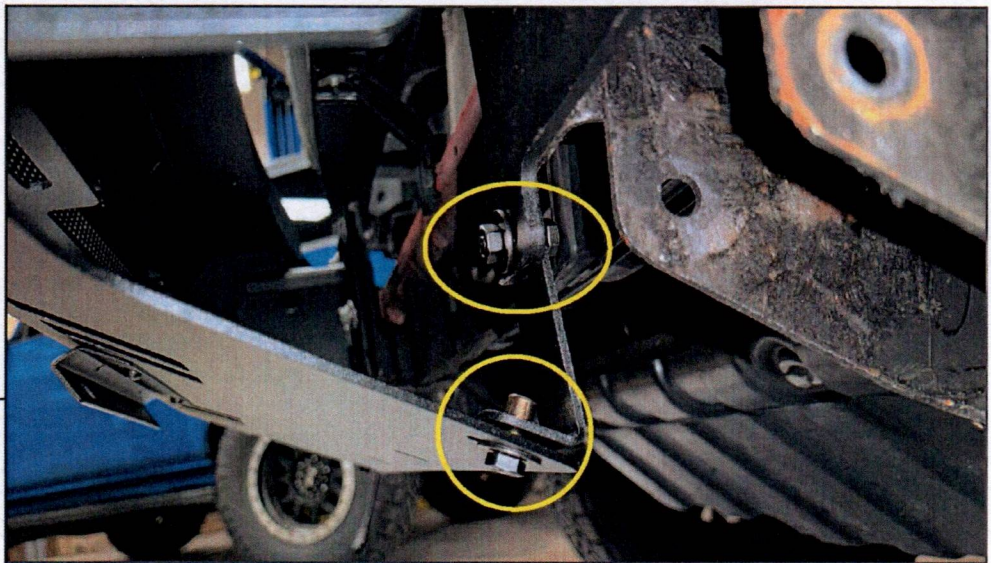
---

### **STEP 21**



With a helper, loosely secure the bumper to the outside of the previously installed mounting brackets using (6) M10 x 35mm hex bolts, (6) M10 lock washers, (12) M10 flat washers, and (6) M10 nuts.

### **STEP 22**

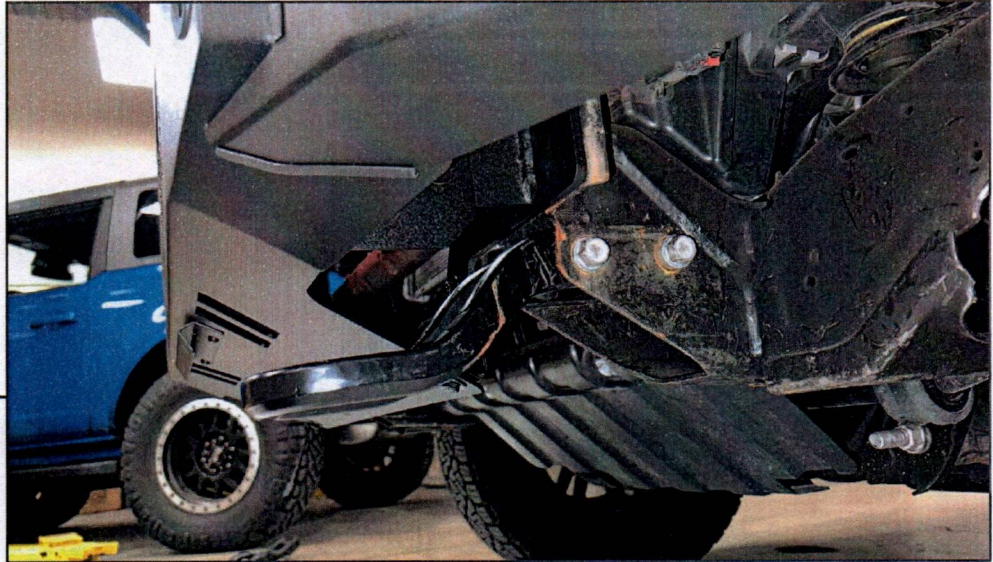


Using the included "L" brackets, secure the bottom of the bumper to the bumper mounting plates using (4) M8 x 25mm bolts, (4) M8 lock washers, (6) M8 flat washers, and (2) M8 nuts.

## BARRICADE

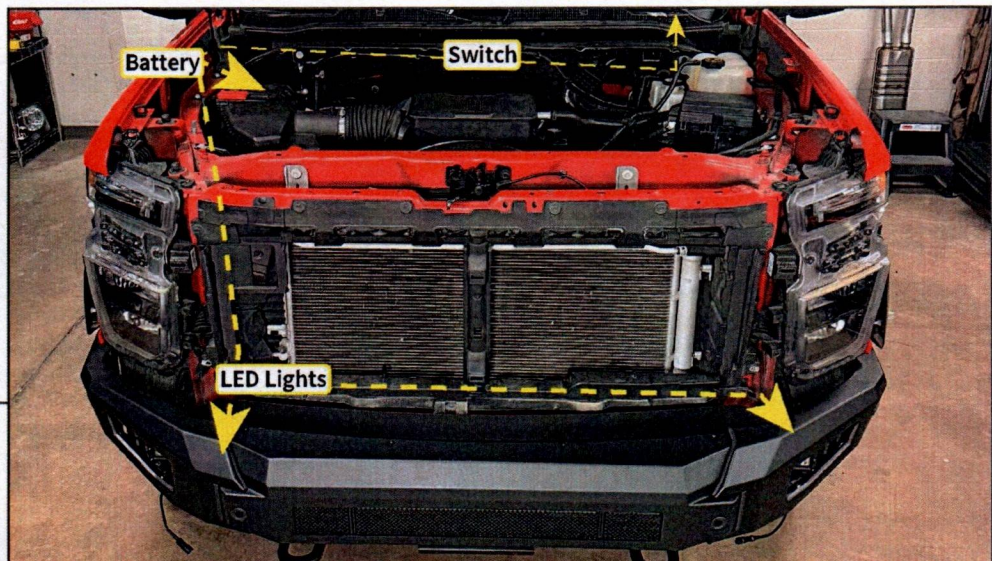
---

### STEP 23



Install the OEM tow hooks to the vehicle frame using the original hardware.

### STEP 24



Route the included LED light wiring harness throughout the engine bay following the diagram above. Ensure to route the harness away from any hot/moving components. Use the included (10) cable ties to ensure the harness is secure. Mount the relay to a suitable location in the vehicle engine bay.

Unplug the switch connector, and set the switch aside. Route the switch connector on the main harness towards the main firewall grommet below the brake master cylinder. Carefully cut a small slit in the grommet to allow for the switch connector to route into the vehicle interior.

## **BARRICADE**

---

### **STEP 23**



Re-install the grille, painted trim panels, radiator cover, and hood latch to the vehicle using OEM hardware. Then, adjust the bumper to best fit the vehicle panels. Once adjusted, tighten all mounting hardware until fully secure.

Neatly route the OEM wiring harness to each proximity sensor, if applicable. Use the included (4) extension harnesses if necessary. Transfer the block heater plug into the LH end cap, if applicable.

### **STEP 24**



Carefully trim the excess portion of the fender liner, if desired.

Installation is now complete.