



---

# FORMED RUNNING BOARDS WITH INTEGRATED LED LIGHTS

(2019-2025 SILVERADO - DOUBLE CAB)

---

## INSTALLATION INSTRUCTIONS

### CONTENTS

---

- (1) LH Running Board
- (1) RH Running Board
- (6) Running Board Brackets
- (12) M8x1.25 x 30mm Bolts
- (12) M8 Lock Washers
- (12) M8 Flat Washers
- (6) M6 Double Stud Plates
- (12) M6 Lock Washers
- (12) M6 Flat Washers
- (12) M6 Nuts
- (16) M5 x 16mm Allen Combo Kits
- (4) Puddle Lights
- (4) Puddle Light Brackets
- (8) M4x0.7 x 10mm Allen Bolts
- (1) LED Wiring Harness
- (4) Door Magnet Switches
- (8) Door Magnets w/ Die Cut 3M Tape
- (8) Adhesion Promoter Prep Pads
- (30) Cable Ties

### TOOLS REQUIRED

---

- 10mm, 13mm Socket/Wrench
- Ratchet
- Razor Knife
- Silicone Sealant
- Drill & Drill Bits

SKU # S220337  
Edited: 08/27/2025

## **BARRICADE**

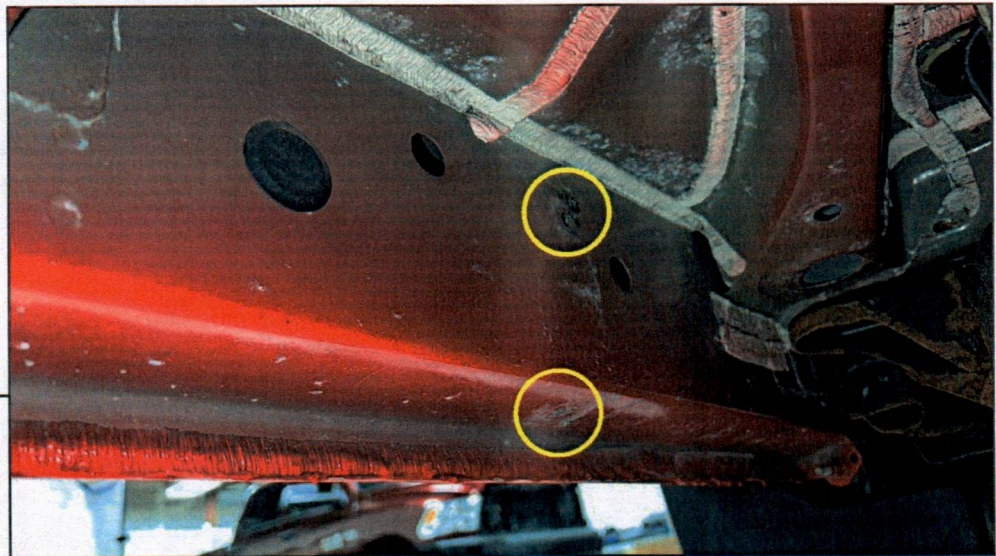
---

### **STEP 1**



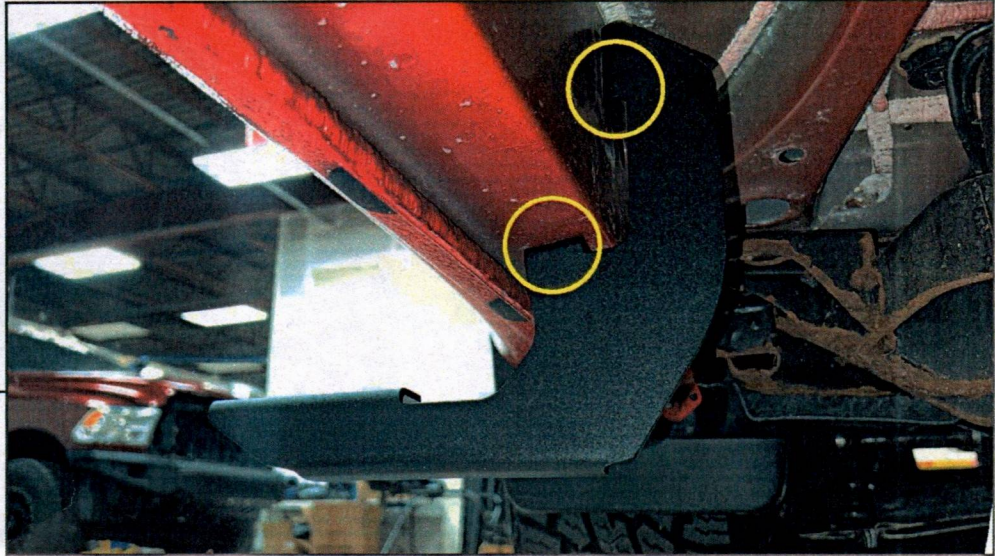
Lay out and identify the included brackets and hardware. All (8) mounting brackets are the same.

### **STEP 2**



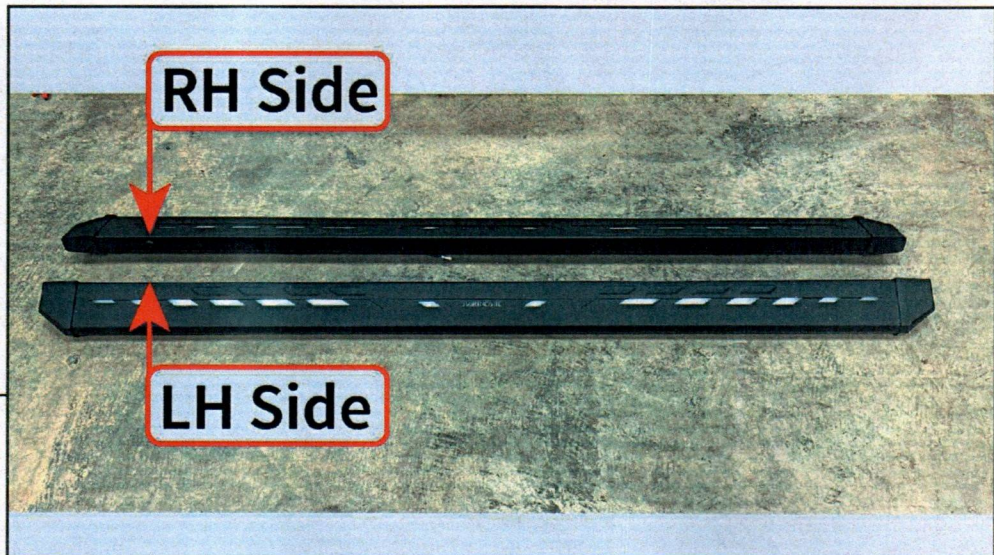
Locate the (6) vehicle threaded inserts in the vehicle body. These holes may be covered by paint matched tape. If covered, peel the tape to reveal the threaded inserts.

## BARRICADE



### STEP 3

Secure each mounting bracket to the vehicle body using (2) M8 x 30mm bolts, (2) M8 lock washers, and (2) M8 flat washers. Fully tighten the bottom bolt first, then secure the top.



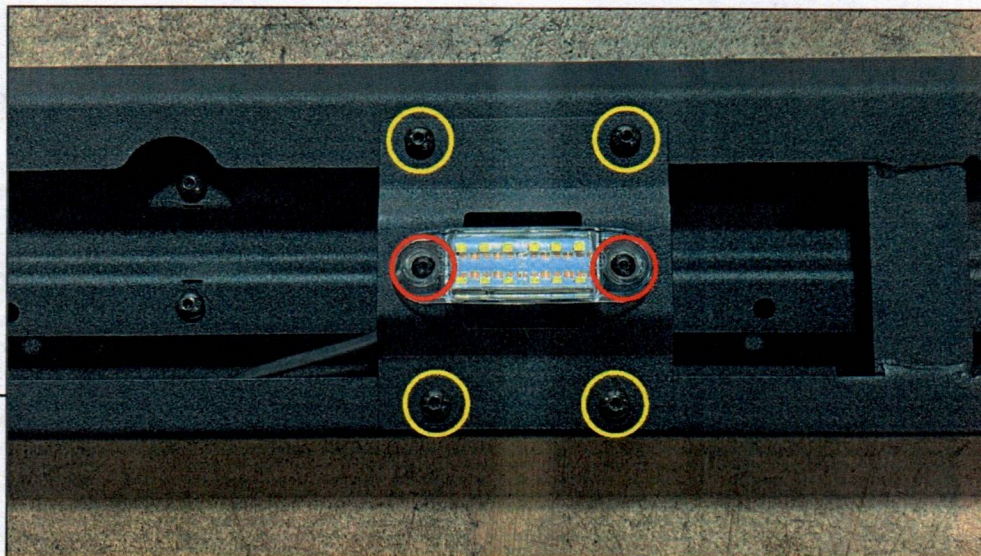
### STEP 4

Determine the LH and RH running boards by locating the wiring grommet along the inside edge of the running board. The grommet side of the running board will fit to the front of the vehicle when the running board is mounted to the vehicle.

## **BARRICADE**

---

### **STEP 5**



Secure the LED light mounting brackets to each side step using (4) M5 combo Allen bolts.

Mount the included (2) LED puddle lights to the mounting points on the bottom of the running board using (2) M4 x 10mm Allen bolts per LED light.

### **STEP 6**



Fit (3) M6 double stud plates into the running board. Then, fit the running board to the previously mounted brackets, ensuring the stud plates fit through the brackets.

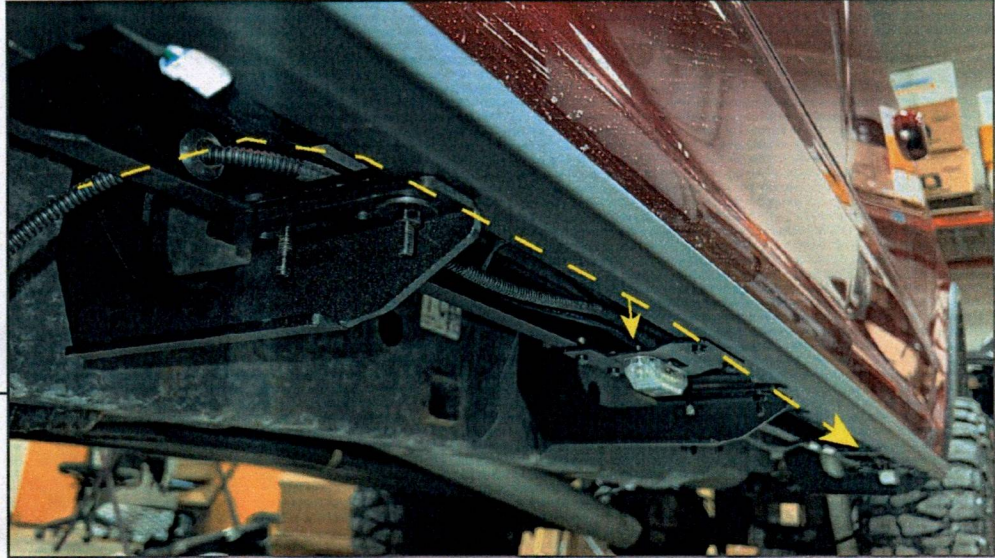
Adjust the running board to best fit the vehicle, and secure into place using (6) M6 flat washers, (6) M6 lock washers, and (6) M6 nuts.

Repeat Steps 1-6 to install the remaining running board to the vehicle.

## **BARRICADE**

---

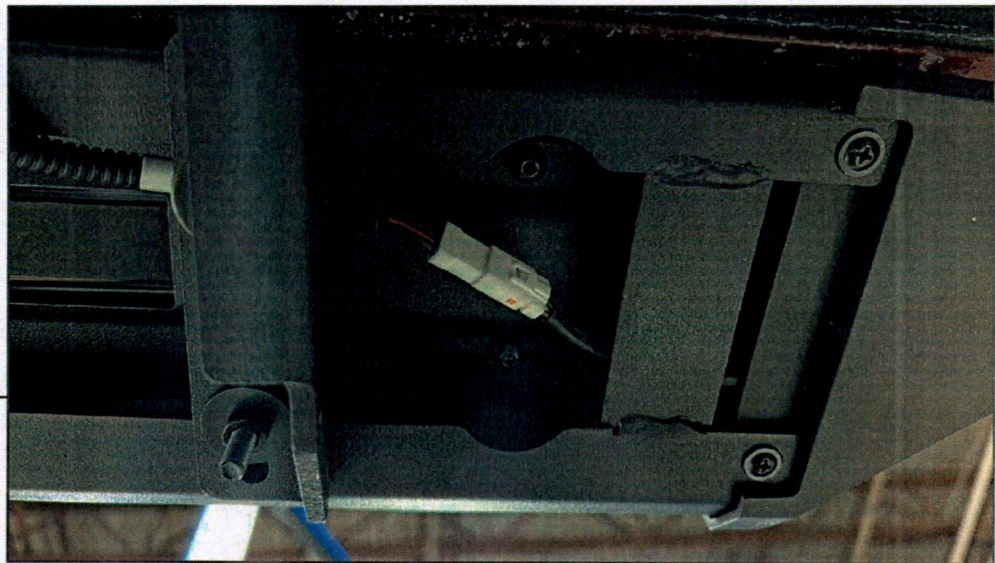
### **STEP 7**



Lay out and identify each end of the wiring harness. Take note to the labels on each wire lead.

Beginning at the LH side of the vehicle, route the "Puddle Lamp" harness leads into the RH side running board through the grommet. Then, plug the harness leads into each puddle lamp.

### **STEP 8**



Route the wiring harness neatly under the vehicle (along transmission crossmember) and repeat Step 7 for the RH side puddle lamps. Ensure the harness is away from hot/moving components.

Plug in the wire leads labeled "L-LED" and "R-LED" into the appropriate connector along the front of the running board.

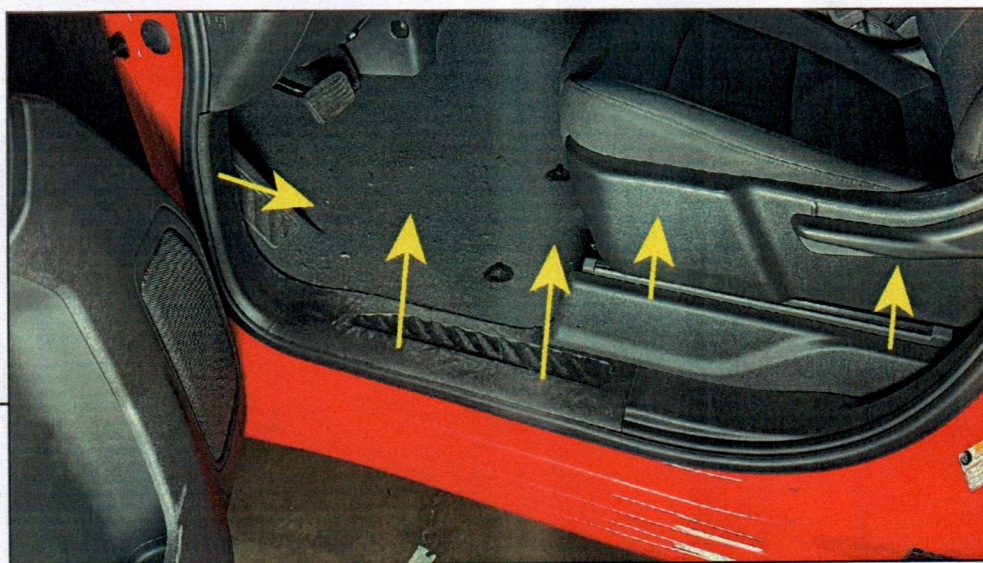
## BARRICADE

---



### STEP 9

Neatly route the wiring harness from the LH side of the vehicle along the frame towards the engine bay. Then, neatly route the harness across the engine bay to the battery. Do not connect the battery terminals at this time.



### STEP 10

Remove the front seat panel by lifting upwards to release the metal clips. Then, lift the door entry panel from the vehicle floor, and pull backwards to disengage from the firewall and set aside. Repeat this step for the remaining (3) vehicle door entry panels.

**Note:** The trim panels are only secured using press-in metal clips. Moderate force will be required to dislodge the panel from the body.

Repeat this step to the opposite side of the vehicle.

## BARRICADE

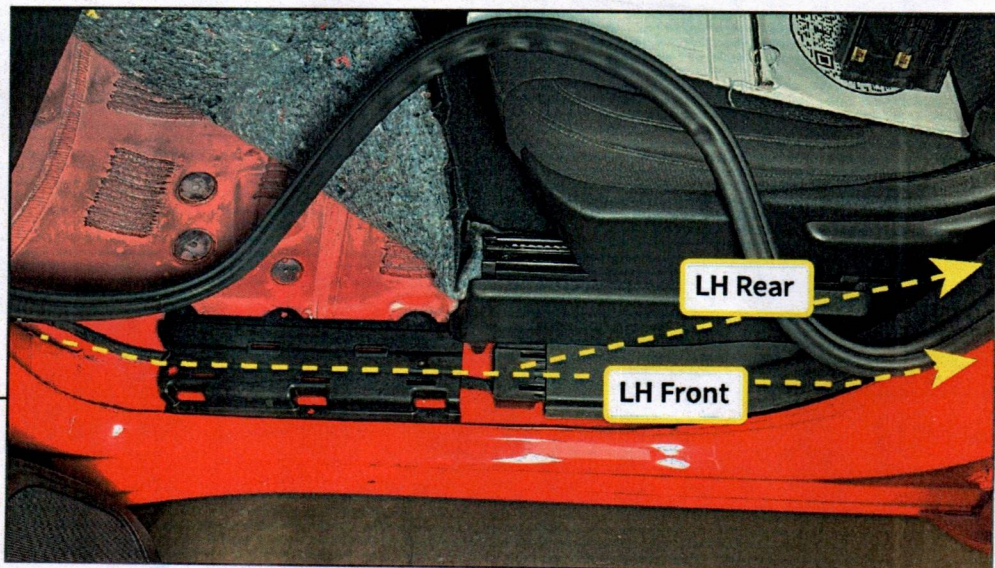


### STEP 11

Locate the pre-installed floor grommets in the vehicle floor. Drill a hole in the grommet to allow the running board harness to route to the previously mounted running boards.

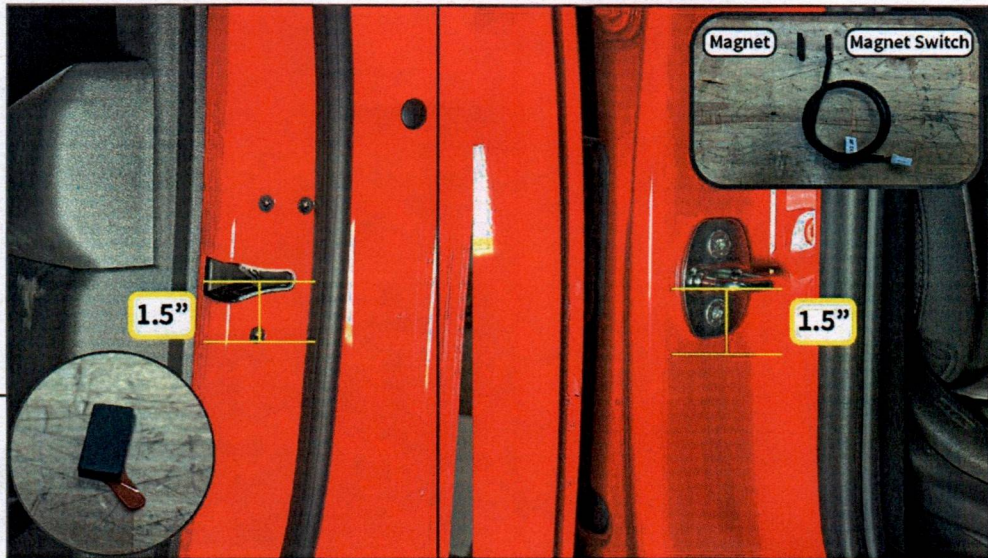
**Note:** At the end of the installation when all harnesses are neatly routed, silicone will be used to seal the floor grommet & harness.

Repeat this step to the opposite side of the vehicle.



### STEP 12

Lift the weatherseal around the door opening. Route the shorter wire lead in the harness upwards on the door opening towards the door striker.



**STEP 13**  
**[Front Door]**

Clean the vehicle door opening under the striker & the vehicle door under the latch assembly using (1) alcohol prep pad, and allow to fully dry.

**Door Switch:** Peel the tape backing, and adhere the switch to the door under the striker.

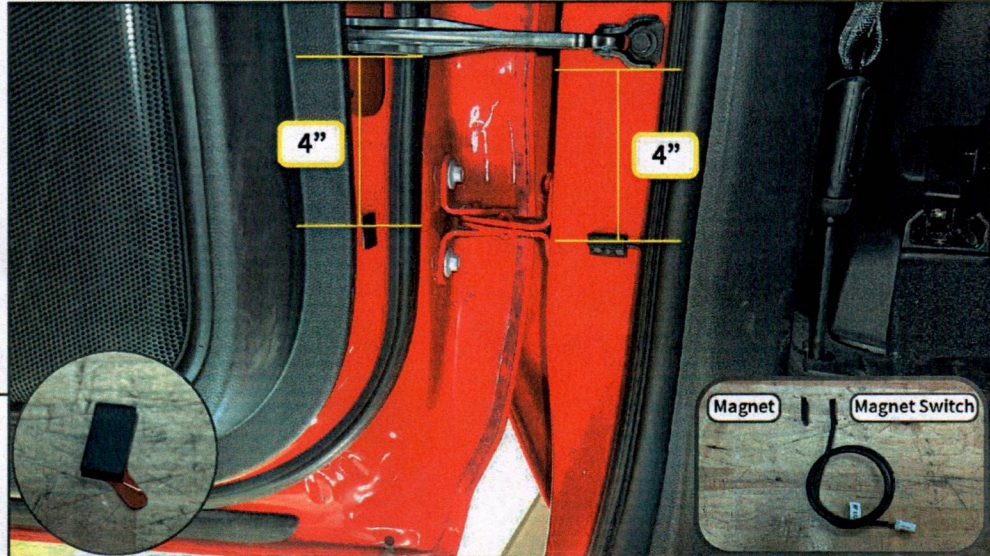
**Magnet:** Peel the tape backing, and adhere the magnet to the lower bolt on the door latch.

Plug in the door switch, and re-install the weatherseal and door sill trim to the door opening.



**STEP 14**  
**[Rear Door]**

Route the remaining door switch lead under the vehicle B-Pillar trim towards the rear door. Then, remove the rear seat door sill trim and weatherseal.

**STEP 15**  
**[Rear Door]**

Clean the vehicle door opening & vehicle door under the door limiting bar using (1) alcohol prep pad, and allow to fully dry.

**Door Switch:** Peel the tape backing, and adhere the switch 4" under the door limiting bar.  
**Magnet:** Peel the tape backing, and adhere the magnet 4" below the door limiting bar.

Plug in the door switch, and re-install the weatherseal and door sill trim to the door opening.

**STEP 16**

Complete door switch wiring/routing on the opposite side of the vehicle. Connect the wire harness to the battery using the diagram above. Secure the harnesses under the running boards using the included cable ties.

Close all doors, then open each door one at a time to verify functionality. The lighting will only power on when a door is open. If the lighting does not power off with the doors closed, verify magnet and switch locations. Installation is now complete.