



**IF YOUR ReadyLIFT PRODUCT IS MISSING A PART  
OR HAS A DAMAGED PART, PLEASE  
CONTACT CUSTOMER SERVICE DIRECTLY.**

**A NEW REPLACEMENT PART WILL BE SENT TO YOU IMMEDIATELY**

**(877) 759-9991**

**MON-FRI 7AM-5PM PST**

**OR**

**EMAIL: INFO@ReadyLIFT.COM**

**WEBSITE: ReadyLIFT.COM**

**\*\*Please retain this document in your vehicle at all times\*\***

### **ReadyLIFT Limited Lifetime NO Fine Print Warranty**

**This unique product warranty proves our commitment to the quality and reliability of every product that ReadyLIFT manufactures. The ReadyLIFT warranty does not include shock absorbers.**

**The ReadyLIFT product warranty only extends to the original purchaser of any ReadyLIFT product, if it breaks, we will give you a new part. Warranty does not apply to discontinued parts**

Product purchased directly from ReadyLIFT has a 30 day return policy on uninstalled products from the date of purchase. Uninstalled product returns must be in the original ReadyLIFT packaging. Please call **(877) 759-9991** to get an RGA# for any return. Customer is responsible for shipping costs back to ReadyLIFT. **Returns without RGA# will be refused.** Contact ReadyLIFT directly about any potentially defective parts prior to removal from vehicle. If the part in question is deemed warrantable an RGA# will be assigned and can be returned for repair or replacement. Replacement parts required prior to warranty claim completion must be purchased. Upon receipt and verification of deemed warranty parts claim, a credit or refund can then be processed to complete warranty claim transaction.

ReadyLIFT products are **NOT** intended for off-road abuse. Any damage or failure as a result from off-road abuse voids the warranty of the ReadyLIFT product. ReadyLIFT is **NOT** responsible for any subsequent damages to any related vehicle parts due to misuse, abuse, improper installation, or lack of maintenance. Furthermore, ReadyLIFT reserves the right to change, modify or cancel this warranty without prior notice.

**[www.ReadyLIFT.com](http://www.ReadyLIFT.com)**

**Please read Instructions thoroughly and completely before beginning installation.  
Installation by a certified mechanic is recommended.**

**ReadyLIFT Suspension Inc. is NOT responsible for any damage or failure resulting from improper installation.**

**Safety Warning:** Suspension systems or components that enhance the on and off-road performance of your vehicle may cause it to handle differently than it did from the factory. Extreme care must be used to prevent loss of control or vehicle rollover during abrupt maneuvers. Always operate your vehicle at reduced speeds to ensure your ability to control your vehicle under all driving conditions. Failure to drive safely may result in serious injury or death to driver and passengers. Driver and passengers must ALWAYS wear your seat belts, avoid quick sharp turns and other sudden maneuvers. ReadyLIFT Suspension Inc. does not recommend the combined use of suspension lifts, body lifts, or other lifting devices. You should never operate your vehicle under the influence of alcohol or drugs. Constant maintenance is required to keep your vehicle safe. Thoroughly inspect your vehicle before and after every off-road use.

**Installation Warning:** All steps and procedures described in these instructions were performed while the vehicle was properly supported on a two post vehicle lift with safety jacks. Use caution during all disassembly and assembly steps to insure suspension components are not over extended causing damage to any vehicle components and parts included in this kit. Included instructions are guidelines only for recommended procedures and are not meant to be definitive. Installer is responsible to insure a safe and controllable vehicle after performing modifications.

ReadyLIFT Suspension Inc. recommends the use of an OE Service Manual for model/year of vehicle when disassembly and assembly of factory and related components. Unless otherwise specified, tighten all bolts and fasteners to standard torque specifications listed within the OE Service Manual, or as referenced in the torque specification list provided in these instructions.

Suspension components that use rubber or urethane bushings should be tightened with the vehicle at normal ride height. This will prevent premature wear or failure of the bushing and maintain ride comfort. Larger tire and wheel combinations may increase leverage on suspension, steering, and related components. Due to payload options and initial ride height variances, the amount of lift is a base figure. Final ride height dimensions may vary in accordance to original vehicle ride height. Always measure the vehicle ride height prior to beginning installation.

### Vehicle ride height chart

**Driver Front:  
Stock height**

**Lift installed**

**Driver Rear:  
Stock height**

**Lift installed**

**Pass. Front:  
Stock height**

**Lift installed**

**Pass. Rear:  
Stock height**

**Lift installed**

<b>Bolt Size Millimeters</b>	<b>Torque Specs in FT/LB</b>		<b>Bolt Size SAE</b>	<b>Torque Specs in FT/LB</b>	
	<b>Metric Grade 8.8</b>	<b>Metric Grade 10.9</b>		<b>Grade 5</b>	<b>Grade 8</b>
<b>6mm</b>	<b>6</b>	<b>8</b>	<b>5/16</b>	<b>15</b>	<b>20</b>
<b>8mm</b>	<b>16</b>	<b>22</b>	<b>3/8</b>	<b>30</b>	<b>35</b>
<b>10mm</b>	<b>40</b>	<b>45</b>	<b>7/16</b>	<b>45</b>	<b>60</b>
<b>12mm</b>	<b>54</b>	<b>70</b>	<b>1/2</b>	<b>65</b>	<b>90</b>
<b>14mm</b>	<b>89</b>	<b>117</b>	<b>9/16</b>	<b>95</b>	<b>130</b>
<b>16mm</b>	<b>132</b>	<b>175</b>	<b>5/8</b>	<b>135</b>	<b>175</b>
<b>18mm</b>	<b>182</b>	<b>236</b>	<b>3/4</b>	<b>185</b>	<b>280</b>

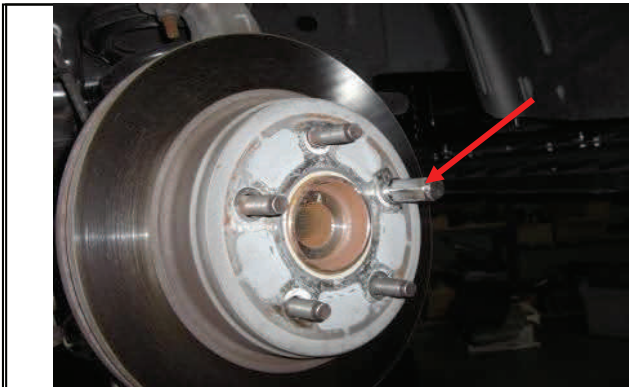
## Installation Instructions (69-1035)



Place vehicle on level ground, properly lift and support.



Remove front wheels and tires



Place a lug nut back onto any wheel stud as shown



Remove brake calipers



Disconnect ABS line at or behind fender liner.



Disconnect upper shock mount and bushing



Disconnect lower shock mounting bolts.



Disconnect upper sway bar end links and bushings

## Installation Instructions (69-1035)



Disconnect tie rod end nut and break loose with hammer



Loosen upper ball joint nut and break loose with hammer.

Break loose tie rod/upper ball joint  
No photo

While supporting suspension, remove upper ball joint nut



Slowly lower suspension and remove coil spring.



Remove upper isolator and replace with new ReadyLIFT hat.



Reinstall coil spring and properly clock in lower control arm.



Carefully lift suspension enough to engage upper ball joint.



Reconnect brake calipers, sway bar end links, and tie rods.

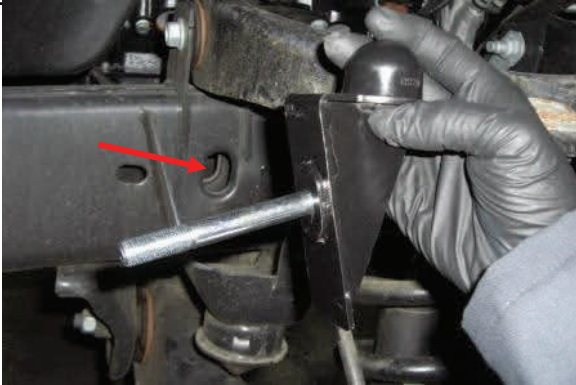
## Installation Instructions (69-1035)



Install and tighten new upper shock extension



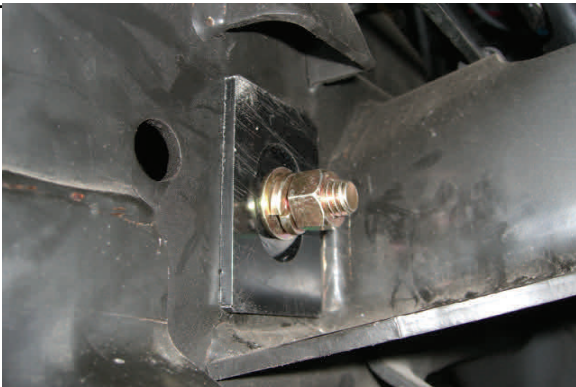
Reuse OE bushings and hardware top and bottom.



Attach new bump stop and bracket to frame as pictured



Note: pass/dr side brackets are specific. Tighten once aligned



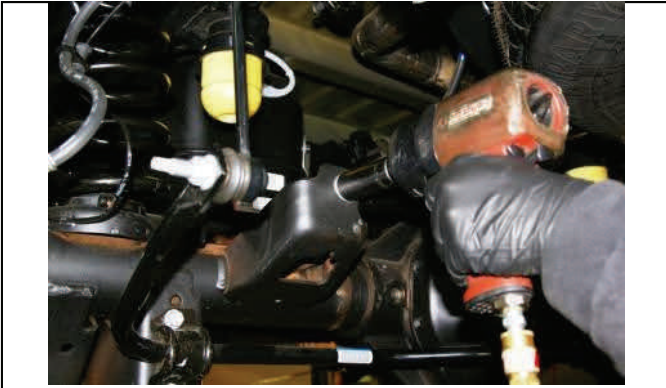
Picture shows inner frame bracket and hardware installed.



Reconnect ABS lines.

Torque all hardware to factory spec and recheck to ensure there is proper clearance and slack for ABS lines to travel through entire suspension range. Reinstall and torque wheels and tires, test drive and have vehicle aligned.

## Installation Instructions (69-1035)



Support rear suspension and remove rear trac bar bolt



Disconnect upper sway bar end links.



Disconnect ABS lines to avoid damage during installation.



Remove lower shock mounting hardware.



Carefully lower axle, remove spring and upper rubber isolator



Use provided hardware to fasten new spacer and tighten.



Reinstall OE isolator and coil spring, raise suspension.



Reattach shocks, trac bar, sway bar end links, and ABS lines

## **Final Checks & Adjustments**

**Post Installation Warnings:** Once the vehicle is lowered to the ground, check all parts which have rubber or urethane components to insure proper torque. Torque wheels to factory specs. Move vehicle backwards and forwards a short distance to allow suspension components to adjust. Turn the front wheels completely left then right and verify adequate tire, wheel, brake line, and ABS wire clearance. Test and inspect steering, brake and suspension components for tightness and proper operation. Inspect brakes hoses and ABS lines for adequate slack at full extension. Failure to perform the post inspection checks may result in vehicle component damage and/or personal injury or death to driver and/or passengers. Test drive vehicle and re-check the torque of all fasteners and re-torque wheels on vehicle. Re-adjust headlamps.

**Vehicle Handling Warning:** Vehicles with larger tires and wheels will handle differently than stock vehicles. Take time to familiarize yourself with the handling of your vehicle.

### **Wheel Alignment/Headlamp Adjustment:**

**It is necessary to have a proper and professional wheel alignment performed by a certified alignment technician. Align the vehicle to factory specifications. It is recommended that your vehicle alignment be checked after any off-road driving. In addition to your vehicle alignment, for your safety and others, it is necessary to check and adjust your vehicle headlamps for proper aim and alignment**

### **Vehicle Re-Torque and Safety Inspection:**

Upon completion of all services and adjustments performed on your vehicle, and within 50 miles of driving, check to ensure all fasteners and hardware are properly torqued to specification as noted in the vehicles factory service manual or the torque chart included.

**[WWW.ReadyLIFT.com](http://WWW.ReadyLIFT.com)**

**ReadyLIFT Suspension Inc.  
7490 Commercial Way  
Henderson, NV 89011  
Phone: (702)410-2300  
Fax: (702)410-2794  
Toll Free: (877) 759-9991  
Email: [Info@ReadyLIFT.com](mailto:Info@ReadyLIFT.com)**