



**PART# 702145**

**2002-2022 RAM 1500 2WD (5 LUG)**

**4.5" FRONT LIFT SPINDLES**



**3 HOUR INSTALL TIME**



**WARNING**

Max Trac Suspension recommends using an 17" x 9" wheel w/ 5.5" back spacing. Any wheel that is wider or has less back spacing "i.e. Deep Dish Wheels" can cause component failure and will void the warranty. Max Trac Suspension also recommends using a 35" x 11.5" tire with the spindle only or a 37" x 12.5" tire when combining a lift coil with our spindle.

Components	Hardware
(1) 702145D DRIVE SIDE SPINDLE	(2) 1/4" ADEL CLAMP
(1) 702145 PASSENGER SIDE SPINDLE	(2) 3/8" ADEL CLAMP
(2) 512100 EXTENDED BRAKE LINE (06-22)	(4) M14-1.5 X 80 HEX CAP SCREW (10.9)
(2) 7021FB BRAKE LINE BRACKETS (02-05)	(4) M14 FLAT WASHER
	(4) M6-1.0 X 16 HEX CAP SCREW
	(4) M6 FLAT WASHER
	(2) 1/4-20 X 3/4" HEX CAP SCREW
	(2) 1/4-20 NYLOCK NUT
	(4) 1/4" FLAT WASHER

**NOTE:**

- THE PROVIDED BRAKE LINES ARE FOR 2006-2022 MODELS.
- 2002-2005 MODELS WILL USE THE PROVIDED BRAKE LINE BRACKETS
- IT IS VERY IMPORTANT TO CONTINUALLY SAFETY CHECK BALL JOINTS, ROD ENDS, & WHEEL BEARINGS "ESPECIALLY IF RUNNING LARGE WHEELS"
- SPINDLE FAILURE DUE TO A FAILED WHEEL BEARING WILL NOT BE COVERED UNDER WARRANTY
- RUNNING DEEP DISH WHEELS VOIDS THE WARRANTY OF THESE SPINDLES

Please double check the parts list before beginning installation to ensure all parts are present. If there is something missing, please contact Maxtrac Suspension (714) 630-0363. Please have the boxes present if parts are missing or damaged

**PRIOR TO INSTALLATION:**

1. Factory service manual is recommended to have on hand.
2. Secure and properly block vehicle prior to beginning installation.
3. Always wear safety glasses when using power tools or working under the vehicle
- 4 Modification to any part will void the warranty associated with that product

AFTER REMOVING PARTS FROM VEHICLE, SAVE HARDWARE FOR REINSTALLATION

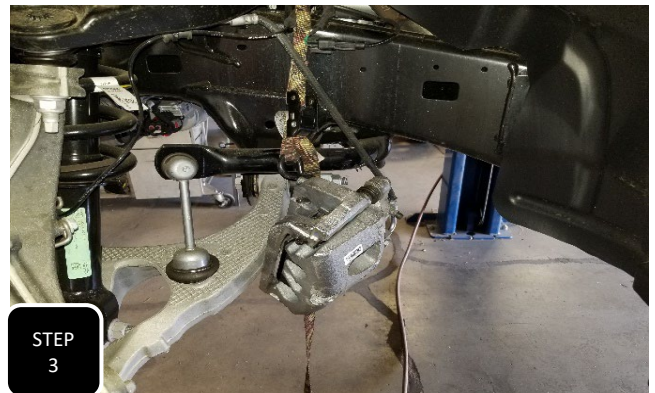
EDITED 3/20/2025



**Step 1** Jack up the front of the vehicle and support under the frame rails with jack stands. Remove both front tires and proceed with one side at a time.



**Step 2** Unbolt the nut at the tie rod and break it loose by hitting the spindle with a hammer, right at the tie rod. **NOTE: NEVER HIT THE TIE ROD ON THE THREADS.**



**Step 3** Unbolt the brake caliper and support out of the way with a strap. **NOTE: NEVER ALLOW THE CALIPER TO HANG FROM THE BRAKE LINE.**



**Step 4** Remove the rotor and place it off to the side. Next, unbolt the ABS sensor and swing it safely out of the way so it does not get damaged during the install.



**Step 5** Unbolt the 3 wheel bearing mounting bolts and remove the hub assembly. **NOTE: THE FACTORY DUST SHIELD WILL NOT GET RE-INSTALLED.**



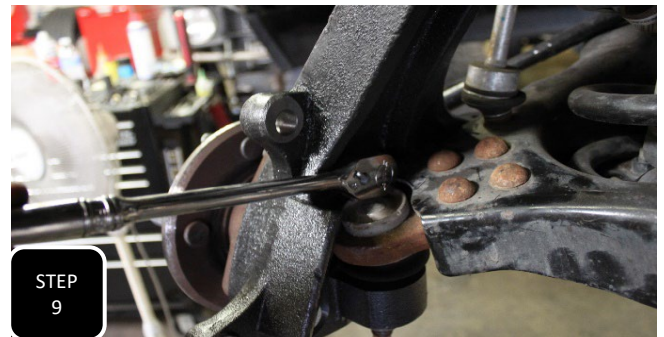
**Step 6** Loosen the upper ball joint nut, but do not remove. Next, break the ball joint loose by hitting the side of the spindle, right at the ball joint, with a hammer. The nut will catch the spindle then remove the nut. **NOTE: NEVER HIT THE BALL JOINT ON THE THREADS.**



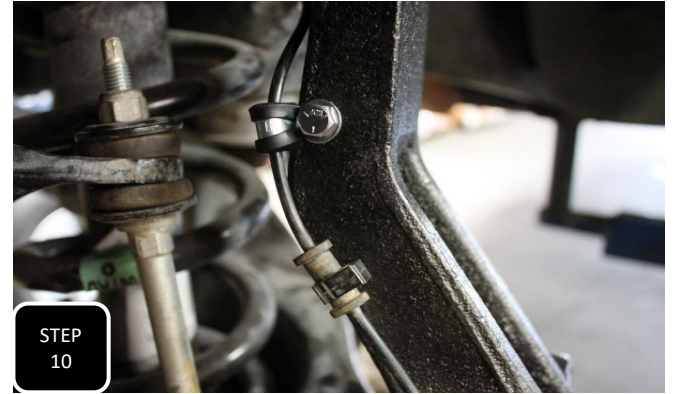
**Step 7** Loosen the lower ball joint nut, but do not remove. Next, break the ball joint loose by hitting the side of the spindle, right at the ball joint, with a hammer. The nut will catch the spindle then remove both the nut and the spindle. **NOTE: NEVER HIT THE BALL JOINT ON THE THREADS.**



**Step 8** Locate the new spindle that matches the orientation of the spindle that you just removed and install it. The lower ball joint will get torqued to 150 ft/lbs. The upper ball joint has limited access and will get tightened down using a 12 point, 21mm combination wrench. **NOTE: IF THE UPPER BALL JOINT SPINS WHEN TIGHTENING, USE A PRY BAR ON TOP OF THE UPPER CONTROL ARM TO WEDGE THE BALL JOINT INTO THE TAPERED HOLE WHILE TIGHTENING.**



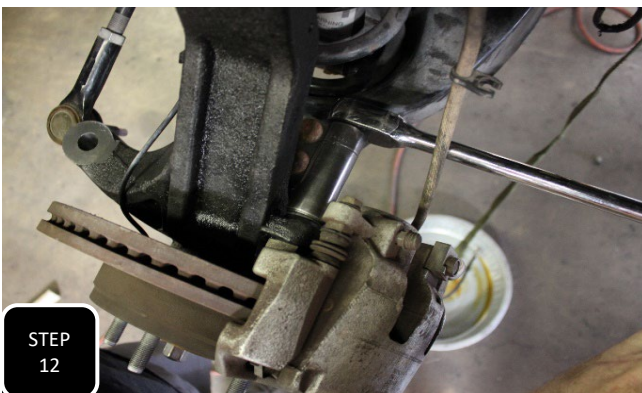
**Step 9** Install the wheel bearing "without" the factory dust shield. You will use two of the provided M14 bolts for the lower two mounting bolts and one factory mounting bolt for the top mounting bolt. All 3 bolts will get torqued to 120 ft/lbs.



**Step 10** Install the ABS sensor using the factory allen bolt. Next, route the ABS line up the neck of the spindle and attach it to the neck of the spindle at one point with the factory plastic clip, and just above that with the provided 1/4" Adel clamp and provided M6 bolt.



**Step 11** Slide the brake rotor onto the wheel bearing. Next, unbolt the brake line at the frame and slightly stretch the factory harline so it is easier to access the hardline to soft line connection.



**Step 12** Attach the brake caliper to the spindle using the factory bolts and torque to 80 ft/lbs.



**Step 13** Using a line wrench, break loose the soft brake line from the hard brake line and then unbolt the soft brake line from the brake caliper.



**Step 14** Attach the new, extended brake line to the hard line at the frame first and allow fluid to run through the line before attaching it to the brake caliper. Next, attach the brake line to the brake caliper using the factory banjo bolt and the provided copper crush washers. **NOTE: THE BRAKE LINE SHOULD BE POINTED STRAIGHT UP FROM THE CALIPER.**



**Step 15** Push the end of the soft line up against the frame and attach using the provided "U" shaped clip and tap it into place using a hammer. Next, attach the brake line to the neck of the spindle using the supplied 3/8" Adell clamp and M6 bolt. **NOTE: YOU WANT THE LINE TIGHT FROM THE CALIPER TO THE CLAMP TO CREATE AS MUCH SLACK AS POSSIBLE BETWEEN THE CLAMP AND FRAME MOUNT.**



**REPEAT STEPS 1-16 ON THE OTHER SIDE**

STEP  
16

**Step 16** Re-attach the tie rod to the steering arm of the spindle and torque to 75 ft/lbs.



**PROPER BRAKELINE ROUTING**

## 2002-2005 BRAKE LINE BRACKET INSTALL



STEP  
17



STEP  
17

**Step 17** Starting with the driver's side, unbolt the mounting bracket closest to the soft line. Next, gently bend the hard line downward and outward to make room for the new bracket. Lastly, slightly unravel the mounting bracket on the hardline so that it is at about a 30 degree angle.



**Step 18** Attach the new brake line bracket to the frame using the factory bolt and then to the bracket on the stock hardline using the provided 1/4" hardware and tighten.



**Step 19** The passenger side is much simpler and only requires unbolting, pulling the hard brake line down, and then attaching the provided bracket. If you would like, the provided brake lines, although intended for the 2006-2022 models, will fit on the this side of the truck.

-Make sure to check the vehicle's tow before driving.

-The headlights should be adjusted after modifying the stance of the vehicle.

-The vehicle's alignment will need to be adjusted.

-All suspension components should be re-torqued after 500 miles.



**MaxTrac**  
s u s p e n s i o n

## RIDE HEIGHT SHEET

\*THIS SHEET MUST BE FILLED OUT PRIOR TO CALLING WITH ANY DISCREPENCIES

YEAR \_\_\_\_\_ MAKE \_\_\_\_\_ MODEL \_\_\_\_\_

4WD / 2WD / AWD

### MEASUREMENTS

\*MOST ACCURATE MEASUREMENT IS FROM THE BOTTOM OF THE RIM, STRAIGHT UP TO THE BOTTOM OF THE FENDER

\*TRUE HEIGHT WONT BE ACCURATE UNTIL VEHICAL IS ALIGNED

\*THE VEHICLE'S CASTER WILL BE INCREASED OR DECREASED IF ONLY THE FRONT OF THE VEHICLE IS MODIFIED

	BEFORE	AFTER	DIFFERENCE
DRIVER FRONT	_____	_____	_____
DRIVER REAR	_____	_____	_____
PASSENGER FRONT	_____	_____	_____
PASSENGER REAR	_____	_____	_____

# LIMITED LIFETIME WARRANTY

Max Trac Suspension makes no warranty, expressed or implied, as to the merchantability, fitness for purpose, description, quality, productiveness, accuracy or any other matter with respect to every product, all such warranties being hereby specifically and expressly disclaimed by Max Trac. Max Trac may offer technical advice or assistance with regard to the products based on laboratory and/or field experience and customer understands and agrees that such advice represents only good faith opinions and does not constitute a warranty or guarantee. The sole and express warranty provided by Max Trac is to warrant that the products sold as listed comply with Max Trac's specification at the date and time of manufacture. Max Trac makes no warranty that such products shall meet such specification at any time after installation of products. Use of such product is specifically not warranted, and Max Trac specifically excludes from this express warranty parts subject to normal wear and tear after one year, finish after one year, damage resulting from failure to follow recommendations in installation manuals, competition or off-road use, and damages caused by aftermarket products. Max Trac's liability and customer's exclusive remedy for any breach of this limited express warranty is limited to repair, replacement, or refund at Max Trac's option and in Max Trac's sole discretion. There are no warranties which extend beyond the description on the face hereof.

Our limited lifetime warranty excludes the following items: bushings, bump stops, ball joints, tie rod ends, rod end/heim joints, and shock absorbers. These parts are subject to immediate wear and tear and are not considered defective when worn. They are warranted for twelve (12) months from the date of purchase only for defects in workmanship.

This Max Trac warranty is void if (1) the vehicle is not aligned after kit installation, (2) proper maintenance is not routinely performed, (3) the Max Trac products are misused or abused in any way in either installation or service, or (4) the products are used in a way that violates federal, state, or local law or regulation in any respect. Max Trac is not responsible for vehicle compatibility with other aftermarket products. Warranty coverage does not include consumer opinions regarding ride comfort, fitment and design after product installation.

Max Trac reserves the right to change, modify or cancel this warranty without prior notice.

## **WARRANTY RETURN**

Contact Maxtrac by sending an email with a copy of the original purchase receipt, along with photographs clearly illustrating the failure mode.

1. Upon validating the information provided, Maxtrac will issue a Return Manufacturer Authorization number (RMA).
2. Return your product to Max Trac Suspension at your expense in order to execute a claim under this warranty.
3. Include the RMA on the outside of the box. Any returns without the RMA will be refused.

## **NON-WARRANTY RETURN & CREDIT POLICY**

Your item must be in its original unused and resalable condition to be returned, unless there is a manufacturing defect. You must return the item within 30 days of your purchase. Otherwise, there will be an additional restocking fee.

1. Please contact Max Trac Suspension at (844) 535-1668 to obtain a Return Manufacturer Authorization Number (RMA).
2. Return your product to Max Trac Suspension at your expense.
3. Include the RMA on the outside of the box. Any returns without the RMA will be refused.

## **Return Exceptions**

Merchandise that has been installed, used, or altered may be subject to no credit.

## **Restocking Fee**

All items are subject to a restocking fee based on the condition of the packaging and product.

Max Trac Suspension does not credit shipping and handling. Credit minus applicable restocking fee will be determined and issued within 10 business days of product receipt.

All returns will be credited to your Maxtrac account.



# INSTALLATION WARNINGS

**READ INSTRUCTIONS AND WARNINGS COMPLETELY PRIOR TO INSTALLATION.**

**MA TRAC IS NOT RESPONSIBLE FOR ANY DAMAGE OR INJURY DUE TO IMPROPER INSTALLATION OR MAINTENANCE.**

Installer is responsible to insure a safe and controllable vehicle after performing modifications. All steps and procedures described in these instructions were performed while the vehicle was properly supported on a two post vehicle lift with safety jacks. Included instructions are recommended guidelines only.

Max Trac Suspension recommends reference to the OE Service Manual corresponding to the model and year of vehicle when either disassembling or assembling factory and related components.

Use caution during all disassembly and assembly steps to insure suspension components are not over extended, causing damage to any vehicle components and parts included in this kit. Unless otherwise specified, tighten all bolts and fasteners to standard torque specifications listed within the OE Service Manual.

Suspension components that use rubber or urethane bushings should be tightened with the vehicle at normal ride height. This will prevent premature wear or failure of the bushing and maintain ride comfort.

Larger tire and wheel combinations may increase leverage on suspension, steering, and related components.

Due to payload options and initial ride height variances, the amount of lift is a base figure. Final ride height dimensions may vary in accordance to original vehicle ride height. Always measure the vehicle ride height prior to beginning of installation.

**MA TRAC SUSPENSION DOES NOT ADVISE USING WHEELS WIDER THAN 9" OR WHEELS WITH LESS THAN 4.5" BACKSPACING. DOING SO WILL RESULT IN VOIDING ANY AND ALL MANUFACTURER WARRANTIES**

Max Trac Suspension does not recommend the combined use of suspension lifts, body lifts, or other lifting devices.

## **Final Checks & Adjustments**

Once the vehicle is lowered to the ground, check all parts which have rubber or urethane components to ensure proper torque. Torque lug nuts to the wheel manufacturer specs.

Move vehicle backwards and forwards a short distance to allow suspension components to settle. Turn the front wheels completely left then right and verify adequate tire, wheel, brake line, and ABS wire clearance.

Test and inspect steering, brake and suspension components for tightness and proper operation. Inspect brakes, hoses, and ABS lines for adequate slack at full extension, and adjust as necessary.



# ADDITIONAL WARNINGS

## **WARNING**

Max Trac Suspension products should ONLY be installed by a certified professional mechanic with experience working on and installing suspension products. Professional knowledge and skill will typically yield the best installation results.

If you need a list of installers in your area, please contact Max Trac Suspension customer service to find one of our authorized dealers. Max Trac Suspension does not warrant work performed by any dealer, installer, or mechanic.

- All lifted vehicles may require additional driveline modifications and/or balancing.
- A Factory Service Manual for your specific Year/ Make / Model should be referenced during installation.
- Use of a vehicle hoist will greatly reduce installation time.
- Speedometer / computer calibration is required if changing /- from factory tire diameter.
- Vehicle must be in excellent operating condition. Repair or replace any and all worn or damaged components prior to installation.

**FAILURE TO PERFORM POST INSTALLATION INSPECTION AND OR CHECKS MAY RESULT IN VEHICLE COMPONENT DAMAGE AND OR PERSONAL INJURY OR DEATH.**

**RECHECK ALL HARDWARE FOR PROPER TORQUE VALUES AFTER 500 MILES, AND THEN PERIODICALLY AT EACH SERVICE INTERVAL THERAFTER.**

## **Vehicle Handling Warning**

Increasing the height of your vehicle raises the center of gravity and **WILL** affect stability and control. Use caution on turns and when steering. Vehicles with larger tires and wheels will handle differently than stock vehicles. Take time to familiarize yourself with the handling of your vehicle after product installation.

## **Wheel Alignment Headlamp Adjustment**

It is necessary after installation to have a wheel alignment performed by a certified alignment technician. Align the vehicle to factory specifications. It is recommended that your vehicle alignment be checked after any off-road driving. In addition to vehicle alignment, it is necessary to check and adjust vehicle head lamps for proper aim and alignment. If the vehicle is equipped with active or passive safety/collision monitoring and / or avoidance systems including, but not limited to, camera-or radar-based systems, check and adjust your vehicle's systems for proper aim and function.

## **Braking Warning**

Generally, braking performance and capabilities are decreased when significantly larger or heavier tires and wheels are used. Take this into consideration while driving. Also, changing axle gear ratios or using tires that are taller or shorter than factory height will cause an erroneous speedometer reading. On vehicles equipped with an electronic speedometer, the speed signal impacts other important functions as well. Speedometer recalibration for both mechanical and electronic types is highly recommended.



# SAFETY WARNINGS

## SAFETY WARNING

MISUSE OF THIS PRODUCT COULD LEAD TO INJURY OR DEATH.

- Suspension systems or components that enhance the on and off-road performance of your vehicle may cause it to handle differently than it did from the factory. EXTREME CARE must be used to prevent loss of control or vehicle rollover during operation.
- ALWAYS operate your vehicle at reduced speeds and maintain distance between vehicles and obstacles to ensure your ability to control your vehicle under all driving conditions. Failure to drive safely may result in serious injury or death to the driver and passengers.
- Driver and passengers must ALWAYS wear seat belts, avoid rapid steering angles and rates and other sudden maneuvers.
- You should NEVER operate your vehicle under the influence of alcohol or drugs.
- Please check all factory components for excessive wear and tear. Please replace worn factory parts before installing any suspension kits. Failure to do so will void any Max Trac warranty.
- Please inspect all wheel bearings and hub bearings for excessive wear and replace worn components before installing suspension kits. These hub and wheel bearings may wear out sooner with installation of larger tires and wheels. MaxTrac does not warranty these factory parts at any time, also using any wheel that MaxTrac does not recommend will void any warranty of MaxTrac components.
- Constant maintenance is required to keep your vehicle safe. Thoroughly inspect your vehicle before and after every off-road use.
- It is the responsibility of the retailer and/or the installer to review all state and local laws with the end user of this product related to bumper height laws and the lifting of a vehicle before the purchase and installation of any Max Trac products.
- It is the responsibility of the driver to check the area around the vehicle for obstructions, people, and animals before moving the vehicle.
- All lifted vehicles have increased blind spots. Take note of these prior to operating the vehicle.

**DAMAGE, INJURY AND OR DEATH CAN OCCUR IF ANY OF THE ABOVE WARNINGS ARE NOT FOLLOWED.**



MAXTRAC SUSPENSION  
4522 E. EISENHOWER CIR. ANAHEIM, CA 92807  
714-630-0363  
[WWW.MAXTRACSUSPENSION.COM](http://WWW.MAXTRACSUSPENSION.COM)  
[TECHSUPPORT@MAXTRACSUSPENSION.COM](mailto:TECHSUPPORT@MAXTRACSUSPENSION.COM)

**PRODUCT:**

**902445**

**2009-2018 DODGE RAM 1500 2WD**

**4.5" REAR BOX KIT**

**REAR COILS / COIL SPACERS/ TRAC BAR**

**BRACKET / SWAY BAR EXTENSION BRACKETS**

**PARTS LIST**

3" LIFT COILS	2
1.5" COIL SPACERS	2
REAR SWAY BAR BRACKETS	2
3/8-16X 1 1/4" HEX CAP SCREW	2
3/8-16 NYLOCK NUT	2
3/8" FLAT WASHER	4
8-1.25X 30 HEX CAP SCREW	2
8-1.25 SERRATED FLANGE NUT	2
8MM FLAT WASHER	2
7324RTB FABRICATED BRACKET	1
1/2-13X 3" HEX CAP SCREW	1
1/2-13 NYLOCK NUT	1
1/2" FLAT WASHER	2
7324RTB -1 ZINC PLATED SLEEVE	1
7/16-14X 1 1/4" HEX CAP SCREW	2
7/16-14 NYLOCK NUT	2
7/16" FLAT WASHER	4

PLEASE DOUBLE CHECK THE PARTS LIST BEFORE BEGINNING INSTALLATION, TO ENSURE ALL PARTS ARE PRESENT, IF THERE IS SOMETHING MISSING, PLEASE CONTACT MAXTRAC IMMEDIATELY 714-630-0363 AND SEND PICTURES TO [TECHSUPPORT@MAXTRACSUSPENSION.COM](mailto:TECHSUPPORT@MAXTRACSUSPENSION.COM)

READ THE INSTRUCTIONS THOROUGHLY AND COMPLETELY BEFORE BEGINNING THE INSTALLATION.

**PRIOR TO INSTALLATION:**

1. Factory service manual is recommended to have on hand.
2. Secure and properly block vehicle prior to beginning installation
3. Always wear safety glasses when using power tools or working under the vehicle
4. Modifications to any part will void the warranty associated with that product.
5. Jack up front of vehicle, place jack stands under frame, behind front suspension.

After removing parts from vehicle, save hardware for reinstallation

**IT IS RECOMMENDED THAT YOU HAVE YOUR VEHICLE'S ALIGNMENT CHECKED WHENEVER INSTALLING NEW SUSPENSION. IT IS ALSO RECOMMENDED THAT YOU ADJUST YOUR HEADLIGHTS WHENEVER YOUR VEHICLE'S RIDE HEIGHT IS ALTERED.**

1. Jack up the rear of the truck and support under the frame rails with jack stands
2. Support the rear axle with an adjustable jack, then unbolt and remove both shocks.
3. Unbolt both sway bar end links from the frame.
4. Unbolt both brake lines from the frame.



5. Unclip both ABS wire guides from the frame.
6. Unbolt the track bar from the frame and separate.
7. Locate the rear track bar bracket at the frame. On the side facing the rear of the truck, measure up 4" and out 1 1/8" from the track bar center hole. Center punch a mark here.



8. Drill a hole through your mark using a 7/16" drill bit. (The truck's exhaust may need to either be moved or removed to gain access with a drill)
9. Bolt up the new track bar bracket. One ear inside, one ear outside the factory mount. Using the new Bracket as a guide, drill a 1/2" hole on the front of the original mount.
10. Using the 3 provided bolts and 1 crush sleeve, tighten the new mount. Once tight, re-install the track bar using the original bolt but do not tighten until the truck is on the ground.



11. Install the new sway bar drop brackets using 1 provided bolt at the original sway bar mounting hole and the original brake line bolt at the threaded hole. Then install the brake line bracket at the proper side of the double hole using provided hardware.
12. Attach the sway bar end link to the new bracket using the original hardware.
13. Install both lift coils and coil spacers.
14. Install both rear shocks, body down and shaft up.



15. Lower the truck to the ground, bounce the rear bumper a few times, then tighten the bolts on the track bar.



**MaxTrac**  
s u s p e n s i o n

## RIDE HEIGHT SHEET

\*THIS SHEET MUST BE FILLED OUT PRIOR TO CALLING WITH ANY DISCREPENCIES

YEAR \_\_\_\_\_ MAKE \_\_\_\_\_ MODEL \_\_\_\_\_

4WD / 2WD / AWD

### MEASUREMENTS

\*MOST ACCURATE MEASUREMENT IS FROM THE BOTTOM OF THE RIM, STRAIGHT UP TO THE BOTTOM OF THE FENDER

\*TRUE HEIGHT WONT BE ACCURATE UNTIL VEHICAL IS ALIGNED

\*THE VEHICLE'S CASTER WILL BE INCREASED OR DECREASED IF ONLY THE FRONT OF THE VEHICLE IS MODIFIED

	BEFORE	AFTER	DIFFERENCE
DRIVER FRONT	_____	_____	_____
DRIVER REAR	_____	_____	_____
PASSENGER FRONT	_____	_____	_____
PASSENGER REAR	_____	_____	_____