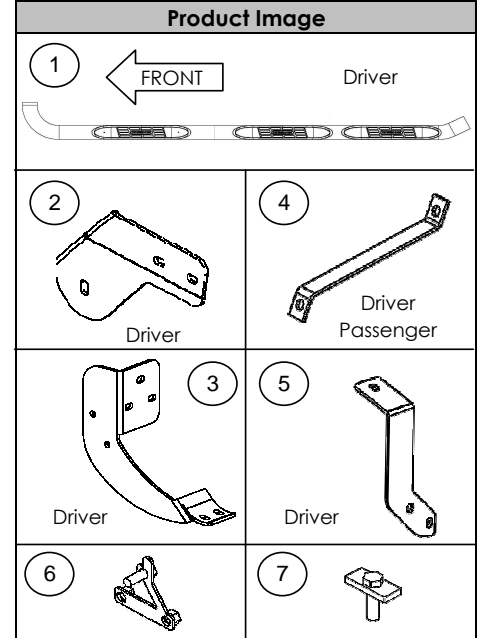


Parts List				
Item	Qty.	Code	Description	Max. Torque
1	1 Set	373198AA-8CA	Side Bar Passenger & Driver	-
1 BRK-37399 HARDWARE BRACKETS KIT INCLUDES:				
2	1 Set	379234AA	Front bracket	-
3	1 Set	376254AA	Rear bracket	-
4	2 Piece	372242AB	Auxiliary front bracket	-
5	1 Set	372244CA	Auxiliary rear bracket	-
6	4 Piece	372240BA	3/8" Bolt plate	30 Lb.Ft
7	2 Piece	370200AA	3/8" T Bolt	30 Lb.Ft
1 KTE-37399 HARDWARE BOLTS KIT INCLUDES:				
8	2 Piece	-	1/2 x 2" Hex head bolt	75 Lb.Ft
9	2 Piece	-	1/2 x 4" Hex head bolt	75 Lb.Ft
10	2 Piece	-	1/2" Hex nut.	75 Lb.Ft
11	6 Piece	-	1/2" Flat washer.	-
12	4 Piece	-	1/2" Lock washer.	-
13	16 Piece	-	3/8 x 1 1/4" Hex head bolt.	30 Lb.Ft
14	8 Piece	-	3/8" Hex nut.	30 Lb.Ft
15	20 Piece	-	3/8" Flat washer.	-
16	20 Piece	-	3/8" Lock washer.	-
17	6 Piece	-	Vinyl Gasket	-
18	8 Piece	-	M8 x 25mm Hex head bolt.	30 Lb.Ft
19	8 Piece	-	5/16" Flat washer.	-
20	8 Piece	-	5/16" Lock washer.	-

Required Tools (Not included)	
Qty.	Description
1	1/2 - 9/16 - 3/4" Socket & Wrench
1	13mm Socket & Wrench
1	Ratchet
1	Ratchet extension



Instructions

Do not attempt to install this product on any vehicle other than the one it is designed for and listed above!

1. Before beginning the installation, please read all directions carefully and verify that all necessary hardware is accounted for. If any parts are missing, stop the installation and contact your distributor immediately.
2. To maintain and care this product, keep it clean and do not use abrasive cleaners or polish waxes. We recommend to use only automotive wax such as pure carnauba to avoid scratches and rust.
3. The approximate installation time is 50 min.
4. This installation uses 2 brackets per side, **(Photo 1)**.

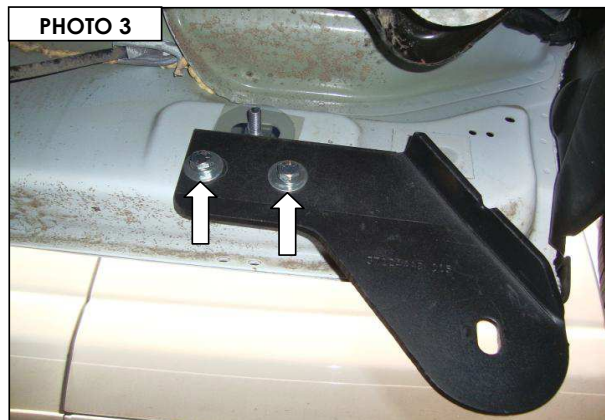
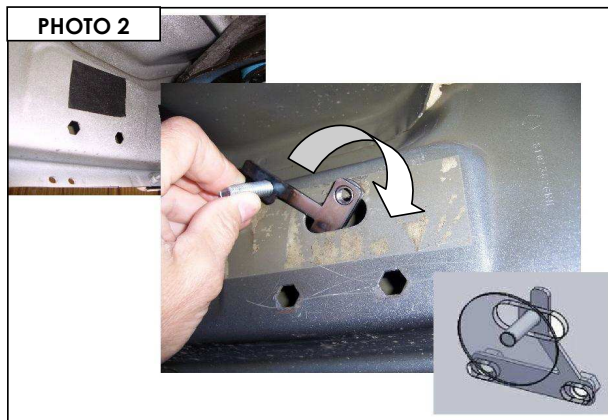
PHOTO 1



Front Bracket.

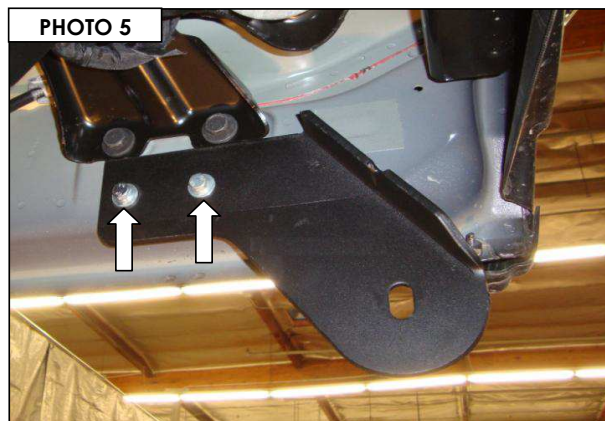
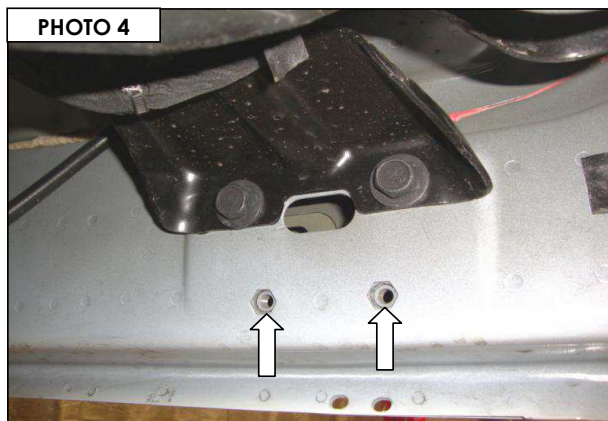
5. Begin the installation on the driver side of the vehicle.

6. If the vehicle has (2) hexagon shaped holes in the rocker panel at the front of the cab, remove the tape covering the obround hole in the rocker panel, and install (1) 3/8" T-Plate in the rocker panel and install (1) vinyl gasket over the threads to prevent the T-Plate from falling into the body, **(Photo 2)**. Align the nuts welded to the T-Plate with the hexagon holes in the rocker panel and attach the driver side front bracket to the rocker panel using the T-Plate, (2) 3/8" X 1 1/4" hex bolts, (2) 3/8" flat washers and (2) 3/8" lock washers, **(Photo 3)**. Leave the bolts loose for final adjustment.



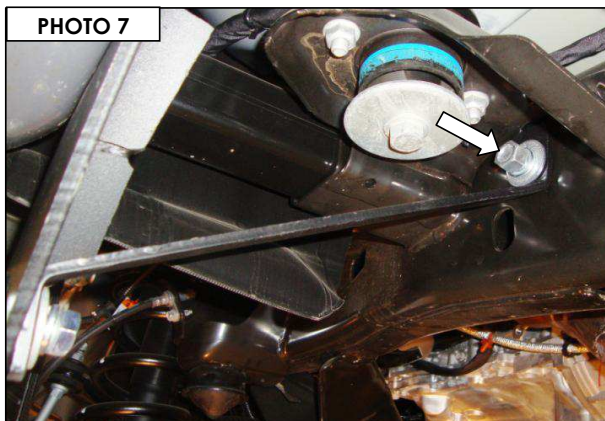
Front Bracket

7. If the vehicle has (2) M8 threaded inserts in the rocker panel at the front of the cab, **(Photo 4)**. Attach the driver side front bracket to the rocker panel using (2) M8 hex bolts, (2) 5/16" lock washers and (2) 5/16" flat washers, **(Photo 5)**. Leave the bolts loose for final adjustment.



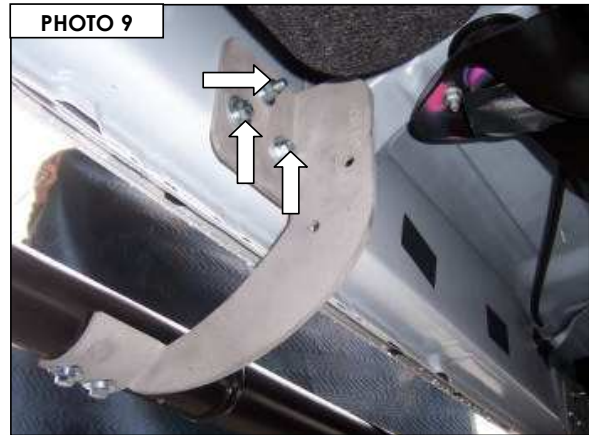
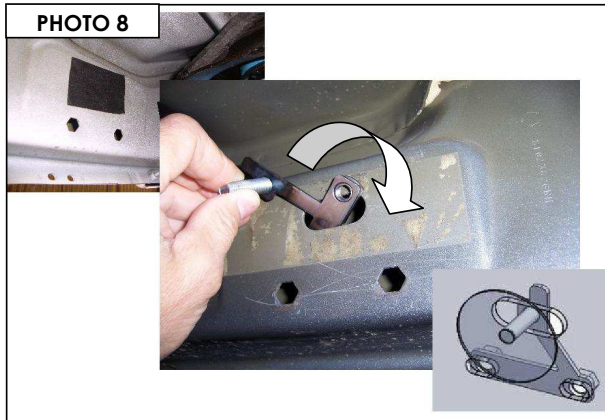
Front Auxiliary Bracket

8. Locate the round holes on each side of the frame rail near the front cab mount, **(Photo 6)**. Insert position (1) 1/2" x 4" hex bolt through the holes in the frame, and attach one of the front auxiliary brackets to the side of the frame using the 1/2" x 4" hex bolt, (2) 1/2" flat washers, (1) 1/2" lock washer and (1) 1/2" hex nut, **(Photo 7)**. Leave the nut and bolt loose for final adjustment.



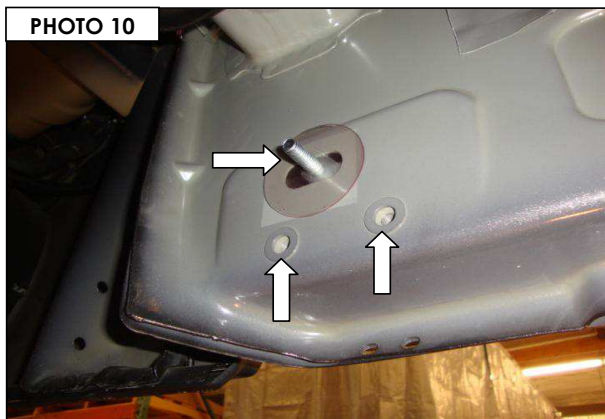
Rear Bracket

9. If the vehicle has hexagon holes in the rocker panel at the rear of the cab, remove the tape covering the obround hole in the rocker panel, and install (1) 3/8" T-Plate in the rocker panel and install (1) vinyl gasket over the threads to prevent the T-Plate from falling into the body, **(Photo 8)**. Align the nuts welded to the T-Plate with the hexagon holes in the rocker panel and attach the driver side rear bracket to the rocker panel using the T-Plate, (2) 3/8" X 1 1/4" hex bolts, (3) 3/8" flat washers, (3) 3/8" lock washers and (1) 3/8" hex nut, **(Photo 9)**. Leave the nut and bolts loose for final adjustment.



Rear Bracket

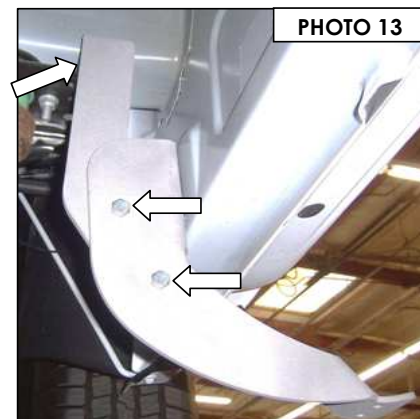
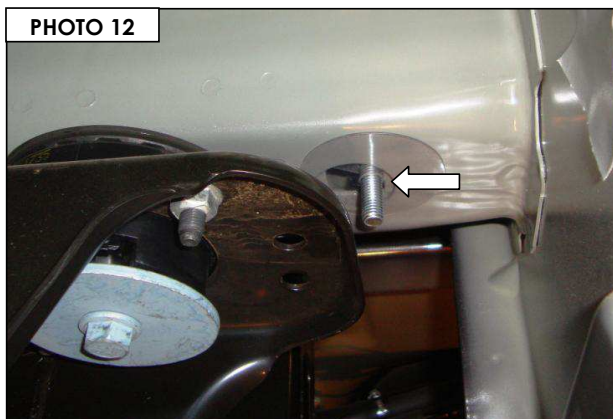
10. If the vehicle has M8 threaded inserts in the rocker panel at the rear of the cab, remove the tape covering the obround hole in the rocker panel, and install (1) 3/8" T-Plate in the oblong hole in the rocker panel and install (1) vinyl gasket over the threads to prevent the T-plate from falling into the body, **(Photo 10)**. Rotate the T-Plate so the nuts welded to the T-Plate clear the M8 threaded inserts in the rocker panel then attach the rear bracket to the rocker panel using the T-Plate (1) 3/8" flat washer, (1) 3/8" lock washer, (1) 3/8" hex nut, and (2) M8 hex bolts, (2) 5/16" lock washers and (2) 5/16" flat washers, **(Photo 11)**. Leave the nut and bolts loose for final adjustment.



Rear Auxiliary Bracket

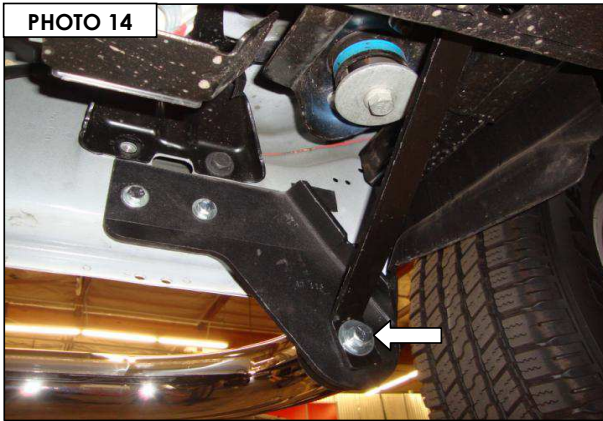
11. Locate the hole in the underside of the body at the rear of the cab and install (1) 3/8" T-Bolt in the hole, and install (1) vinyl gasket over the threads to prevent the T-Bolt from falling into the body, **(Photo 12)**.

12. Attach the driver side auxiliary brackets to the underside of the body using the T-Bolt, (1) 3/8" flat washer, (1) 3/8" lock washer, and (1) 3/8" hex nut. Attach the opposite end of the auxiliary bracket to the side of the rear bracket using (1) 3/8" x 1 1/4" hex bolt, (1) 3/8" flat washer, (1) 3/8" lock washer and (1) 3/8" hex nut, by each hole. **(Photo 13)**. Leave the nuts and bolt loose for final adjustment.



Side Step Driver side

13. Attach the driver side step and front auxiliary bracket to the front bracket using (1) 1/2" x 2" hex bolt (1) 1/2" flat washer and (1) 1/2" lock washer (**Photo 14**), and to the rear bracket using (1) 3/8" x 1 1/4" hex bolt, (1) 3/8" flat washer, (1) 3/8" lock washer and (1) 3/8" hex nut, by each hole. (**Photo 15**). Leave the nuts and bolt loose for final adjustment.

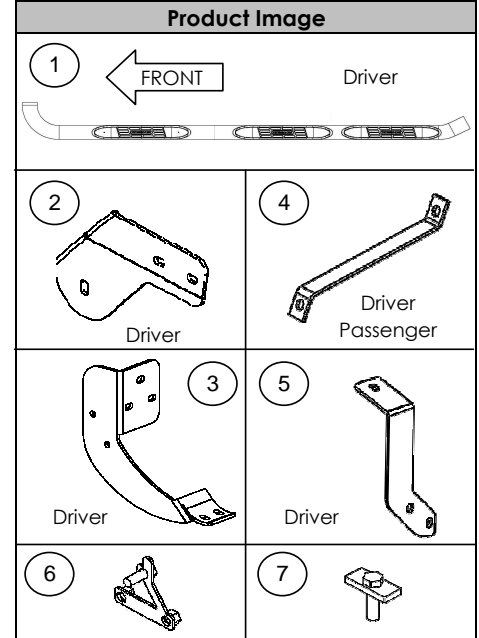


14. Make any final adjustments to the alignment of the sidebar and tighten all bolts, starting with the brackets.
15. Repeat the above installation steps to install the brackets and side step on the passenger side of the vehicle.
16. Remember to check and repair the hardware periodically.



Parts List				
Item	Qty.	Code	Description	Max. Torque
1	1 Set	373198AA-8CA	Side Bar Passenger & Driver	-
1 BRK-37399 HARDWARE BRACKETS KIT INCLUDES:				
2	1 Set	379234AA	Front bracket	-
3	1 Set	376254AA	Rear bracket	-
4	2 Piece	372242AB	Auxiliary front bracket	-
5	1 Set	372244CA	Auxiliary rear bracket	-
6	4 Piece	372240BA	3/8" Bolt plate	30 Lb.Ft
7	2 Piece	370200AA	3/8" T Bolt	30 Lb.Ft
1 KTE-37399 HARDWARE BOLTS KIT INCLUDES:				
8	2 Piece	-	1/2 x 2" Hex head bolt	75 Lb.Ft
9	2 Piece	-	1/2 x 4" Hex head bolt	75 Lb.Ft
10	2 Piece	-	1/2" Hex nut.	75 Lb.Ft
11	6 Piece	-	1/2" Flat washer.	-
12	4 Piece	-	1/2" Lock washer.	-
13	16 Piece	-	3/8 x 1 1/4" Hex head bolt.	30 Lb.Ft
14	8 Piece	-	3/8" Hex nut.	30 Lb.Ft
15	20 Piece	-	3/8" Flat washer.	-
16	20 Piece	-	3/8" Lock washer.	-
17	6 Piece	-	Vinyl Gasket	-
18	8 Piece	-	M8 x 25mm Hex head bolt.	30 Lb.Ft
19	8 Piece	-	5/16" Flat washer.	-
20	8 Piece	-	5/16" Lock washer.	-

Required Tools (Not included)	
Qty.	Description
1	1/2 - 9/16 - 3/4" Socket & Wrench
1	13mm Socket & Wrench
1	Ratchet
1	Ratchet extension



Instructions

Do not attempt to install this product on any vehicle other than the one it is designed for and listed above!

1. Before beginning the installation, please read all directions carefully and verify that all necessary hardware is accounted for. If any parts are missing, stop the installation and contact your distributor immediately.
2. To maintain and care this product, keep it clean and do not use abrasive cleaners or polish waxes. We recommend to use only automotive wax such as pure carnauba to avoid scratches and rust.
3. The approximate installation time is 50 min.
4. This installation uses 2 brackets per side, **(Photo 1)**.

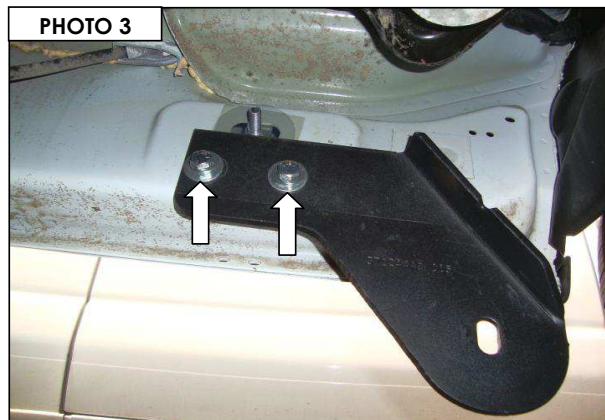
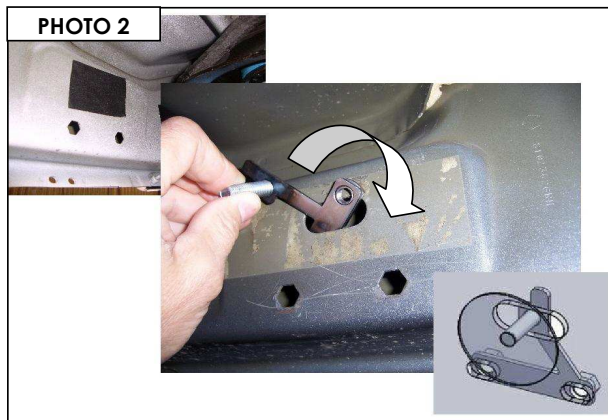
PHOTO 1



Front Bracket.

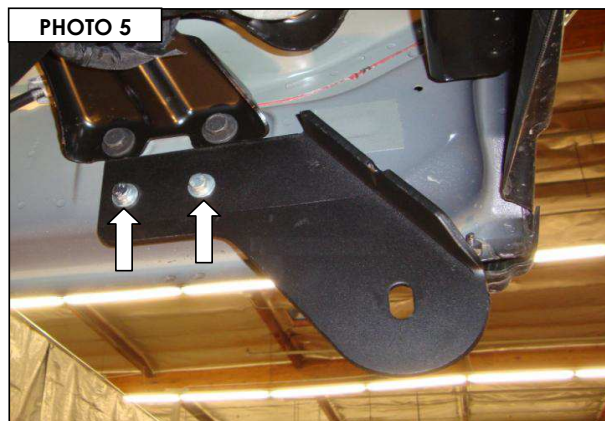
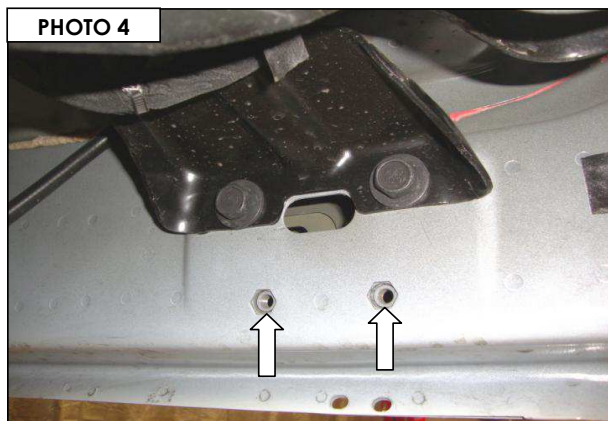
5. Begin the installation on the driver side of the vehicle.

6. If the vehicle has (2) hexagon shaped holes in the rocker panel at the front of the cab, remove the tape covering the obround hole in the rocker panel, and install (1) 3/8" T-Plate in the rocker panel and install (1) vinyl gasket over the threads to prevent the T-Plate from falling into the body, **(Photo 2)**. Align the nuts welded to the T-Plate with the hexagon holes in the rocker panel and attach the driver side front bracket to the rocker panel using the T-Plate, (2) 3/8" X 1 1/4" hex bolts, (2) 3/8" flat washers and (2) 3/8" lock washers, **(Photo 3)**. Leave the bolts loose for final adjustment.



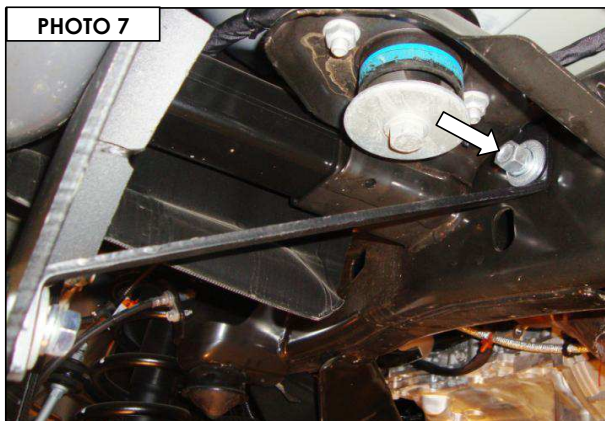
Front Bracket

7. If the vehicle has (2) M8 threaded inserts in the rocker panel at the front of the cab, **(Photo 4)**. Attach the driver side front bracket to the rocker panel using (2) M8 hex bolts, (2) 5/16" lock washers and (2) 5/16" flat washers, **(Photo 5)**. Leave the bolts loose for final adjustment.



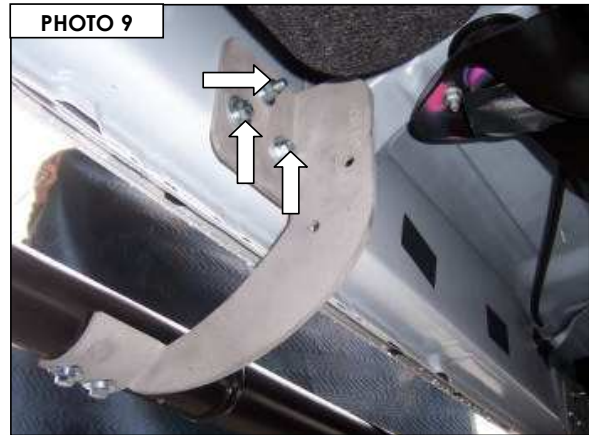
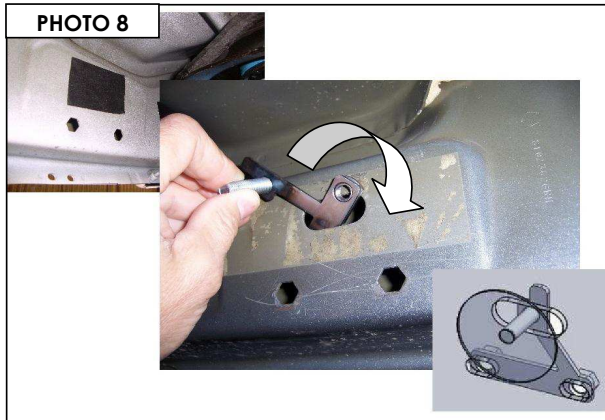
Front Auxiliary Bracket

8. Locate the round holes on each side of the frame rail near the front cab mount, **(Photo 6)**. Insert position (1) 1/2" x 4" hex bolt through the holes in the frame, and attach one of the front auxiliary brackets to the side of the frame using the 1/2" x 4" hex bolt, (2) 1/2" flat washers, (1) 1/2" lock washer and (1) 1/2" hex nut, **(Photo 7)**. Leave the nut and bolt loose for final adjustment.



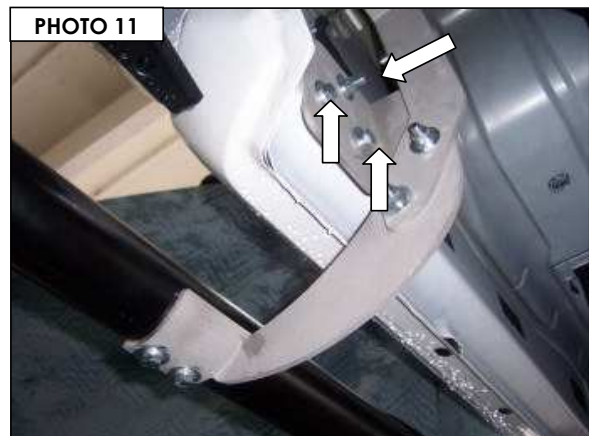
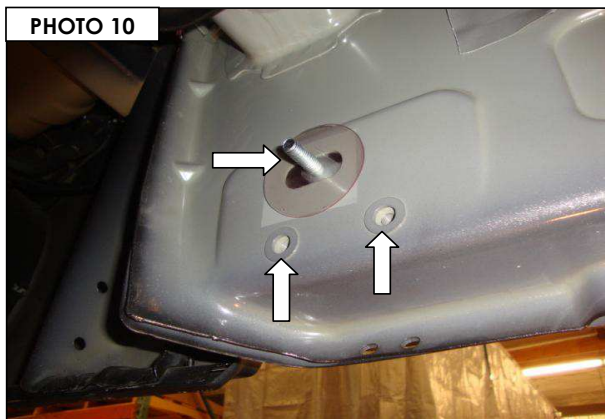
Rear Bracket

9. If the vehicle has hexagon holes in the rocker panel at the rear of the cab, remove the tape covering the obround hole in the rocker panel, and install (1) 3/8" T-Plate in the rocker panel and install (1) vinyl gasket over the threads to prevent the T-Plate from falling into the body, **(Photo 8)**. Align the nuts welded to the T-Plate with the hexagon holes in the rocker panel and attach the driver side rear bracket to the rocker panel using the T-Plate, (2) 3/8" X 1 1/4" hex bolts, (3) 3/8" flat washers, (3) 3/8" lock washers and (1) 3/8" hex nut, **(Photo 9)**. Leave the nut and bolts loose for final adjustment.



Rear Bracket

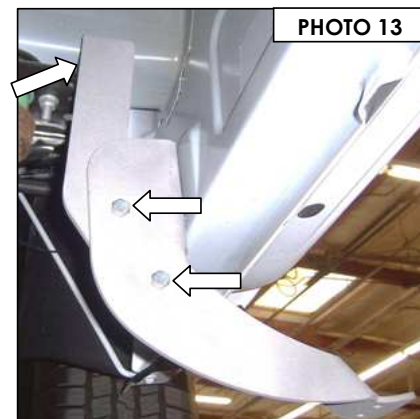
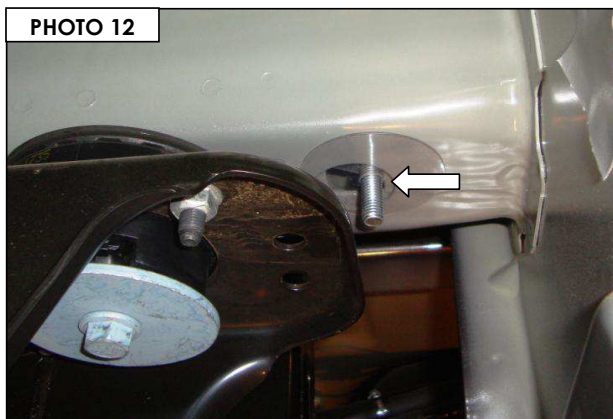
10. If the vehicle has M8 threaded inserts in the rocker panel at the rear of the cab, remove the tape covering the obround hole in the rocker panel, and install (1) 3/8" T-Plate in the oblong hole in the rocker panel and install (1) vinyl gasket over the threads to prevent the T-plate from falling into the body, **(Photo 10)**. Rotate the T-Plate so the nuts welded to the T-Plate clear the M8 threaded inserts in the rocker panel then attach the rear bracket to the rocker panel using the T-Plate (1) 3/8" flat washer, (1) 3/8" lock washer, (1) 3/8" hex nut, and (2) M8 hex bolts, (2) 5/16" lock washers and (2) 5/16" flat washers, **(Photo 11)**. Leave the nut and bolts loose for final adjustment.



Rear Auxiliary Bracket

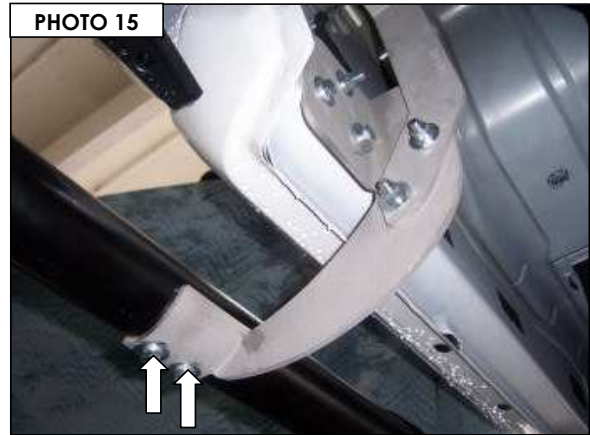
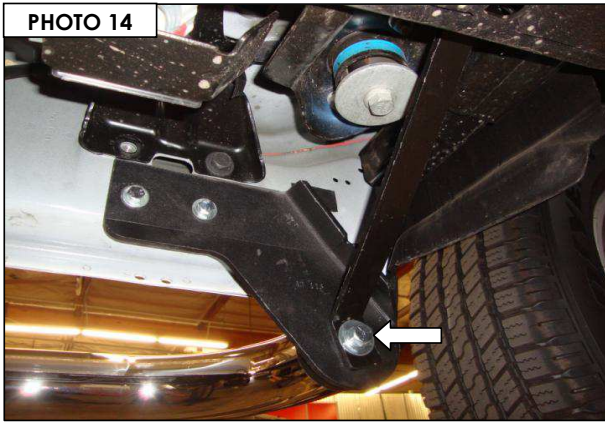
11. Locate the hole in the underside of the body at the rear of the cab and install (1) 3/8" T-Bolt in the hole, and install (1) vinyl gasket over the threads to prevent the T-Bolt from falling into the body, **(Photo 12)**.

12. Attach the driver side auxiliary brackets to the underside of the body using the T-Bolt, (1) 3/8" flat washer, (1) 3/8" lock washer, and (1) 3/8" hex nut. Attach the opposite end of the auxiliary bracket to the side of the rear bracket using (1) 3/8" x 1 1/4" hex bolt, (1) 3/8" flat washer, (1) 3/8" lock washer and (1) 3/8" hex nut, by each hole. **(Photo 13)**. Leave the nuts and bolt loose for final adjustment.



Side Step Driver side

13. Attach the driver side step and front auxiliary bracket to the front bracket using (1) 1/2" x 2" hex bolt (1) 1/2" flat washer and (1) 1/2" lock washer (**Photo 14**), and to the rear bracket using (1) 3/8" x 1 1/4" hex bolt, (1) 3/8" flat washer, (1) 3/8" lock washer and (1) 3/8" hex nut, by each hole. (**Photo 15**). Leave the nuts and bolt loose for final adjustment.



14. Make any final adjustments to the alignment of the sidebar and tighten all bolts, starting with the brackets.
15. Repeat the above installation steps to install the brackets and side step on the passenger side of the vehicle.
16. Remember to check and repair the hardware periodically.

