



---

# FULL REPLACEMENT GRILLES

(2006-2008 RAM)

---

## INSTALLATION INSTRUCTIONS

### CONTENTS

---

(1) Grille

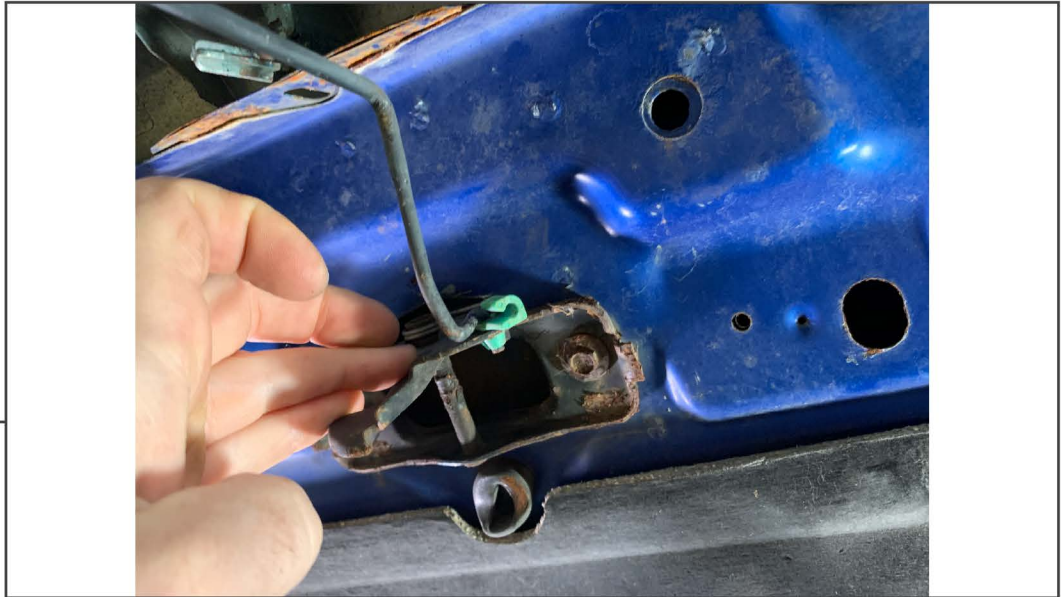
### TOOLS REQUIRED

---

8,10mm Socket  
Socket Wrench

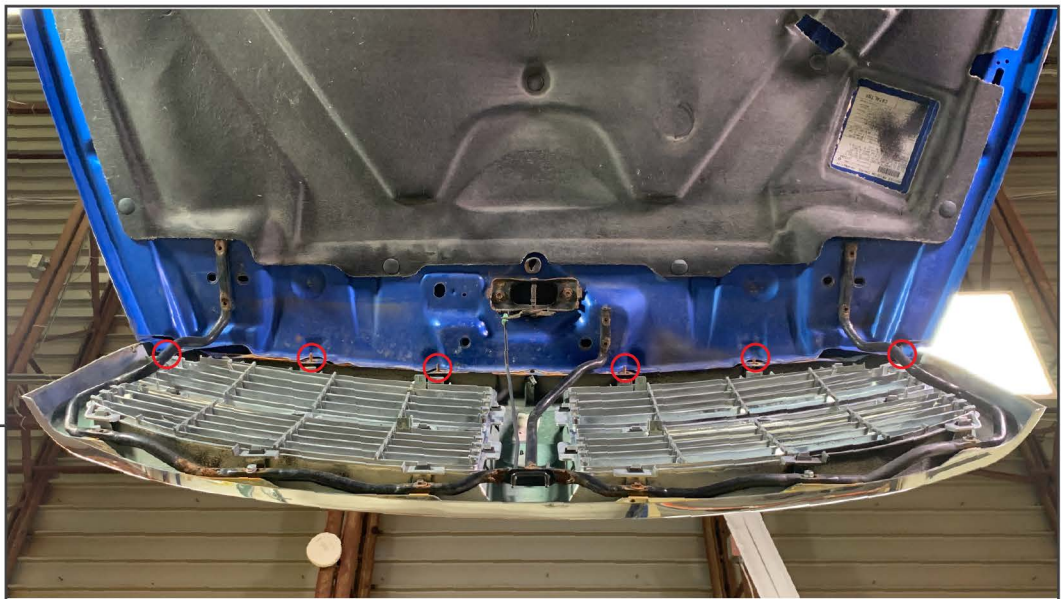
SKU # R111447/R111448/R111449

**STEP 1**



Begin by opening the hood to gain access to the backside of the factory grille. Unclip the hood latch release from the hood latch. Remove the hood latch release rod from the grille.

**STEP 2**



Using an 8mm socket, remove the (6) nuts across the top of the grille.

**STEP 3**



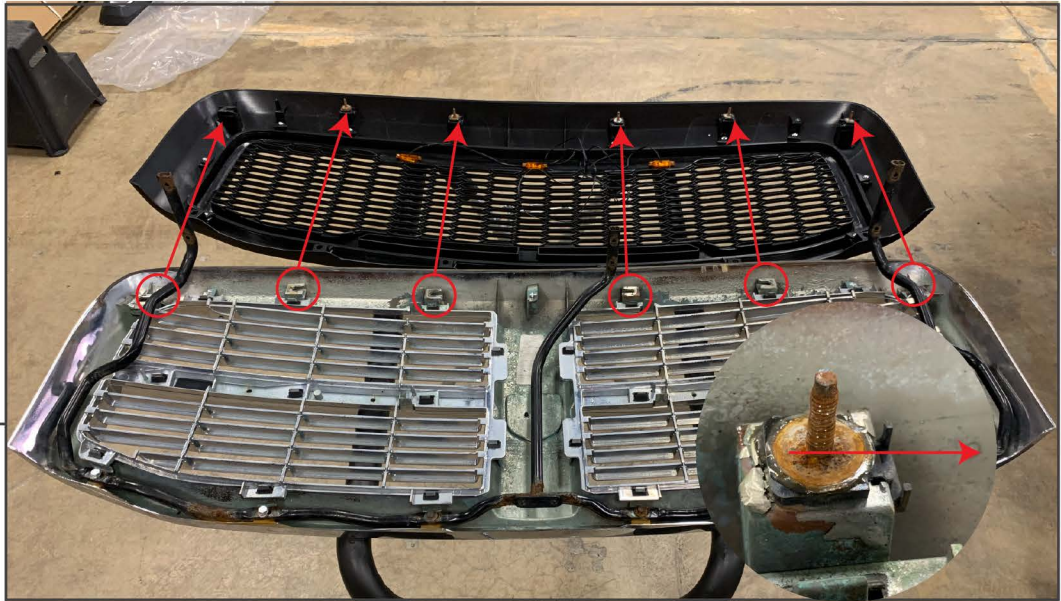
Using the same 8mm socket, remove the (6) bolts securing the grille brace to the underside of the hood.

**STEP 4**



Carefully remove the grille from the vehicle and set it face down on a soft surface.

**STEP 5**



Transfer the (6) clip stud fasteners across the top of the grille onto the new grille.

**STEP 6**



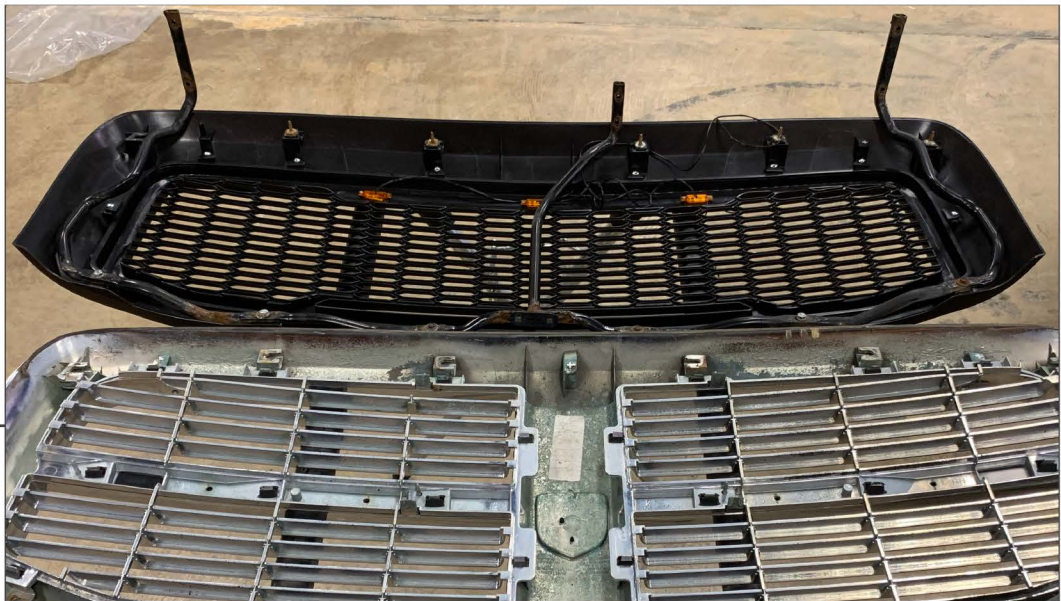
Using an 8mm socket, remove the (6) bolts securing the grille brace to the grille.

**STEP 7**



Transfer the (6) clip nuts from the factory grille onto the new grille.

**STEP 8**



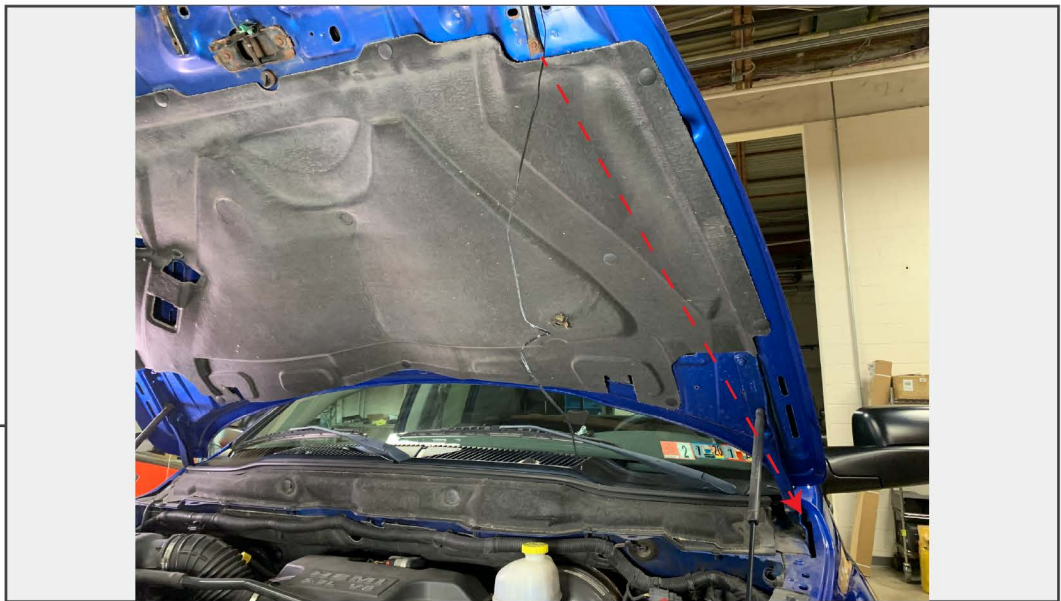
Bolt the grille brace to the new grille using the factory hardware.



---

**STEP 9**

Reinstall the new grille to the vehicle following Steps 1-4 in reverse order.



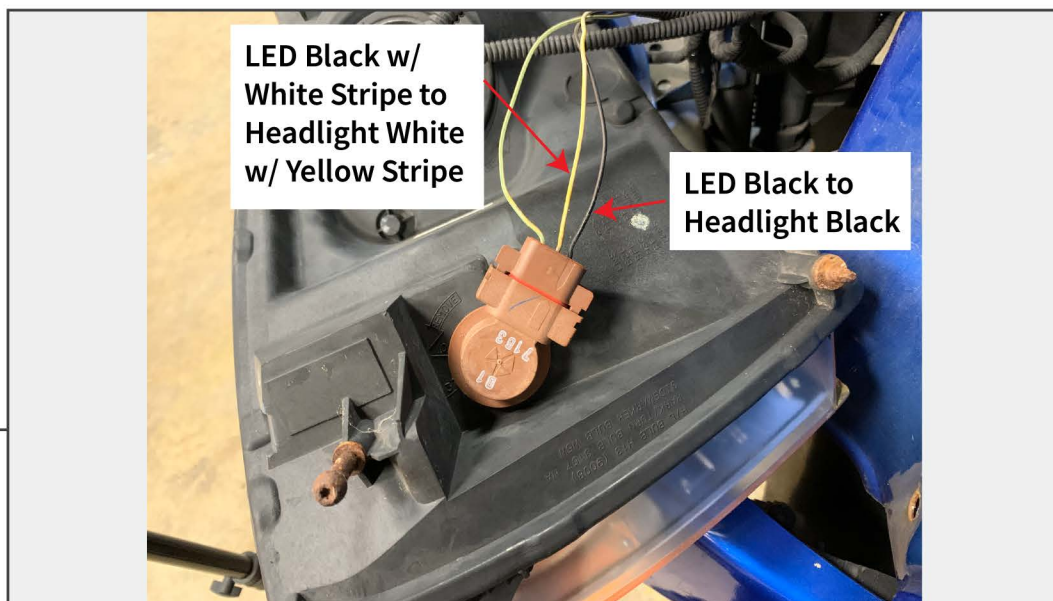
---

**STEP 10**

If equipped with optional grille lights, follow steps 10-12. Route the grille light wiring behind the insulation down to the hood hinge. Ensure the wiring doesn't get pinched by the hinge. Continue routing the wiring up the fender to the headlight.

**STEP 11**

Remove the (3) 8mm screws securing the fender liner to the vehicle. Fold back the fender liner to access the nut securing the headlight to the vehicle. Then remove the (2) 10mm bolts from the front of the headlight. Pull the headlight away from the vehicle.

**STEP 12****Wiring Instruction:**

Wire the LED lights to the factory marker light as follows:

<b>Grille LED Lights</b>	-	<b>Headlight Marker Light</b>
Black	-	Black (Ground)
Black w/ White Stripe	-	White w/ Yellow Stripe (12v+)