



FULL REPLACEMENT GRILLES

(2013-2018 1500)

INSTALLATION INSTRUCTIONS

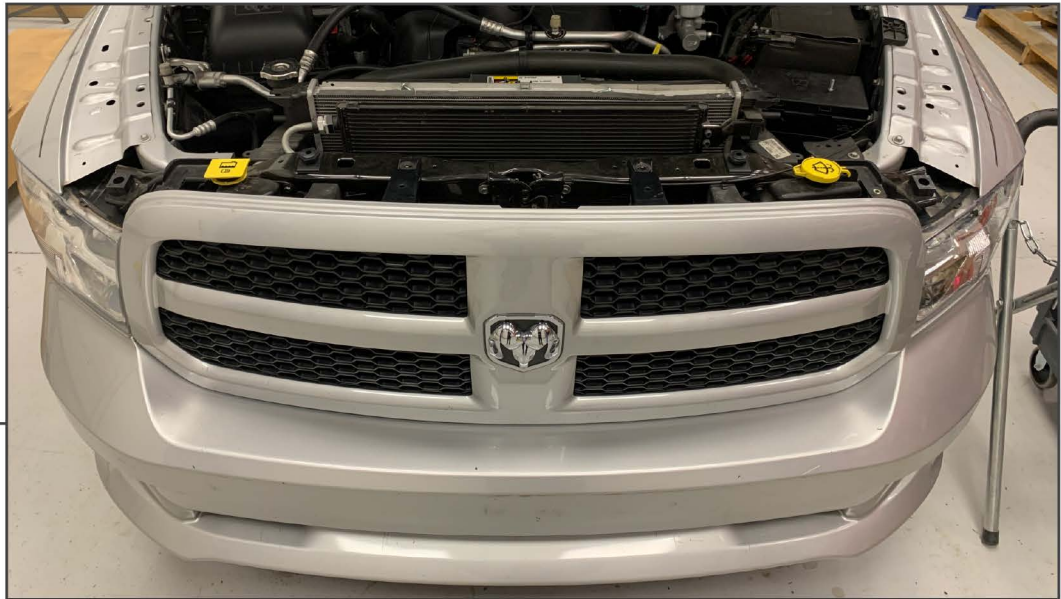
CONTENTS

- (1) Grille
- (1) Optional Wiring Harness

TOOLS REQUIRED

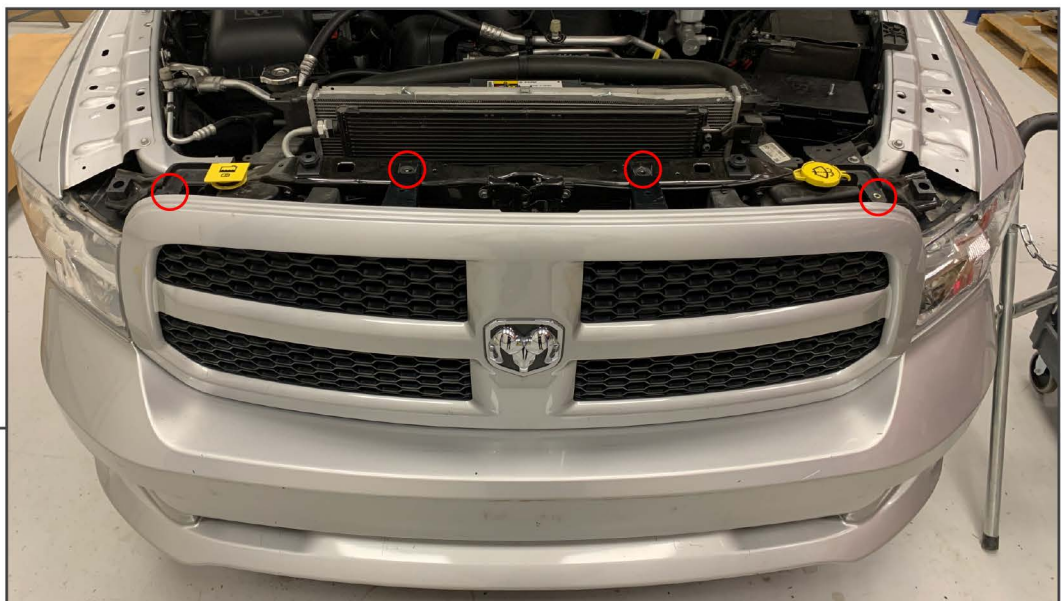
- Soft Pry Tool
- 10mm Socket
- Socket Wrench

SKU #R119953



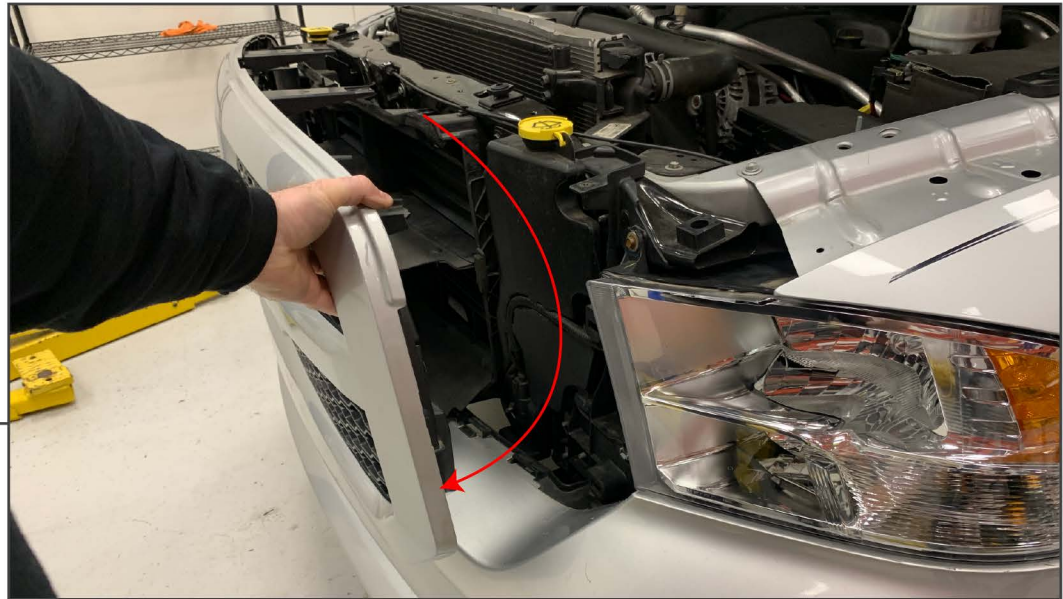
STEP 1

Remove the air dam across the top of the radiator support. Using a soft pry tool, remove the plastic push clips securing the air dam to the vehicle.



STEP 2

Using a 10mm socket, remove the (4) bolts securing top of the grille to the radiator support.



STEP 3

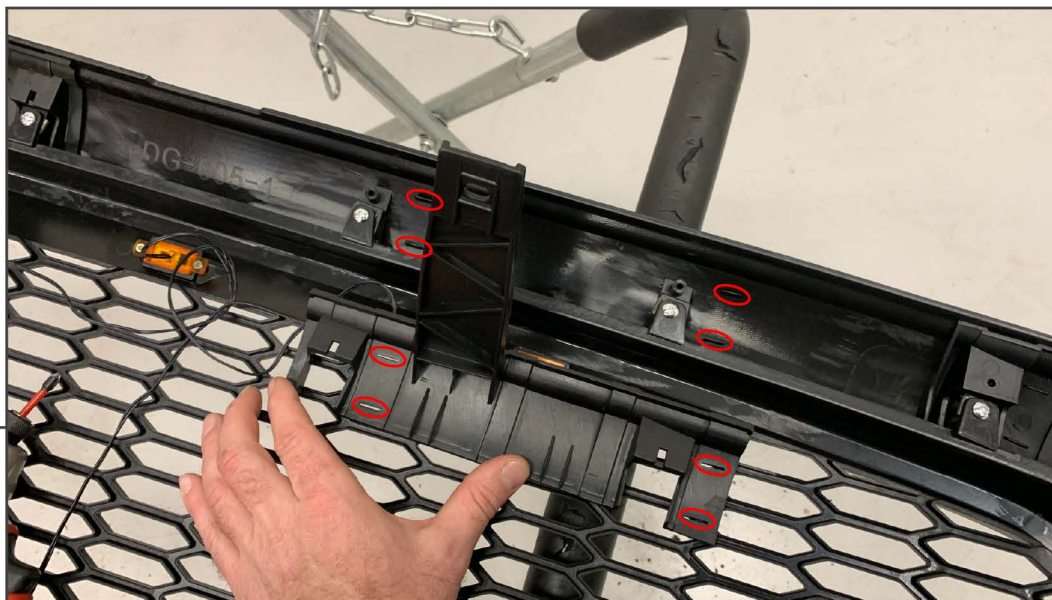
Place your hand down behind the grille and press at the bottom of the grille away from the radiator support and pull the grille away from the vehicle.



STEP 4

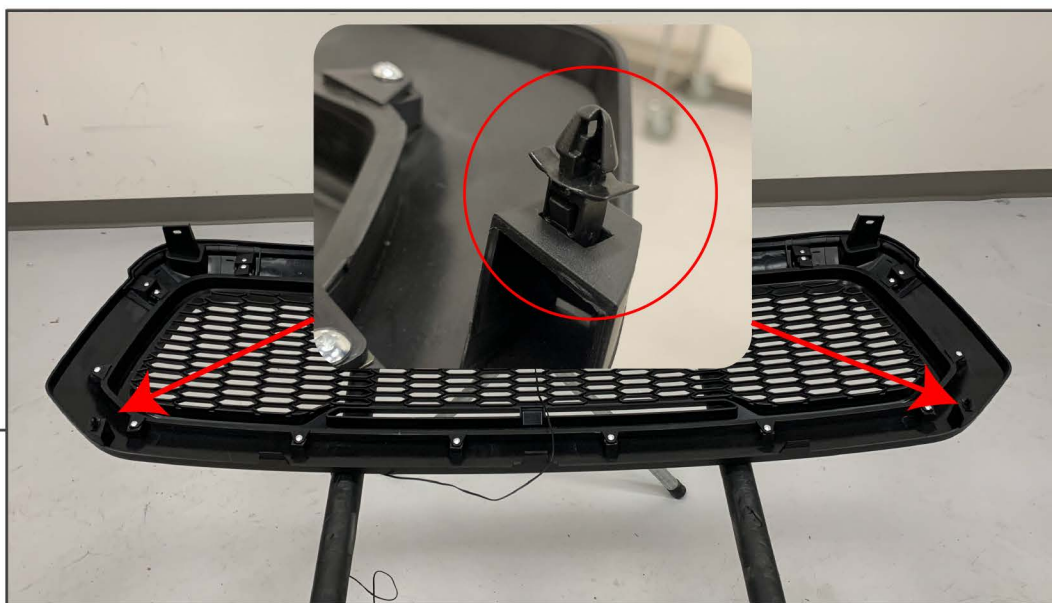
Align the supplied corner brackets to the back of the grille. Each bracket has a specific location on the grille. Line the alignment tabs up with each bracket. Then attach the brackets to the grille using the supplied screws.

STEP 5



Align the supplied center brackets to the back of the grille. Each bracket has a specific location on the grille. Line the alignment tabs up with each bracket. Then attach the brackets to the grille using the supplied screws.

STEP 6



Press the supplied push clips into the (2) lower grille clip locations.

STEP 7



Reinstall the grille following Step 1-3 in reverse order.

STEP 8



If equipped with grille lights, wire the grille lights as follows:

- | | | |
|--------------------------|---|-------------------------------|
| Grille LED Lights | - | Headlight Marker Light |
| Black | - | Black (1) |
| Black w/ White Stripe | - | White/Black (2) |



STEP 9

Installation is now complete.