

LED PROJECTOR HEADLIGHTS

(2019-2021 RAM 1500)

INSTALLATION INSTRUCTIONS

CONTENTS

- (1) LH Headlight Assembly
- (1) RH Headlight Assembly
- (1) DRL Harness
- (2) Adapter Harness

TOOLS REQUIRED

- 8mm, 10mm Sockets
- T-25 Torx Socket
- Ratchet
- Plastic Panel Removal Tool

STEP 1



Open the hood. Remove (12) plastic push clips from the radiator support cover. Remove cover from vehicle.

STEP 2



Remove (12) 10mm bolts, and (2) plastic push clips from the upper chrome panel. Remove the upper chrome panel from the vehicle.

Note: Organize all hardware by length. Multiple length bolts are used for specific locations. All hardware will be reused in the original locations.

STEP 3



Remove (2) 8mm screws from the inner fender above the front bumper. Peel the plastic panel outward from the fender, then gently pry the front of the panel away from the vehicle.

Repeat this procedure to the opposite side.

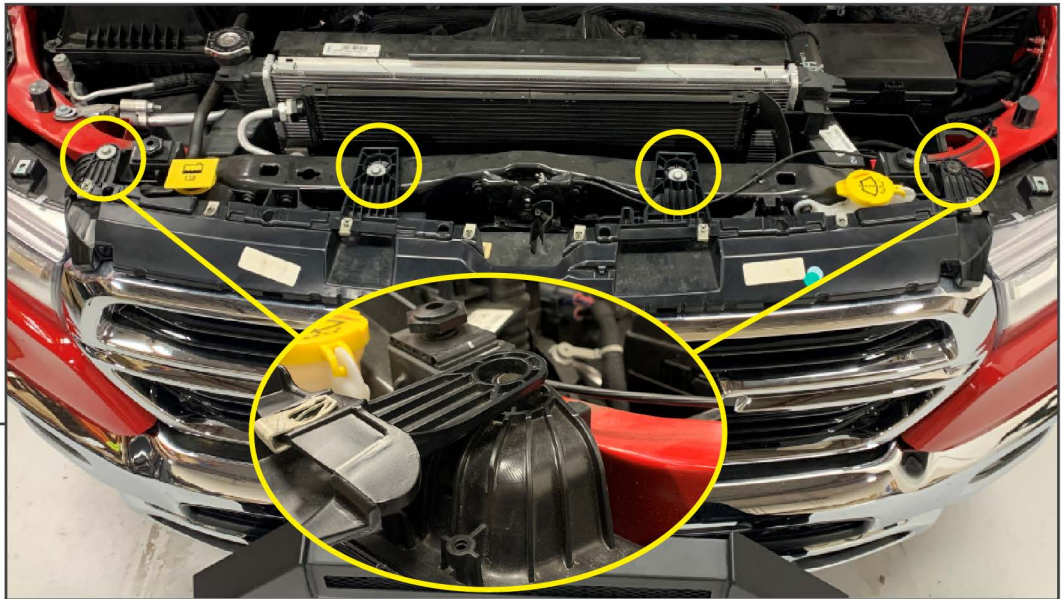
STEP 4



Remove (4) 10mm bolts from below the headlight assembly.

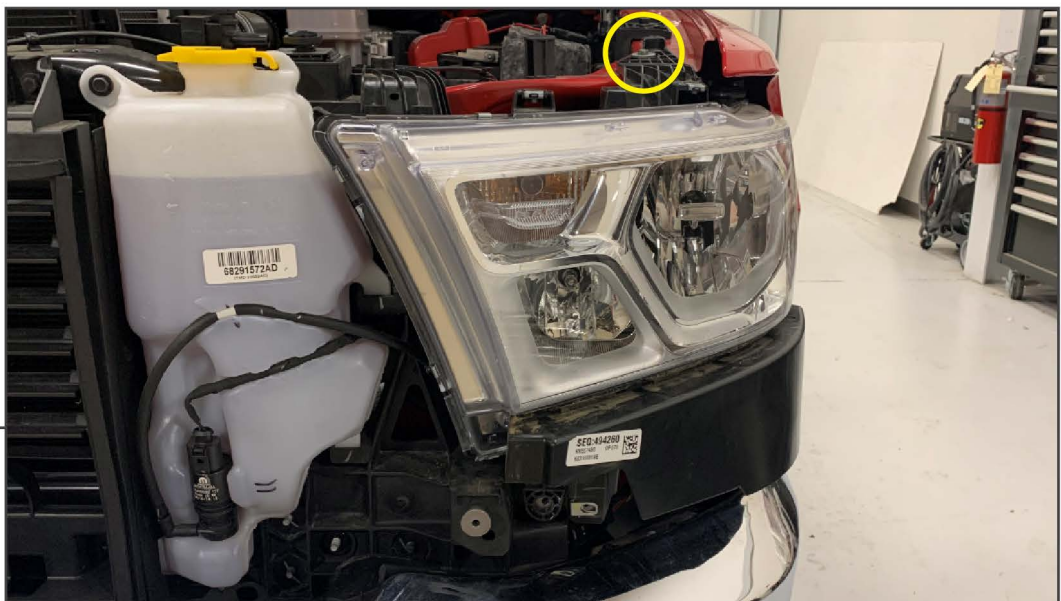
Repeat this procedure to the opposite side.

STEP 5



Remove (4) 10mm bolts from the top of the grille . Slightly lift the grille tabs over the bolt holes, then remove the grille from the vehicle.

STEP 6



Remove (1) plastic push clips and (1) 10mm bolt at the top of the headlight housing. Remove the headlight from the vehicle. Unplug the (2) electrical connectors from the backside of the housing. Place headlight assembly on a soft surface for disassembly.

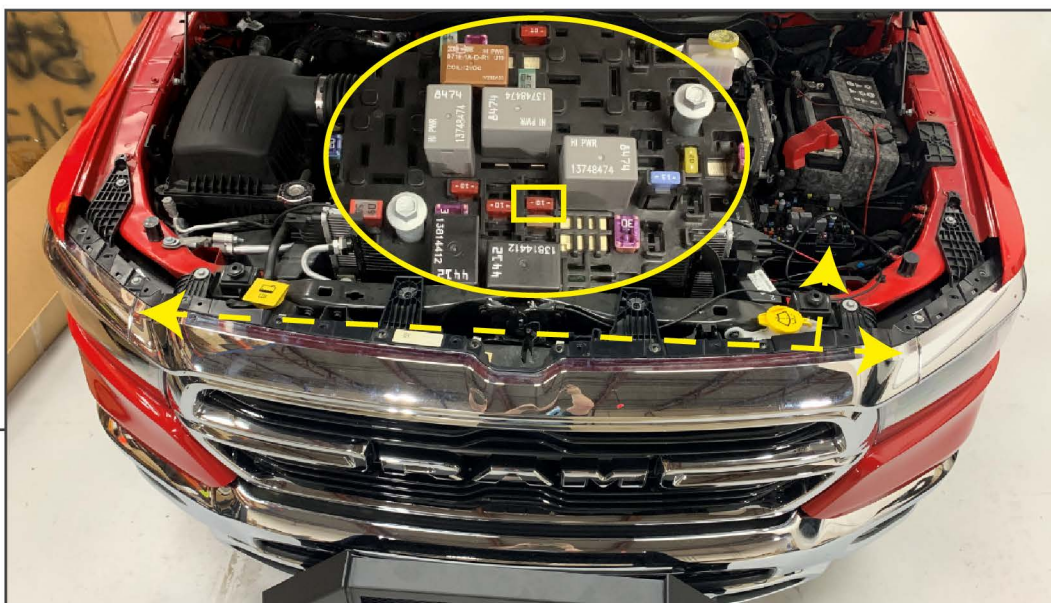
Repeat this procedure to the opposite side.



STEP 7

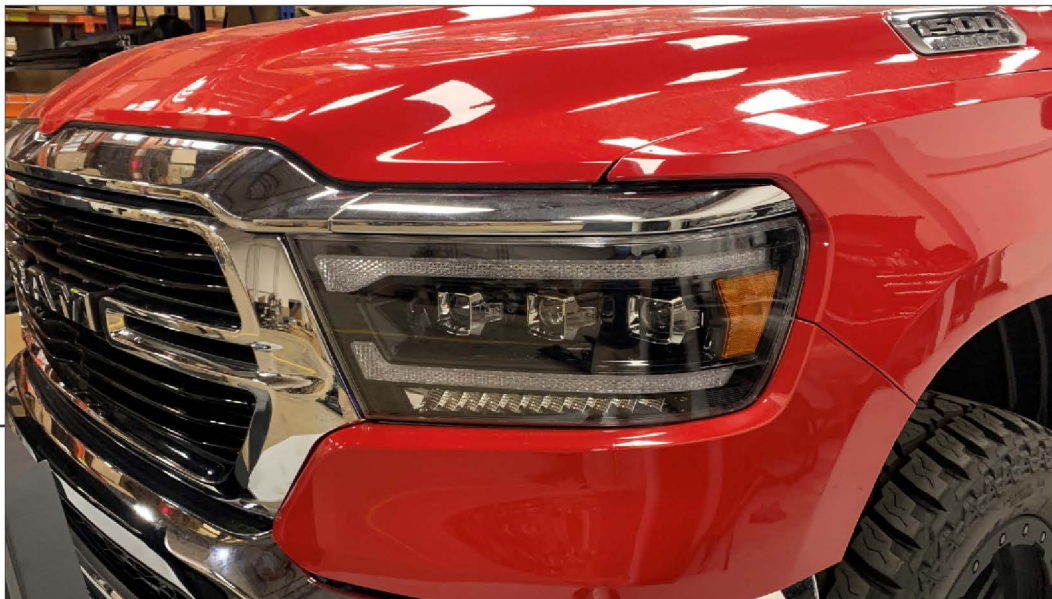
Remove (5) T-25 Torx screws from the lower plastic panel on the headlight. Remove the plastic panel from the headlight. Transfer the plastic panel and hardware to the new LED headlight.

Repeat this procedure to the opposite side.



STEP 8

Route the DRL harness neatly across the radiator support, clear of any moving parts. Ensure the fuse tap portion of the harness is on the driver side of the vehicle. Plug the fuse tap portion of the DRL harness into fuse F38.



STEP 9

Plug the headlight into the vehicle harness and the previously routed DRL harness. Begin re-assembling the vehicle following steps 1-6 in reverse order.

Note: Vehicle parking light wiring harness will not be used. Plug in wire harness adapter if required for application.

Installation is now complete.