



RAM

TAILGATE ASSIST

(2009-2018 RAM 1500/2500/3500)

INSTALLATION INSTRUCTIONS

CONTENTS

- (1) Tailgate Assist Shock
- (1) Upper Ball Mount Plate
- (1) Lower Ball Mount Stud
- (1) Cable Clamp
- (1) T-45 Torx Wrench

TOOLS REQUIRED

- Ratchet
- 10mm Wrench
- T-30 Torx Bit
- 13mm Socket
- Torque Wrench

SKU # R131217



STEP 1

Note: Install tailgate assist on LH (Driver) side only.

Remove the lift gate strap and remove the T-45 torx lift gate bolt.



STEP 2

Install the upper ball mount plate behind the upper lift gate Torx bolt. Reinstall lift gate strap.



RAM

STEP 3



Assemble the nutsert tool as follows: nutsert, washer, bearing, washer, nut, Allen bolt. Adjust the tool so that there is 3/4" between the flat washer and the head of the Allen bolt.

STEP 4



Place the nutsert assembly in the tailgate (if fitment is tight, gently tap the assembly in with a rubber mallet). Mark the nut for a visual reference when turning. Hold the Allen head bolt steady and turn the nut (9) full rotations. **Note: Do not turn the Allen bolt. Over-tightening the nutsert will cause damage to the threads.

STEP 5

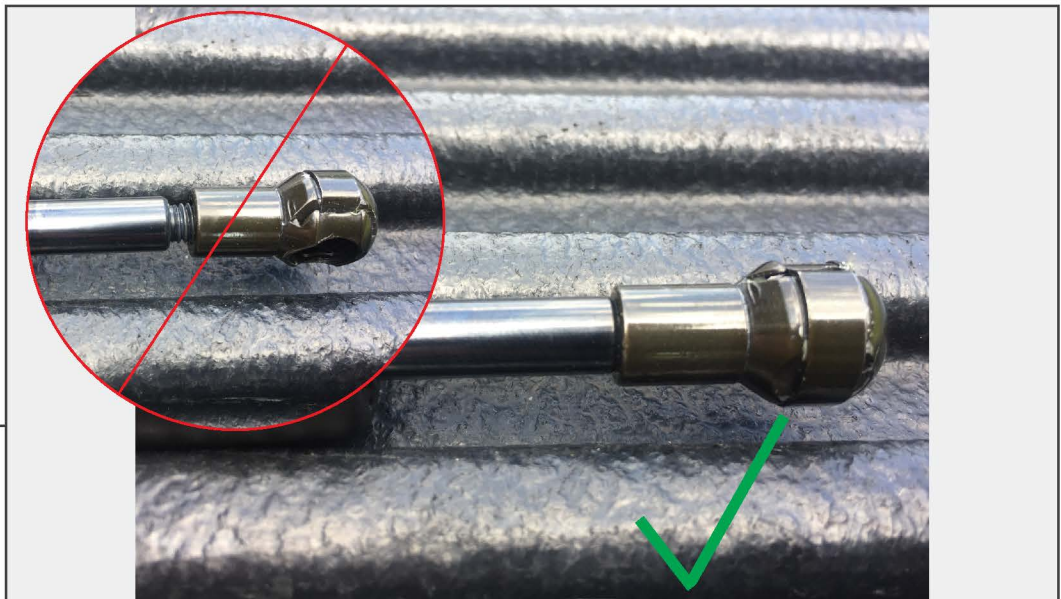
Apply blue thread lock to the threads of the ball mount. Torque the ball mount to 8ft-lbs.

STEP 6

Loosen the lower cable mount. Remove the limiting washer as pictured.

STEP 7

Install the cable clamp 3.5" below the upper cable end. This will prevent the cable from causing damage to the shock.

STEP 8

Before installing the shock ensure both of the shock ends are screwed on all the way.



RAM



STEP 9

Press the shock onto the ball stud mounts.

Installation is now complete.