



CAT-BACK EXHAUST SYSTEM

(2019-2022 1500 - 5.7L)

INSTALLATION INSTRUCTIONS

CONTENTS

- (1) Muffler Assembly
- (1) LH Exhaust Pipe
- (1) LH Tail Pipe
- (1) RH Exhaust Pipe
- (2) Exhaust Tips w/ Clamps
- (3) 2.5" Exhaust Clamps

TOOLS REQUIRED

- 13mm, 15mm, 16mm Sockets
- Ratchet
- Spray Lubricant
- Pry Bar
- Jack and Jack Stands

STEP 1



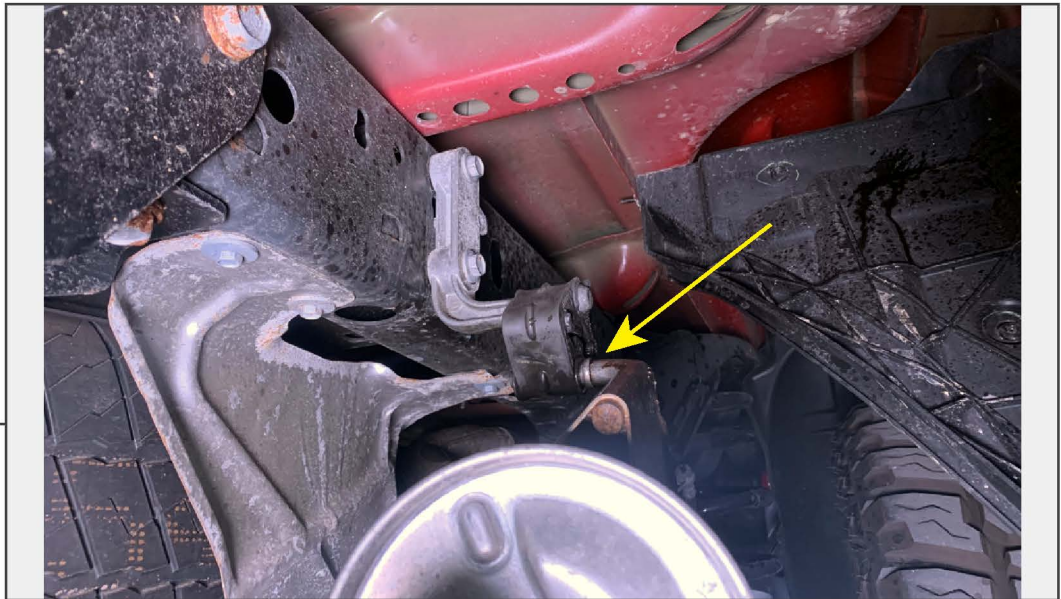
Lift and support the vehicle using a jack and jack stands. Loosen (1) exhaust clamp and remove the exhaust tip from the vehicle exhaust.

Repeat this procedure for the remaining exhaust tip.

STEP 2

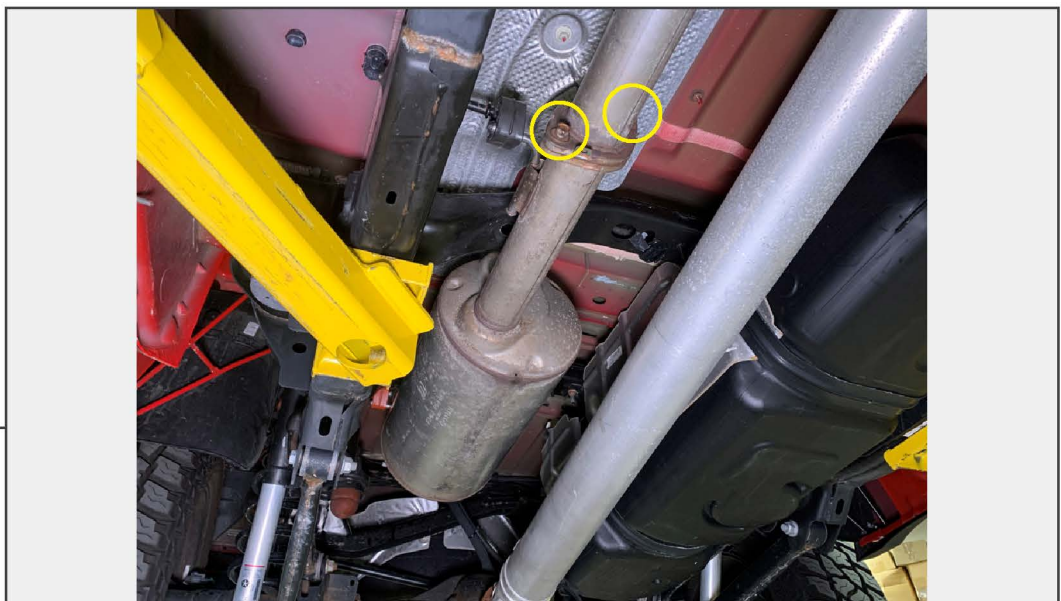


Loosen (1) exhaust clamp on the RH exhaust pipe.



STEP 3

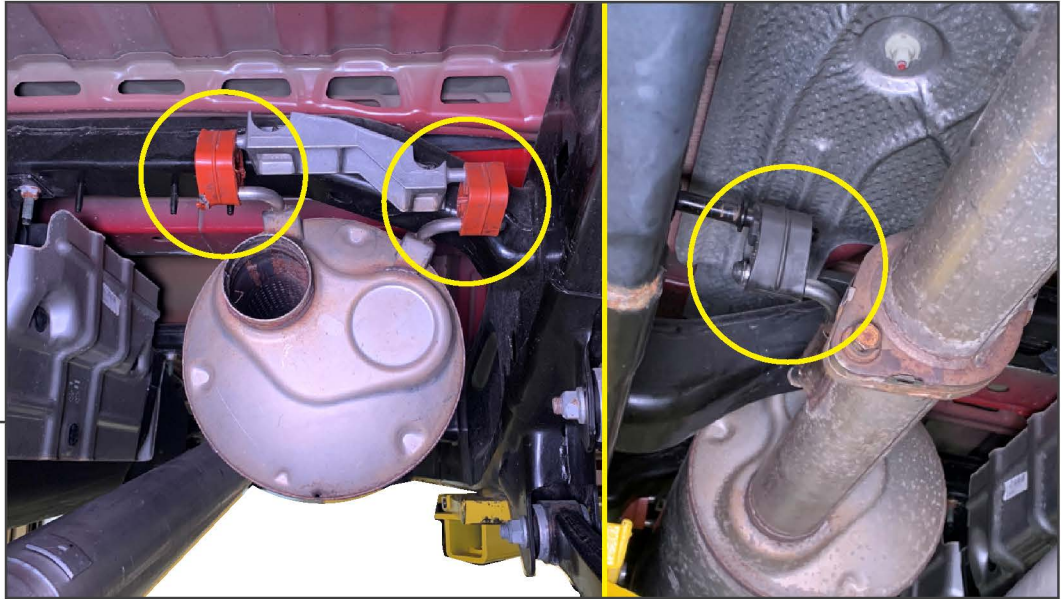
Use spray lubricant on the rear muffler exhaust hangers. Remove the RH side muffler pipe first, and remove the pipe assembly from the vehicle. Remove the LH side muffler hanger from the rubber hanger.



STEP 4

Remove (2) bolts from the front muffler flange.

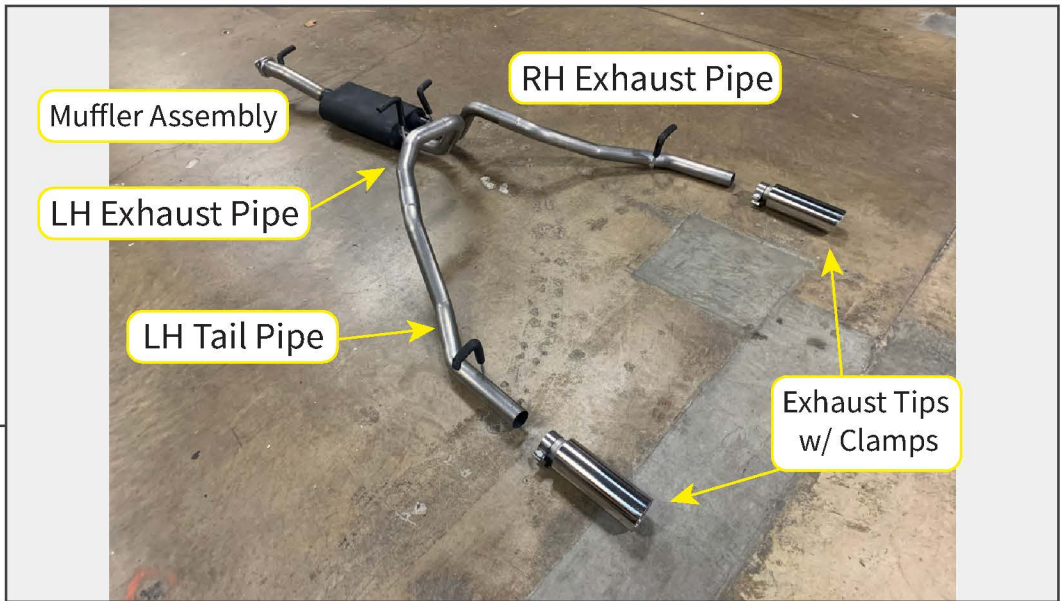
Note: Hardware will be reused.



STEP 5

Disconnect the (2) exhaust hangers from the top of the muffler assembly, following with the (1) exhaust hanger at the front muffler flange. Remove the ground strap, then remove the exhaust system from the vehicle.

Note: The muffler and LH side exhaust pipe is one piece. Cutting the exhaust can be done to ease disassembly, but is not required.



STEP 6

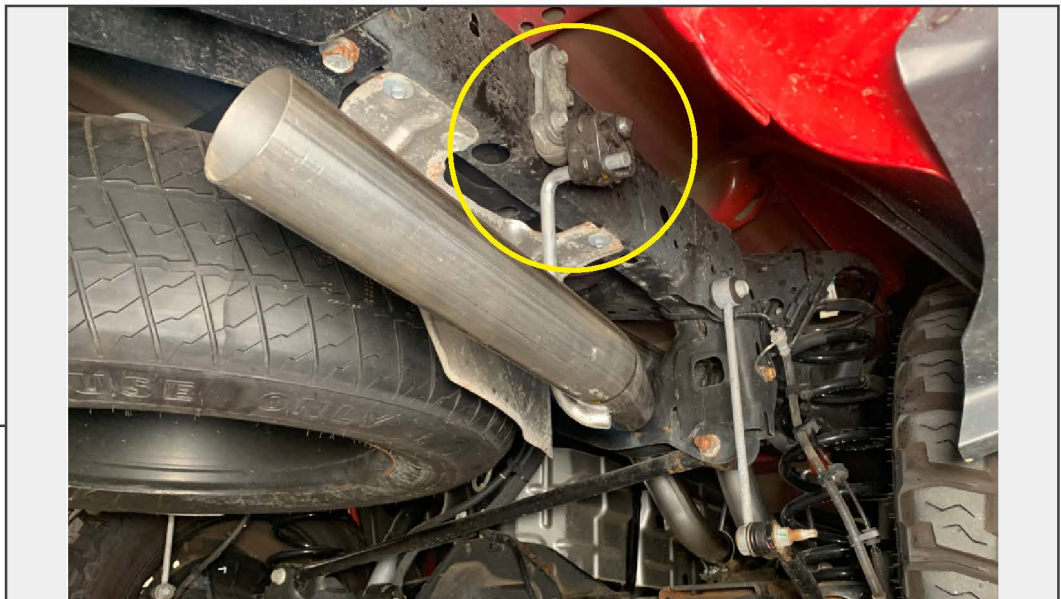
Identify the exhaust components.

STEP 7



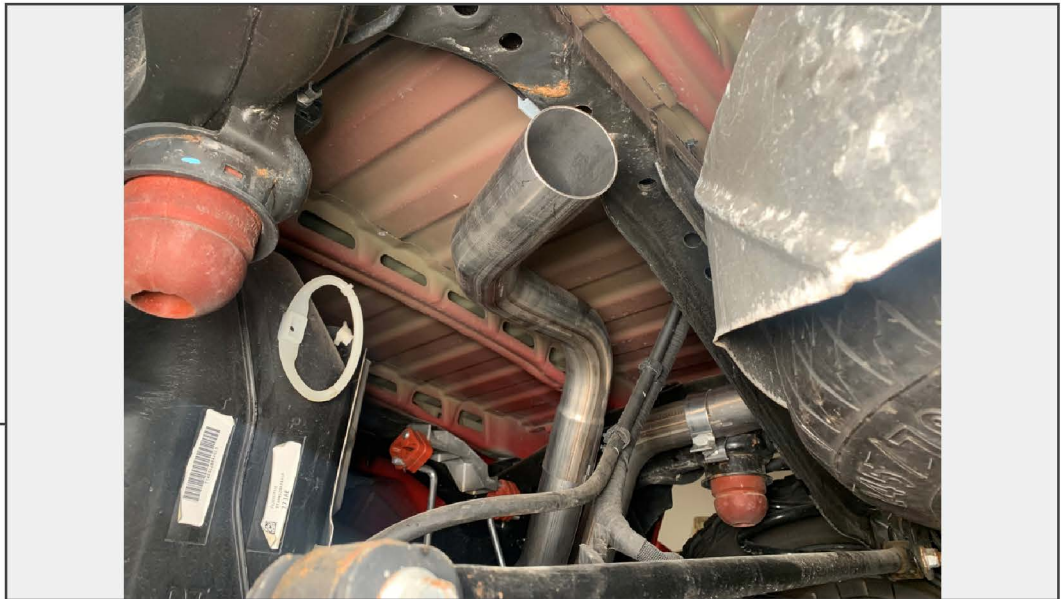
Install the muffler assembly into the (3) rubber hangers. Secure the muffler assembly to the front muffler flange using the (2) original bolts. Re-install ground strap. Fully tighten the flange bolts to 37 ft.-lbs.

STEP 8



Place (1) 2.5" exhaust clamp onto the RH exhaust pipe, and insert the pipe into the muffler assembly. Hang the exhaust pipe to the vehicle using the original rubber hanger.

STEP 9



Place (1) 2.5" exhaust clamp onto the LH exhaust pipe, and insert the pipe into the muffler assembly.

STEP 10



Place (1) 2.5" exhaust clamp onto the LH tail pipe, and insert the pipe into the LH exhaust previously installed.

STEP 11



Install the exhaust tips onto the LH and RH tail pipes to determine final install location. Adjust the pipes to the appropriate exhaust fitment.

STEP 12



Tighten all exhaust clamps to 45 ft.-lbs.

Installation is now complete.