



LED LICENSE PLATE LAMPS

(2019+ 1500)

INSTALLATION INSTRUCTIONS

CONTENTS

- (1) LH License Plate Lamp
- (1) RH License Plate Lamp

TOOLS REQUIRED

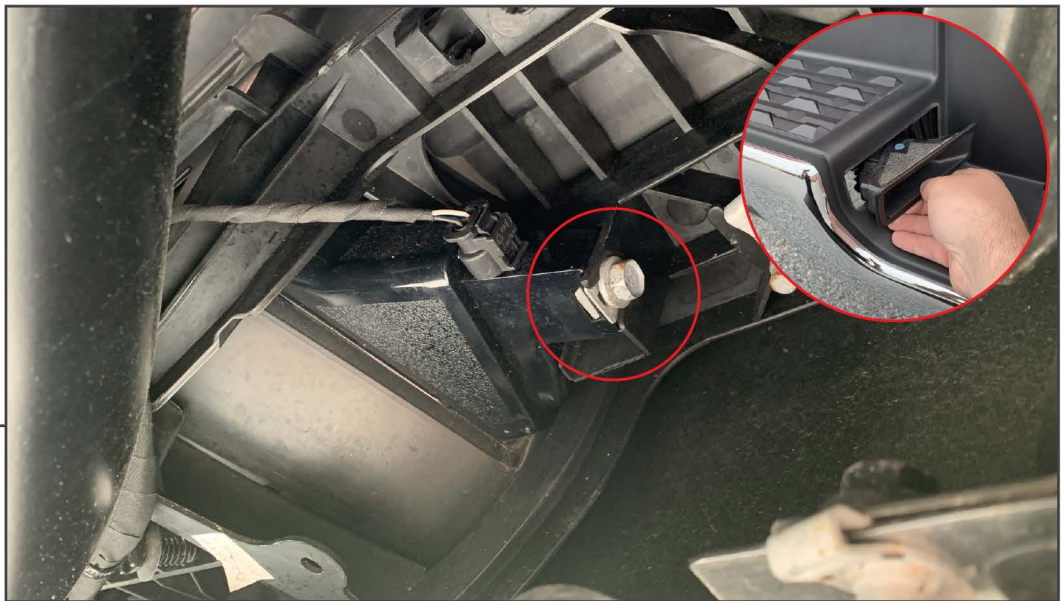
- 10mm Socket
- Ratchet

STEP 1



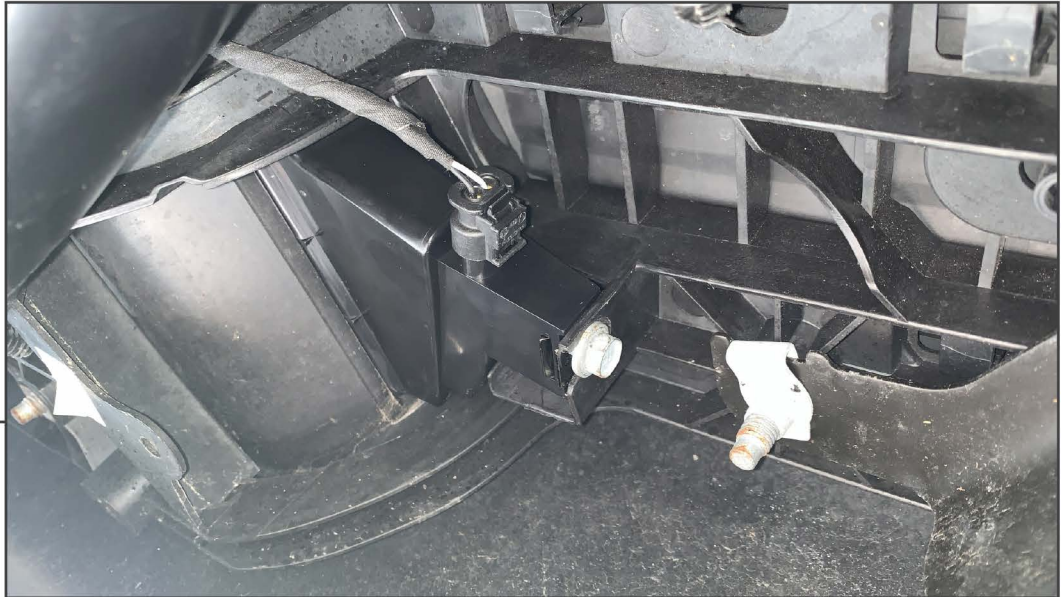
From under the vehicle, locate the wiring harness plugged into the license plate lamp housing. Unplug the harness by pressing in the tab while pulling the connector away.

STEP 2



Locate and remove the (1) 10mm bolt securing the license plate lamp to the rear bumper. Remove the original license plate lamp through the front of the bumper.

STEP 3



Install the new license plate lamp using the original 10mm bolt and tighten until secure. Plug in the vehicle wiring harness into the new license plate lamp (ensure proper connection by listening for an audible engagement click).

STEP 4



Repeat steps 1-3 for the remaining license plate lamp.

Installation is now complete.