



RANGER GRILLE

(2006-2008 1500)

INSTALLATION INSTRUCTIONS

CONTENTS

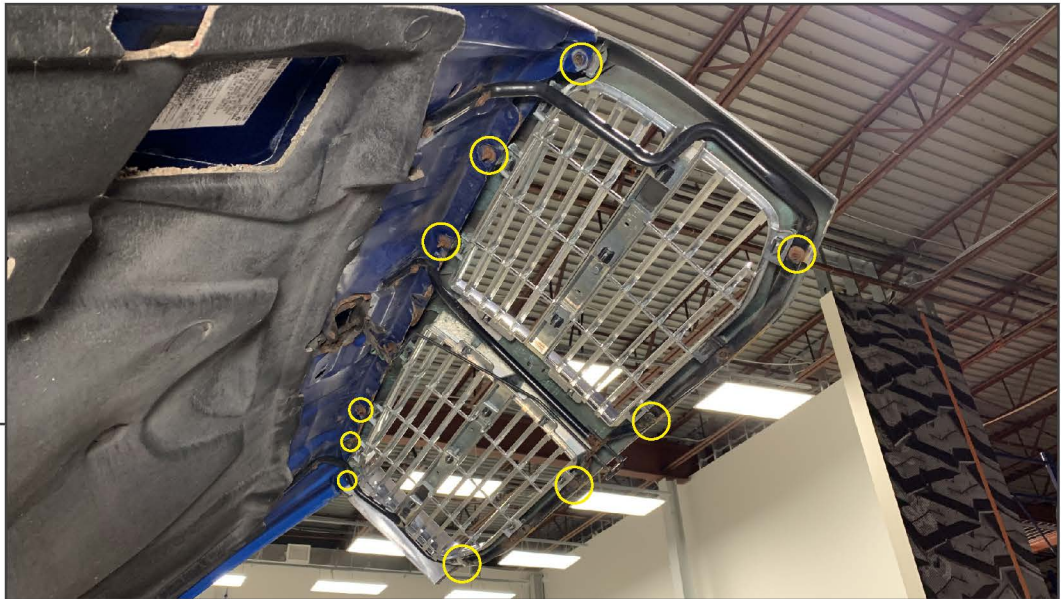
- (1) Grille
- (1) Wiring Harness
- (6) M6 Lock Nuts
- (6) M6 Flat Washers
- (6) Lower Grille Screws

TOOLS REQUIRED

- 8mm, 10mm Deep Sockets
- Ratchet & Extension

SKU # R136169

STEP 1

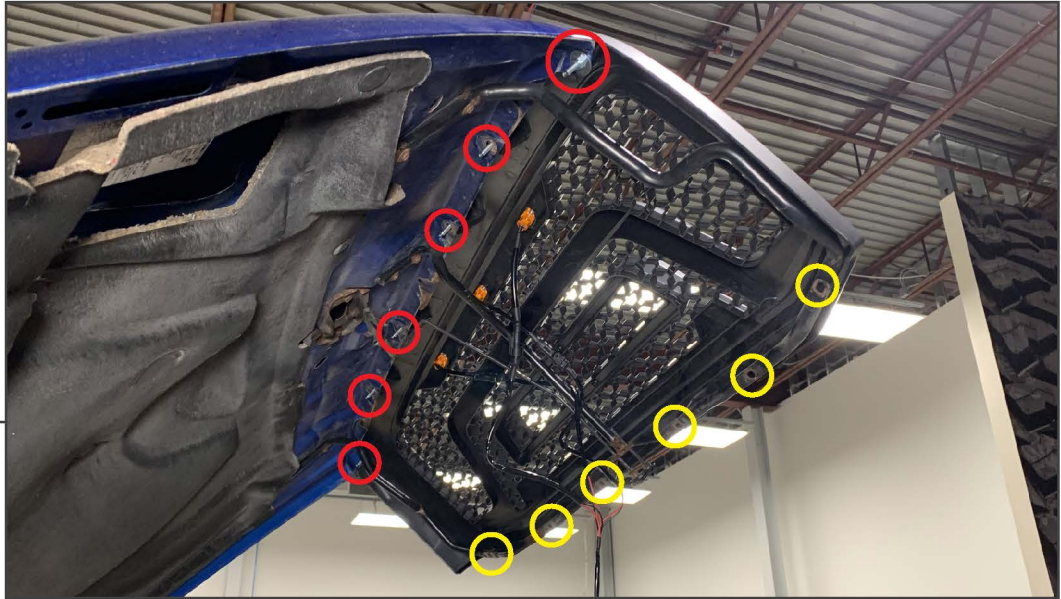


Open the vehicle hood. Remove (10) 8mm screws from the grille attached to the vehicle hood.

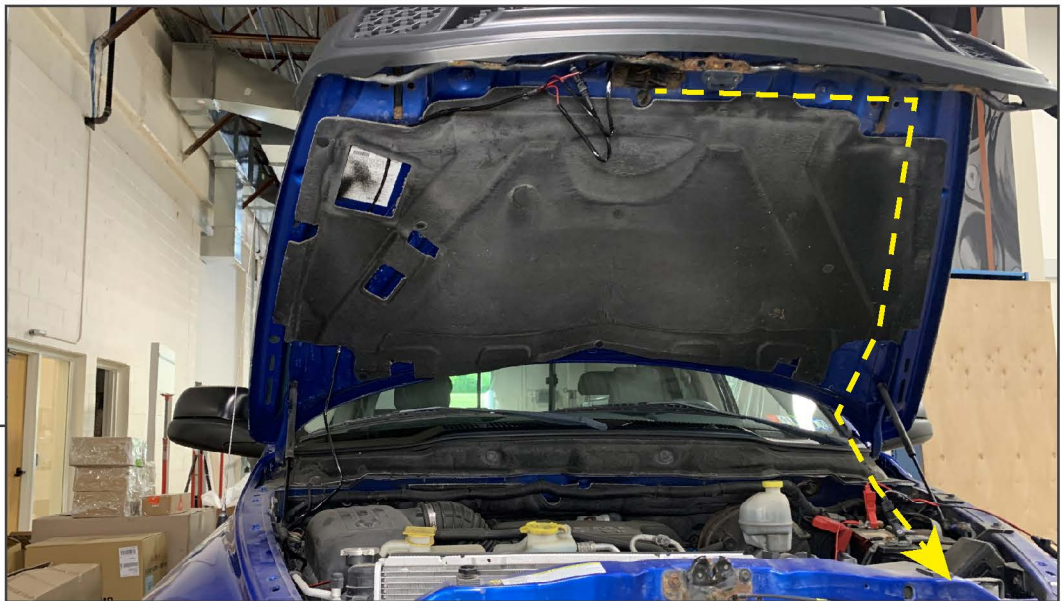
STEP 2



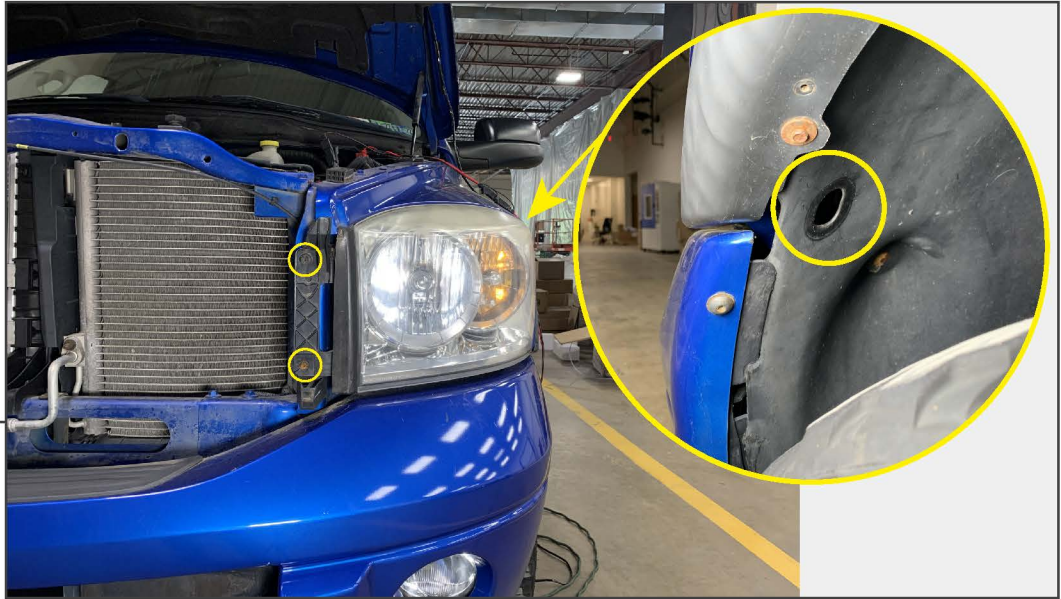
Lower the vehicle hood, and remove the grille from the vehicle.

**STEP 3**

Align the new grille and secure the top using (6) flat washers and (6) lock nuts. Secure the bottom of the grille using the provided (6) screws.

**STEP 4**

Connect the wiring harness to the (3) grille lights. Route the wiring harness behind the hood insulation, and towards the back of the hood. Then, neatly route the harness towards the front headlight.

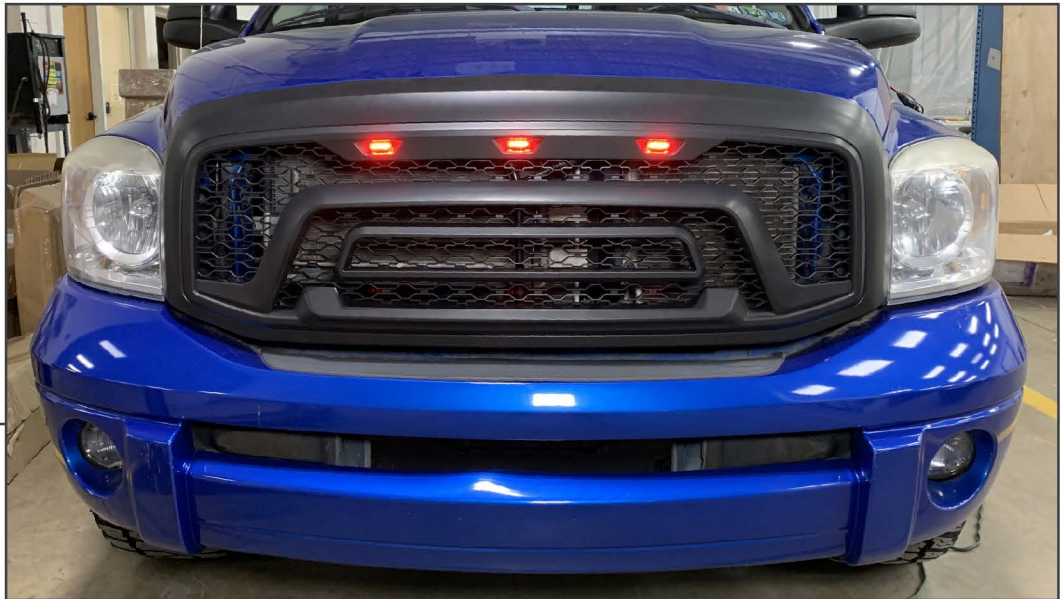
**STEP 5**

Remove the LH front headlight by removing (2) 10mm bolts from the front of the vehicle. Remove (1) 10mm bolt by the access hole in the fender liner.

**STEP 6**

Firmly pull the headlight from the vehicle, and locate the parking light wiring harness. Splice into the parking light using the following diagram.

Grille Lighting Harness	-	Vehicle Parking Light Harness
Red (+)	-	White/Yellow
Black (-)	-	Black/Brown



STEP 7

Close the vehicle hood and check lighting functionality.

Installation is now complete.