



MODULAR GRILLE GUARD

(2009-2018 1500)

INSTALLATION INSTRUCTIONS

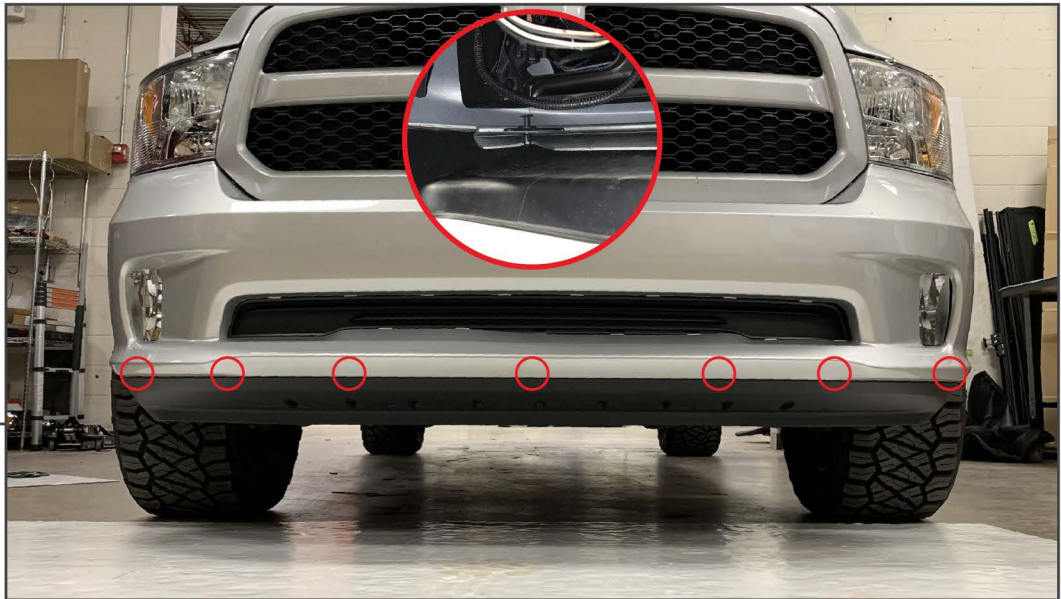
CONTENTS

- (1) LH Headlight Guard
- (1) RH Headlight Guard
- (2) Push Bars
- (1) Center Guard
- (1) Lower Cross Bar
- (1) LH Stud Bracket
- (1) RH Stud Bracket
- (1) LH Guard Mounting Bracket
- (1) RH Guard Mounting Bracket
- (1) LH Lower Support Bracket
- (1) RH Lower Support Bracket
- (1) LH Upper Mounting Bracket
- (1) RH Upper Mounting Bracket
- (10) M8x1.25 x 30mm Bolts
- (4) M8x1.25 x 20mm Allen Bolts
- (4) M8 Lock Washers
- (20) M8 24mm Diameter Flat Washers
- (4) M8 22MM Diameter Flat Washers
- (10) M8 Nylon Lock Nuts
- (8) M12X1.75X35mm Bolts
- (2) M12X1.50X30mm Bolts (Fine Thread)
- (14) M12 Lock Washers
- (22) M12 Flat Washers
- (12) M12 Nuts
- (2) M5 Allen Bolts
- (4) M5 Washers
- (2) M5 Nuts
- (1) 5MM Allen Wrench
- (1) 3mm Allen Wrench

TOOLS REQUIRED

- 10mm, 13mm Wrenches
- 13mm, 18mm, 19mm Sockets
- Ratchet
- Panel Removal Tool

SKU # R138681
Edited: 07/06/2022



STEP 1

From under the vehicle, remove (7) plastic push clips from the inside of the bumper.



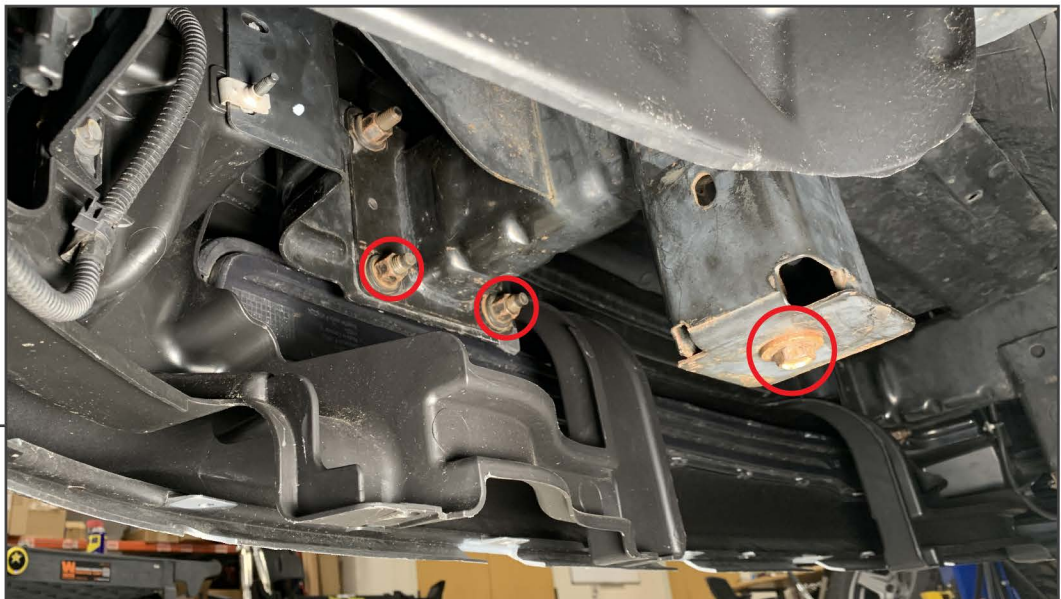
STEP 2

From under the vehicle, remove (4) plastic push clips on the outside of the bumper.



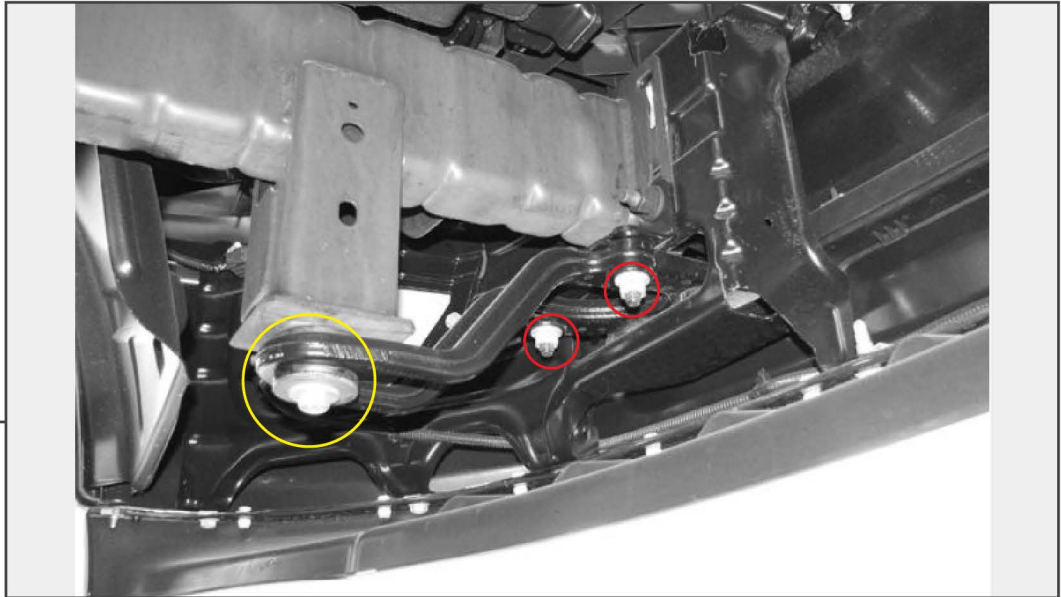
STEP 3

Firmly pull the lower splash guard away from the front bumper assembly.



STEP 4

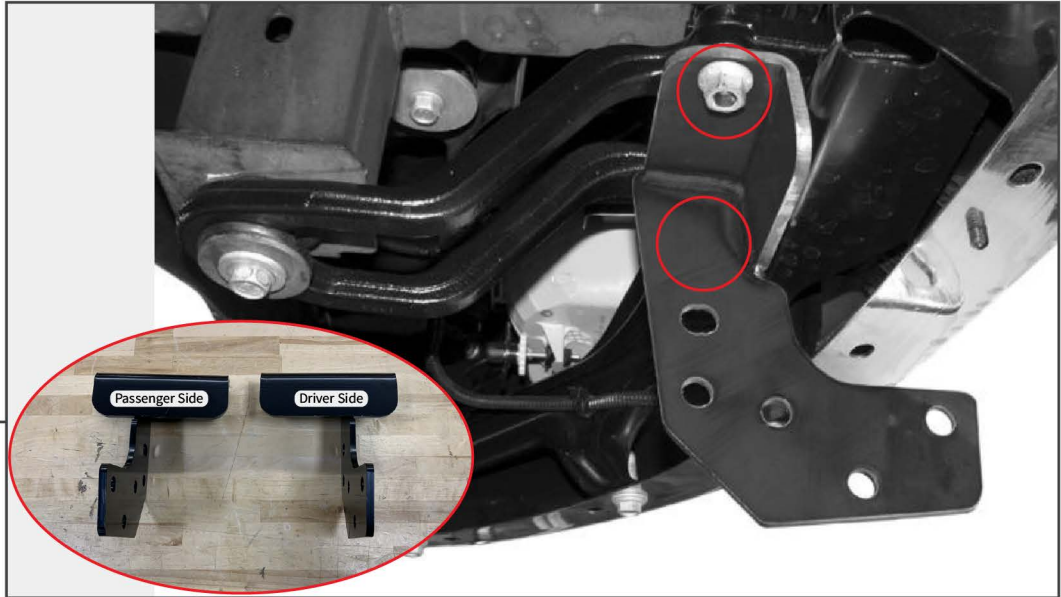
For vehicles without OEM Tow Hooks: Remove (2) 18mm nuts and (1) 18mm bolt from the vehicle on each side.

**STEP 5**

For vehicles with OEM Tow Hooks: Remove the (2) 18mm tow hook mounting nuts on each side of the vehicle. Loosen, do not remove the rear 18mm tow hook mounting bolt.

**STEP 6**

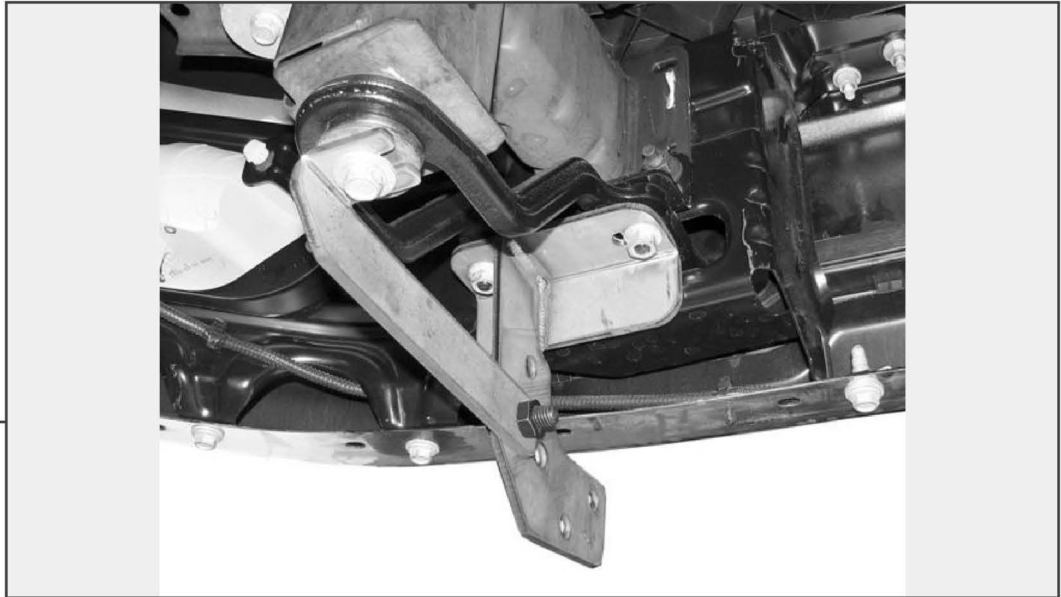
For vehicles without OEM Tow Hooks: Install the (1) stud bracket onto each side of the vehicle, and secure to the vehicle frame using the (2) original 18mm nuts. Do not fully tighten.

STEP 7

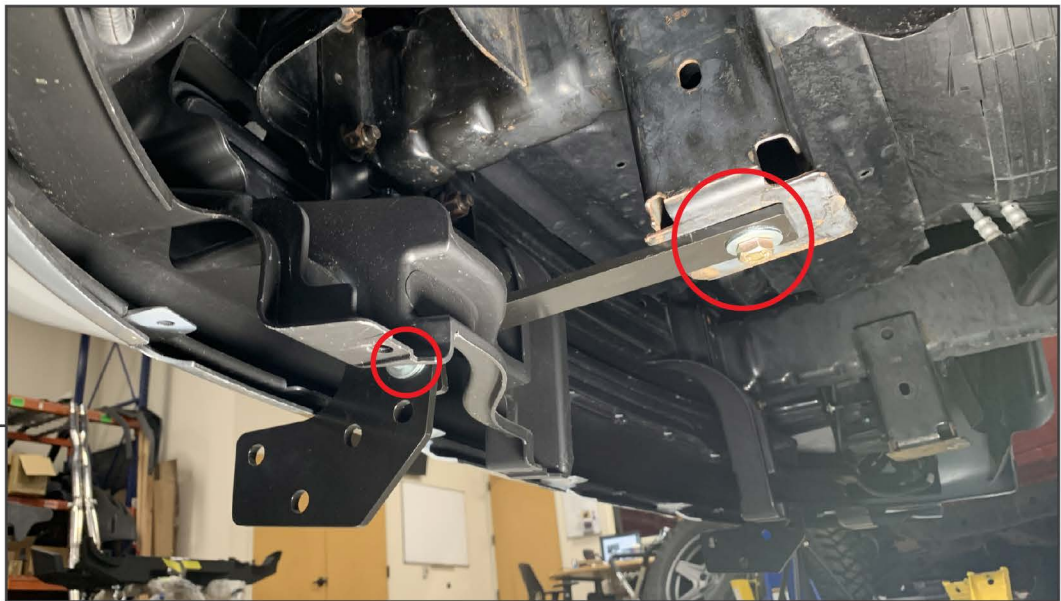
For vehicles with OEM Tow Hooks: Loosely secure the lower mounting bracket to the tow hook studs using the (2) original 18mm nuts.

STEP 8

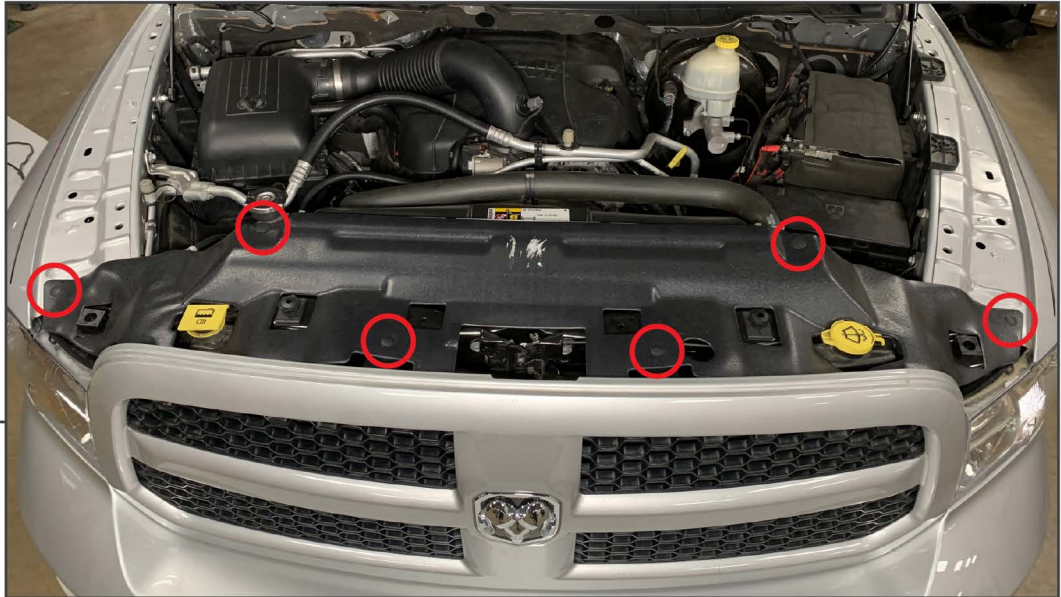
For vehicles without OEM Tow Hooks: Install the lower mounting bracket to the previously mounted stud plate using (2) M12 flat washers, (2) M12 lock washers, and (2) M12 nuts. Do not fully tighten.

STEP 9

For vehicles with OEM Tow Hooks: Slide the lower support bracket into the rear tow hook bolt. Secure the support bracket to the lower mounting bracket using (1) M12x1.75 x 35mm bolt, (1) M12 lock washer, (2) M12 flat washers, and (1) M12 nut. Do not fully tighten.

STEP 10

For vehicles without OEM Tow Hooks: Align the lower support bracket into the rear bolt hole, and insert (1) M12x1.50x 30mm bolt (fine thread), (1) M12 lock washer, and (1) M12 flat washers. . Secure the support bracket to the lower mounting bracket using (1) M12x1.75 x 35mm bolt, (1) M12 lock washer, (2) M12 flat washers, and (1) M12 nut. Do not fully tighten hardware

**STEP 11**

Open the vehicle hood. Remove the upper splash shield by removing (6) plastic push clips.

**STEP 12**

Remove (1) 10mm bolt from the top of the headlight assembly using a 10mm wrench.

**STEP 13**

Place the upper mounting bracket between the radiator support and the headlight mounting tab. Secure the bracket into place using the original 10mm bolt. Do not fully tighten.

**STEP 14**

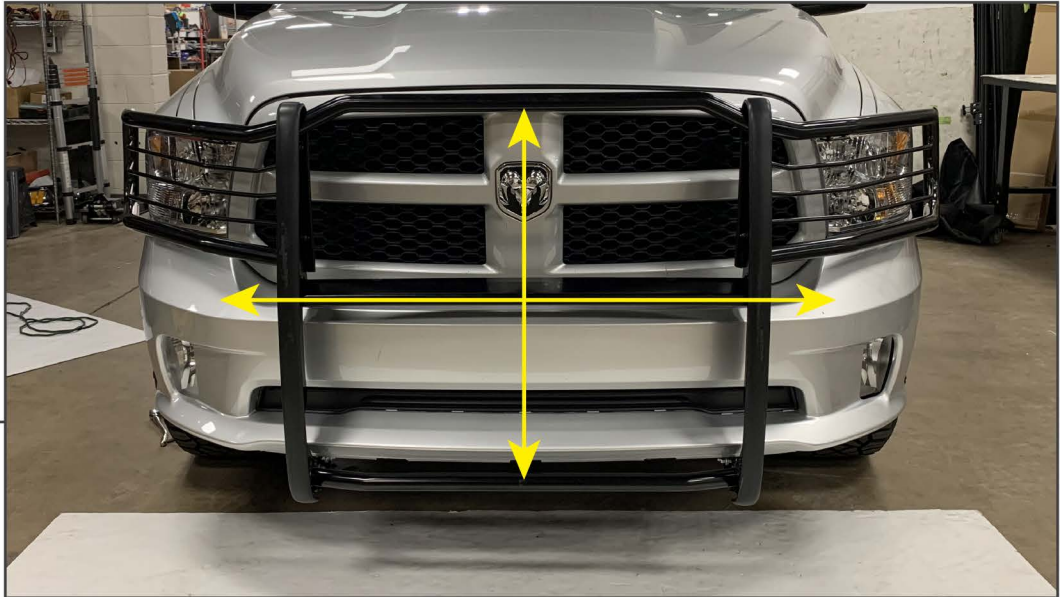
Place the grille guard components on a soft surface. Assemble the components using (10) M8x1.25 x 20mm bolts, (20) M8 flat washers, and (10) M8 lock nuts. Do not fully tighten.

**STEP 15**

Align the grille guard to the lower mounting brackets, ensuring the brackets are on the inside of the grille guard. Secure the grille guard to the brackets using (3) M12x1.75 x 35mm bolts, (3) M12 lock washers, (6) M12 flat washers, and (3) M12 nuts per side.

**STEP 16**

Align the top of the grille guard to the upper mounting brackets, and secure using (2) M8x1.25 x 20mm Allen bolts, (2) M8 lock washers, and (2) M8 flat washers per side.

**STEP 17**

Adjust the grille guard as necessary for a symmetrical fit on the vehicle. Once adjusted, tighten all mounting hardware to secure the assembly into place.

**STEP 18**

Lower splash shield: If desired, trim the lower splash shield to fit around the grille guard mounting brackets, and secure to the bumper using the original plastic clips or the provided M5 hardware.

Installation is now complete.