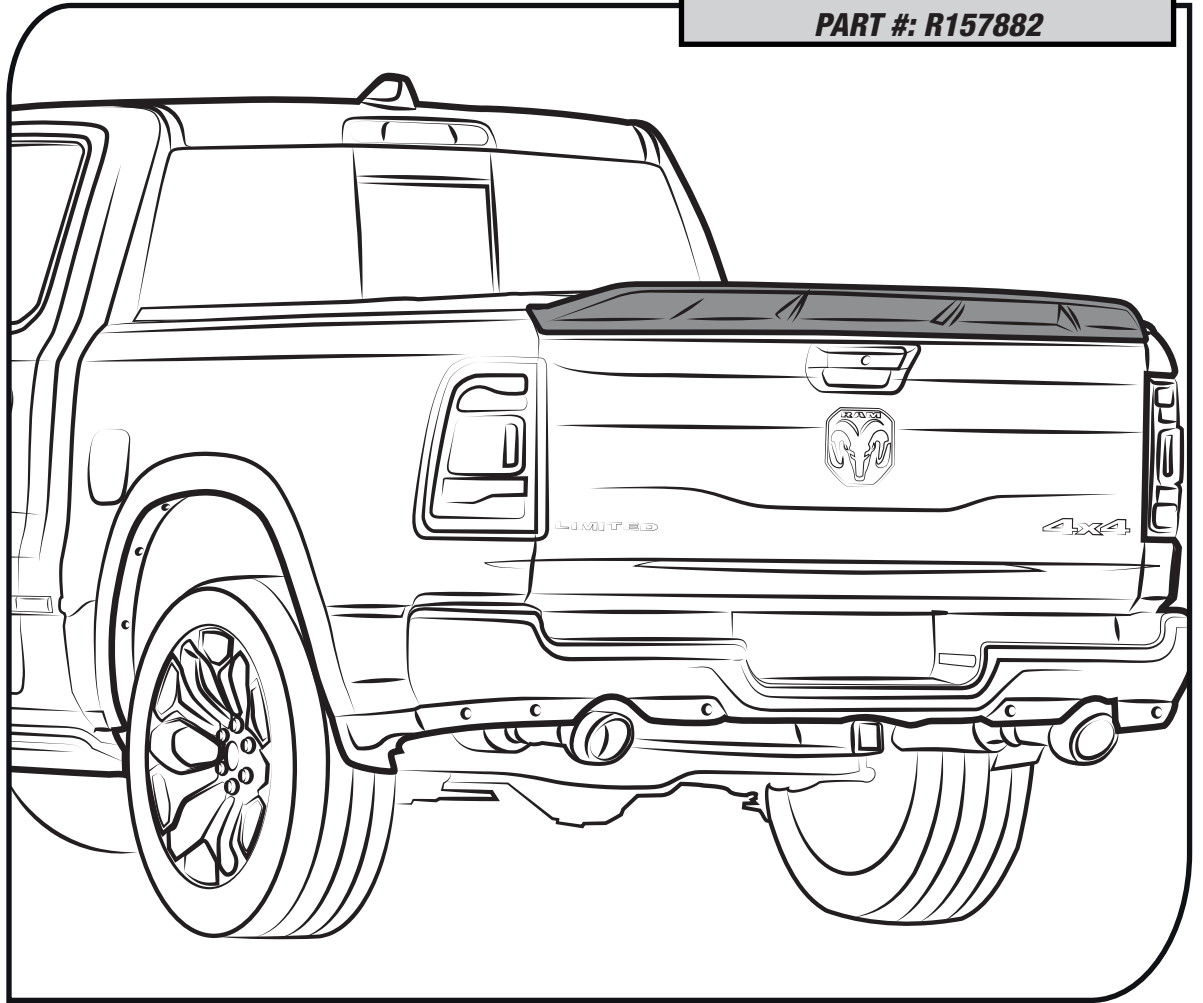


TAILGATE SPOILER
PART #: R157882


READ CAREFULLY
BEFORE INSTALLATION


WASH BEFORE
INSTALLING




WE RECOMMEND
2 PERSONS FOR
INSTALLATION

AFTER INSTALLING

DO NOT
WASH CAR

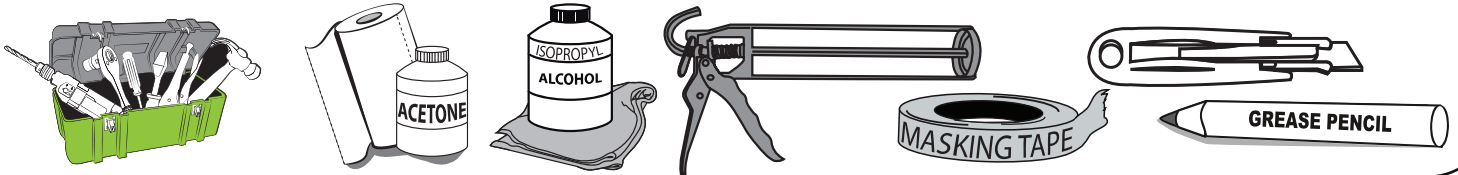



24 hrs

DRIVE SLOWLY
25 mph max





TOOLS



CHECK LIST

***ALREADY INSTALLED IN THE PART**

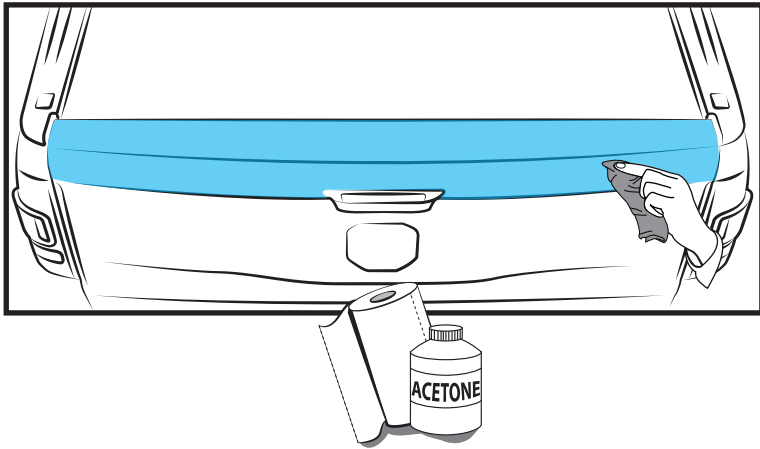
ITEM	DESCRIPTION	DRAWING	AMOUNT
A	*VHB TAPE		*INCLUDED IN THE PART
B	ADHESION PROMOTER		1 PC



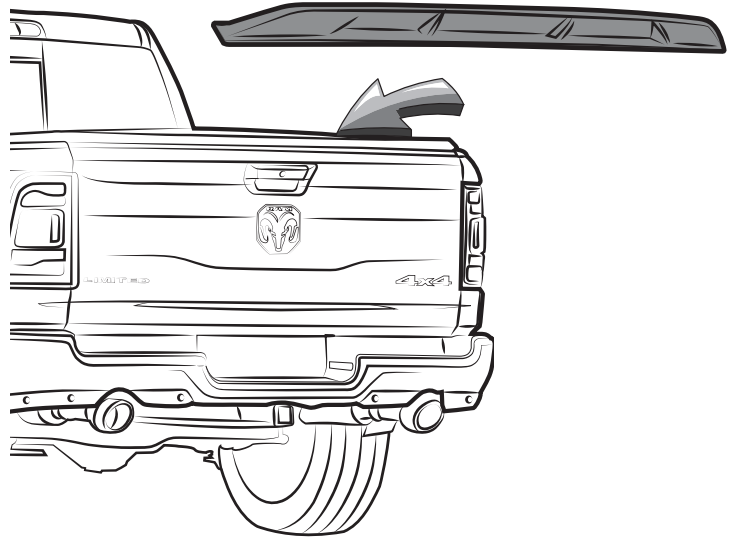
Vehicle and part must be at 16°C or 60°F or more before installation.

Keep the vehicle and parts in an environment that is within the recommended installation temperature range for 4 hours.

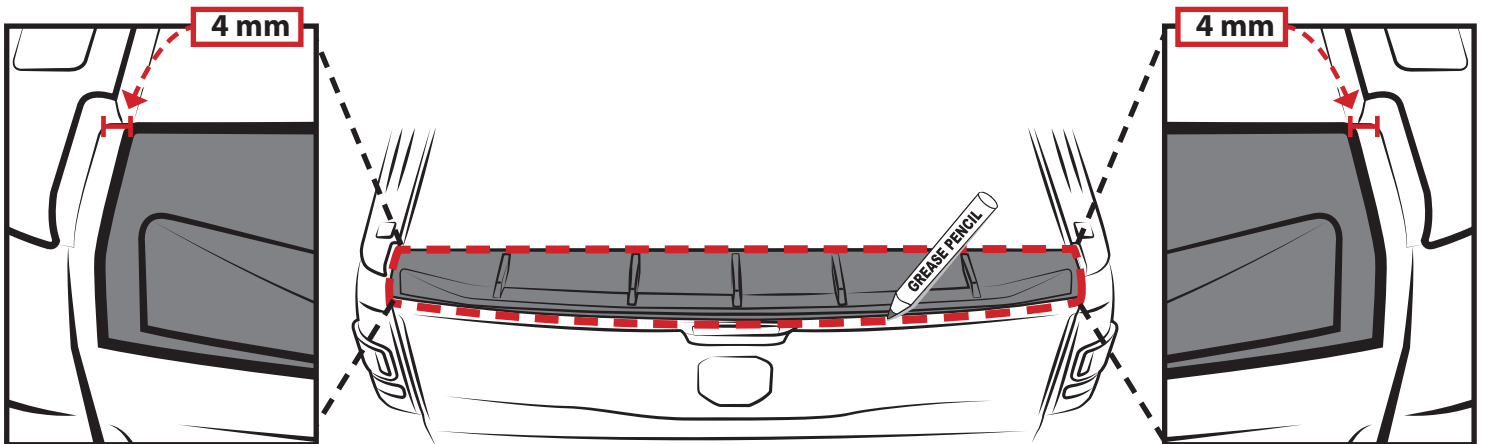
1 CLEAN



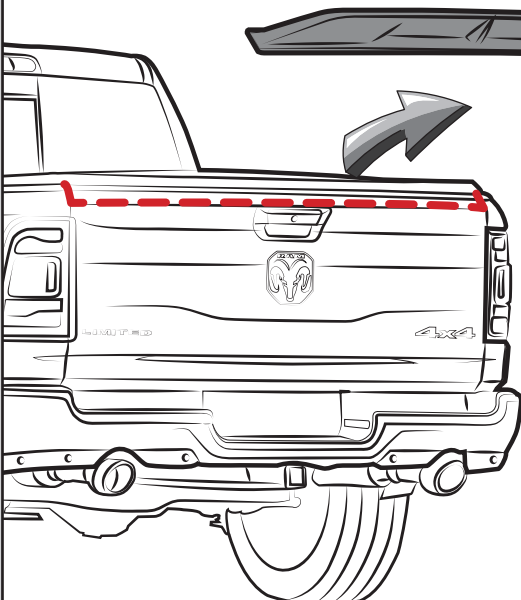
2 PRE-INSTALL



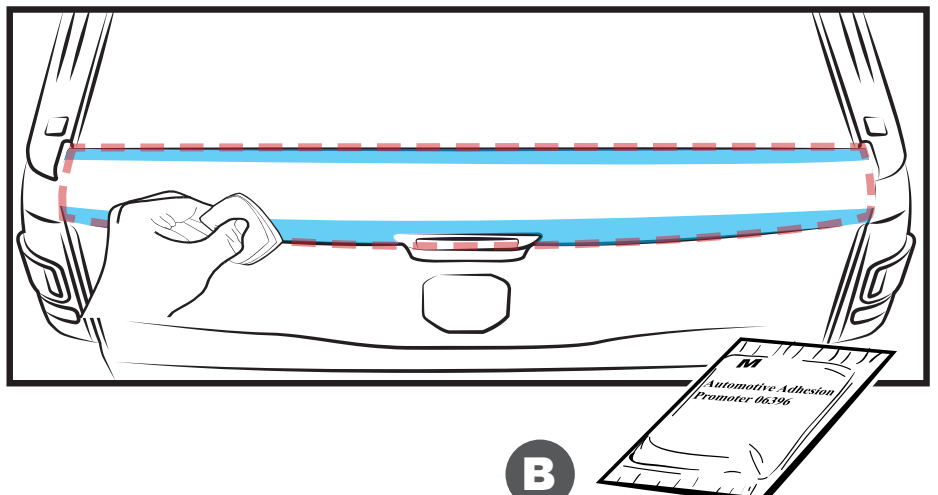
3 MARK



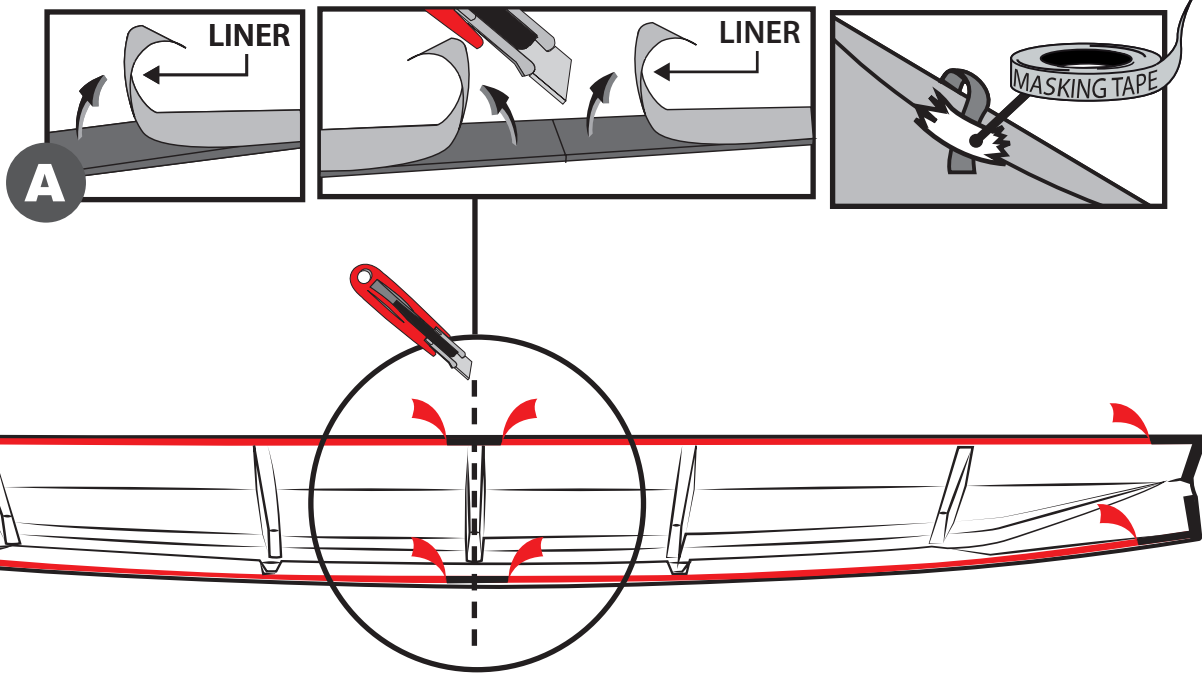
4 REMOVE



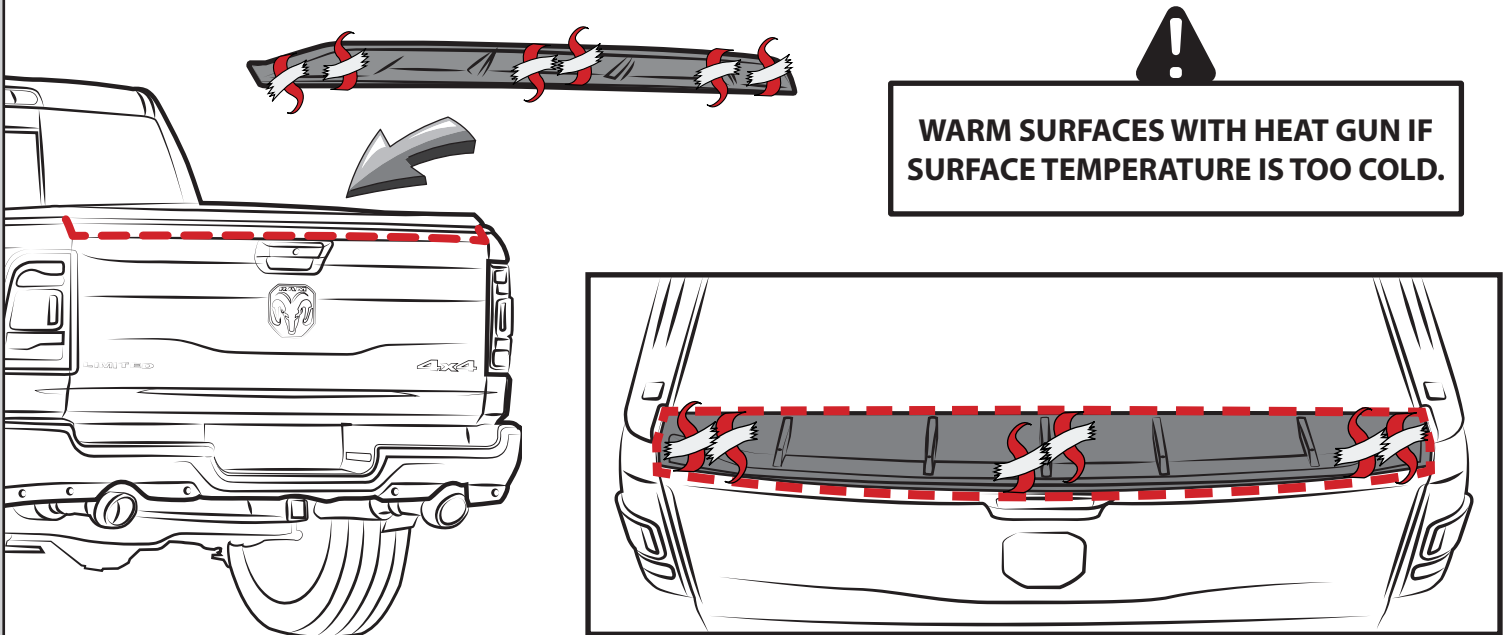
5 ADHESION PROMOTER



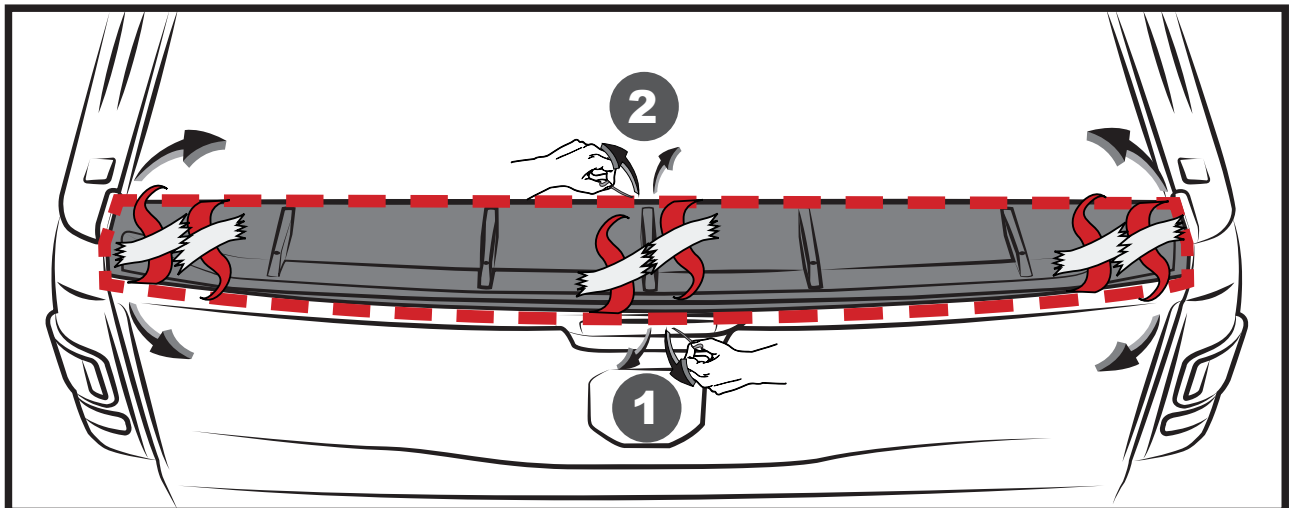
6 PEEL



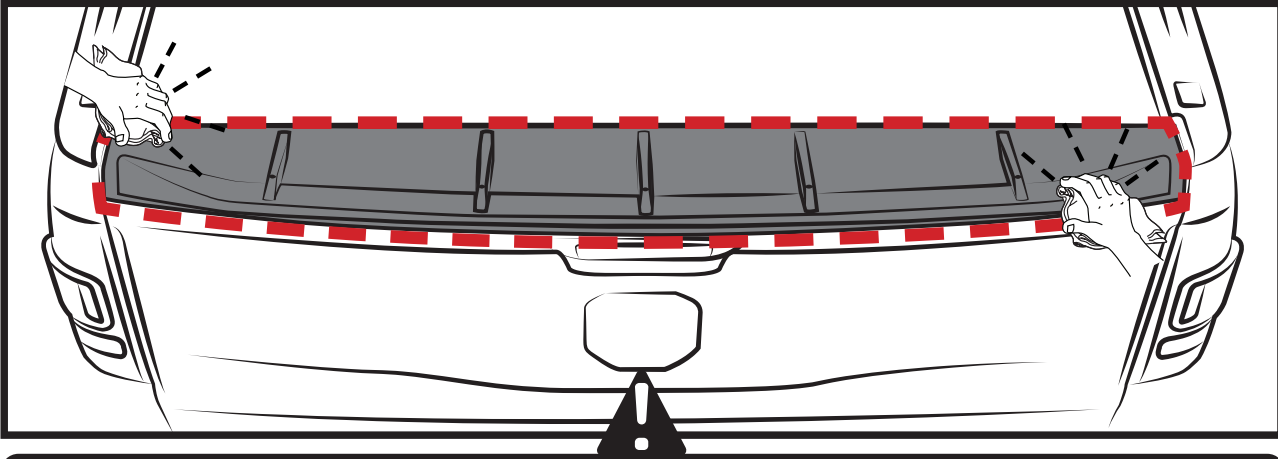
7 PLACE



8 REMOVE LINER

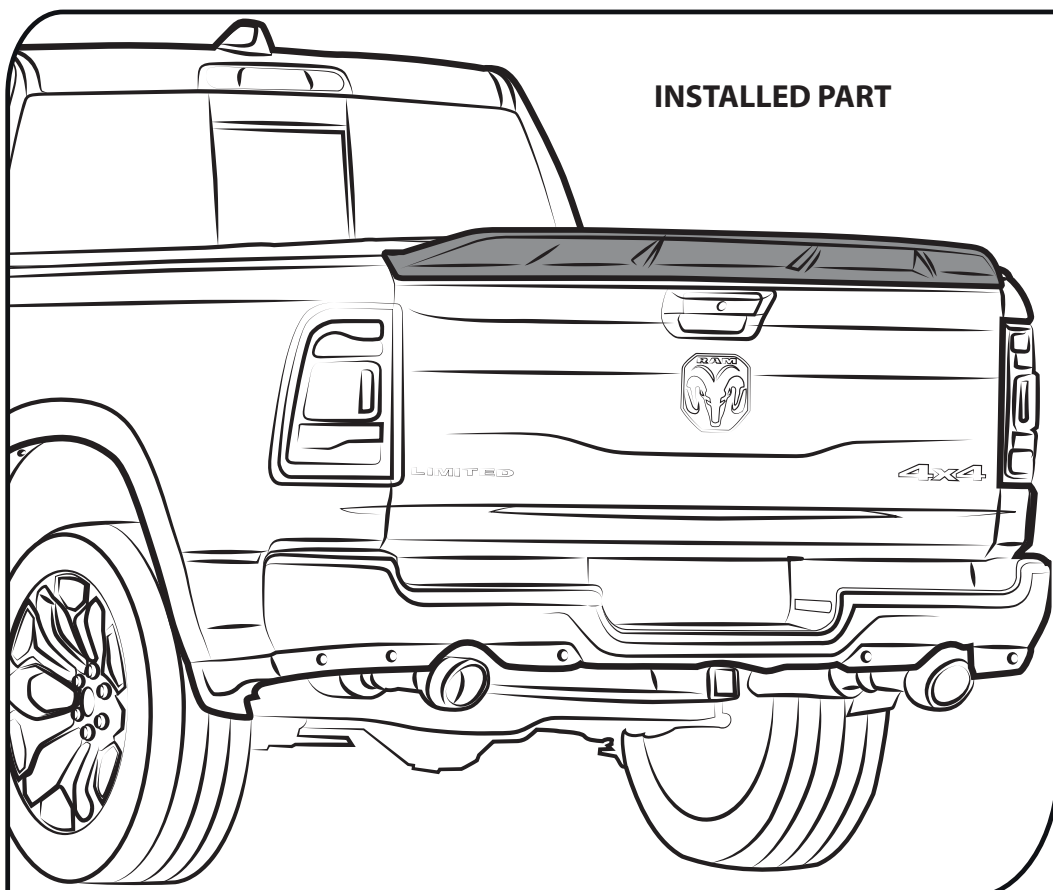
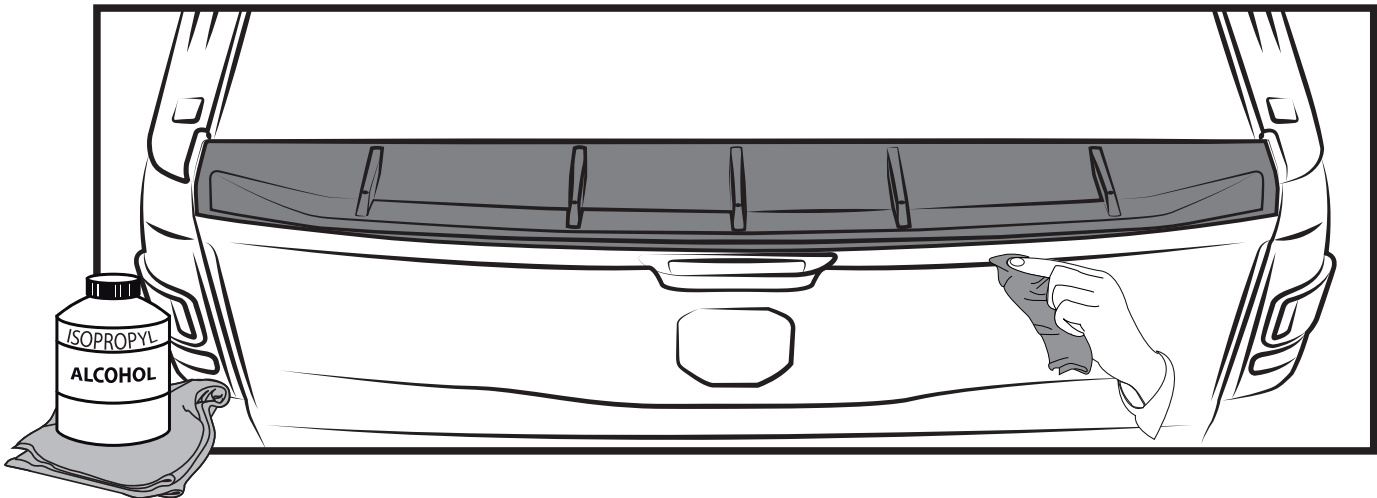


9 PRESS



DURING APPLICATION, THE VEHICLE, ADD ON PARTS AND TAPE MUST BE AT OR ABOVE 16 °C OR 60 °F. A FULL SURFACE CONTACT BETWEEN TAPE AND SUBSTRATE IS IMPORTANT FOR GOOD ADHESION PERFORMANCE. CONTACT IS ACHIEVED BY APPLYING PRESSURE. IN PRACTICE A PRESSURE BETWEEN 40 AND 50 N/CM² IS USUALLY NEEDED.

10 CLEAN OFF GREASE PENCIL MARK



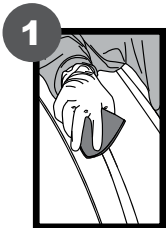
INSTRUCTIONS PAINTING

IF THE PART IS IN FIRST, APPLY THE FOLLOWING PROCESS

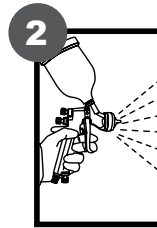


PLEASE READ CAREFULLY BEFORE STARTING WITH PAINTING PROCESS

BODYCOLOR PAINTING INSTRUCTIONS



1 SAND THE PART SOFTLY WITH A 400 GRAINS SAND PAPER OR WITH A SCOTCH-BRITE RED SPONGE. BE CAREFUL NOT TO DAMAGE FACTORY SATIN BLACK FINISH. CLEAN WITH ISOPROPYL ALCOHOL AFTERWARDS.



2 APPLY A GOOD QUALITY 2K PRIMER.



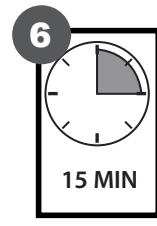
3 CHECK THE PARTS MINUTELY, THESE MUST HAVE A SMOOTH FINISH.



4 DUST ANY POWDER PARTICLE WITH A FLANNEL TOWEL BEFORE APPLYING THE PAINT.



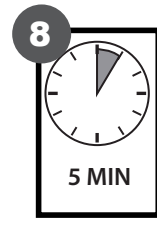
5 APPLY BASE COAT TO GET A SMOOTH AND FINE FINISH.



6 WAIT 15 MINUTES, CHECK MINUTELY AND DETAIL WHERE NECESSARY.



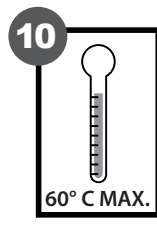
7 APPLY A THIN LAYER OF VARNISH.



8 WAIT 5 MORE MINUTES.



9 VARNISH PLENTY UNTIL YOU GET THE DESIRED BRIGHT AND FINISH. WAIT 5 MORE MINUTES.



10 CURE AT A MAXIMUM TEMPERATURE OF 60°C (140°F) FOR 15 MINUTES. DO NOT EXCEED SUGGESTED TEMPERATURE.



IMPORTANT



MAKE SURE THE PART IS SECURED CORRECTLY TO THE BASE DURING PAINT AND CURE PROCESS TO AVOID ANY RISK OF FALLING.