



Front Bumper

Installation Instructions Part Number: R171673

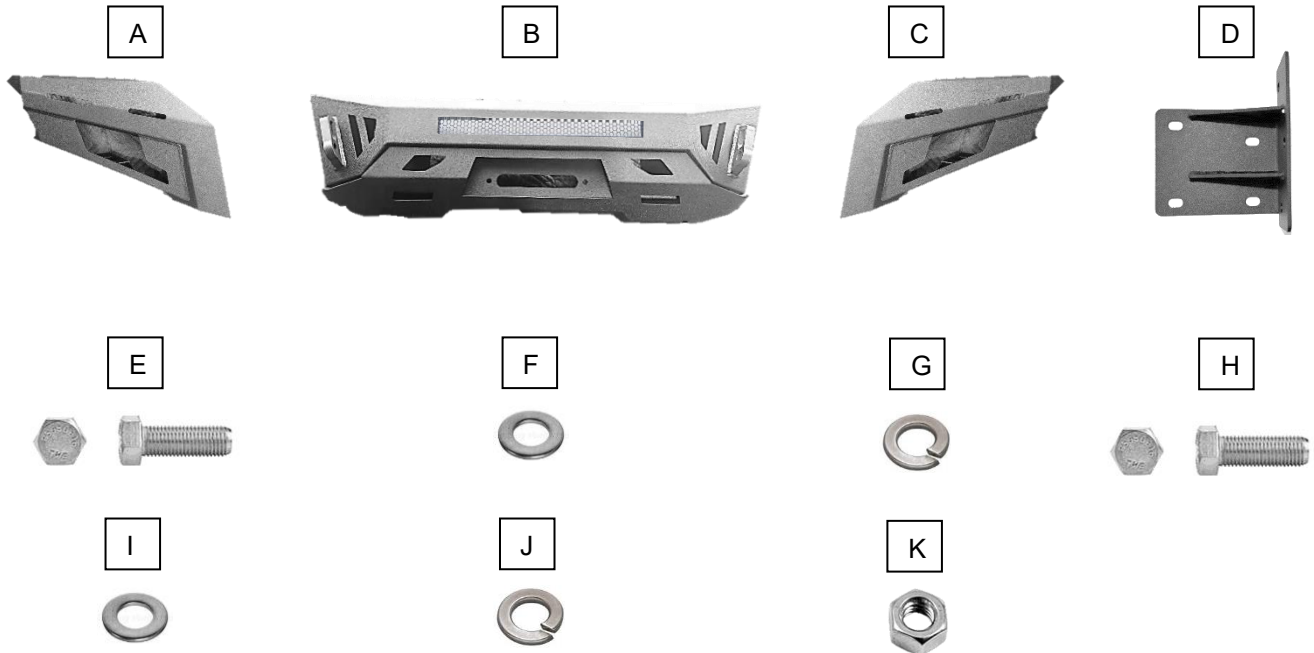
Fits 13-18 Dodge Ram 1500

Hardware Included

- A. 1 ea. Passenger side wing
- B. 1 ea. Center bumper
- C. 1 ea. Driver side wing
- D. 2 ea. Mounting brackets
- E. 10 ea. M8 x 1.25 x 20mm hex head bolt
- F. 10 ea. M8 flat washer
- G. 10 ea. M8 split washer
- H. 14 ea. M12x1.75x45mm hex head bolt
- I. 28 ea. M12 flat washer
- J. 14 ea. M12 split washer
- K. 8 ea. M12x1.75 hex head nut

Tools Needed

- 18mm socket
- 18mm wrench
- 15mm wrench
- 13mm wrench
- 10mm socket
- 7mm socket
- Ratchet
- Plastic clip removal tool

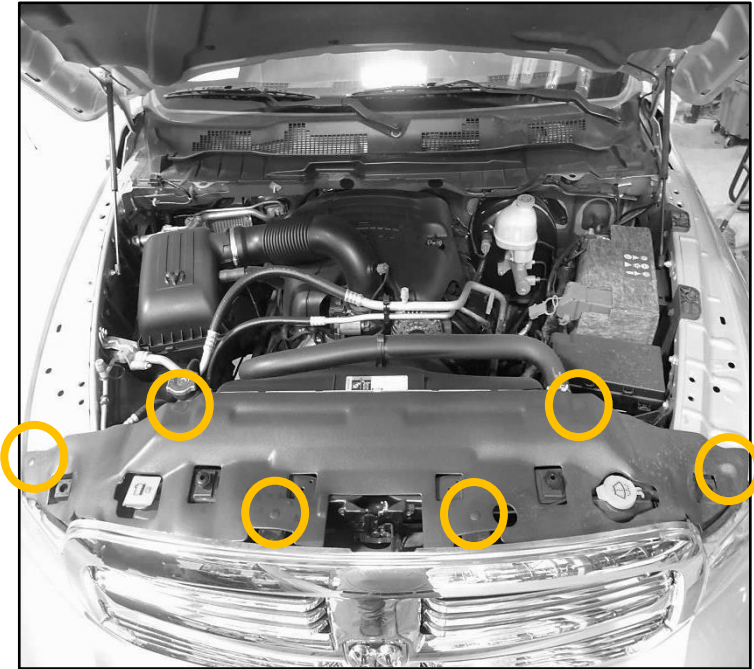


Please take a few minutes to read and thoroughly familiarize yourself with the installation procedures outlined in this manual. Following the steps as outlined will save you time and help reduce mistakes. Once the instructions are reviewed, if you feel that you are not capable of safely installing the parts seek the help of a qualified installation expert to help you complete the job. The manufacture is in no way responsible for any personal injury or vehicle damage that may occur

California Proposition 65 Warning!

This product includes a power cord which may contain lead a chemical known to the State of California to cause cancer and birth defects or other reproductive harm. For more information go to www.P65Warnings.ca.gov.

Removing Factory Bumper



Step 1.

Open vehicles hood. Using a plastic clip removal tool or similar tool locate and remove 6 factory plastic push clips securing the plastic radiator shroud to the vehicle. Remove plastic radiator shroud from vehicle. Set plastic shroud and hardware aside for later use.

Step 2.

Using a 10mm socket locate and remove 4 factory hex head bolts securing the grille onto the vehicle. Set hardware aside for later use. Remove grille from vehicle set aside in a protected area. Set hardware aside for later use.



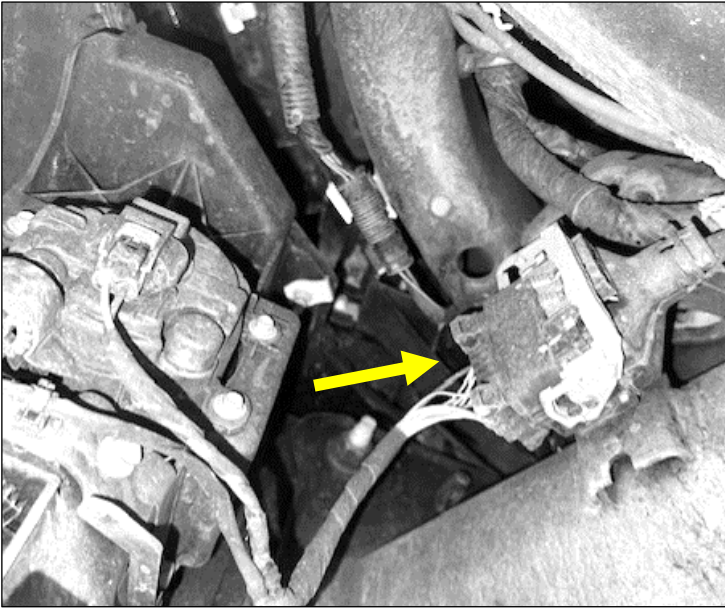
Step 3.

Proceed to the inside of the vehicle wheel well. Using a 7mm socket locate and remove one factory hex head bolt holding the bumper cap onto vehicle. Set hardware aside for reinstallation.

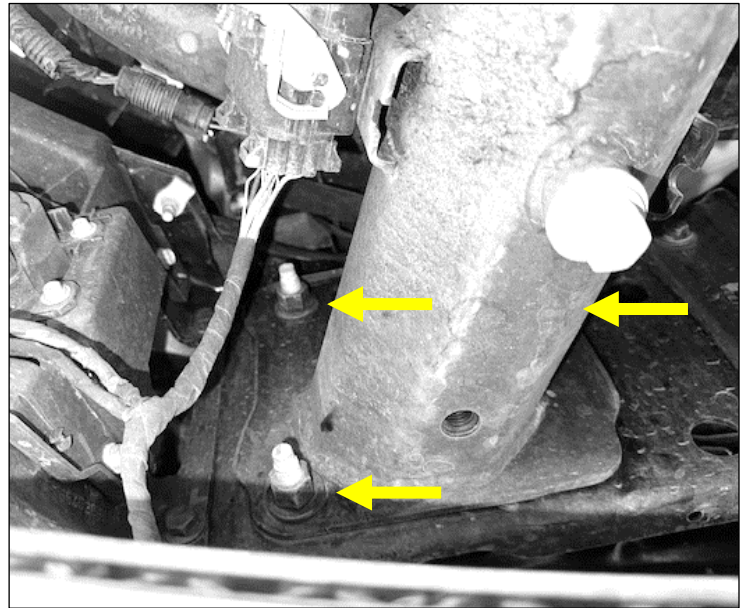
Step 4.

Pull back the inner liner to allow access behind the bumper cap. Using a 10mm socket remove bolt holding the bumper cap onto the vehicle. Set aside for later use. Repeat step for other side. Remove bumper cap from vehicle.

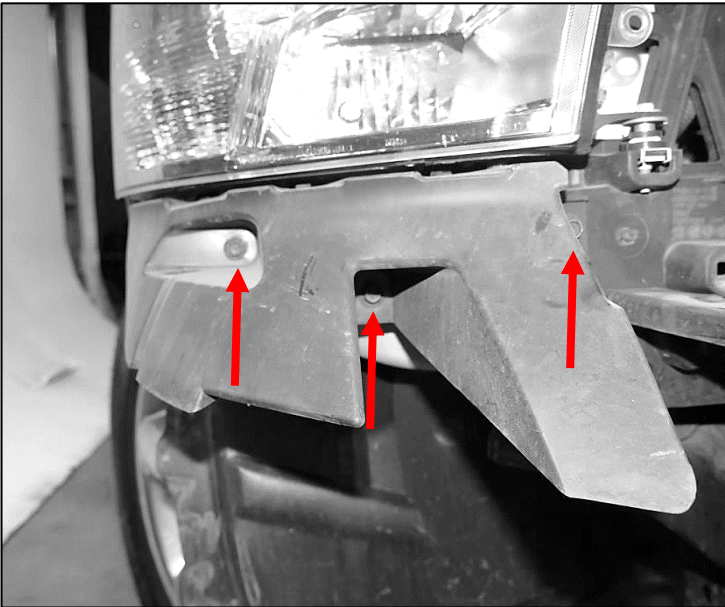
Removing Factory Bumper continued



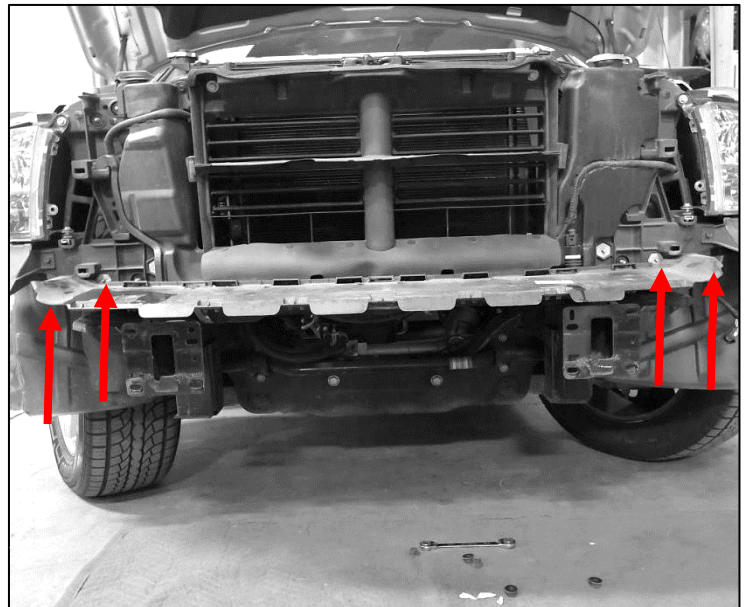
Step 5.
Working underneath the vehicle disconnect the factory harness from the bumper.



Step 6.
Using a 15mm socket remove 3 factory bolts holding bumper onto the vehicle. Repeat step for other side. With help from assistant

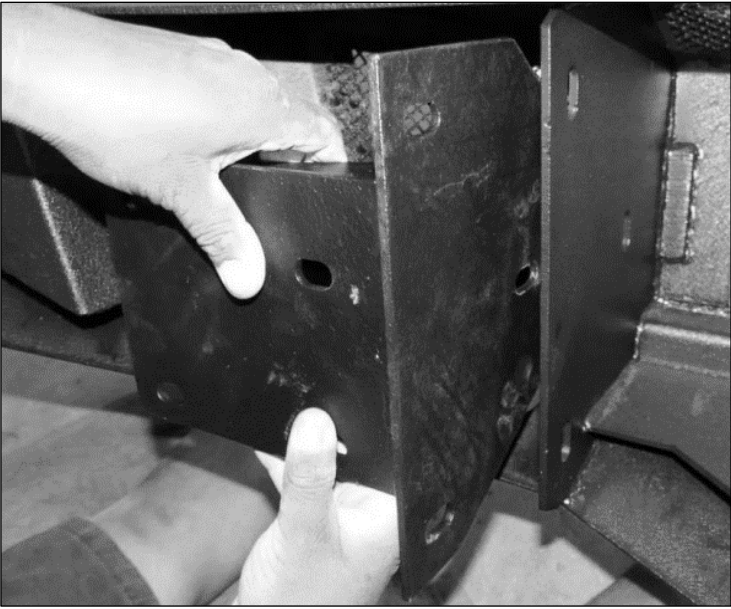


Step 7.
Using a 10mm socket locate and remove 3 factory bolts holding the plastic bumper cap support under the vehicle head light. Remove support bracket and set aside.



Step 8.
Using a 10mm socket locate and remove 4 factory bolts holding the center support onto the vehicle. Remove center plastic and set aside.

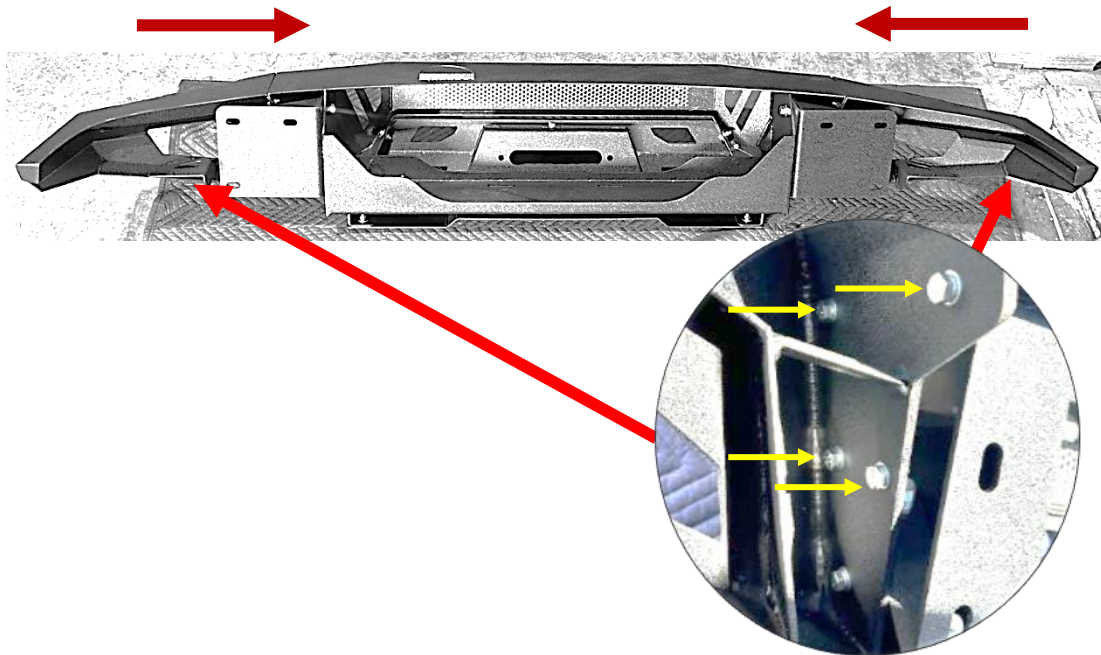
Installing Front Bumper



Step 1.
Place supplied mounting bracket onto the bumper as shown. Line up the holes in the bracket with the holes in the bumper. Hold into position.

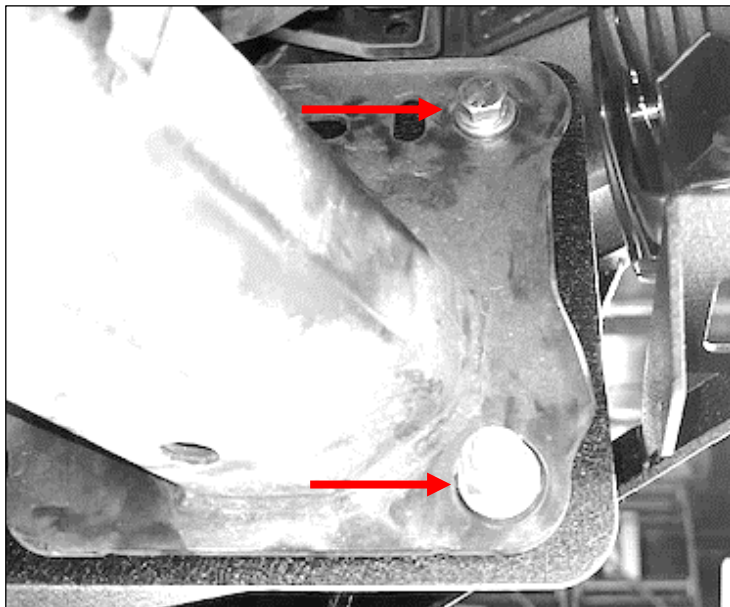


Step 2.
Secure mounting brackets onto the bumper using supplied M12 bolt, M12 washers, and M12 hex head nuts. Hand tighten at this time. Repeat step for remaining bolts. Repeat step for other side mounting bracket.



Step 3.
Place your new bumper on a padded work bench to protect the finish. Locate the supplied bumper side wings. Place the side wings onto the bumper. Line up the holes in the bumper wings with the bumper side bolts. Hold in place. Locate ten M8x1.25 hex head bolt, install bolts through the side wing onto the center bumper. Tighten down hardware using a 13mm wrench. Repeat step for remaining bumper wing. At this time install the winch onto the bumper.

Installing Front Bumper continued



Step 4.
With help from assistance place bumper onto the vehicle. Secure bumper onto vehicle using the supplied M12 nut plat, M12 bolts, M12 washer, & M12 hex head nuts. Repeat step for other side.



Step 5.
Adjust bumper until satisfied with fitment. With all the hardware installed tighten down using a 18mm socket and 18mm wrench. This completes the installation.