



EXTREME HD MODULAR GRILLE GUARD

(2019-2023 1500 - Excluding Vehicles with Proximity Sensors)
[EXCLUDING ECODIESEL, TRX, REBEL, & CLASSIC]

INSTALLATION INSTRUCTIONS

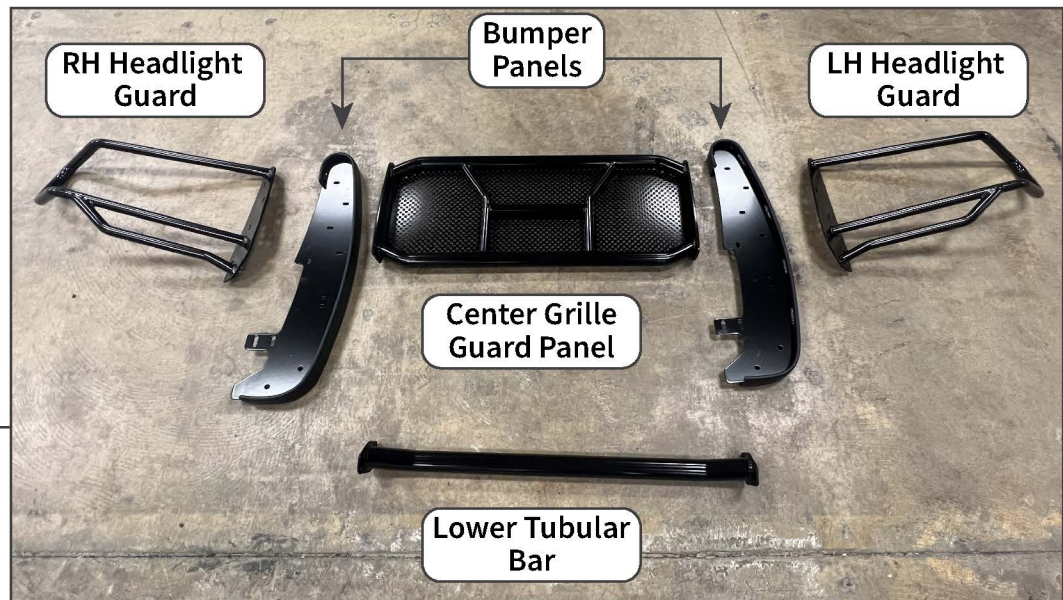
CONTENTS

- (1) LH Headlight Guard Panel
- (1) RH Headlight Guard Panel
- (1) LH Bumper Panel
- (1) RH Bumper Panel
- (1) Center Grille Guard Panel
- (1) Lower Tubular Bar
- (1) LH Lower Mounting Bracket
- (1) RH Lower Mounting Bracket
- (1) LH Upper Mounting Bracket (Inner)
- (1) RH Upper Mounting Bracket (Inner)
- (1) LH Upper Mounting Bracket (Outer)
- (1) RH Upper Mounting Bracket (Outer)
- (2) Stud Spacers/Washers (5.5mm)
- (2) M14 x 2.0 x 35mm Bolts
- (2) M14 Lock Washers
- (2) M14 Flat Washers
- (4) M12 x 1.75 x 25mm Bolts
- (4) M12 Lock Washers
- (8) M12 Flat Washers
- (4) M12 Nuts
- (14) M8 x 1.25 x 35mm Bolts
- (4) M8 x 1.25 x 25mm Bolts
- (6) M8 Lock Washers
- (36) M8 Flat Washers
- (12) M8 Lock Nuts
- (6) M8 Nuts
- (1) 4mm Allen Key

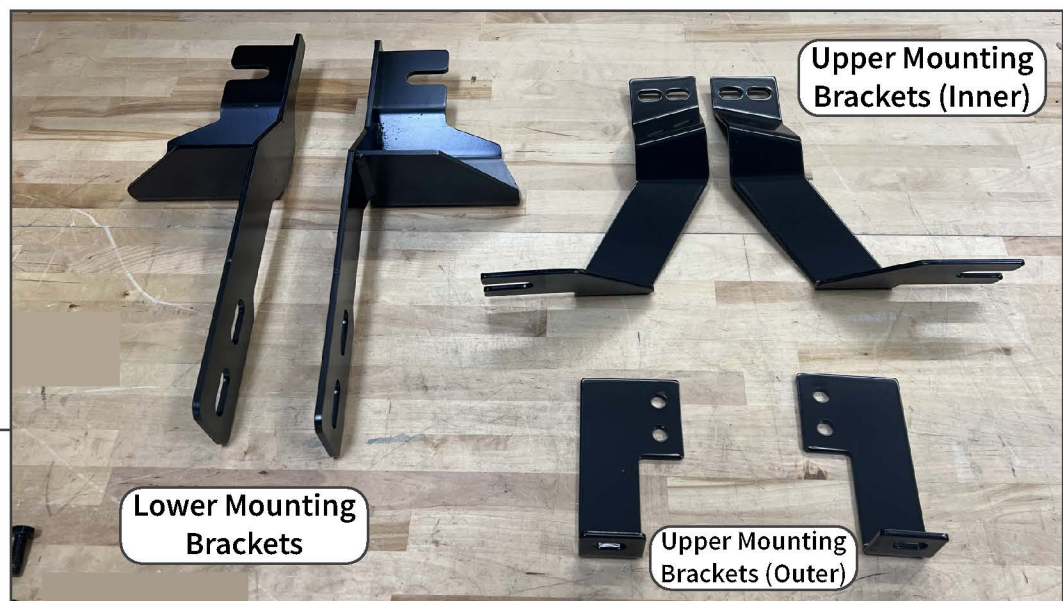
TOOLS REQUIRED

- 13mm, 18mm, 21mm Sockets
- Ratchet
- Floor Jack
- Jack Stands
- Panel Removal Tool

SKU # R174165
Edited: 05/13/2024

STEP 1

Lay out and identify all grille guard components on a soft workable surface.

STEP 2

Lay out and identify all grille guard mounting brackets and hardware on a workable surface.

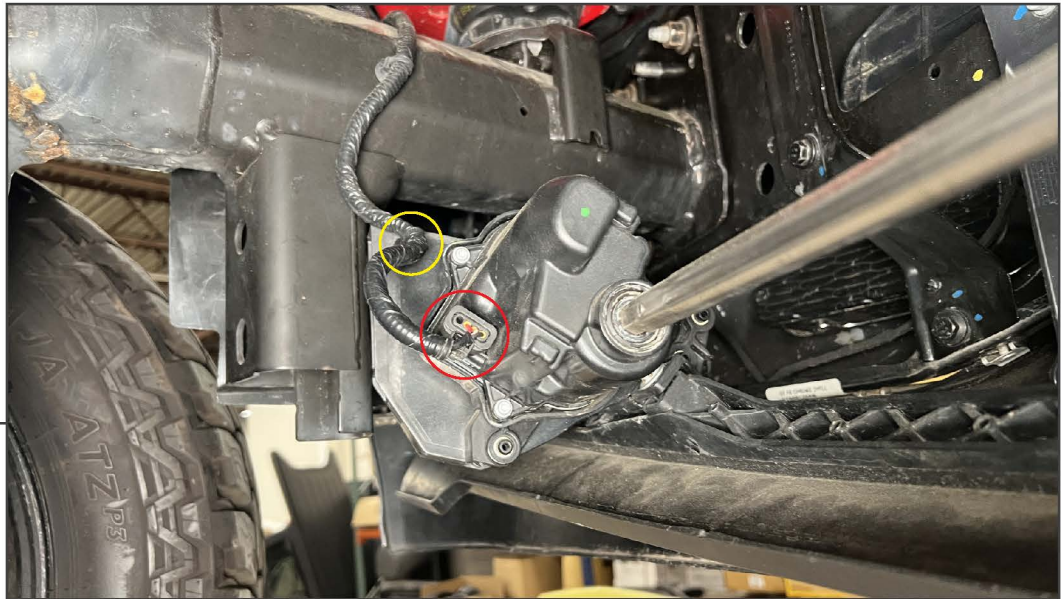
STEP 3

Fit the center grille guard panel in between the LH and RH bumper panels. Then, align each headlight guard to the center grille guard panel and the bumper panels. Once aligned, loosely secure the panels together using (8) M8 x 35mm bolts, (16) M8 flat washers, and (8) M8 lock nuts.

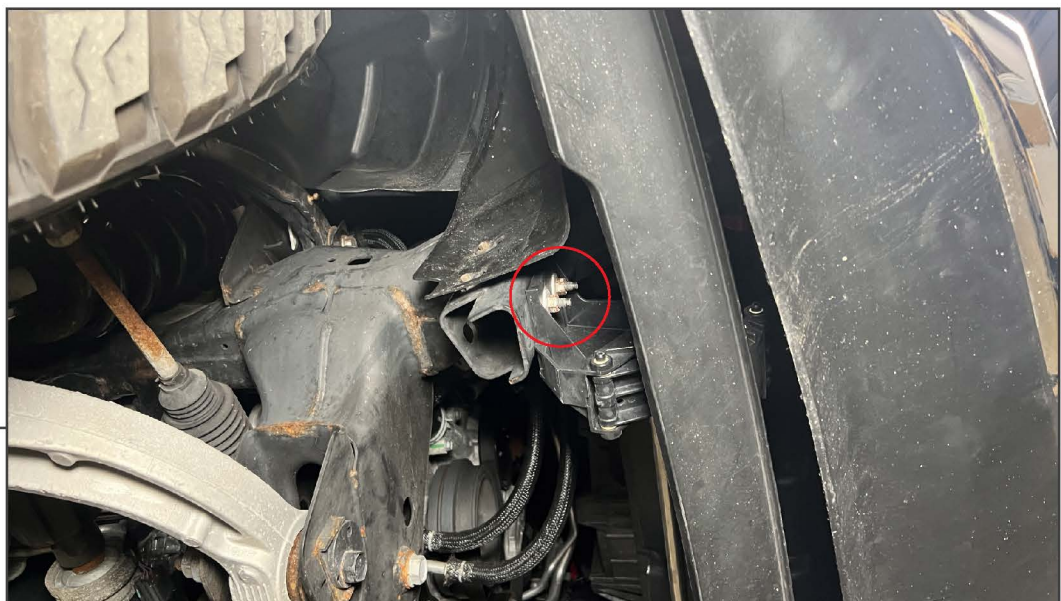
STEP 4

Loosely secure the center support tube to the LH and RH bumper panels using (4) M8 x 25mm bolts, (8) M8 flat washers, and (4) M8 lock nuts.

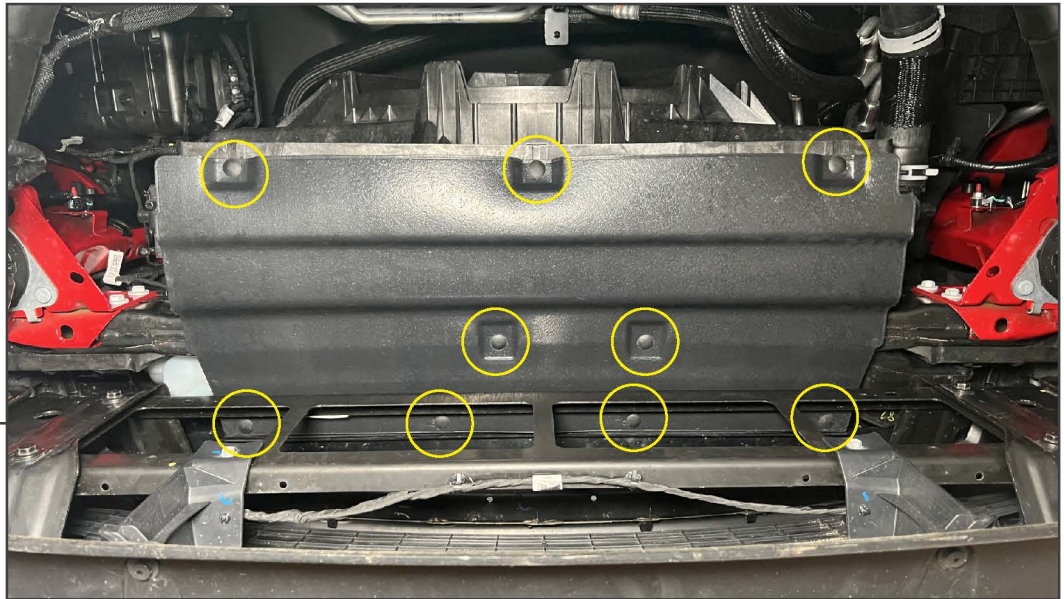
Tighten all grille guard hardware assembly hardware.

STEP 5

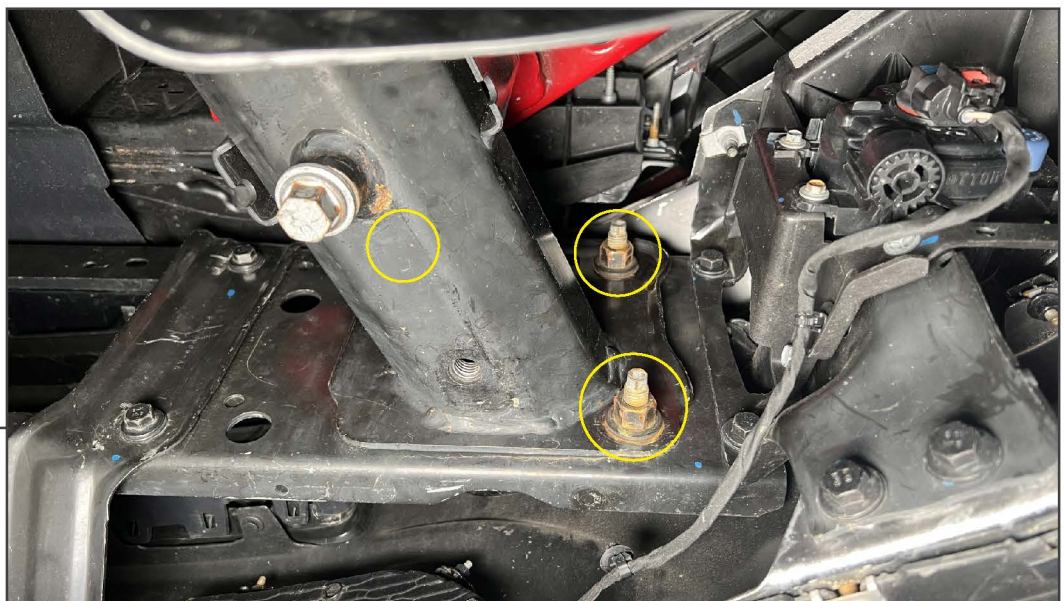
Safely lift and support the front of the vehicle off the ground. Locate the vehicle active shutter. Unplug the electrical connector from the motor. Then, use a panel removal tool to remove the harness retaining clip from the motor assembly.

STEP 6

Locate the active shutter mounting points. Remove (2) 13mm nuts from each side of the shutter assembly, and remove the assembly from the vehicle.

STEP 7

Remove (9) plastic push clips from the splash shield below the vehicle radiator assembly. Remove the splash shield from the vehicle.

STEP 8

Loosen, but do not remove the (3) 18mm nuts securing the bumper to the frame.

Repeat this step for the opposite side of the bumper. This will allow the bumper to lower slightly to allow a mounting bracket installation gap between the bumper and grille.

STEP 9

Fit the LH and RH upper mounting brackets (inner) through the gap between the bumper and grille. Begin at the center of the bumper, the brackets can be moved horizontally once in between the bumper and grille. Ensure the bracket appears similar to the diagram above.

Note: The brackets are a more difficult fit. Take your time routing the brackets into place.

STEP 10

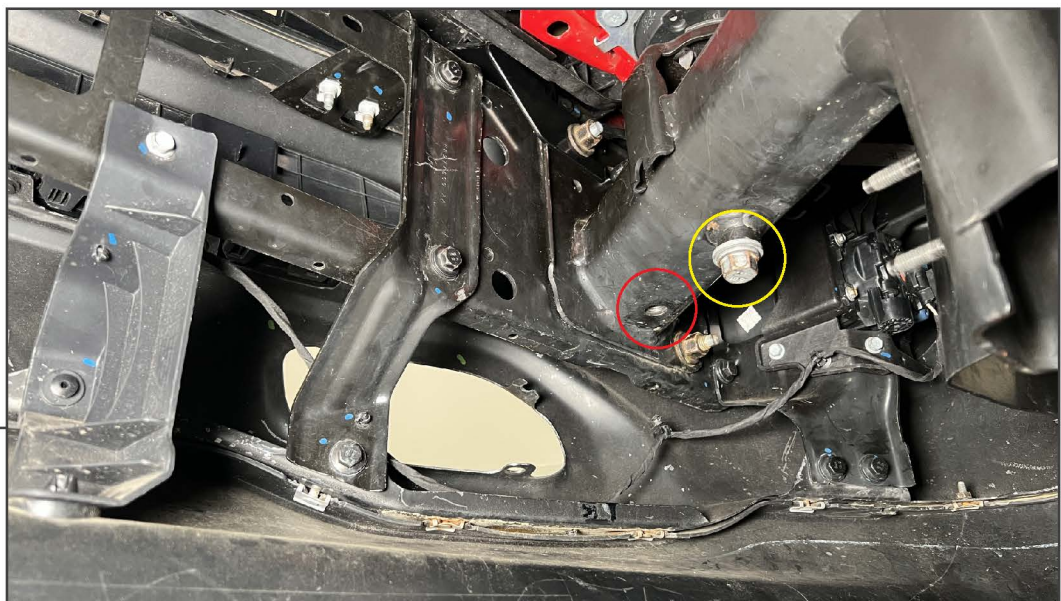
Remove the outer OEM 18mm nut from the bumper. Then, place (1) 5.5mm spacer onto the bumper stud. Move the bracket towards the vehicle bumper mounting pad and fit the slotted portion over the vehicle bumper stud. Secure the bracket into place using the original 18mm nut.

Repeat this step for the opposite side mounting bracket.

STEP 11

Vehicles without OEM Tow Hooks: Remove (2) 10mm nuts from the top of the cover panel. Remove the (2) studs from the cover. Hinge the cover downwards through the front of the bumper

Vehicles with OEM Tow Hooks: Unbolt and remove the tow hooks from the vehicle.

STEP 12

Loosen the (1) 18mm bolt in the vehicle frame. Locate the threaded M14 x 2.0 bolt hole in the vehicle frame.

STEP 13

Fit the lower mounting bracket to the vehicle bolt. Secure the lower mounting bracket using (1) M14 x 35mm bolt, (1) M14 lock washer, and (1) M14 flat washer. Then, tighten the vehicle 18mm bolt.

Repeat this step for the opposite side mounting bracket.

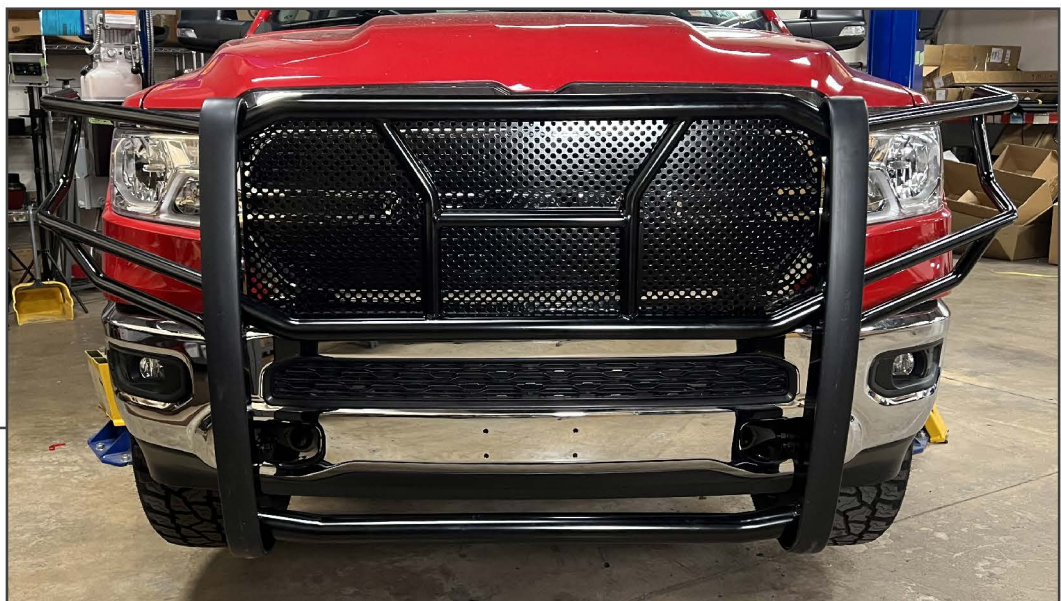
STEP 14

Fit the upper outer mounting bracket to the previously mounted inner mounting bracket using (2) M8 x 25mm bolts, (2) M8 lock washers, (4) M8 flat washers, and (4) M8 nuts.

Repeat this step for the opposite side mounting bracket.

STEP 15

With assistance, fit the grille guard to the previously installed mounting brackets. Secure the bottom of the grille guard to the lower brackets using (4) M12 x 35mm bolts, (4) M12 lock washers, (8) M12 flat washers, and (4) M12 nuts. Then, secure the top of the grille guard to the upper brackets using (2) M8 x 35mm bolts, (2) M8 lock washers, (4) M8 flat washers, and (2) M8 nuts.

STEP 16

Adjust the grille guard to best fit the vehicle. Once properly adjusted, tighten all hardware evenly until secure. Re-install the radiator splash shield and the active shutter assembly reusing the original hardware.

Note: The grille guard may interfere with the OEM proximity sensors functionality, if equipped.

Installation is now complete.