

V2 LED THIRD BRAKE LIGHT

(2009-2018 1500)

(2010-2018 2500 / 3500)

INSTALLATION INSTRUCTIONS

CONTENTS

(1) LED Third Brake Light

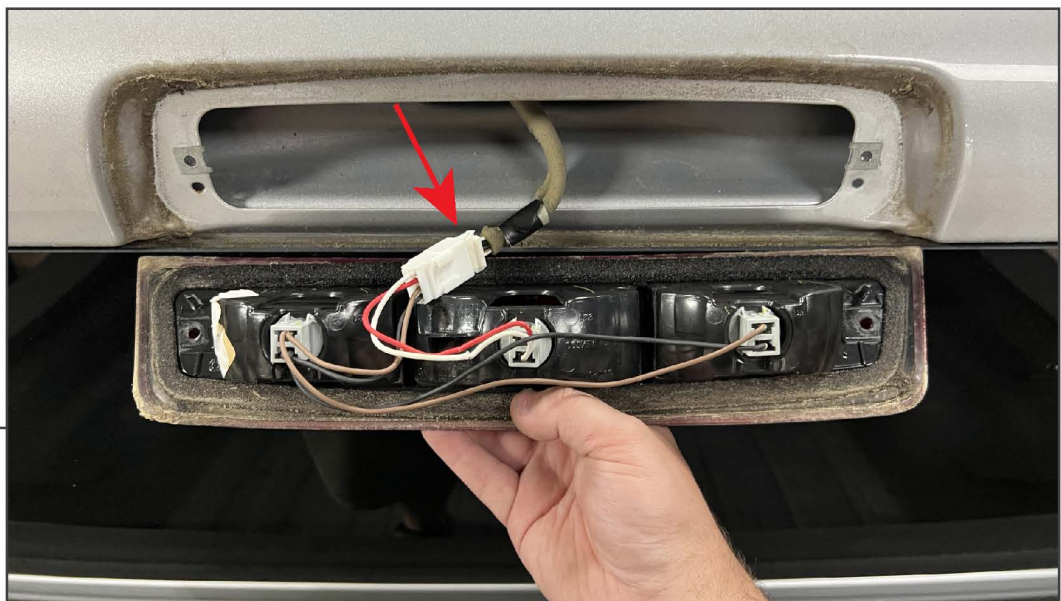
TOOLS REQUIRED

Phillips Screwdriver
Plastic Pry Tool



STEP 1

Remove (2) Phillips screws from the vehicle third brake light.



STEP 2

Use a plastic pry tool to remove the brake light from the vehicle cab. Unplug the vehicle harness from the brake light.

STEP 3



Plug the new third brake light into the vehicle harness.

STEP 4



Fit the third brake light to the vehicle cab, and secure into place reusing the original (2) Phillips screws. Tighten the hardware evenly until secure.

Installation is now complete.