



# DUAL REAR EXIT EXHAUST SYSTEM

(2019-2024+ 1500)

---

## INSTALLATION INSTRUCTIONS

### CONTENTS

---

- (1) Muffler Assembly
- (1) LH Over Axle Pipe
- (1) RH Over Axle Pipe
- (1) LH Tail Pipe
- (2) Exhaust Tips w/ Clamps
- (3) 2.5" Exhaust Clamps

### TOOLS REQUIRED

---

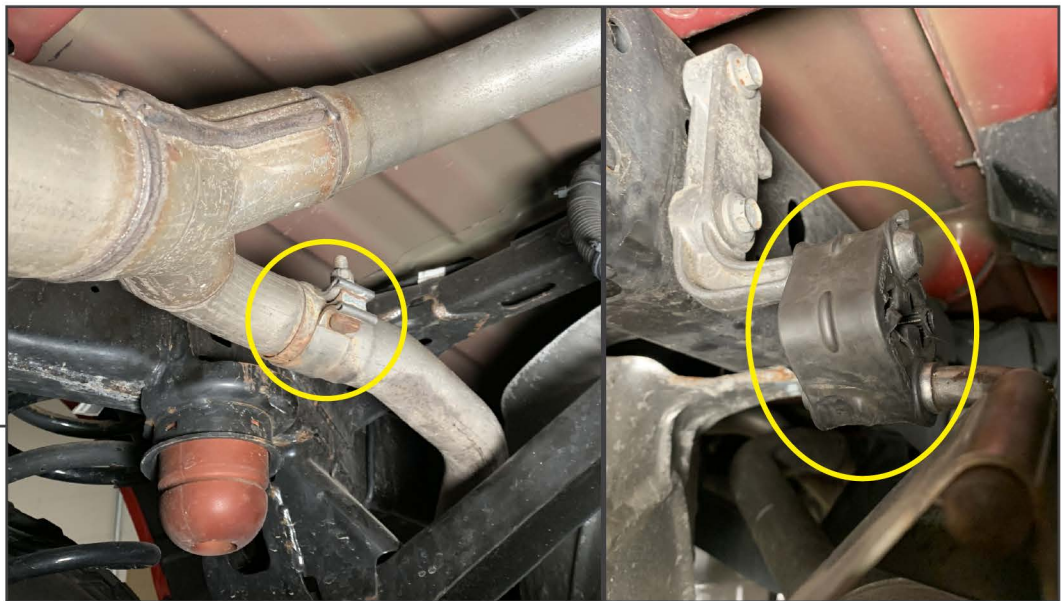
- 13mm, 15mm, 16mm Sockets
- Ratchet
- Spray Lubricant
- Floor Jack
- Jack Stands
- Pry Bar

## STEP 1



Lift and support the vehicle using a floor jack and jack stands. Locate and remove the (2) exhaust tip pipes from the exhaust by loosening the exhaust clamps.

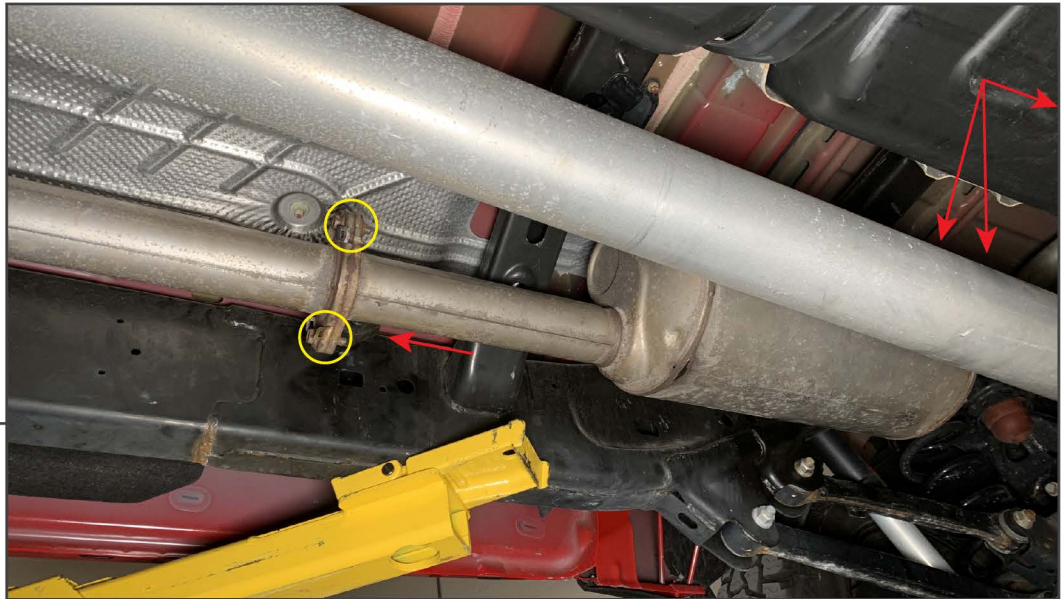
## STEP 2



Above the vehicle axle, loosen (1) exhaust clamp to disconnect the RH tailpipe from the remaining exhaust components. Disconnect the rubber hanger towards the rear of the vehicle frame, and remove the RH tailpipe from the vehicle.

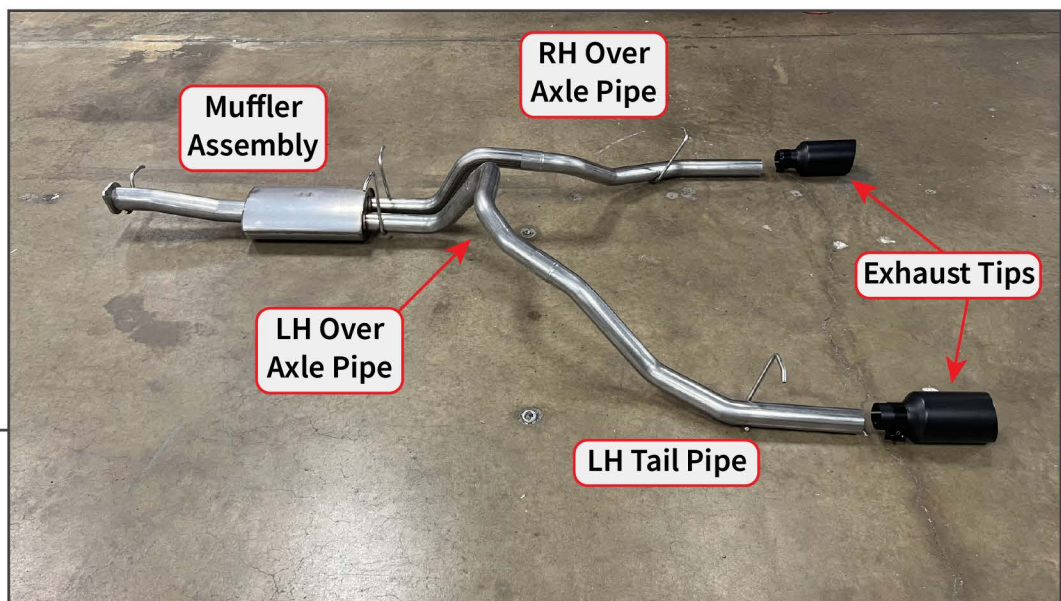


### STEP 3



Remove (2) 16mm bolts from the front muffler flange to disconnect the muffler from the front portion of the vehicle exhaust. Disconnect the (3) muffler rubber hangers, and (1) LH tailpipe rubber hanger, then remove the exhaust assembly from the vehicle.

### STEP 4



Lay out and identify all of the exhaust components.





### STEP 5

Align the muffler assembly to the vehicle exhaust system flange, and insert the (3) metal hangers into the vehicle rubber/polyurethane hangers. Thread the original (2) 16mm bolts into the flanges, but do not fully tighten to allow for later adjustment.

Place (2) 2.5" exhaust clamps on the outlet pipes of the muffler assembly.



### STEP 6

Fit the RH over axle pipe onto the muffler assembly, and fit the metal hanger into the vehicle rubber hanger. Adjust the exhaust pipe and secure the clamp so the pipe is angled towards the vehicle bumper cutout, but do not fully tighten at this time.

---

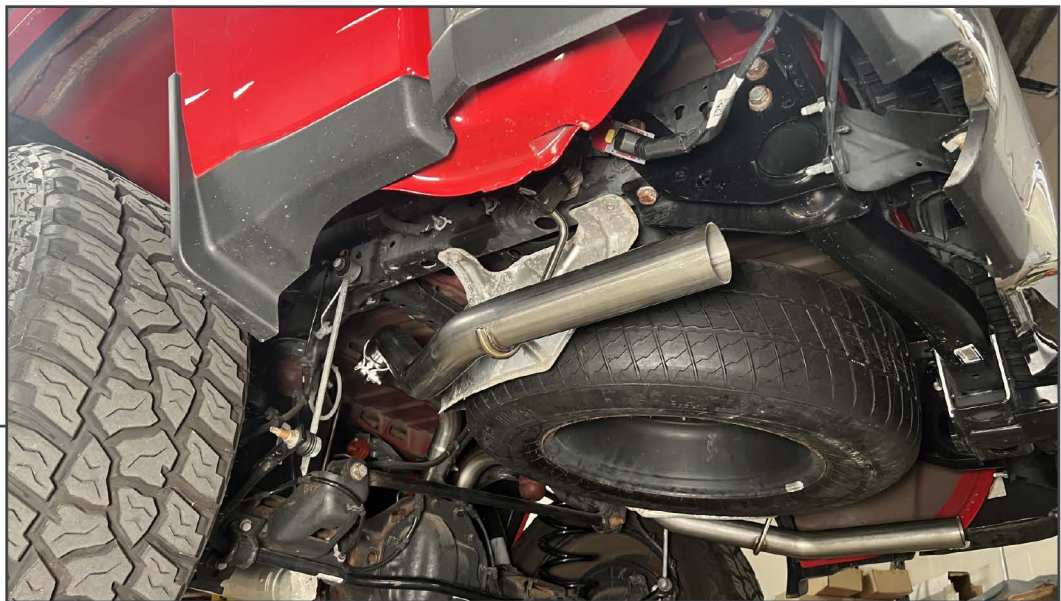
## STEP 7



Insert the LH over axle pipe into the muffler assembly, and secure but do not fully tighten the exhaust clamp to secure the pipe into place.

---

## STEP 8



Fit the LH tail pipe onto the LH over axle pipe, and fit the metal hanger into the vehicle rubber hanger. Adjust the exhaust pipe and secure the clamp so the pipe is angled towards the vehicle bumper cutout, but do not fully tighten at this time.





---

## STEP 9



Fit the (2) exhaust tips to the exhaust system. Adjust the exhaust system to best fit the bumper cutouts, and tighten each exhaust clamp to 45 ft. lbs.

Note: If the RH over axle pipe interferes with the frame above the axle, use a pry bar to move the exhaust system towards the center of the vehicle. The muffler polyurethane hangers allow the exhaust to be moved and will retain the position.

---

## STEP 10



Installation is now complete.