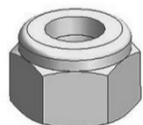
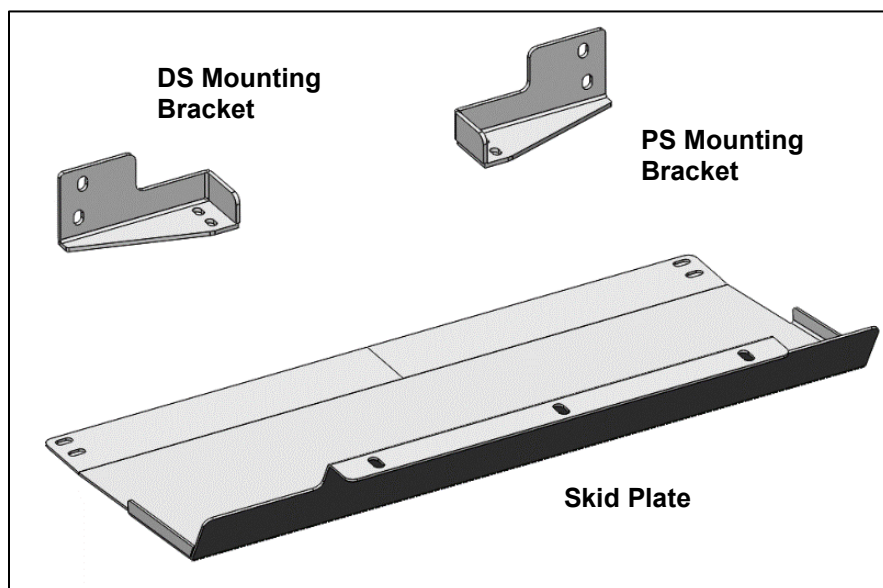


## Installation Instructions

### PARTS

Qty	Item Description
1	Skid plate
1	DS/Left Mounting Bracket
1	RS/Right Mounting Bracket
3	10mm x 25mm Button Head Bolts
3	10mm x 30mm x 2.5mm Flat Washers
3	10mm Lock Washers
4	8mm x 25mm Hex Combo Bolts
8	8mm x 24mm x 2mm Flat Washers
4	8mm Hex Nuts
4	8mm Nylon Lock Nuts
1	Allen Wrench S=6



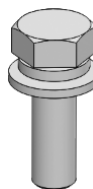
Lock  
Nut



Lock  
Washer



Flat  
Washer



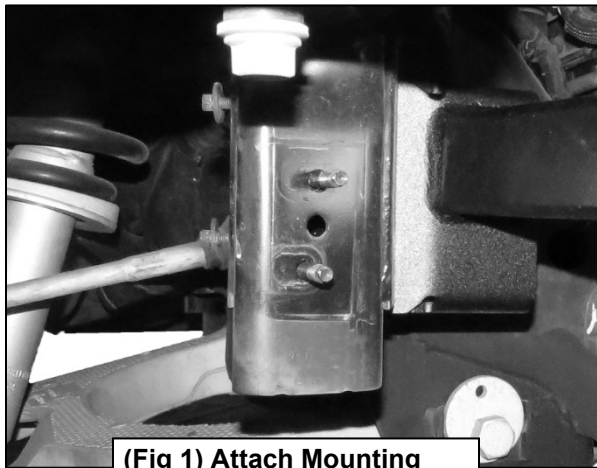
Combo  
Bolt



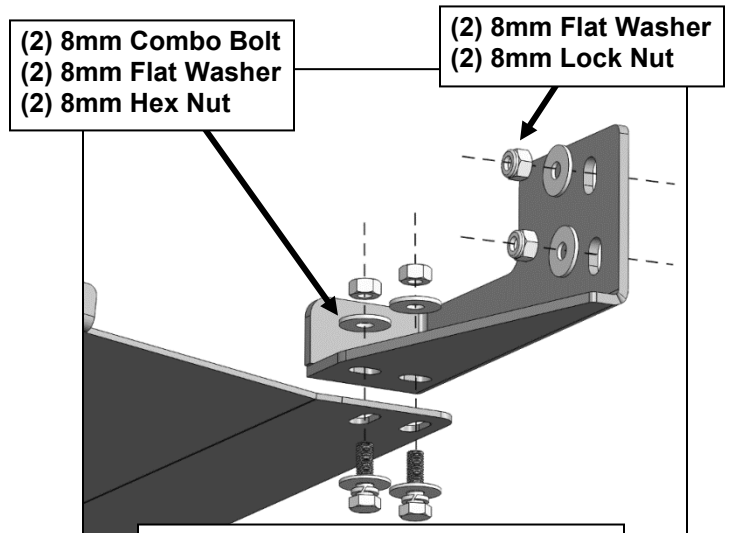
Button  
Head Bolt

**1**

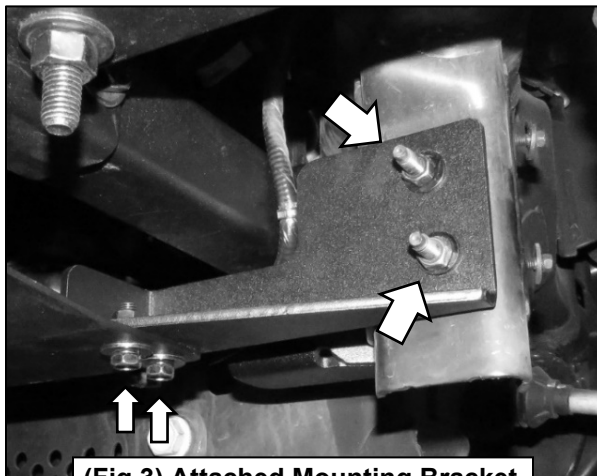
Follow (Fig 1 – 5) to attach Support Bracket and Skid Plate. Ensure fasteners are only hand tight at this point.



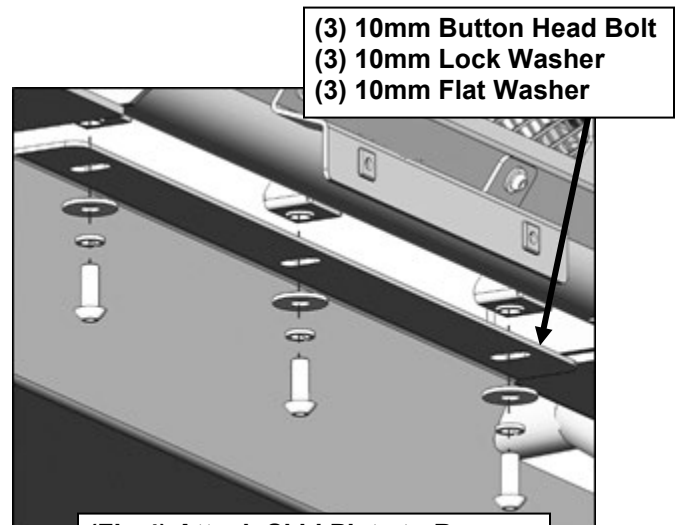
**(Fig 1) Attach Mounting Bracket to Mounting Studs**



**(Fig 2) Attach Mounting Bracket to Vehicle using factory hardware, then Skid Plate to Mounting Bracket**



**(Fig 3) Attached Mounting Bracket**



**(Fig 4) Attach Skid Plate to Bumper**



**(Fig 5) Attached Skid Plate**

**2**

Ensure Skid Plate is level, then tighten all fasteners completely. At this point, installation is complete. Do periodic inspections of the installation to make sure that all hardware is secure and tight.

