



HD MODULAR FRONT BUMPER WITH LED LIGHTS

(2013-2018 1500 - EXCLUDING REBEL)

INSTALLATION INSTRUCTIONS

CONTENTS

(1) Front Bumper	(4) M10x1.50 x 30mm Hex Bolts
(1) LH Bumper Upper Panel	(4) M10 Lock Washers
(1) RH Bumper Upper Panel	(4) M10 Flat Washers
(1) LH Bumper End Cap	(2) M8x1.25 x 25mm Hex Bolts
(1) RH Bumper End Cap	(Optional Light Bar)
(1) LH LED Light Enclosure	(2) M8x1.25 x 16mm Hex Bolts
(1) RH LED Light Enclosure	(Optional Light Bar)
(1) Center Mesh Panel	(4) M8 Lock Washers
(2) LH/RH Mesh Panels	(6) M8 Flat Washers
(1) License Plate Bracket	(2) M8 Nuts
(2) License Plate Screw Retainers	(20) M6x1.00 x 20mm Combo Allen Bolts
(1) LH Light Bar "L" Bracket	(2) M6x1.00 x 20mm Allen Bolts
(1) RH Light Bar "L" Bracket	(10) M6 Flat Washers
(1) LED Lights w/ Brackets & Harness Kit	(16) M6 Flange Nuts
(6) M12x1.75 x 35mm Hex Bolts	(2) M6 Lock Nuts
(6) M12 Lock Washers	(1) 4mm Allen Key
(12) M12 Flat Washers	(4) Plastic Bolt Holders
(6) M12 Nuts	(10) Cable Ties

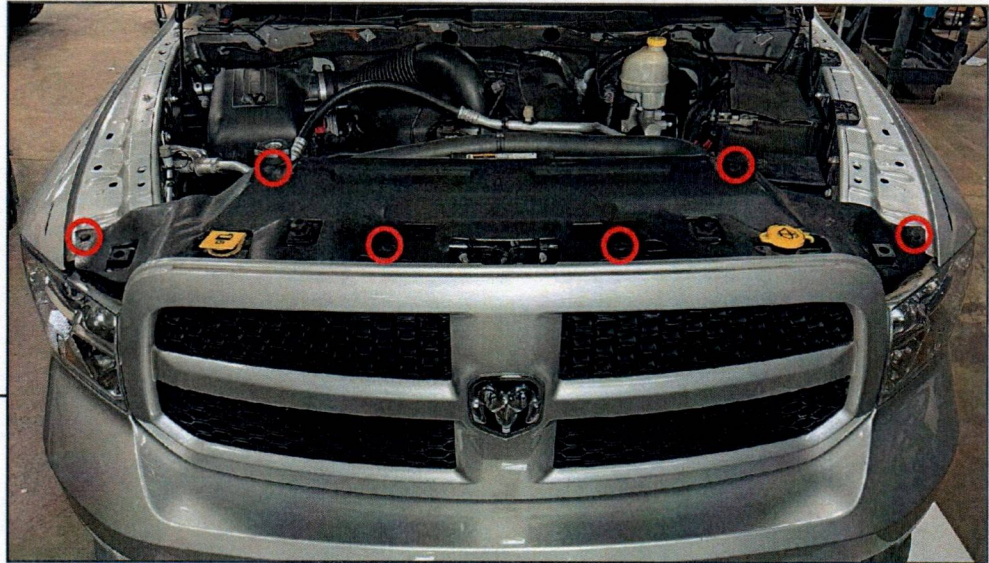
TOOLS REQUIRED

10, 13, 15, 16, 21mm Socket/Wrench
Ratchet
Panel Removal Tool
3mm, 4mm Allen Key (Provided)

SKU # R196007

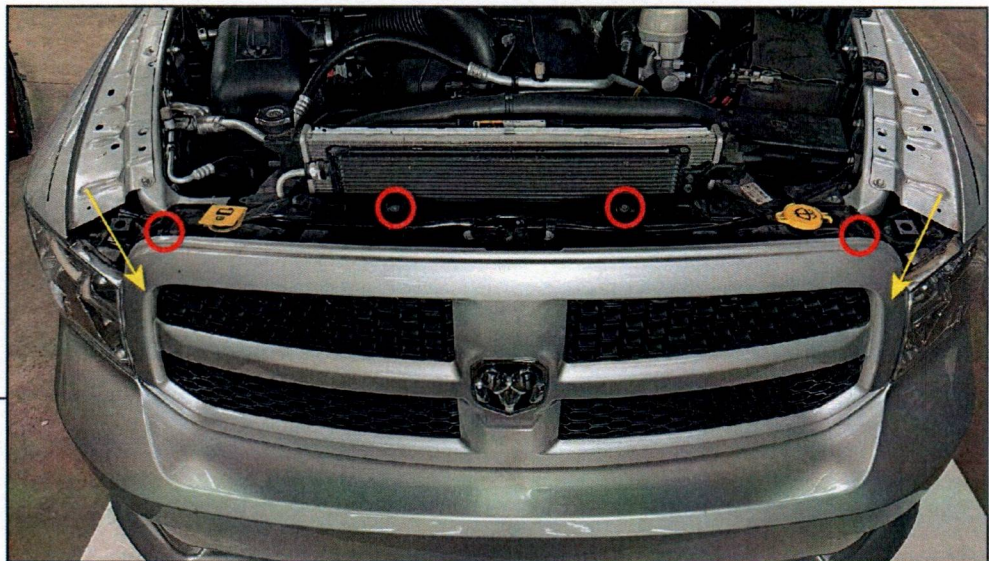
BARRICADE

STEP 1



Open the vehicle hood. Remove (6) plastic push clips from the radiator cover, and remove the cover from the vehicle and set aside.

STEP 2

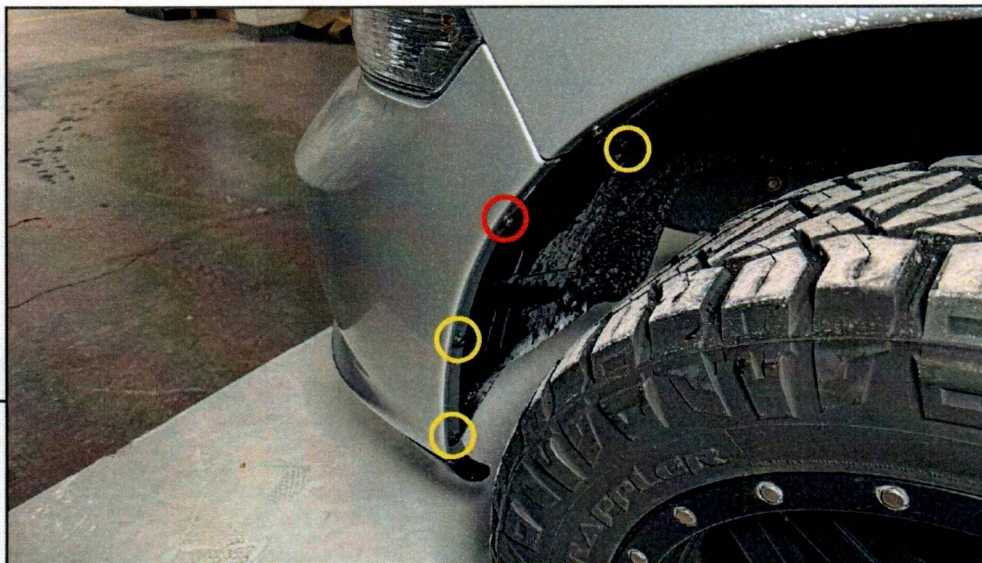


Remove (4) 10mm screws from the top of the vehicle grille assembly. Then, locate the (2) grille retaining clips securing the grille to the radiator support. Using a flathead screwdriver between the radiator support and the grille, pry the grille clip to release the clip from the radiator support.

Remove the grille from the vehicle and set aside.

BARRICADE

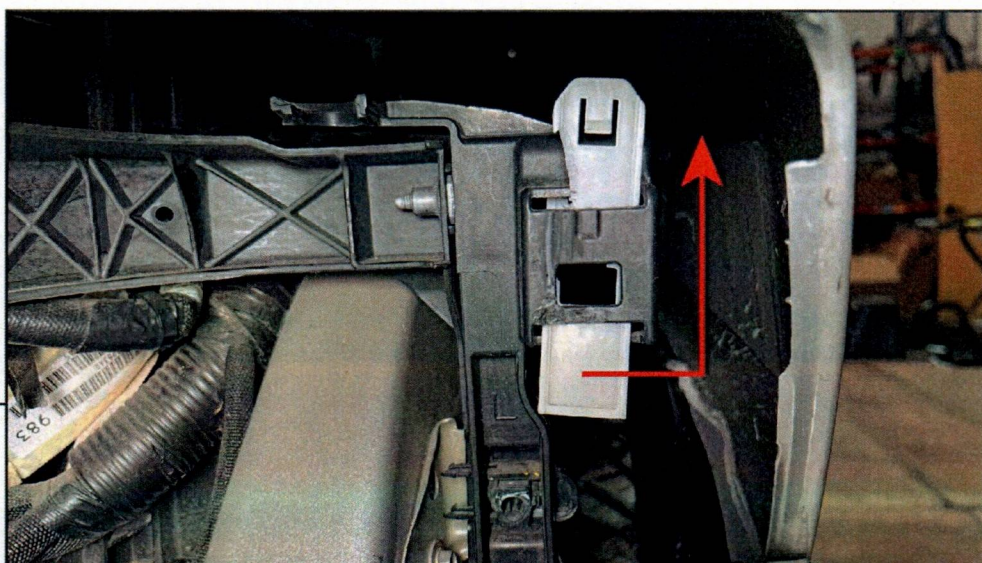
STEP 3



Remove (1) 7mm screw and (2) plastic push clips from the edge of the bumper cover. Then, remove (1) plastic push clip from the headlight access flap in the fender liner.

Repeat this step on the opposite side of the vehicle.

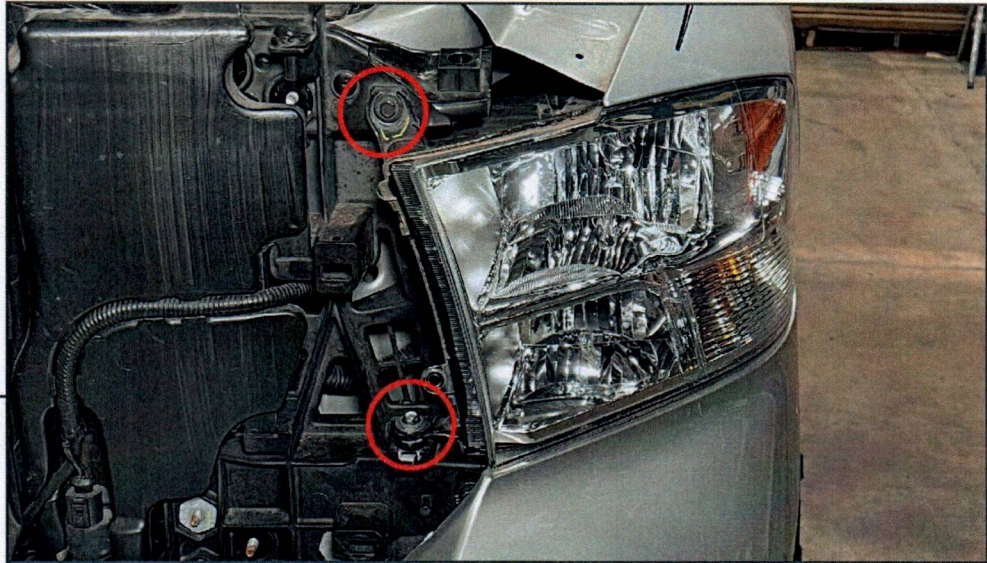
STEP 4



Through the wheel well liner flap, locate the white headlight retaining slider. Lift upwards on the slider to allow the headlight to dislodge from the rear.

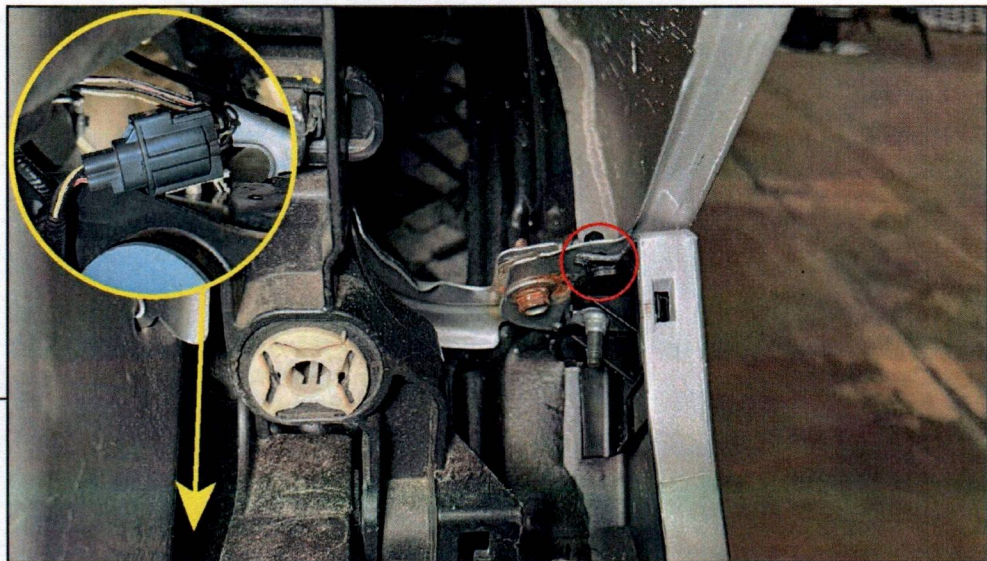
Repeat this step on the opposite side of the vehicle.

Note: The photo above shows this mechanism with the headlight assembly removed for demonstration purpose.

STEP 5

Remove (2) 10mm bolts from the front of the headlight assembly. Pull the headlight assembly away and unplug the various electrical connectors.

Repeat this step on the opposite side of the vehicle.

STEP 6

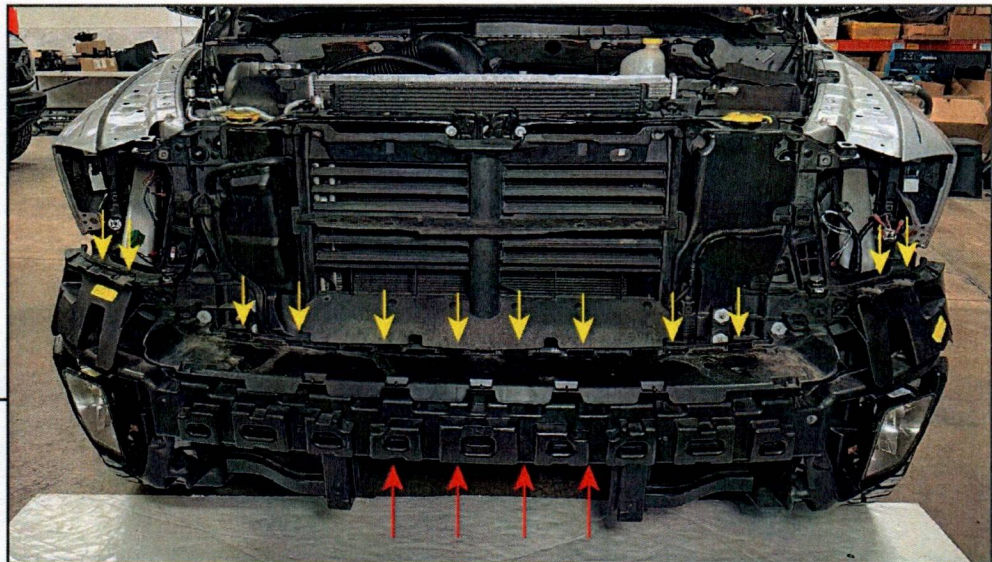
Remove (1) 10mm bolt connecting the front bumper to the fender.

Repeat this step on the opposite side of the vehicle.

Above the driver's side fog light assembly, unplug the fog light harness connector from the chassis harness.

BARRICADE

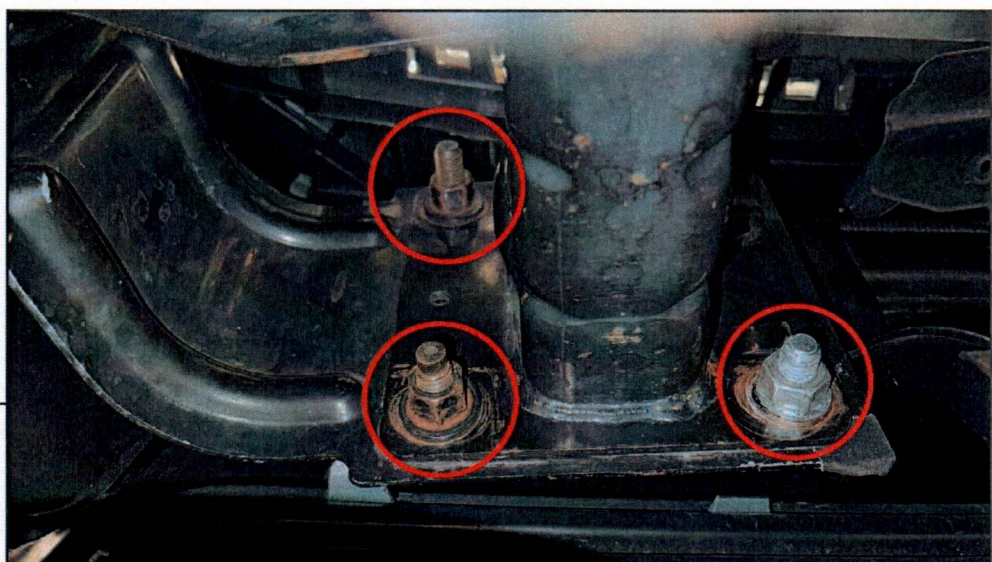
STEP 7



Locate and remove (4) plastic push pins securing the bottom splash shield to the bottom of the bumper cover. Then, begin to pull the bumper cover away from the vehicle by using a flathead screwdriver to press along the upper press-in tabs along the top of the bumper cover.

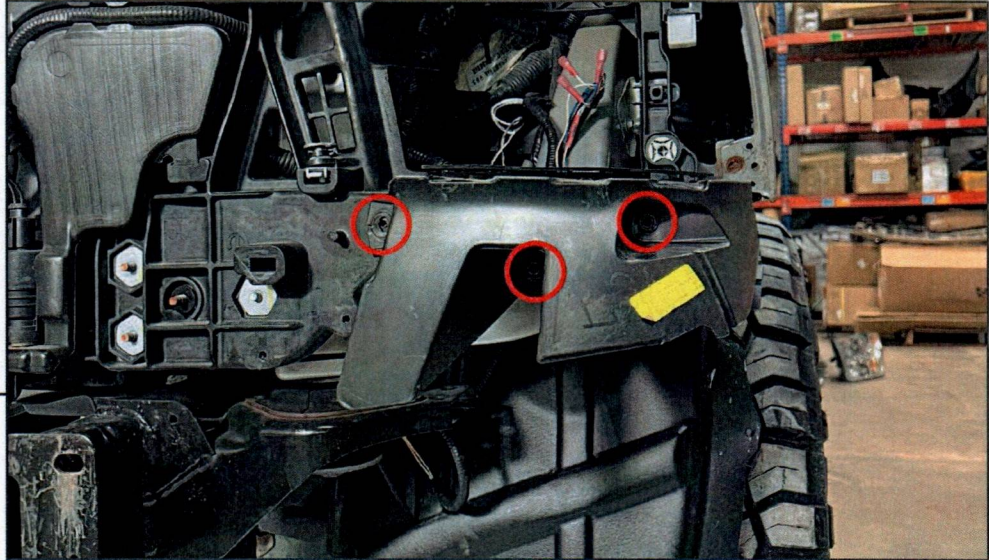
Remove the bumper cover from the vehicle and set aside.

STEP 8



From under the vehicle, remove (3) 18mm nuts from each side of the bumper. With the nuts removed, firmly pull the bumper away from the vehicle and set aside.

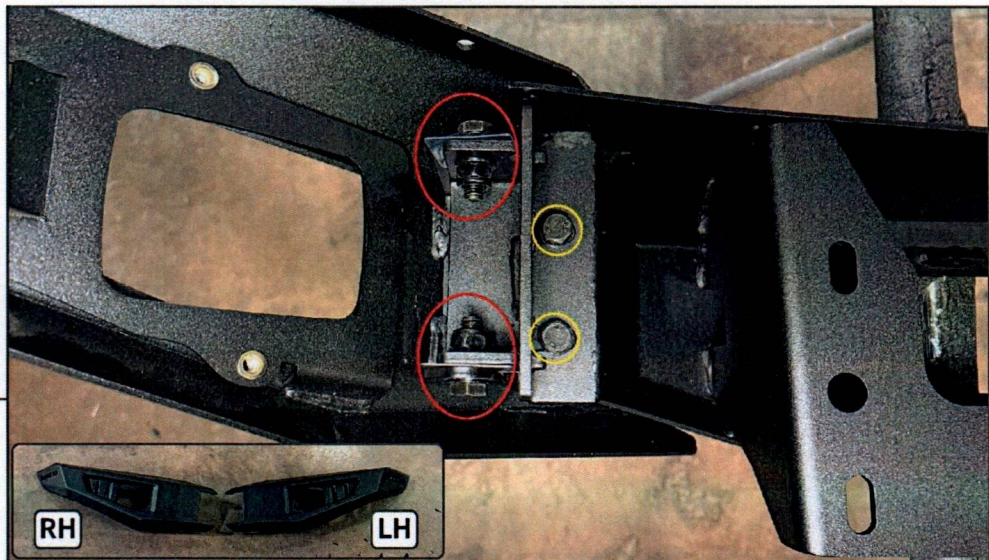
BARRICADE



STEP 9

Remove (3) 10mm screws from the bumper cover support panel under each headlight assembly. Set the panel aside.

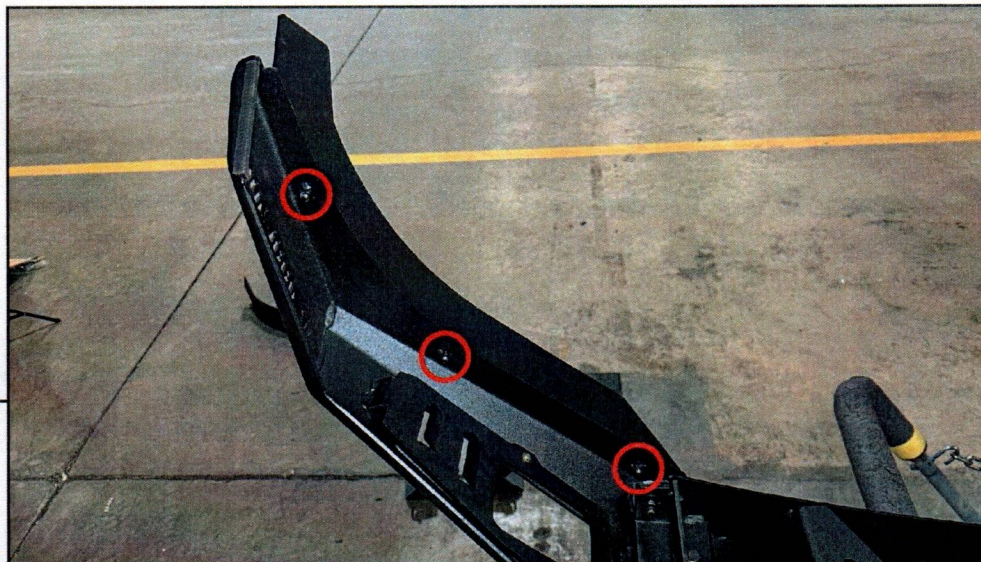
Repeat this step on the opposite side of the vehicle.



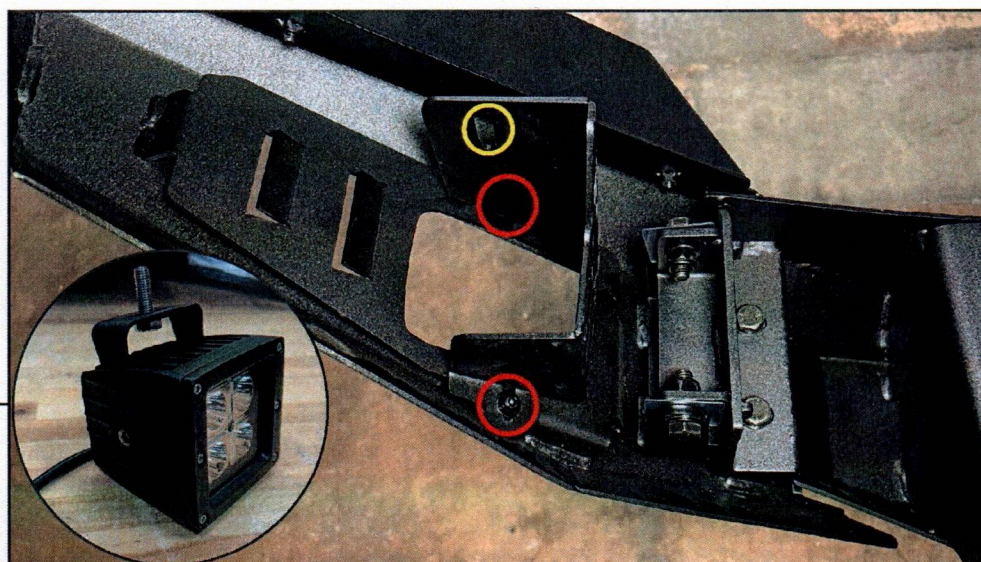
STEP 10

Place the new bumper on a workable surface for assembly. Determine the LH and RH end caps using the diagram above. When fitting the end cap, install (1) plastic bolt holder between the bumper and the end cap mounting points. Loosely secure the end cap using (2) M10 x 30mm bolts, (4) M10 flat washers, and (2) M10 lock nuts.

Secure the appropriate end cap using (4) M10 x 30mm bolts, (4) M10 lock washers, and (4) M10 flat washers.

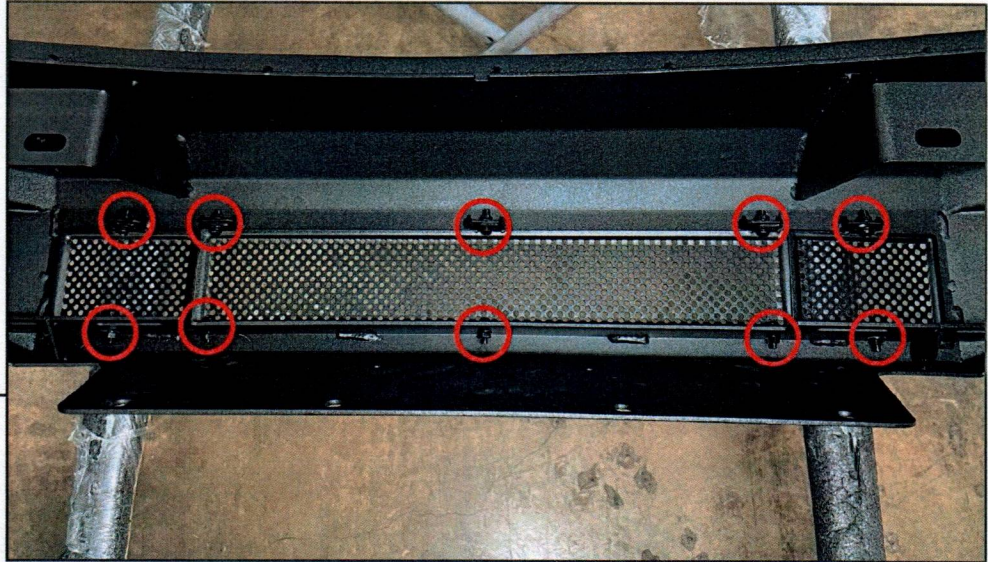
STEP 11

Fit the LH and RH upper panels to the bumper, and secure using (3) M6 combo Allen bolts, (3) M6 flat washers, and (3) M6 flange nuts. Do not fully tighten the bolts to allow for adjustment after the bumper is installed to the vehicle.

STEP 12

Secure the LED light enclosures to the bumper using (2) M6 combo Allen bolt per enclosure into the pre-installed threaded inserts in the bumper.

Assemble the LED light brackets to the LED lights using (2) M6 x 12mm cap Allen bolts and (2) M6 lock washers. Then, secure the included LED lights to each enclosure using (1) M8 x 30mm hex bolt, (1) M8 lock washer, (1) M8 flat washer, and (1) M8 nut included in the lighting kit.

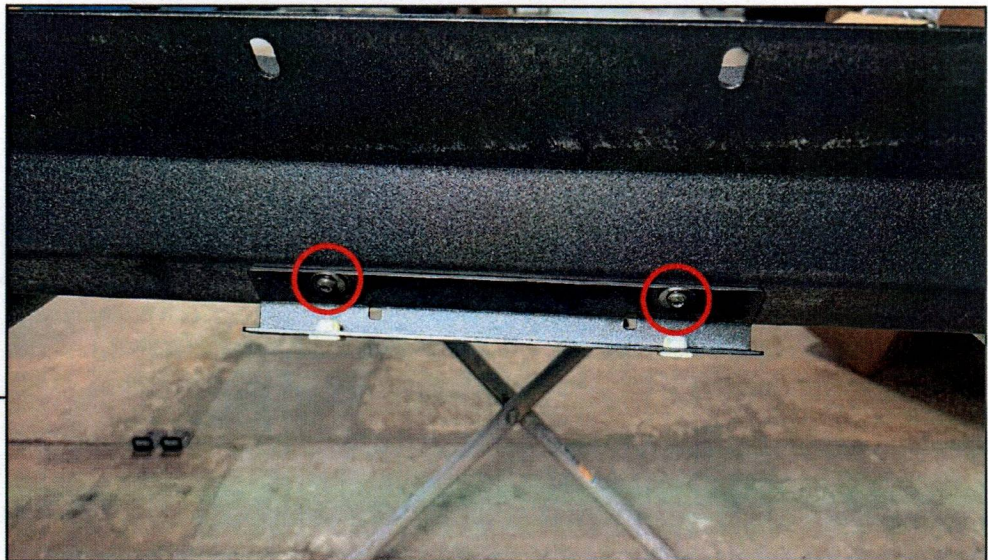
STEP 13

Secure the LH, RH, and Center mesh panels to the bumper using (10) M6 x 20mm combo Allen bolts and (10) M6 flange nuts.

Note: Installing a light bar can be used instead of the grille panels using the included M8 hardware and "L" brackets. Light bar sold separately.

"L" Brackets: (2) M8 x 25mm Bolts, (2) M8 Lock Washers, (4) M8 Flat Washers, (2) M8 Nuts

Light Bar to "L" Brackets: (2) M8 x 16mm Bolts, (2) M8 Lock Washers, (2) M8 Flat Washers

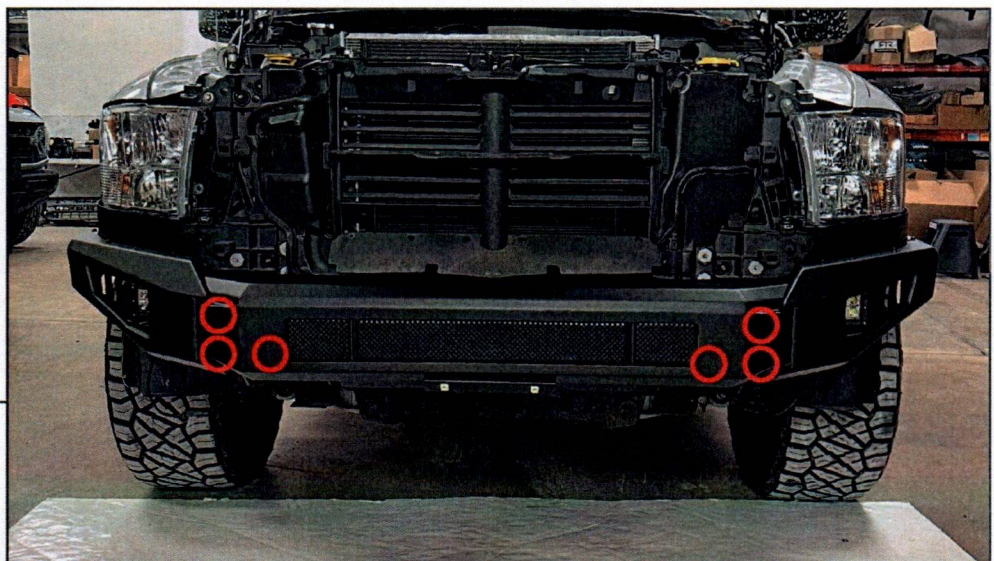
STEP 14

If desired, secure the front license plate mounting bracket to the bottom of the bumper using (2) M6 x 20mm Allen bolts, (4) M6 flat washers, and (2) M6 lock nuts. Then, fit the (2) square plastic screw retainers into the square holes in the bracket.

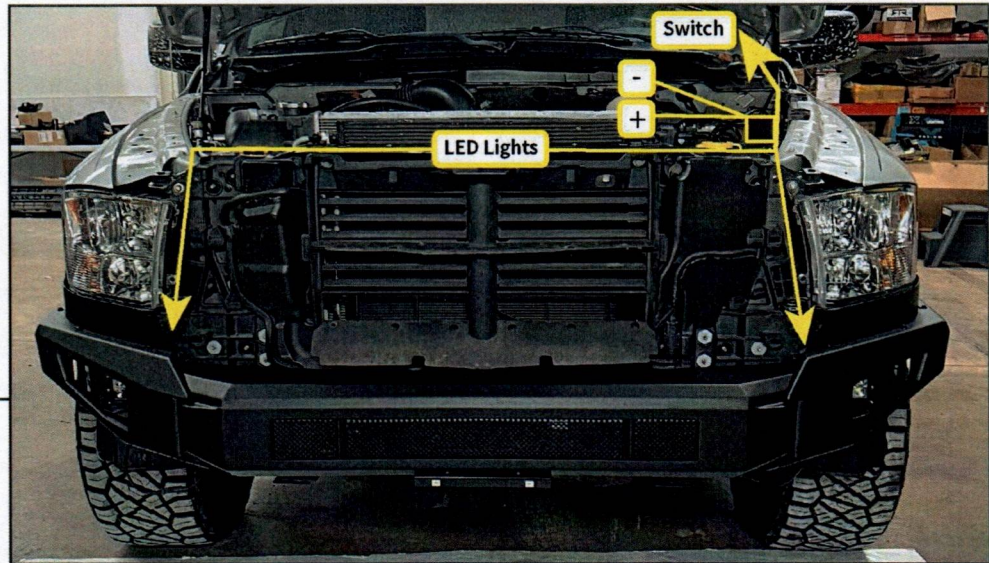
Use OEM license plate screws to secure the license plate to the bracket.

STEP 15

Install the vehicle headlights to the vehicle reusing the original hardware. Ensure the rear slider is fully engaged and all wiring harnesses are plugged in.

STEP 16

With a helper, lift the new bumper to the vehicle, and secure into place using (6) M12 x 35mm bolts, (6) M12 lock washers, (12) M12 flat washers, and (6) M12 nuts.

STEP 17

Route the included LED light wiring harness throughout the engine bay following the diagram above. Ensure to route the harness away from any hot/moving components. Use the included (10) cable ties to ensure the harness is secure. Mount the relay to a suitable location in the vehicle engine bay.

Unplug the switch connector, and set the switch aside. Route the switch connector on the main harness towards the main firewall grommet below the brake master cylinder. Carefully cut a small slit in the grommet to allow for the switch connector to route into the vehicle interior.

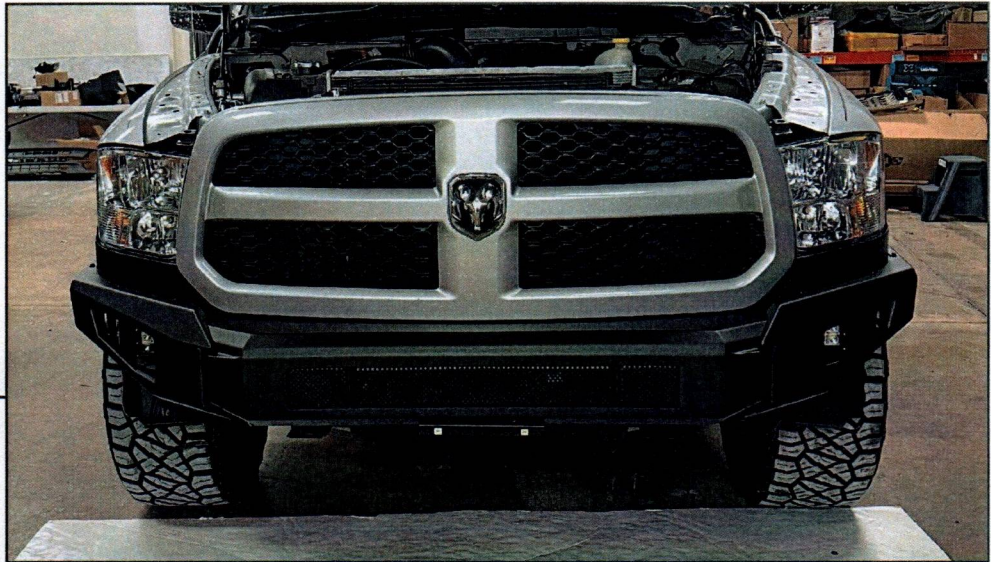
STEP 18

Using the included double sided tape attached to the switch, fit the switch to the desired position on the dashboard. Route the harness towards the vehicle firewall grommet, and plug the connectors together. Ensure the harness is secure away from the steering/pedal assemblies.

- Connect the Red ring terminal lead to battery + terminal.
- Connect the Black ring terminal lead to battery - terminal.

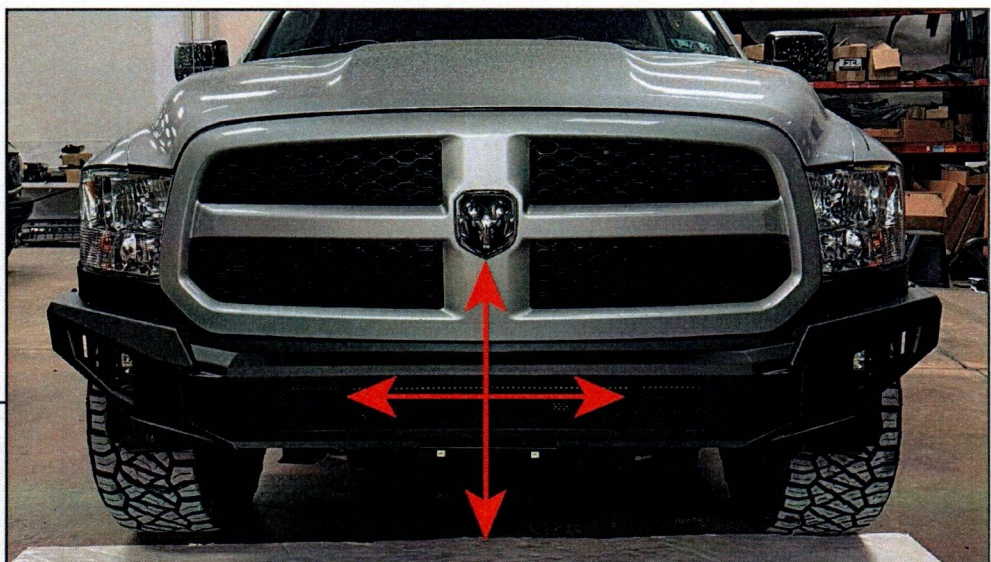
Test LED lighting at this time.

STEP 19



Fit the grille and radiator cover panel to the vehicle reusing the original hardware.

STEP 20



Adjust the bumper to best fit the vehicle, and then tighten (6) M12 bolts hardware to fully secure the bumper into place. With the bumper fully mounted, adjust the upper filler panels below the head-lights, and fully tighten the (6) Allen combo bolts to secure into place.

BARRICADE

STEP 21



Secure the wheel well liner behind the bumper, or trim the excess material on the wheel well liners and securely mount to the front of the vehicle.

STEP 22



Installation is now complete.