



INSTALLATION GUIDE

2021+ Dodge RAM TRX 1500 Valvetronic Resonator Bypass X-Pipe

FS.DODGE.TRX.VXP



Difficulty



Specialty Tools Required

- Sawzall with fresh metal blade or chain style pipe cutter
- 15mm socket with ratchet or wrench

CAUTION

- Always allow car to cool before performing any installation(s) or service(s) on it.
- Always disconnect negative battery terminal before beginning service.
- Always be sure to work on an even and level surface when raising vehicle(s) with a jack and support all raised vehicles with locked jack stands once elevated.
- Fabspeed Motorsport recommends that all installations be supervised or verified by a trained professional technician.
- Fabspeed Motorsport is not responsible for any personal injury or damage(s) sustained to a vehicle during installation of aftermarket performance parts.



1. Locate the stock resonator section.



2. Mark 1-13/16" of an inch after the resonator with tape or a marker as shown for a cut line.



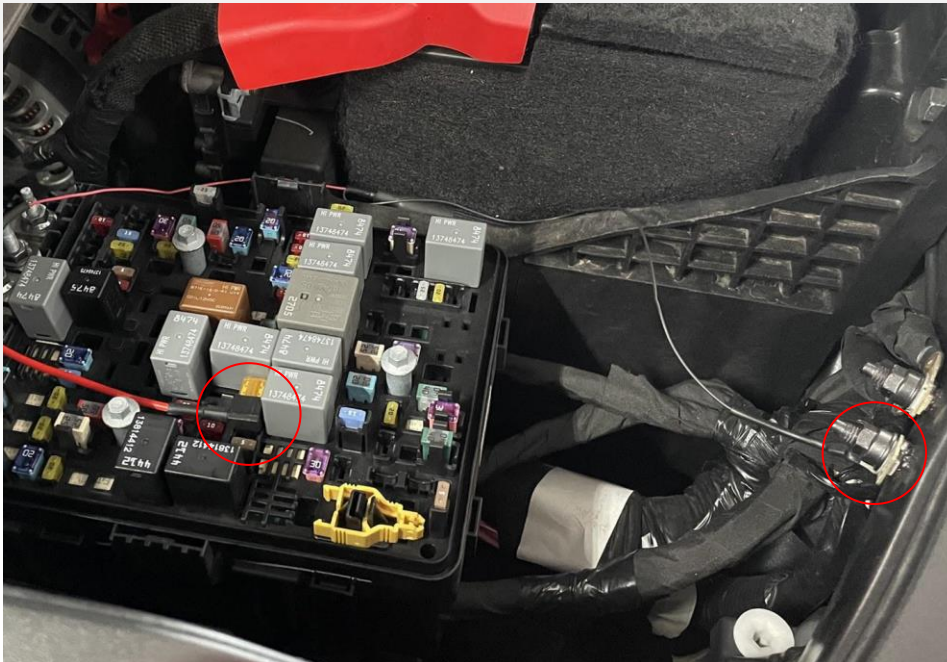
3. Cut stock exhaust at cut line.
4. Marking 1-1/4" from the end of each pipe with a marker will help to center Torca clamps.



5. Slide Torca clamps on Fabspeed exhaust.
6. Install exhaust centering clamps in between marks to ensure proper engagement of clamps.
7. Tighten clamps.



8. Now to begin routing the controller harness. Use the marked locations as your power and ground. Open the fusebox and remove fuse 38. Insert the fuse into the opening on the harness, and plug the harness into the fusebox itself. There are 2 chassis grounds located directly to the right.

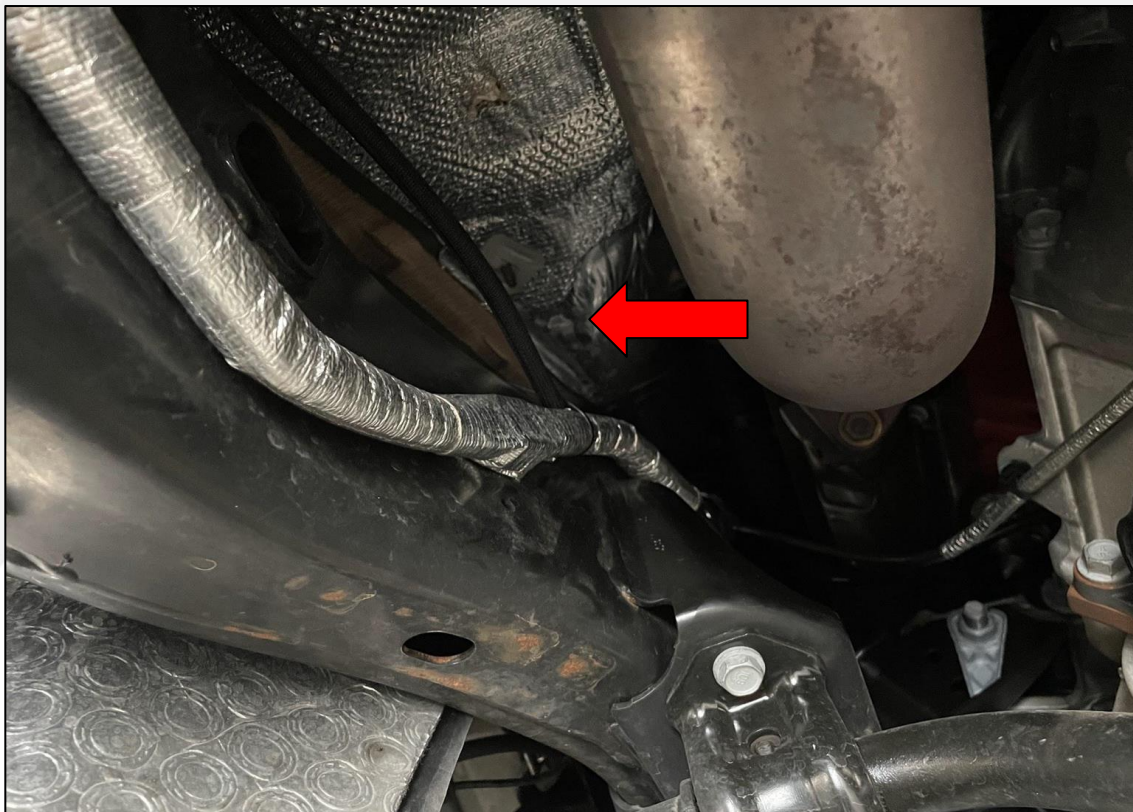




9. Run the harness along the battery and secure the controller module to the shown location

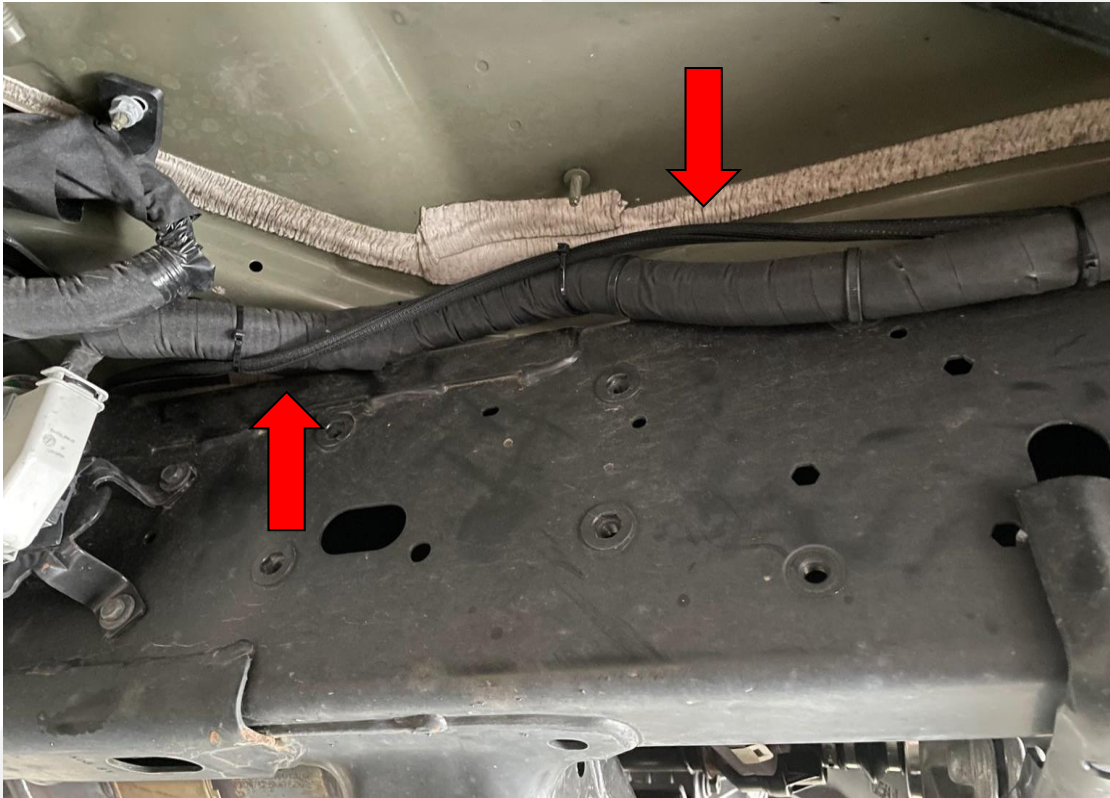


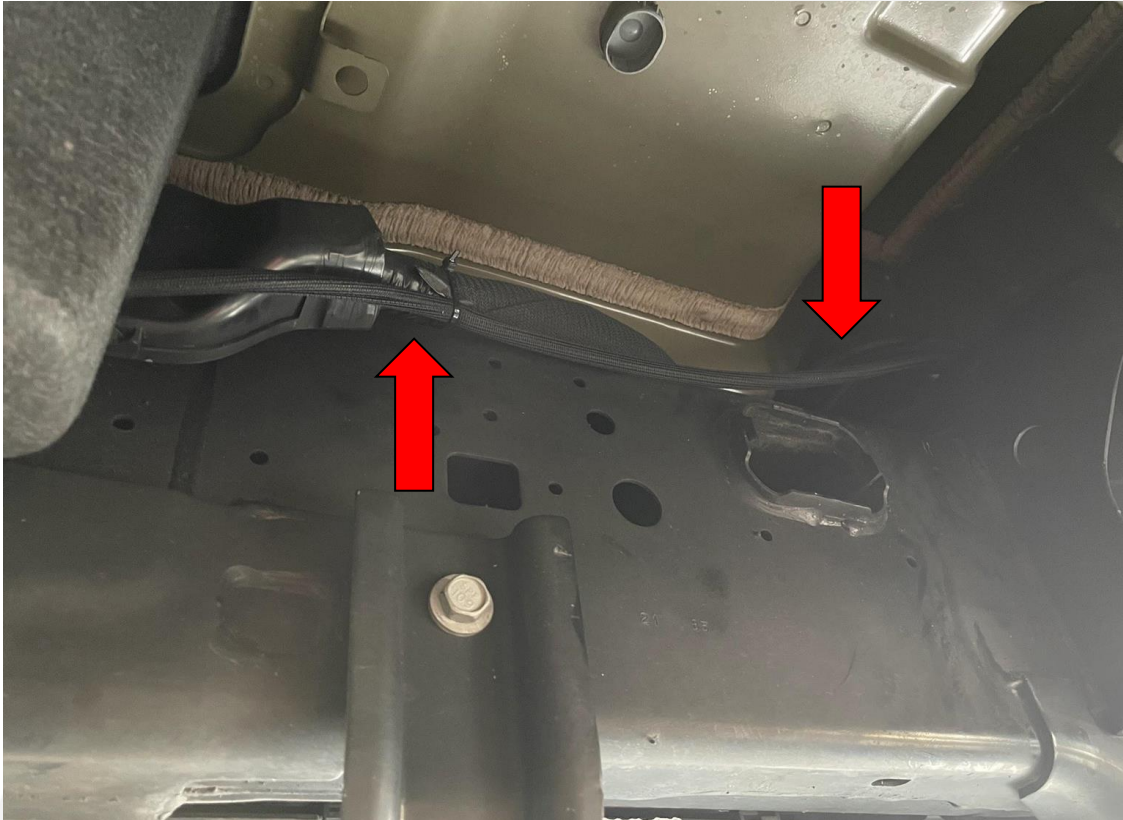
10. Continue running the wiring down the driver's side of the engine bay, to the top of the frame rail.



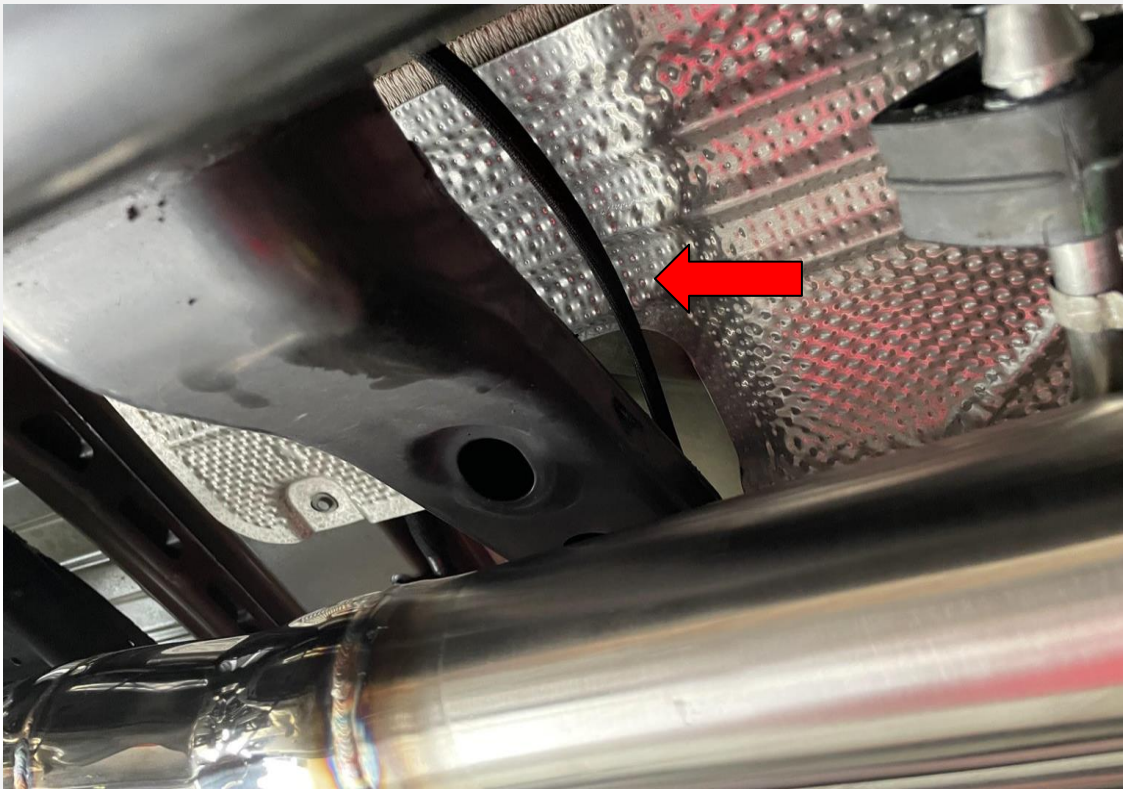


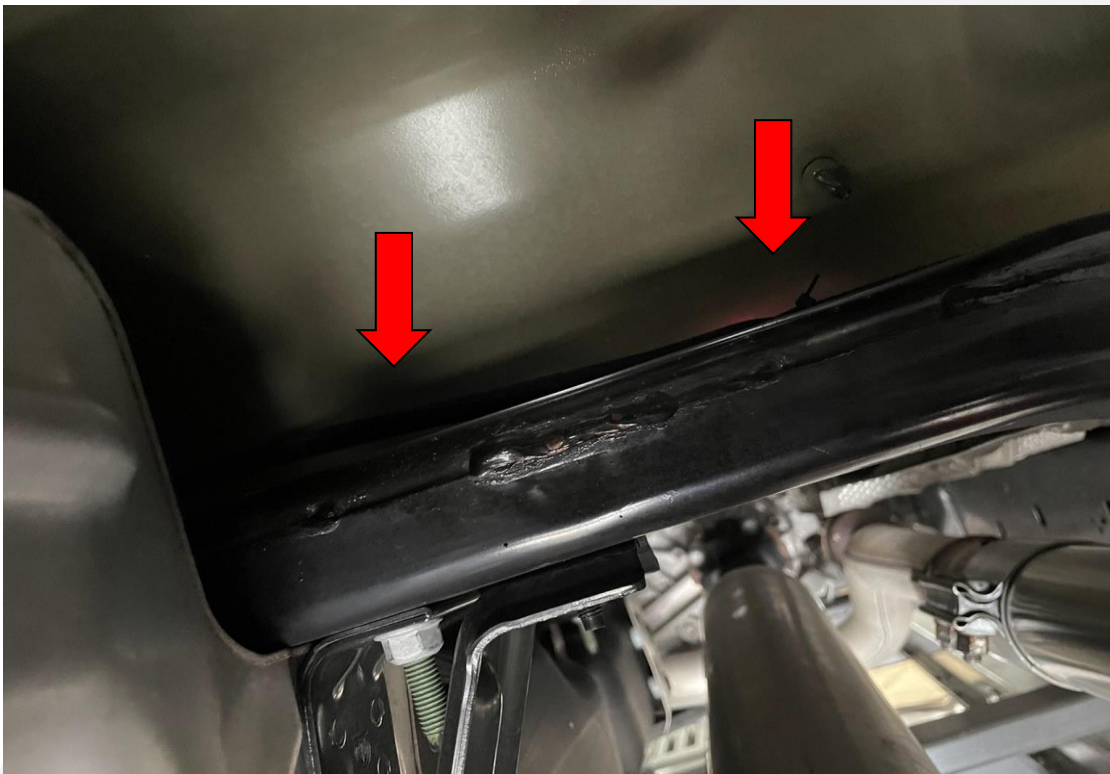
11. Route the wiring over to the outer side of the frame rail and follow the factory wiring towards the rear of the vehicle, securing with zip-ties as you go.



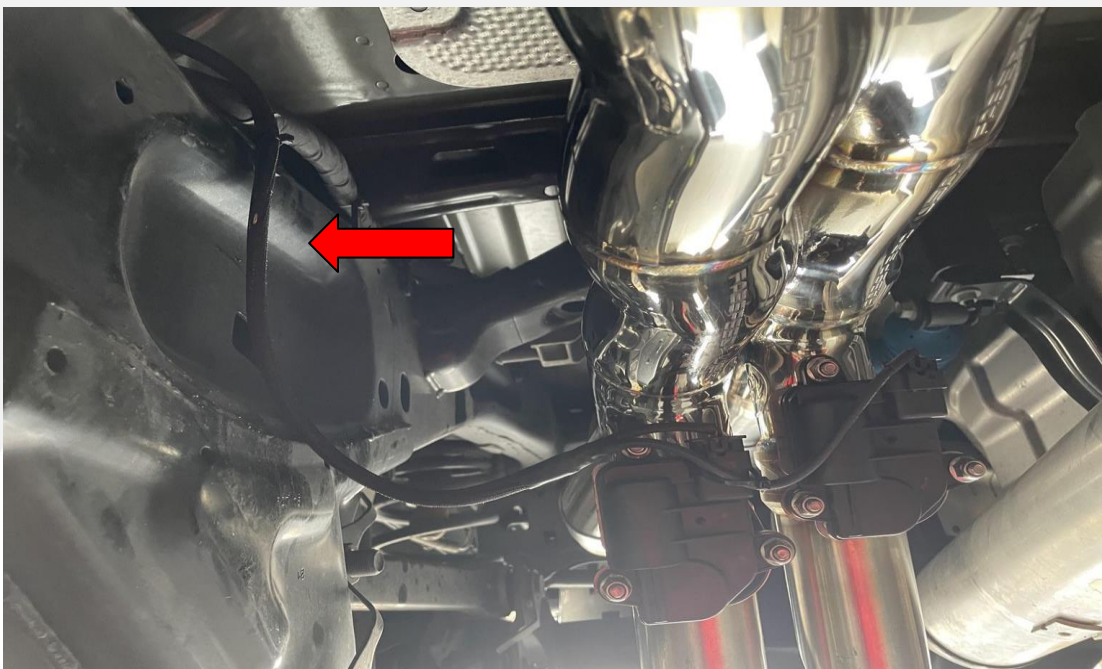


12. Continue over the center crossmember to the passenger's side frame rail.





13. Secure the controller harness to the passenger's side frame rail and then connect to the valvetronic servos on the X-pipe.



14. OEM exhaust can be reinstalled utilizing two of the Torca clamps at cut line.

If you have any questions, comments, or concerns related to your product, please contact us!