



DUAL EXHAUST SYSTEM

(2009-2018 1500)

INSTALLATION INSTRUCTIONS

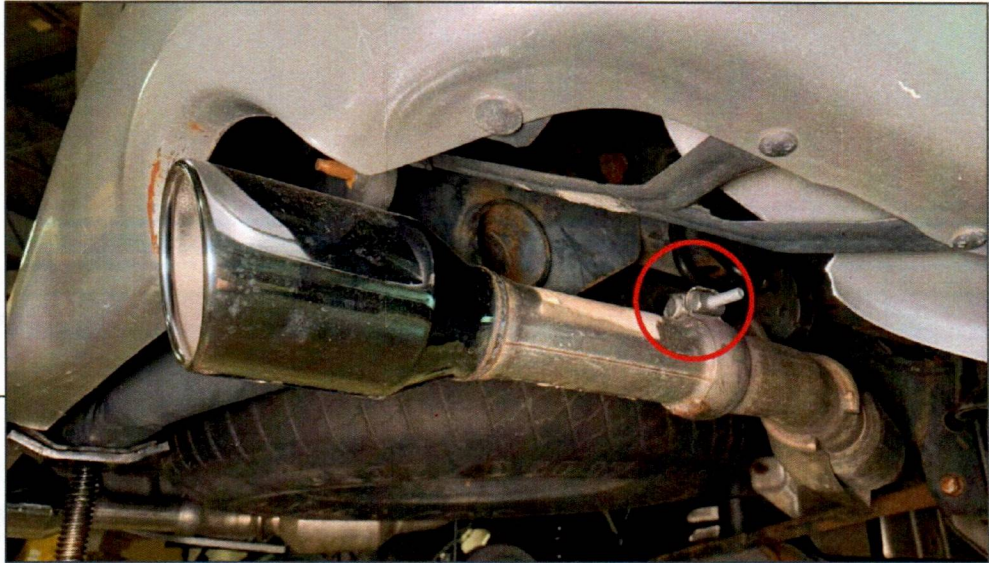
CONTENTS

- (1) Front Pipe
- (1) Muffler
- (1) RH Pipe
- (1) LH Front Pipe
- (1) LF Rear Pipe
- (2) Tail Pipes
- (2) Exhaust Tips
- (5) 2.5" Exhaust Clamps
- (2) 3" Exhaust Clamps

TOOLS REQUIRED

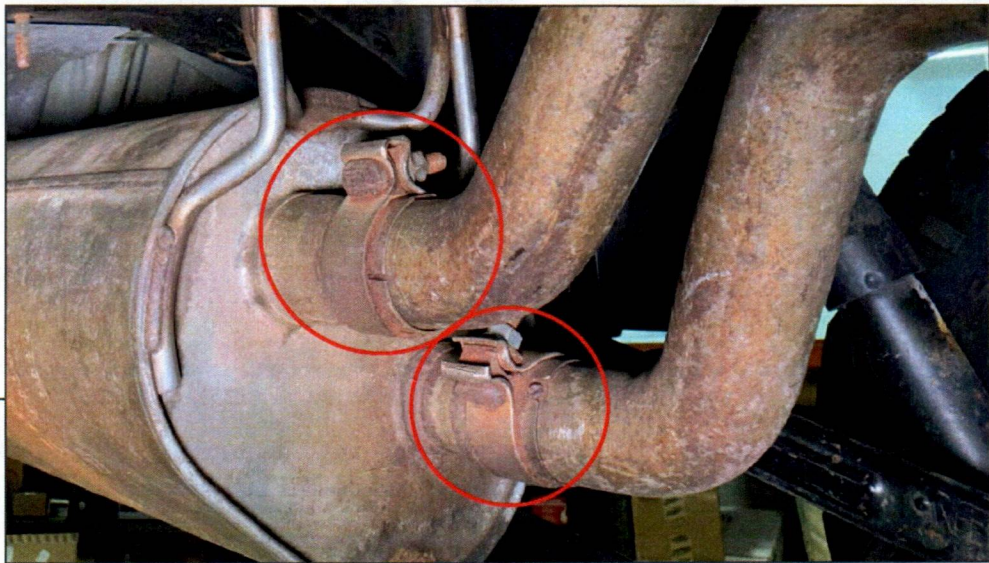
- 13mm, 15mm, 16mm Sockets
- Ratchet
- Spray Lubricant

SKU # R205192 / R205194



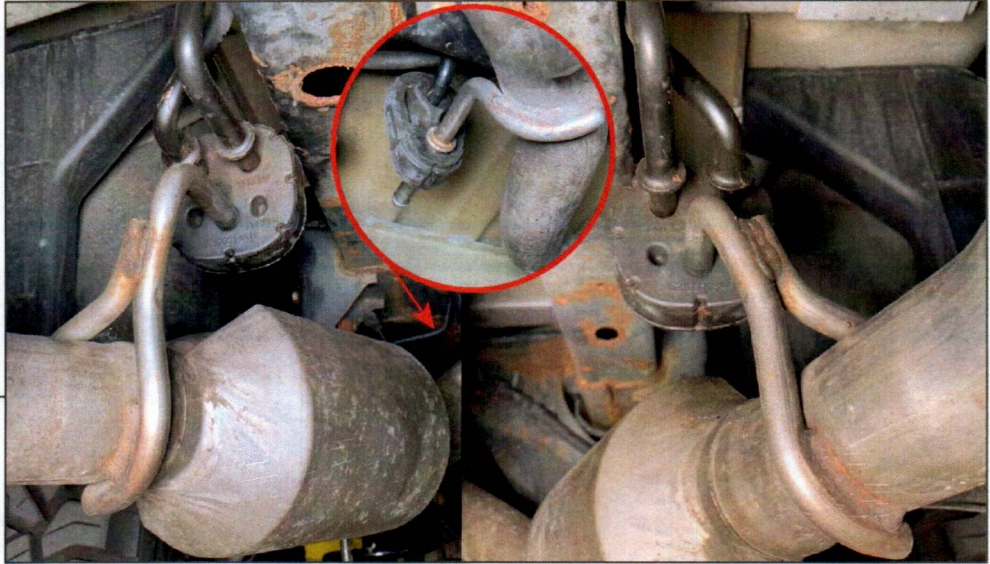
STEP 1

Loosen (1) exhaust clamp at each rear exhaust tip. Remove the exhaust tips from the vehicle.



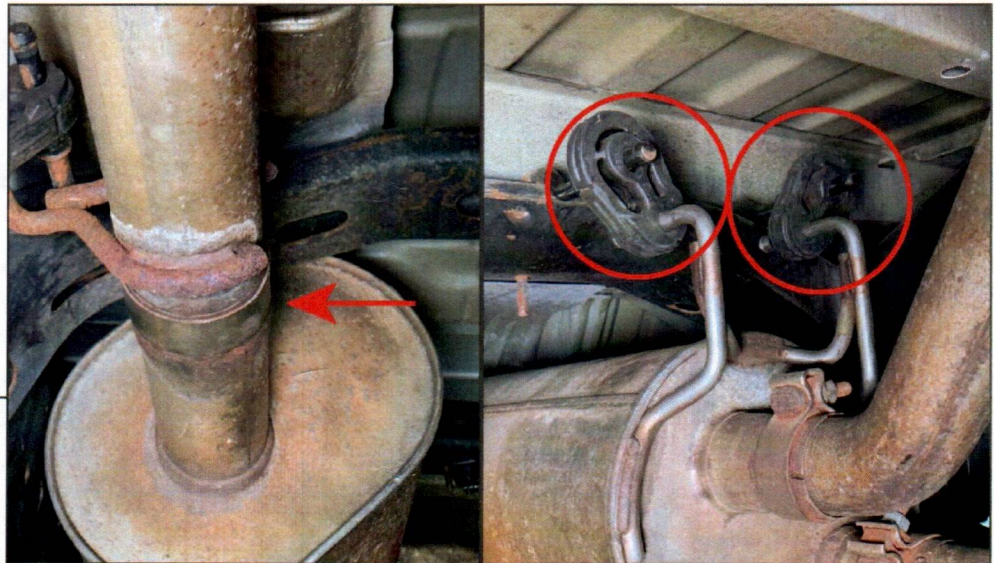
STEP 2

Loosen (2) exhaust clamps at the rear of the muffler.



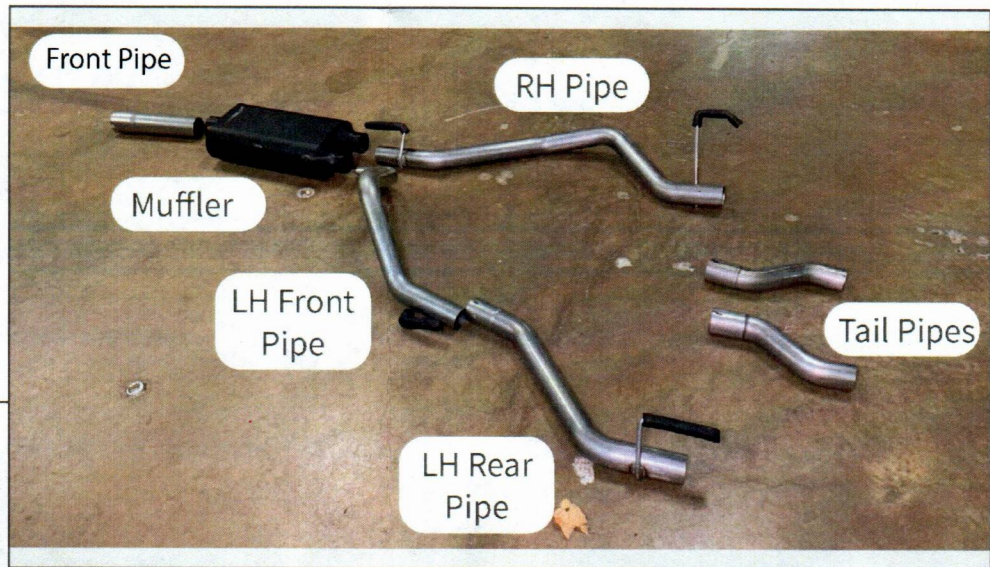
STEP 3

Remove the LH and RH exhaust tail pipes from the rubber exhaust hangers. Remove the tail pipes from the muffler and remove from the vehicle.



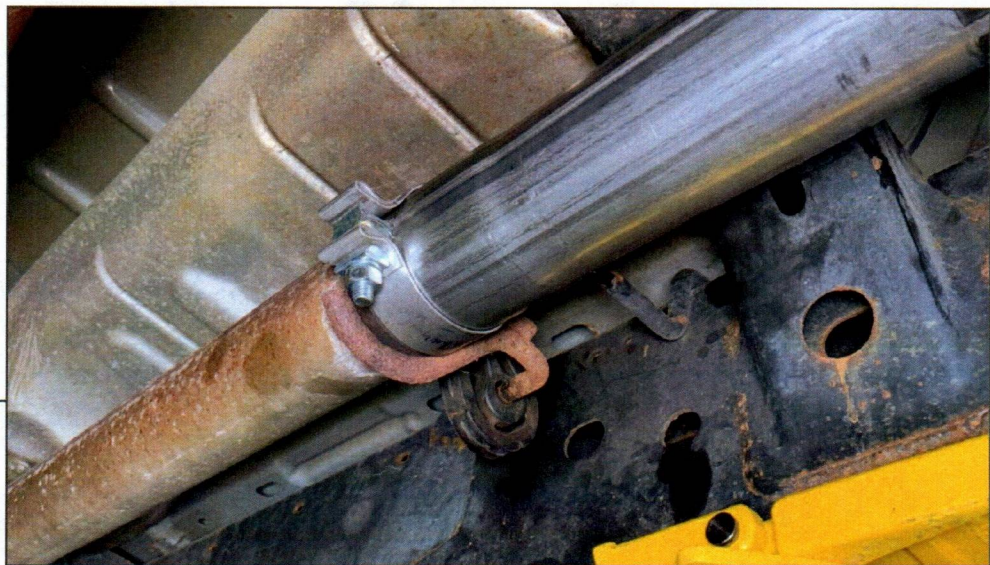
STEP 4

Loosen (1) exhaust clamp at the front of the muffler. Pull the muffler towards the rear of the vehicle to dislodge the (2) rubber exhaust hangers from the muffler. Remove the muffler from the vehicle.



STEP 5

Lay out and Identify the exhaust components.



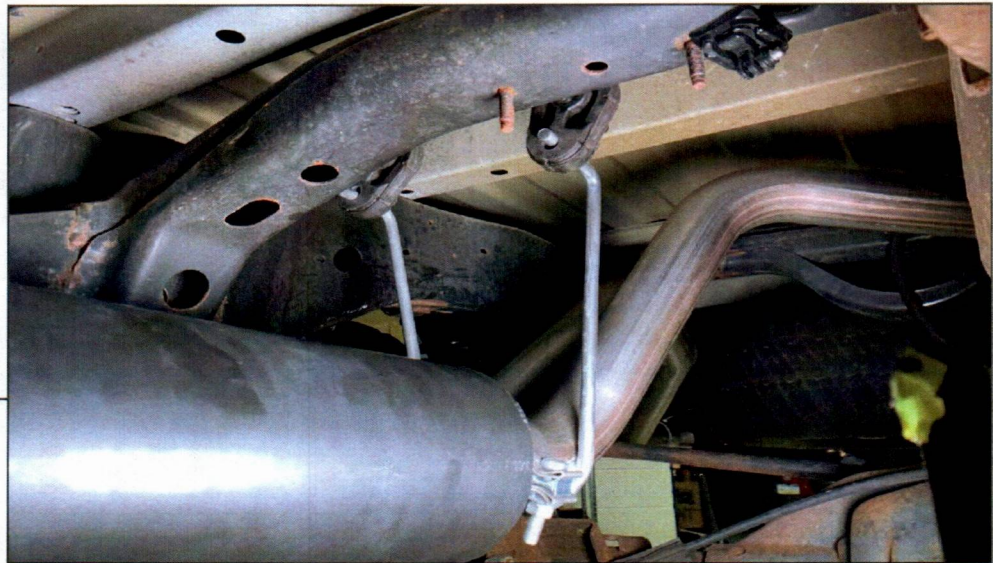
STEP 6

Install the front pipe to the original vehicle exhaust pipe. Loosely secure into place using (1) 3" exhaust clamp.



STEP 7

Install the muffler to the previously installed front pipe. Loosely secure into place using (1) 3" exhaust clamp.

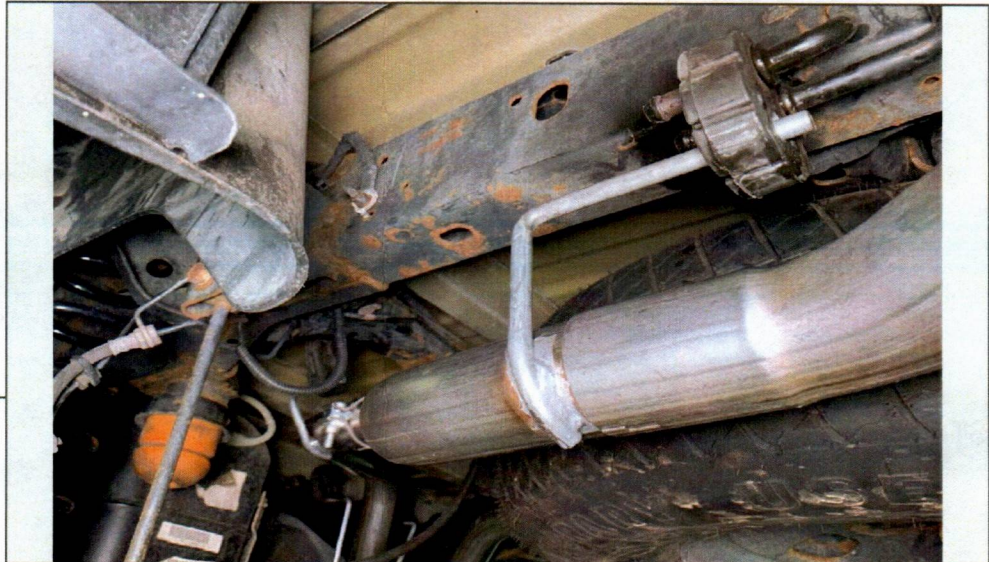


STEP 8

Loosely install the LH front pipe and the RH pipe into the muffler. Ensure the pipes are in the corresponding rubber exhaust hangers attached to the vehicle. Loosely secure the pipes to the muffler using (1) 2.5" exhaust clamp per muffler outlet.

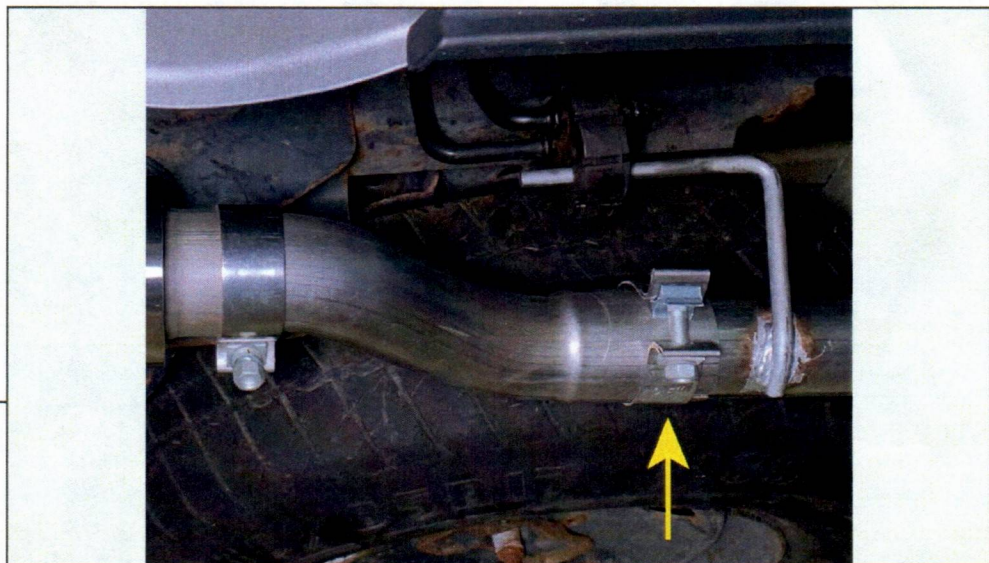


STEP 9

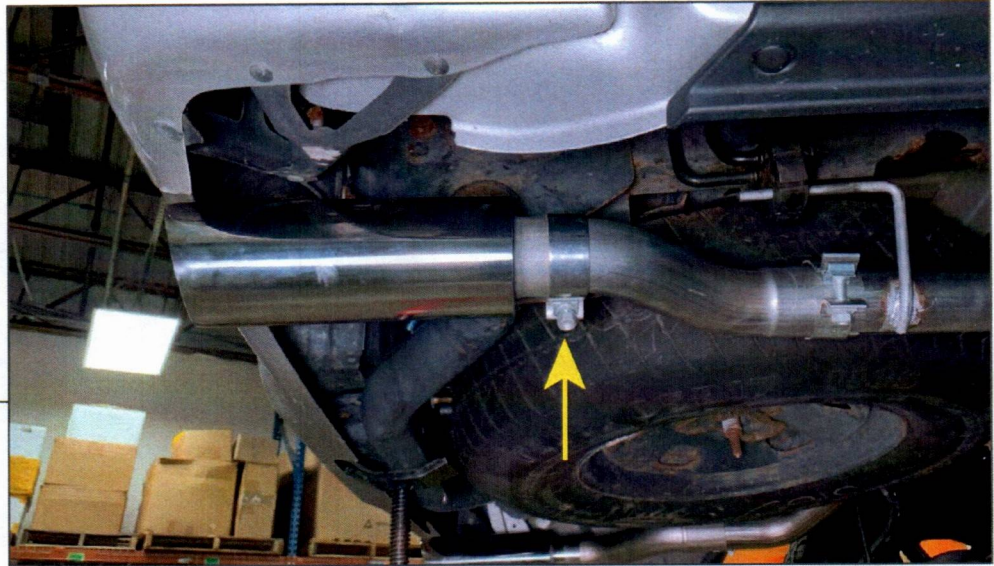


Install the LH rear pipe to the previously installed LH front pipe. Ensure the pipe is in the corresponding rubber exhaust hangers attached to the vehicle. Loosely secure into place using (1) 2.5" exhaust clamp.

STEP 10

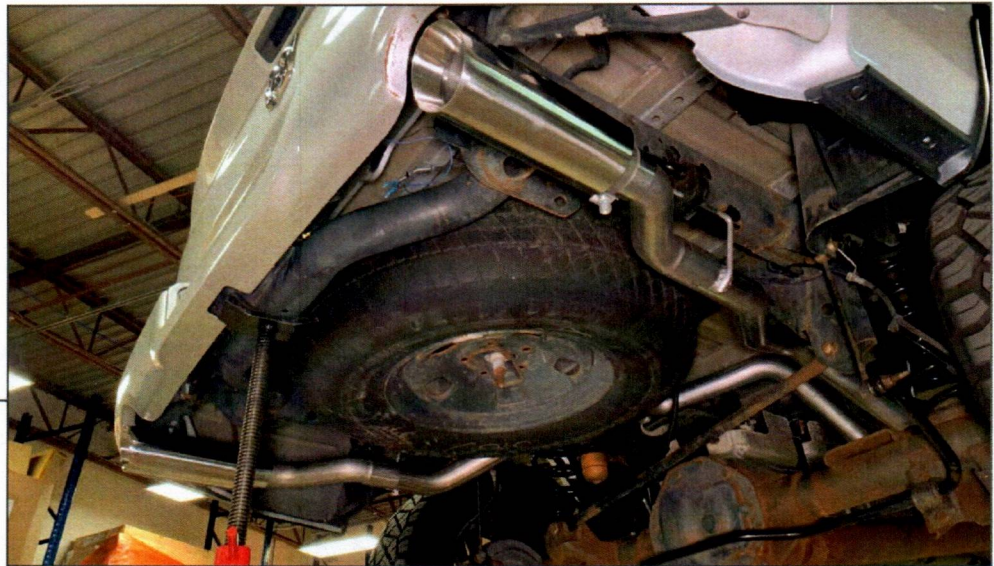


Install (1) tail pipe to each side of the vehicle exhaust. Loosely secure into place using (1) 2.5" exhaust clamp per tail pipe.



STEP 11

Install (1) exhaust tip to each side of the vehicle exhaust. Loosely secure into place using the welded on exhaust clamp.



STEP 12

Make necessary adjustments to the exhaust to provide best fit. Once fully adjusted, tighten all clamps to 45 ft. lbs.

Installation is now complete.