



FORMED RUNNING BOARDS WITH INTEGRAED LED LIGHTS

(2019-2025 1500 / 2500 / 3500 - QUAD CAB)

INSTALLATION INSTRUCTIONS

CONTENTS

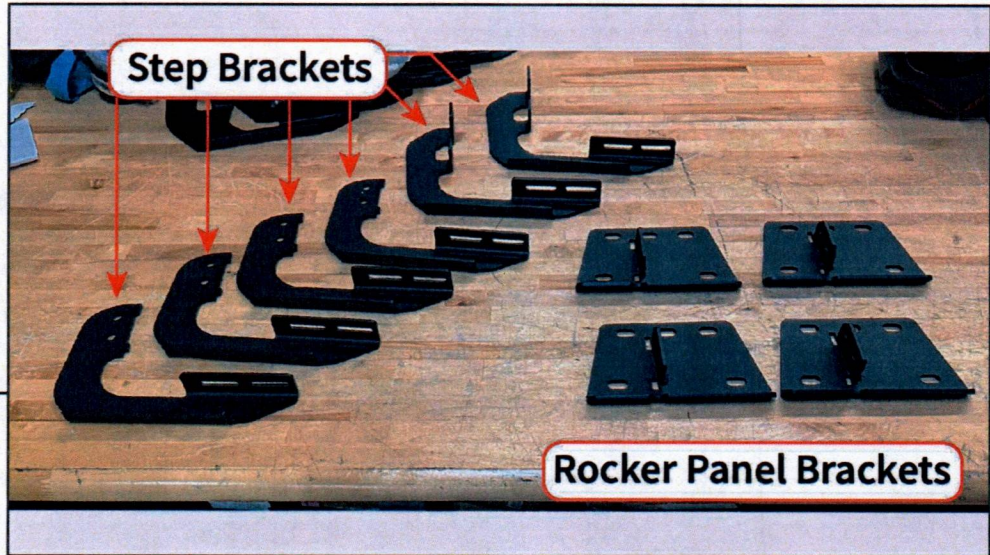
- (1) LH Running Board
- (1) RH Running Board
- (4) Front/Rear Step Brackets
- (2) Center Step Brackets
- (4) Rocker Panel Brackets
- (2) Center Mounting Brackets
- (2) Stud Brackets
- (8) M8x1.25 x 25mm Bolts
- (20) M8 Flat Washers [24mm OD]
- (15) M8 Flat Washers [16mm OD]
- (28) M8 Lock Nut
- (12) M6 Flat Washers
- (12) M6 Lock Washers
- (12) M6 Nuts
- (4) Puddle Lights
- (8) M4x0.7 x 10mm Allen Bolts
- (1) LED Wiring Harness
- (4) Door Magnet Switches
- (8) Door Magnets w/ Die Cut 3M Tape
- (8) Adhesion Promoter Prep Pads
- (30) Cable Ties

TOOLS REQUIRED

- 10mm, 13mm Socket/Wrench
- Ratchet
- Razor Knife
- Silicone Sealant
- Drill & Drill Bits

SKU # R212993
Edited: 09/09/2025

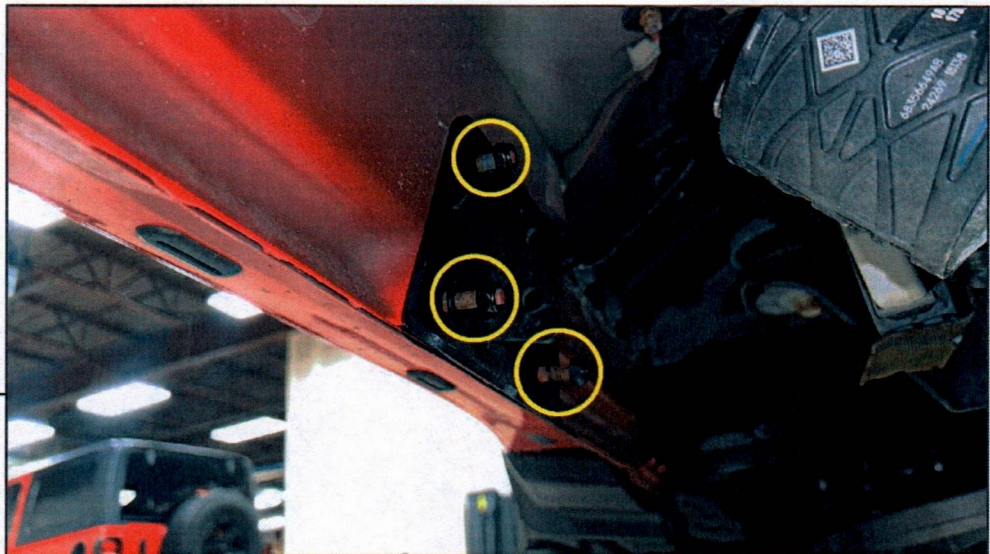
STEP 1



Lay out and identify the included rocker panel and step brackets and hardware.

The (2) center brackets mount to the rocker panel directly, the (4) remaining brackets secure to the rocker panel brackets.

**STEP 2
(Front & Rear)**



Locate the vehicle studs on the back-side of the rocker panel. On the front and rear studs, mount the rocker panel bracket using (3) M6 flat washers [16mm OD] and (3) M6 lock nuts. Do not fully tighten to allow for adjustments later.

BARRICADE

STEP 3 (Front & Rear)



Locate the (2) cutouts in the mounting bracket. The step mounting brackets will fit into these cutouts. Fit the front/rear mounting brackets to the previously mounted rocker panel brackets, and secure using (2) M8 x 25mm bolts, (4) M8 flat washers, and (2) M8 lock nuts per bracket.

STEP 4 (Center)



Mount the stud bracket to the lower rocker panel studs in the center of the vehicle using (2) M8 flat washers [24mm OD] and (2) M8 lock nuts.

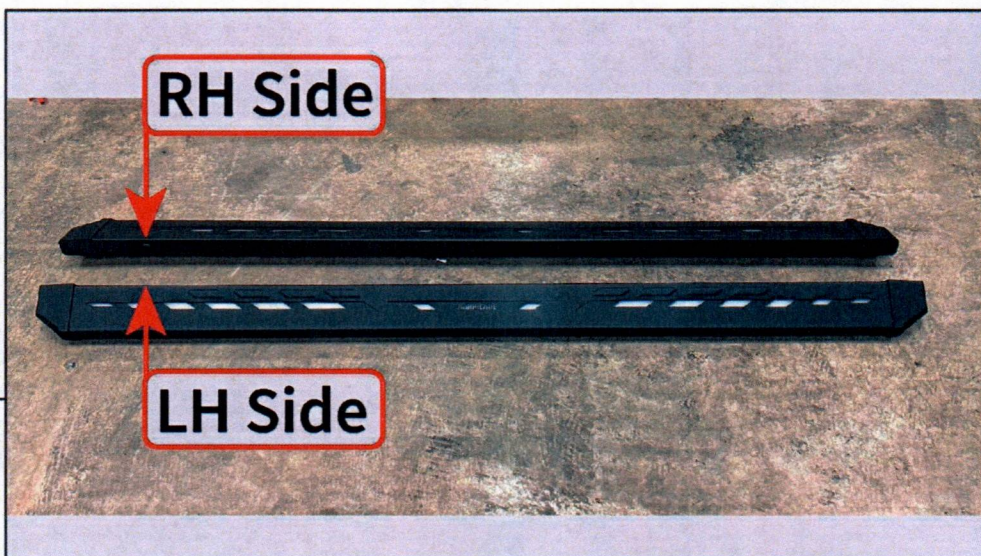
Mount the center mounting bracket to the M6 stud bracket and the vehicle upper stud using (2) M8 flat washers [24mm OD] and (2) M8 lock nuts.

BARRICADE



STEP 5

Mount the included (2) LED puddle lights to the mounting points on the bottom of the running board using (2) M4 x 10mm Allen bolts per LED light.

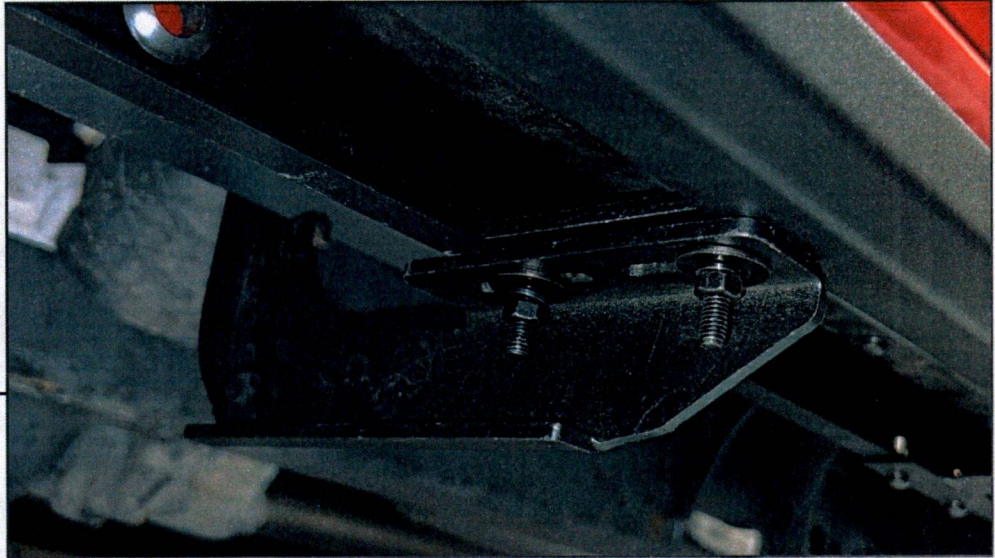


STEP 6

Determine the LH and RH running boards by locating the wiring grommet along the inside edge of the running board. The grommet side of the running board will fit to the front of the vehicle when the running board is mounted to the vehicle.

BARRICADE

STEP 7



Fit (3) M6 double stud plates into the running board. Then, fit the running board to the previously mounted brackets, ensuring the stud plates fit through the brackets.

Adjust the running board to best fit the vehicle, and secure into place using (6) M6 flat washers, (6) M6 lock washers, and (6) M6 nuts. Ensure all mounting brackets are fully tightened to the vehicle.

Repeat Steps 1-7 to install the remaining running board to the vehicle.

STEP 8

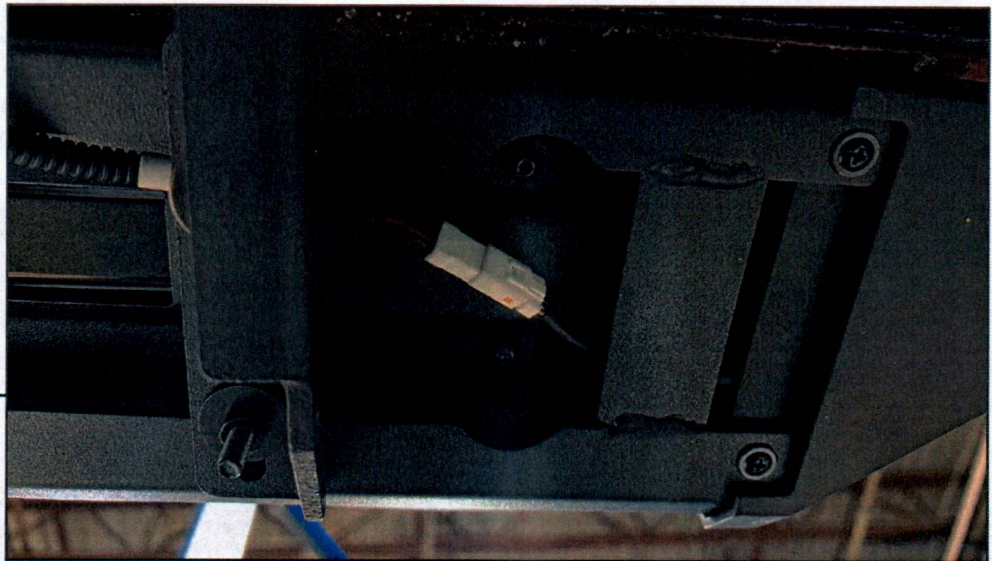


Lay out and identify each end of the wiring harness. Take note to the labels on each wire lead.

Beginning at the LH side of the vehicle, route the "Puddle Lamp" harness leads into the RH side running board through the grommet. Then, plug the harness leads into each puddle lamp.

BARRICADE

STEP 9



Route the wiring harness neatly under the vehicle (along frame crossmember) and repeat Step 8 for the RH side puddle lamps. Ensure the harness is away from hot/moving components.

Plug in the wire leads labeled "L-LED" and "R-LED" into the appropriate connector along the front of the running board.

STEP 10



Lift the bottom of the door sill panel upwards firmly to release the retaining clips. Then, pull the door sill panel away from the front of the vehicle to release the retaining clips. Set the panel aside.

Note: The trim panel is only secured using press-in metal clips. Moderate force will be required to dislodge the panel from the body.

Repeat this step to the opposite side of the vehicle.

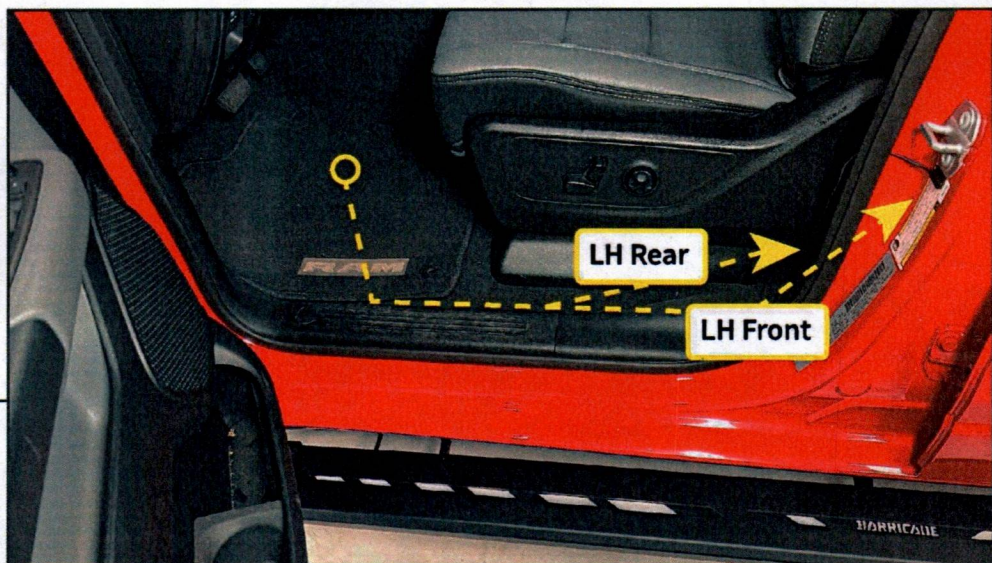


STEP 11

Locate the pre-installed floor grommets in the vehicle floor. Drill a hole in the grommet to allow the running board door switch harness to route to the vehicle doors.

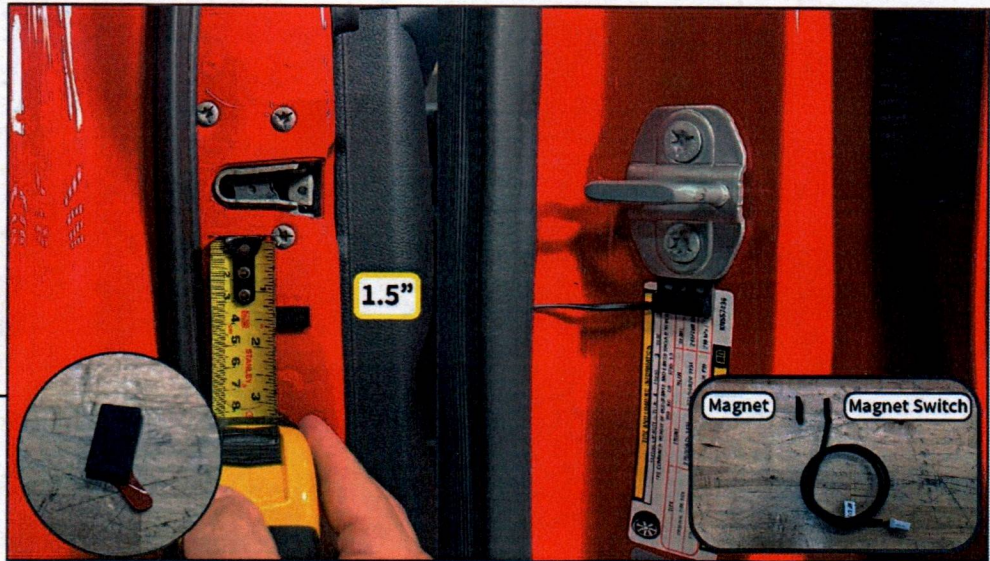
Note: At the end of the installation when all harnesses are neatly routed, silicone will be used to seal the floor grommet & harness.

Repeat this step to the opposite side of the vehicle.



STEP 12

Lift the weatherseal around the door opening. Route the shorter wire lead in the harness upwards on the door opening towards the door striker.

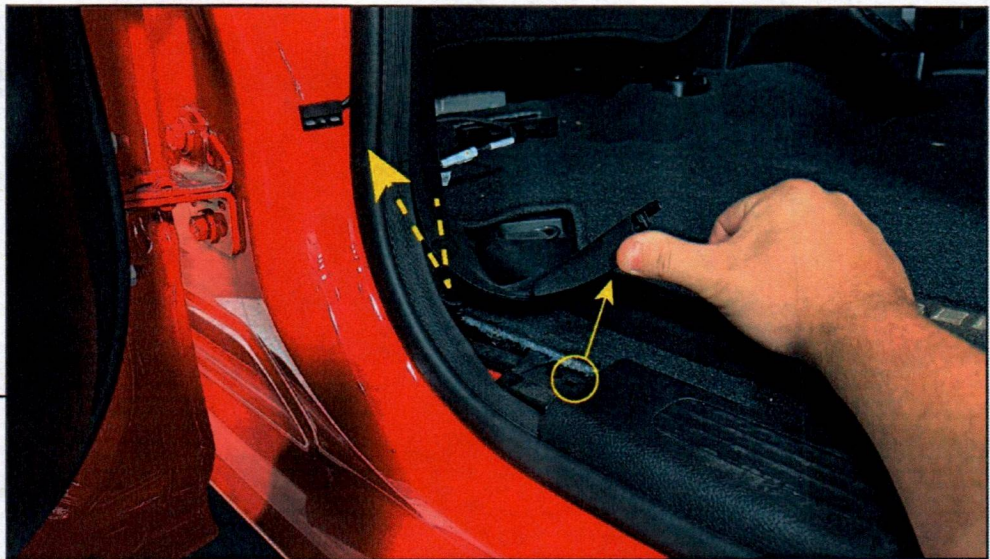
STEP 13
[Front Door]

Clean the vehicle door opening under the striker & the vehicle door under the latch assembly using (1) alcohol prep pad, and allow to fully dry.

Door Switch: Peel the tape backing, and adhere the switch to the door under the striker.

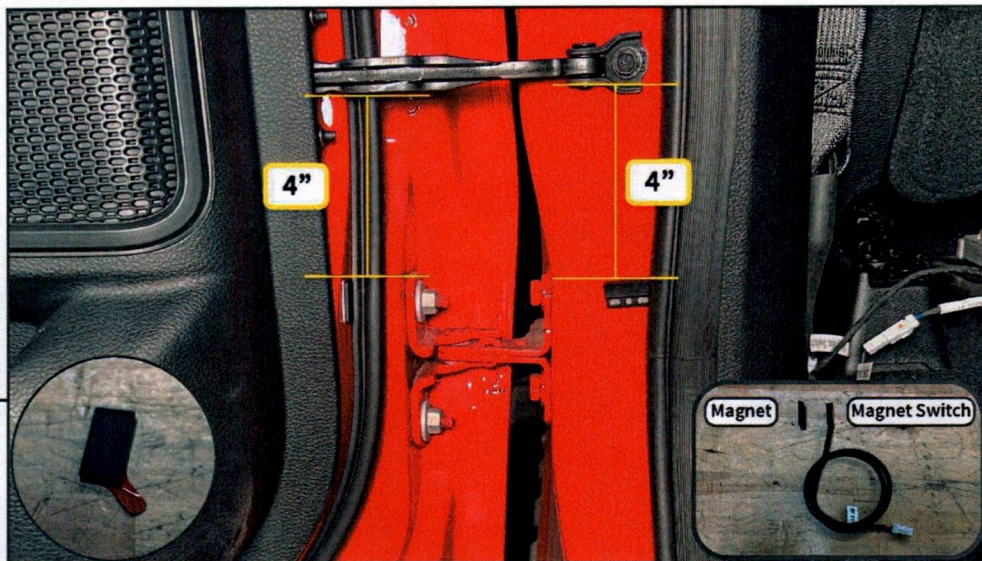
Magnet: Peel the tape backing, and adhere the magnet to the lower bolt on the door latch.

Plug in the door switch, and re-install the weatherseal and door sill trim to the door opening.

STEP 14
[Rear Door]

Route the remaining door switch lead under the vehicle B-Pillar trim towards the rear door. Then, lift the B-Pillar trim panel from the door sill panel route the switch harness.

BARRICADE



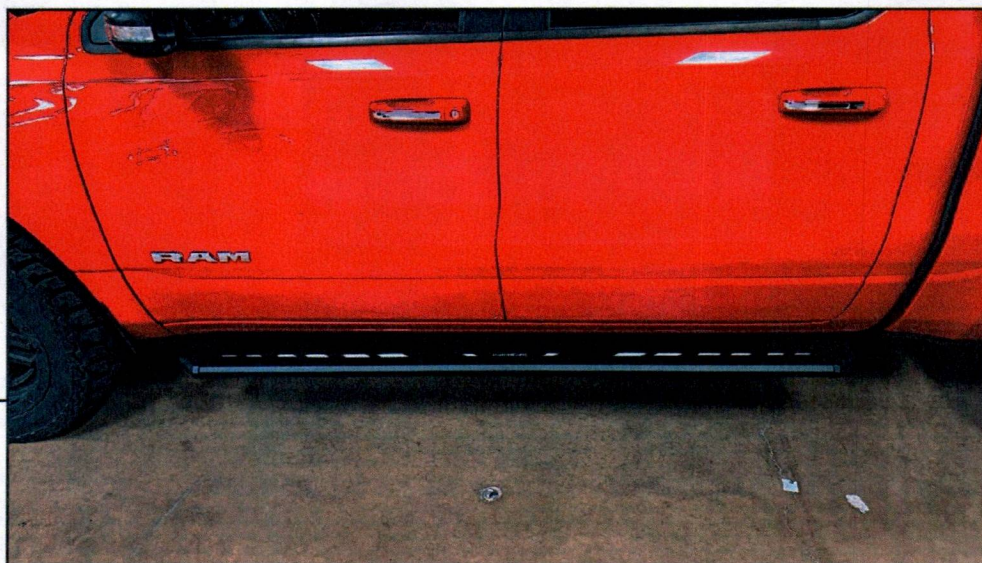
STEP 15 [Rear Door]

Clean the vehicle door opening & vehicle door under the door limiting bar using (1) alcohol prep pad, and allow to fully dry.

Door Switch: Peel the tape backing, and adhere the switch 4" under the door limiting bar.

Magnet: Peel the tape backing, and adhere the magnet 4" below the door limiting bar.

Plug in the door switch, and re-install the weatherseal and door sill trim to the door opening.



STEP 16

Complete door switch wiring/routing on the opposite side of the vehicle. Connect the wire harness to the battery using the diagram above. Secure the harnesses under the running boards using the included cable ties.

Close all doors, then open each door one at a time to verify functionality. The lighting will only power on when a door is open. If the lighting does not power off with the doors closed, verify magnet and switch locations. Installation is now complete.